

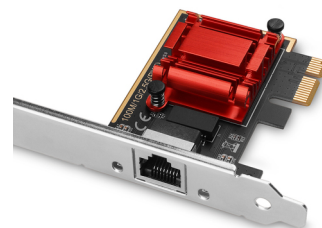
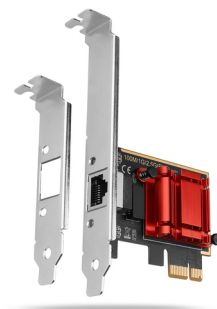
Axagon PCEE-G25 kartica za umrežavanje Interno Ethernet 2500 Mbit/s

Brend : Axagon

Kod proizvoda: PCEE-G25

Ime proizvoda : PCEE-G25

Axagon PCEE-G25. Interno. Tehnologija povezivanja: Žičano, Sučelje domaćina: PCI Express, Sučelje: Ethernet. Maksimalna brzina prijenosa podataka: 2500 Mbit/s. Boja proizvoda: Crveno, Srebro

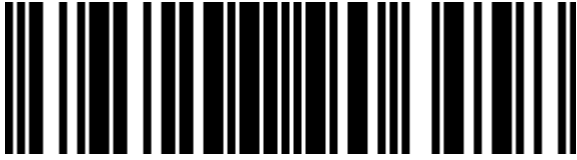


Priklučci i sučelja		Dizajn	
Tehnologija povezivanja *	Žičano	LED indikatori	✓
Sučelje domaćina *	PCI Express	Zemlja porijekla	Kina
Sučelje *	Ethernet	Certifikacija	CE, RoHS
Broj Ethernet LAN (RJ-45) priključaka	1	Sistemske zahtjevi	
PCI version	2.1	Podržani Windows operativni sustavi	✓
Faktor oblika PCI kartice	Pune visine (niski profil)	Podržani Mac operativni sustavi	✓
Mreža		Podržani Linux operativni sustavi	✓
Maksimalna brzina prijenosa podataka *	2500 Mbit/s	Other operating systems supported	✓
Mrežni standard *	IEEE 1588v2, IEEE 802.1Q, IEEE 802.1Qav, IEEE 802.1ad, IEEE 802.1as, IEEE 802.1p, IEEE 802.3, IEEE 802.3ab, IEEE 802.3az, IEEE 802.3bz, IEEE 802.3u	Podržani Server operativni sustavi	✓
Ethernet LAN veza	✓	Podaci o ambalaži	
Vrsta Ethernet sučelja	2.5 Gigabit Ethernet	Širina ambalaže	145 mm
brzine prijenosa podataka putem Ethernet LANa	10,100,1000,2500 Mbit/s	Dubina ambalaže	25 mm
Tehnologija kabliranja	10/100/1000BaseT(X)	Visina ambalaže	112 mm
Wake-on-LAN spreman	✓	Težina paketa	84 g
Puni dostrani ispis	✓	Sadržaj ambalaže	
VLAN podrška	✓	Uključeni nosači za ugradnju	✓
LAN kontroler	Realtek RTL8125B	Priručnik	✓
Dizajn		Tehničke pojedinosti	
Komponenta za *	PC/osobno računalo	Jamstveni rok	2 godin(a)
Boja proizvoda	Crveno, Srebro	Potvrde o usklađenosti	RoHS, CE
Interno *	✓	Ostale značajke	
Čipset	Realtek RTL8125B	Visina nosača	Low-Profile (LP) / Full-Height (FH)

Dizajn

Plug and Play





8595247906458

Catalog Object Cloud



Disclaimer. The information published here (the "Information") is based on sources that can be considered reliable, typically the manufacturer, but this Information is provided "AS IS" and without guarantee of correctness or completeness. The Information is only indicative and can be changed at any time without notification. No rights can be based on the Information. Suppliers or aggregators of this Information do not accept any liability with regard to the content of (web)pages and other documents, including its Information. The publisher of the Information can not be held liable for the content of 3rd party websites that are linking this Information or are linked to from this Information. You as the User of the Information are solely responsible for the choice and usage of this Information. You are not entitled to transfer, copy or otherwise multiply or distribute the Information. You are obliged to follow the directions of the copyright owner(s) with regard to the use of the Information. Exclusively Dutch law is applicable. With regard to price and stock data on the site, the publisher followed a number of starting points, which are not necessarily relevant for your private or business circumstances. Therefore, the price and stock data are only indicative and are subject to changes. You are personally responsible for the way you use and apply this information. As a user of the Information or sites or documents in which this Information is included, you will adhere to standard fair use including avoidance of spamming, ripping, intellectual-property violations, privacy violations, and any other illegal activity.