



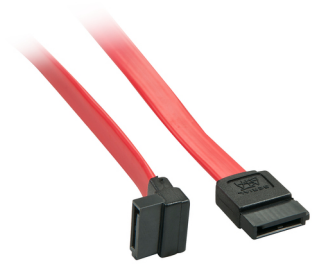
Lindy 0.5m Internal SATA III cable, 90°

Brand : Lindy

Product code: 33351

Product name : 0.5m Internal SATA III cable, 90°

- Serial ATA (SATA) 7 Pin to Right-angled (90°) (SATA) 7 Pin
 - Connects your motherboard to a HDD, SSD or Optical Drive
 - Compatible with SATA III and backwards compatible with SATA I and II
 - Operating Temperature: approx. -20 to 65°C
 - Storage Temperature: approx. -20 to 65°C
 - Colour: Red
- Int.SATA III Cable with 90° Plug, 0.5m



Lindy 0.5m Internal SATA III cable, 90°:

Serial ATA (SATA) 7 Pin to Right-angled (90°) (SATA) 7 Pin
Connects your motherboard to a HDD, SSD or Optical Drive
Compatible with SATA III and backwards compatible with SATA I and II
Operating Temperature: approx. -20 to 65°C
Storage Temperature: approx. -20 to 65°C
Colour: Red
10 Year Warranty

The LINDY SATA Cable is a high quality item which features two 7 Pin Data connectors that provide a durable connection to SATA equipment. The cable is constructed using shielded twin-ax conductors with multiple ground connections and made with high quality materials for maximum performance

Features		Features	
Cable length *	0.5 m	Connector 1 form factor	Straight
Cable type *	SATA III	Connector gender *	Male/Male
Connector 1 *	SATA 7-pin	Product colour *	Black, Red
Connector 2 *	SATA 7-pin		
Logistics data			
		Harmonized System (HS) code	84733080



4002888333511

Catalog Object Cloud



Disclaimer. The information published here (the "Information") is based on sources that can be considered reliable, typically the manufacturer, but this Information is provided "AS IS" and without guarantee of correctness or completeness. The Information is only indicative and can be changed at any time without notification. No rights can be based on the Information. Suppliers or aggregators of this Information do not accept any liability with regard to the content of (web)pages and other documents, including its Information. The publisher of the Information can not be held liable for the content of 3rd party websites that are linking this Information or are linked to from this Information. You as the User of the Information are solely responsible for the choice and usage of this Information. You are not entitled to transfer, copy or otherwise multiply or distribute the Information. You are obliged to follow the directions of the copyright owner(s) with regard to the use of the Information. Exclusively Dutch law is applicable. With regard to price and stock data on the site, the publisher followed a number of starting points, which are not necessarily relevant for your private or business circumstances. Therefore, the price and stock data are only indicative and are subject to changes. You are personally responsible for the way you use and apply this information. As a user of the Information or sites or documents in which this Information is included, you will adhere to standard fair use including avoidance of spamming, ripping, intellectual-property violations, privacy violations, and any other illegal activity. Automated scraping, data mining, or harvesting for the purpose of training machine learning models, neural networks, or artificial intelligence systems is strictly prohibited without a commercial license.