



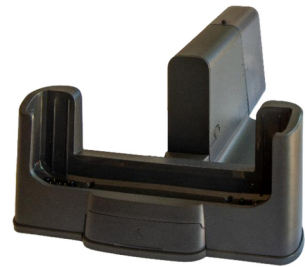
Zebra CRD-ET6X-1SNWS-01 handheld mobile computer accessory Mount

Brand : Zebra

Product code: CRD-ET6X-1SNWS-01

Product name : CRD-ET6X-1SNWS-01

- Allows to connect an ET6x Android tablet to an external monitor and multiple peripherals
 - Includes HDMI, Ethernet, 3.5mm Headset Jack and USB-A (x4) ports
 - Requires power supply PWR-BGA12V50W0WW, DC Line Cord CBL-DC-388A2- 01 and country specific grounded AC Line Cord sold separately
 - Requires Workstation Connect software version 4.1 or newer
 - Compatible with accessories that attach to the back of the ET6x (Smart Card Reader, RFID Reader, Kickstand with Hand Strap)
- Connect Cradle (Workstation) (Android only)
Zebra CRD-ET6X-1SNWS-01. Product type: Mount, Brand compatibility: Zebra, Compatibility: ET6x.
Quantity per pack: 1 pc(s)



Features		Features	
Product type *	Mount	Product colour	Black
Brand compatibility *	Zebra	Packaging data	
Compatibility *	ET6x	Quantity per pack *	1 pc(s)

Catalog Object Cloud



Disclaimer. The information published here (the "Information") is based on sources that can be considered reliable, typically the manufacturer, but this Information is provided "AS IS" and without guarantee of correctness or completeness. The Information is only indicative and can be changed at any time without notification. No rights can be based on the Information. Suppliers or aggregators of this Information do not accept any liability with regard to the content of (web)pages and other documents, including its Information. The publisher of the Information can not be held liable for the content of 3rd party websites that are linking this Information or are linked to from this Information. You as the User of the Information are solely responsible for the choice and usage of this Information. You are not entitled to transfer, copy or otherwise multiply or distribute the Information. You are obliged to follow the directions of the copyright owner(s) with regard to the use of the Information. Exclusively Dutch law is applicable. With regard to price and stock data on the site, the publisher followed a number of starting points, which are not necessarily relevant for your private or business circumstances. Therefore, the price and stock data are only indicative and are subject to changes. You are personally responsible for the way you use and apply this information. As a user of the Information or sites or documents in which this Information is included, you will adhere to standard fair use including avoidance of spamming, ripping, intellectual-property violations, privacy violations, and any other illegal activity. Automated scraping, data mining, or harvesting for the purpose of training machine learning models, neural networks, or artificial intelligence systems is strictly prohibited without a commercial license.