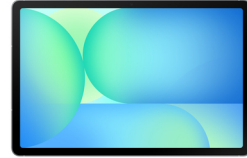


## Samsung Galaxy Tab S10 FE 5G (10.9")



**Brand :** Samsung

**Product family:** Galaxy Tab

**Product code:** SM-X526BZAPEUB

**Product name :** Galaxy Tab S10 FE 5G (10.9")

- Circle to Search

- Large Display

- Intelligent Notes with S Pen

10.9", 2304 x 1440, 12GB RAM, 256GB ROM, 13MP/12MP, 5G, Wi-Fi, Bluetooth 5.3, 8000 mAh

Samsung Galaxy Tab S10 FE 5G (10.9"). Display diagonal: 27.7 cm (10.9"), Display resolution: 2304 x

1440 pixels. Internal storage capacity: 256 GB. Processor frequency: 2.6 GHz, Processor family:

Samsung Exynos, Processor model: 1580. Internal memory: 12 GB. Rear camera resolution (numeric): 13

MP, Rear camera type: Single camera, Front camera resolution (numeric): 12 MP. Top Wi-Fi standard: Wi-

Fi 6 (802.11ax). Assisted GPS (A-GPS). Card reader integrated. Weight: 500 g. Product colour: Grey

Display		Performance	
Display diagonal *	27.7 cm (10.9")	Assisted GPS (A-GPS) *	✓
Display resolution *	2304 x 1440 pixels	GLONASS	✓
Panel type *	TFT	BeiDou	✓
HD type	WUXGA+	GPS (satellite)	✓
Display number of colours	16 million colours	Galileo	✓
Processor		Quasi-Zenith Satellite System (QZSS)	✓
Processor manufacturer *	Samsung	Accelerometer	✓
Processor family *	Samsung Exynos	Ambient light sensor	✓
Processor model *	1580	Gyroscope	✓
Processor cores	8	Hall sensor	✓
Processor boost frequency	2.9 GHz	Electronic compass	✓
Processor frequency *	2.6 GHz	Position location *	✓
Memory		Security	
Internal memory *	12 GB	Fingerprint reader	✓
Storage		Software	
Internal storage capacity *	256 GB	Platform *	Android
Card reader integrated *	✓	Battery	
Compatible memory cards	MicroSD (TransFlash)	Battery capacity *	8000 mAh
Maximum memory card size	2 TB	Removable battery	✗
User memory	233.2 GB	Continuous video playback time	20 h
Camera		Power	
Rear camera type *	Single camera	USB Type-C charging port *	✓
Rear camera resolution (numeric) *	13 MP	USB Power Delivery (USB PD)	✓
Auto focus	✓	USB Type-C required charging power (min) *	15 W
Rear camera flash	✗	USB Type-C required charging power (max) *	45 W
Video recording	✓	Endurance	
Maximum video resolution	3840 x 2160 pixels	Energy efficiency class *	F
Resolution at capture speed	3840x2160@30fps	Energy efficiency scale	A to G
Video capturing speed	30 fps	Battery endurance per cycle *	5792 min
Front camera *	✓	Battery endurance in cycles *	2000
Front camera resolution (numeric)	12 MP	Repeated free fall reliability class *	E
Network		Repairability class *	C
Mobile network generation	5G	International Protection (IP) code *	IP68
Mobile network connection *	✓		
3G standards	UMTS		
4G standard	LTE-TDD & LTE-FDD		
5G standard	Sub6 FDD, Sub6 TDD		
Bluetooth	✓		
Bluetooth version	5.3		

Network		Media formats	
Top Wi-Fi standard *	Wi-Fi 6 (802.11ax)	Audio formats supported	3GA, AAC, AMR, AWB, FLAC, IMY, M4A, Mid, MIDI, MP3, MXMF, OGA, OGG, OTA, RTTTL, RTX, WAV, XMF
Wi-Fi standards	802.11a, 802.11b, 802.11g, Wi-Fi 4 (802.11n), Wi-Fi 5 (802.11ac), Wi-Fi 6 (802.11ax)		
Wi-Fi Direct	✓	Video formats supported	3G2, 3GP, AVI, FLV, M4V, MKV, MP4, WEBM
Near Field Communication (NFC)	✗		
3G bands supported	2100,900,1900,850,1700 MHz	<b>Weight &amp; dimensions</b>	
4G bands supported	2100,700,800,1900,850,1800,1500,2300,2600,900,1700,2500 MHz	Width	254.3 mm
MIMO	✓	Depth	6 mm
5G bands supported	2100,700,800,850,1800,2600,600,900,1700,2300,2500,3700,3500 MHz	Height	165.8 mm
Dual SIM support	✓	Weight	500 g
SIM card type	NanoSIM	<b>Packaging content</b>	
<b>Ports &amp; interfaces</b>		Stylus pen	✓
USB 2.0 Type-C ports quantity	1	AC adapter included *	✗
Mobile High-Definition Link (MHL)	✗	<b>Other features</b>	
Headphone connectivity	USB	Video capture resolution (max)	3840 x 2160 pixels
<b>Design</b>		Bluetooth profiles	A2DP, AVRCP, DI, HFP, HID, HOGP, HSP, MAP, OPP, PAN, PBAP, PBP, TMAP
Device type *	Mobile tablet	Compatibility	Galaxy Buds3 Pro, Galaxy Buds2 Pro, Galaxy Buds Pro, Galaxy Buds Live, Galaxy Buds+, Galaxy Buds3, Galaxy Buds2, Galaxy Buds, Galaxy Buds FE
Form factor *	Slate	2G bands (primary SIM)	850,1900,1800,900 MHz
Product colour *	Grey	Repairability index	2.8
		Security update term	30 April 2032

Disclaimer. The information published here (the "Information") is based on sources that can be considered reliable, typically the manufacturer, but this Information is provided "AS IS" and without guarantee of correctness or completeness. The Information is only indicative and can be changed at any time without notification. No rights can be based on the Information. Suppliers or aggregators of this Information do not accept any liability with regard to the content of (web)pages and other documents, including its Information. The publisher of the Information can not be held liable for the content of 3rd party websites that are linking this Information or are linked to from this Information. You as the User of the Information are solely responsible for the choice and usage of this Information. You are not entitled to transfer, copy or otherwise multiply or distribute the Information. You are obliged to follow the directions of the copyright owner(s) with regard to the use of the Information. Exclusively Dutch law is applicable. With regard to price and stock data on the site, the publisher followed a number of starting points, which are not necessarily relevant for your private or business circumstances. Therefore, the price and stock data are only indicative and are subject to changes. You are personally responsible for the way you use and apply this information. As a user of the Information or sites or documents in which this Information is included, you will adhere to standard fair use including avoidance of spamming, ripping, intellectual-property violations, privacy violations, and any other illegal activity.

Publication date: 27-APR-2026. Prints or copies of Information are only valid on the printed Publication date