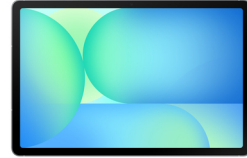


Samsung Galaxy Tab S10 FE (10.9", Wi-Fi)



Brand : Samsung

Product family: Galaxy Tab

Product code: SM-X520NZAPEUB

Product name : Galaxy Tab S10 FE (10.9", Wi-Fi)

- Circle to Search

- Large Display

- Intelligent Notes with S Pen

10.9", 2304 x 1440, 12GB RAM, 256GB ROM, 13MP/12MP, Wi-Fi, Bluetooth 5.3, 8000 mAh

Samsung Galaxy Tab S10 FE (10.9", Wi-Fi). Display diagonal: 27.7 cm (10.9"), Display resolution: 2304 x 1440 pixels. Internal storage capacity: 256 GB. Processor frequency: 2.6 GHz, Processor family:

Samsung Exynos, Processor model: 1580. Internal memory: 12 GB. Rear camera resolution (numeric): 13 MP, Rear camera type: Single camera, Front camera resolution (numeric): 12 MP. Top Wi-Fi standard: Wi-Fi 6 (802.11ax). Assisted GPS (A-GPS). Card reader integrated. Weight: 497 g. Product colour: Grey

Display		Performance	
Display diagonal *	27.7 cm (10.9")	Galileo	✓
Display resolution *	2304 x 1440 pixels	Quasi-Zenith Satellite System (QZSS)	✓
Panel type *	TFT	Position location *	✓
HD type	WUXGA+	Sensors	
Display number of colours	16 million colours	Accelerometer	✓
Processor		Ambient light sensor	✓
Processor manufacturer *	Samsung	Gyroscope	✓
Processor family *	Samsung Exynos	Hall sensor	✓
Processor model *	1580	Geomagnetic sensor	✓
Processor cores	8	Electronic compass	✓
Processor boost frequency	2.9 GHz	Security	
Processor frequency *	2.6 GHz	Fingerprint reader	✓
Memory		Software	
Internal memory *	12 GB	Platform *	Android
Storage		Battery	
Internal storage capacity *	256 GB	Battery capacity *	8000 mAh
Card reader integrated *	✓	Battery endurance in cycles *	2000
Compatible memory cards	MicroSD (TransFlash)	Removable battery	✗
Maximum memory card size	2 TB	Continuous video playback time	20 h
User memory	233.7 GB	Power	
Camera		USB Type-C charging port *	✓
Rear camera type *	Single camera	USB Power Delivery (USB PD)	✓
Rear camera resolution (numeric) *	13 MP	USB Type-C required charging power (min) *	15 W
Auto focus	✓	USB Type-C required charging power (max) *	45 W
Rear camera flash	✗	Endurance	
Video recording	✓	Energy efficiency class *	F
Maximum video resolution	3840 x 2160 pixels	Energy efficiency scale	A to G
Resolution at capture speed	3840x2160@30fps	Battery endurance per cycle *	5792 min
Video capturing speed	30 fps	Repeated free fall reliability class *	E
Front camera *	✓	Repairability class *	C
Front camera resolution (numeric)	12 MP	Repairability index	2.8
Network		International Protection (IP) code *	IP68
Mobile network connection *	✗		
Bluetooth	✓		
Bluetooth version	5.3		
Top Wi-Fi standard *	Wi-Fi 6 (802.11ax)		

Network		Media formats	
Wi-Fi standards	802.11a, 802.11b, 802.11g, Wi-Fi 4 (802.11n), Wi-Fi 5 (802.11ac), Wi-Fi 6 (802.11ax)	Audio formats supported	3GA, AAC, AMR, AWB, FLAC, IMY, M4A, Mid, MIDI, MP3, MXMF, OGA, OGG, OTA, RTTTL, RTX, WAV, XMF
Wi-Fi Direct	✓	Video formats supported	3G2, 3GP, AVI, FLV, M4V, MKV, MP4, WEBM
Near Field Communication (NFC)	✗	Weight & dimensions	
MIMO	✓	Width	254.3 mm
Ports & interfaces		Depth	6 mm
USB 2.0 Type-C ports quantity	1	Height	165.8 mm
Mobile High-Definition Link (MHL)	✗	Weight	497 g
Headphone connectivity	USB	Packaging content	
Design		AC adapter included *	✗
Device type *	Mobile tablet	Stylus pen	✓
Form factor *	Slate	Other features	
Product colour *	Grey	Video capture resolution (max)	3840 x 2160 pixels
Performance		Bluetooth profiles	A2DP, AVRCP, DI, HFP, HID, HOGP, HSP, OPP, PAN, PBAP, PBP, TMAP
Assisted GPS (A-GPS) *	✓	Compatibility	Galaxy Buds3 Pro, Galaxy Buds2 Pro, Galaxy Buds Pro, Galaxy Buds Live, Galaxy Buds+, Galaxy Buds3, Galaxy Buds2, Galaxy Buds, Galaxy Buds FE
GLONASS	✓	Security update term	30 April 2032
BeiDou	✓		
GPS (satellite)	✓		

Disclaimer. The information published here (the "Information") is based on sources that can be considered reliable, typically the manufacturer, but this Information is provided "AS IS" and without guarantee of correctness or completeness. The Information is only indicative and can be changed at any time without notification. No rights can be based on the Information. Suppliers or aggregators of this Information do not accept any liability with regard to the content of (web)pages and other documents, including its Information. The publisher of the Information can not be held liable for the content of 3rd party websites that are linking this Information or are linked to from this Information. You as the User of the Information are solely responsible for the choice and usage of this Information. You are not entitled to transfer, copy or otherwise multiply or distribute the Information. You are obliged to follow the directions of the copyright owner(s) with regard to the use of the Information. Exclusively Dutch law is applicable. With regard to price and stock data on the site, the publisher followed a number of starting points, which are not necessarily relevant for your private or business circumstances. Therefore, the price and stock data are only indicative and are subject to changes. You are personally responsible for the way you use and apply this information. As a user of the Information or sites or documents in which this Information is included, you will adhere to standard fair use including avoidance of spamming, ripping, intellectual-property violations, privacy violations, and any other illegal activity.