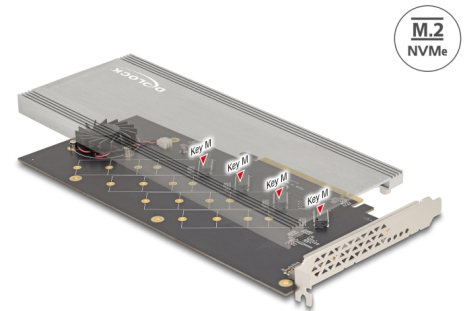


Delock PCI Express 4.0 x16 Card to 4 x internal NVMe M.2 Key M with Heat Sink and Fan - Bifurcation

Description

This PCI Express card by Delock expands the PC by **four M.2 slots**. Up to four M.2 SSDs in format 2280, 2260, 2242 and 2230 can be connected. With the help of the **large heat sink and the fan**, sufficient cooling of the M.2 modules is guaranteed.



PCIe Bifurcation

The card requires the PCIe **bifurcation** of the motherboard to split the PCIe signal in order to use multiple ports.

Note

Without PCIe bifurcation only the first M.2 slot of the card can be used.

Item no. 90079

EAN: 4043619900794

Country of origin: China

Package: Box

Technical details

- Connectors:
internal:
4 x 67 pin M.2 key M slot
1 x PCI Express x16, V4.0
- Interface: PCIe
- Supports M.2 modules in format 2280, 2260, 2242 and 2230 with key M or key B+M based on PCIe
- Maximum height of the components on the module: 1.5 mm, application of double-sided assembled modules supported
- Supports NVM Express (NVMe)
- 4 x LED indicator
- Bootable, ex UEFI version 2.3.1
- Supports S.M.A.R.T.
- Dimensions heat sink (LxWxH): ca. 238 x 95 x 8 mm
- 1 x 40 mm fan for active cooling of the M.2 modules

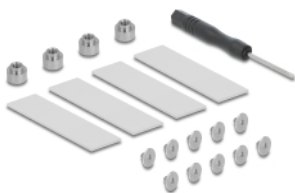
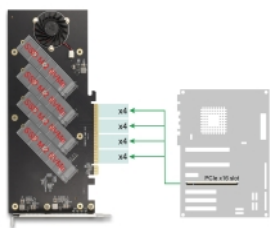
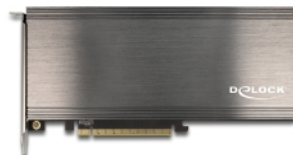
System requirements

- Linux Kernel 5.8 or above
- Windows 8.1/8.1-64/10/10-64/11
- Windows Server 2019
- PC with one free PCI Express x16 / x32 slot
- Motherboard and BIOS with PCIe bifurcation support

Package content

- PCI Express card with fan
- Heat sink
- M.2 mounting material
- Screwdriver
- 4 x thermal conductive pad
- User manual

Images



General

Function:	NVM Express (NVMe) Bootable, ex UEFI 2.3.1 Bifurcation
Supported operating system:	Linux Kernel 5.8.0 or above Windows 10 32-Bit Windows 10 64-Bit Windows 8.1 32-Bit Windows 8.1 64-Bit Windows Server 2019 Windows 11
Slot:	PCIe
Supported module:	M.2 modules in format 2280, 2260, 2242 and 2230 with key M or key B+M based on PCIe
Maximum height of the components on the module:	1.5 mm application of double-sided assembled modules supported

Interface

Internal:	4 x 67 pin M.2 key M slot 1 x PCI Express x16, V4.0
-----------	--

Physical characteristics

Slot bracket:	standard
---------------	----------