

Dell Premier Rechargeable Active Pen

PN7522W

User's Guide



Notes, cautions, and warnings

 **NOTE:** A NOTE indicates important information that helps you make better use of your product.

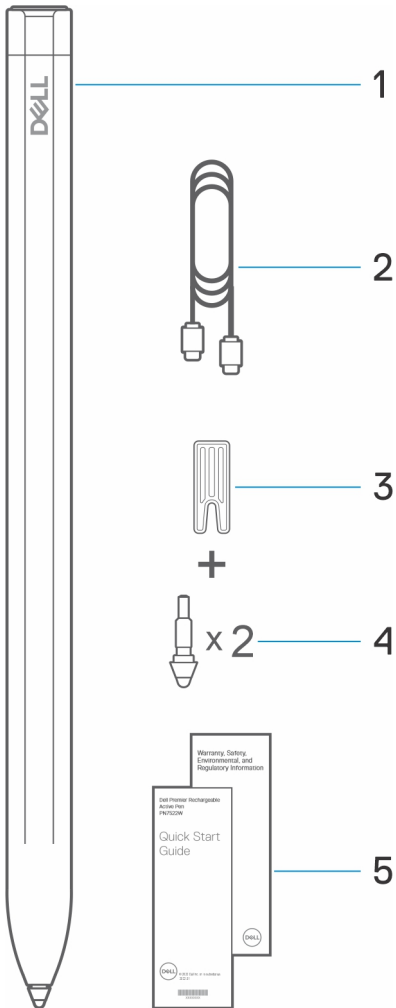
 **CAUTION:** A CAUTION indicates either potential damage to hardware or loss of data and tells you how to avoid the problem.

 **WARNING:** A WARNING indicates a potential for property damage, personal injury, or death.

Contents

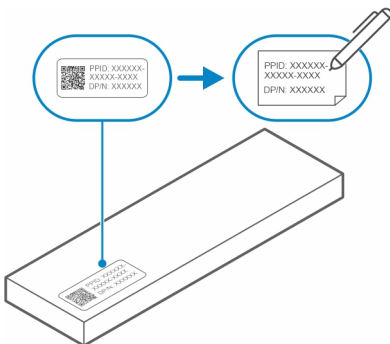
Chapter 1: What's in the box.....	4
Chapter 2: Features.....	6
Chapter 3: Setting up your PN7522W.....	8
Connecting and charging your pen.....	8
Manual Bluetooth pairing.....	8
Chapter 4: Dell Peripheral Manager.....	10
Chapter 5: Holding your PN7522W.....	11
Chapter 6: Specifications.....	12
Chapter 7: Replacing the pen nib.....	13
Chapter 8: Tile.....	14
Chapter 9: Troubleshooting.....	15
Chapter 10: Statutory information.....	16
Chapter 11: Regulatory statement	17
Chapter 12: Getting help and contacting Dell.....	18

What's in the box

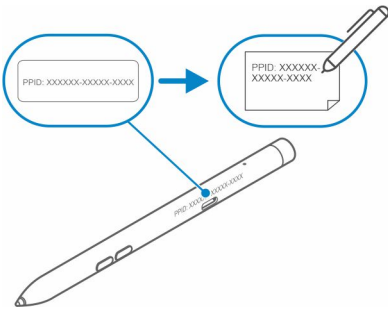


1. Dell Premier Rechargeable Active Pen
2. USB-C to USB-C cable
3. Nib remover
4. Pen nib (2)
5. Documents

i **NOTE:** For warranty purpose, note down the PPID number located behind the box or retain the box.



i **NOTE:** The PPID number can also be noted down from a secondary location on the pen barrel.



Features



Table 1. Features and functionality of your PN7522W

Feature	Functionality
1 Tip	Move the tip over a touchscreen to move the pointer. Enables you to write, draw, and select objects.
2 Bottom barrel button	Press and hold the bottom barrel button and move the tip over the area you want to erase. To change the functionality of this button, see Dell Peripheral Manager .
3 Top barrel button	Press the top barrel button to open the context menu or perform a right-click. To change the functionality of this button, see Dell Peripheral Manager .
4 USB Type-C charging port	<p>NOTE: Ensure that your laptop is connected to Internet before connecting the USB-C cable to your laptop and pen.</p> <p>Connect the USB-C cable to the USB-C port on your pen and your laptop to charge your PN7522W and to establish Bluetooth pairing with your laptop, if not yet paired. After your pen is paired with your laptop through Bluetooth, Dell Peripheral Manager is downloaded automatically.</p>
5 LED indicator	<p>Blue</p> <ul style="list-style-type: none"> Blinking - Bluetooth pairing enabled Solid (for three seconds) - Bluetooth successfully paired <p>White</p> <ul style="list-style-type: none"> Blinking - Updating pen firmware Solid - Pen is charging <p>Amber</p> <p>Blinking - Pen battery is low</p> <p>Green</p> <p>Blinking - Tile is locating the pen</p>
6 Top button	<p>Before pairing your PN7522W with your laptop, press and hold for three seconds to enable pairing mode.</p> <p>After pairing your PN7522W with your laptop:</p> <ul style="list-style-type: none"> Single press — Launch pen menu Double press — Take a screenshot Long press (1.5s) — Launch Sticky Notes Press and hold or press twice in succession to wake your Bluetooth paired laptop from sleep. <p>NOTE: This feature is available only on computers that support Modern Standby mode.</p>

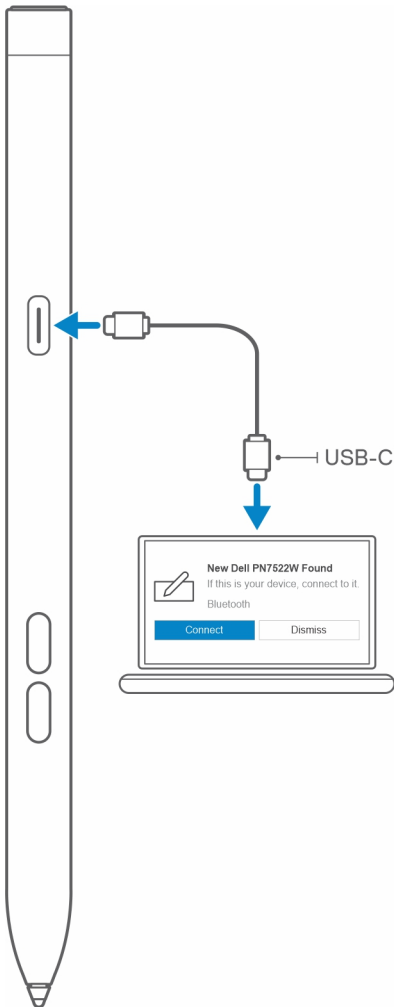
Table 1. Features and functionality of your PN7522W (continued)

Feature	Functionality
	<p data-bbox="687 271 1390 331">① NOTE: These functions are available only in Windows 10 and Windows 11.</p> <p data-bbox="687 349 1442 443">① NOTE: These functions can be changed by re-programming button functionality in Dell Peripheral Manager (DPeM). For more information about installing DPeM, see Dell Peripheral Manager.</p> <p data-bbox="687 461 1326 490">When using Microsoft Powerpoint in Presentation mode:</p> <ul data-bbox="687 506 1289 566" style="list-style-type: none"><li data-bbox="687 506 1129 535">● Press and hold to go to the next slide<li data-bbox="687 539 1289 566">● Press twice in quickly to return to the previous slide <p data-bbox="687 573 1466 667">① NOTE: These functions in Microsoft Powerpoint are available only if Dell Peripheral Manager (DPeM) is installed. For more information about installing DPeM, see Dell Peripheral Manager.</p>

Setting up your PN7522W

Connecting and charging your pen

Connect the pen to your laptop to activate it automatically. The pen will only start working after this activation.



Follow these steps to connect and charge your pen:


1. To charge your PN7522W, connect one end of the Type-C cable to the charging port and the other end to your laptop or tablet.
2. When you connect your PN7522W to your laptop or tablet a pop-up window appears asking you to pair your pen with the laptop through Bluetooth.
3. Click **Connect** to confirm the Bluetooth pairing.


NOTE: Do not remove the USB-C cable until the pen is fully charged.

Manual Bluetooth pairing


About this task

Perform the following steps if you are unable to pair your pen automatically through the USB-C cable connection.

 **NOTE:** You can use your PN7522W only with selected Dell laptops. For the list of supported devices, see www.dell.com.

 **NOTE:** If your PN7522W is already listed under Bluetooth devices, remove it from the list before performing the following steps.

Steps

1. Press and hold the top button for three seconds to enable pairing mode.
The Bluetooth-pairing light starts blinking blue to confirm the pairing mode is enabled.
2. In **Windows Search**, type `Bluetooth`.
3. From the list that appears, tap or click **Bluetooth & other devices**.
4. Ensure that the Bluetooth is enabled.
5. From the list of devices under **Bluetooth & other devices**, tap or click **Dell PN7522W → Pair**.
 **NOTE:** If your PN7522W is not listed, ensure that the pairing mode is enabled on the pen.
6. Confirm the pairing process on both pen and your device.
The Bluetooth-pairing light turns solid blue for few seconds to indicate the pairing is complete and then turns off. After successful pairing, your device and pen connect automatically when Bluetooth is enabled and are within the Bluetooth range.

Dell Peripheral Manager

Use Dell Peripheral Manager (DPeM) to customize the pen buttons, change pressure sensitivity, and so on. The latest version of DPeM is automatically installed on your laptop or tablet when you set up your pen. The installation may take approximately 20 minutes to complete. If DPeM is not installed automatically, perform the following steps:

1. Ensure that you have the latest Windows and Driver updates installed on your laptop or tablet.

i **NOTE:** See the Knowledge Base article [Windows Update: FAQ](#) for information about installing the latest version of Windows and updates.

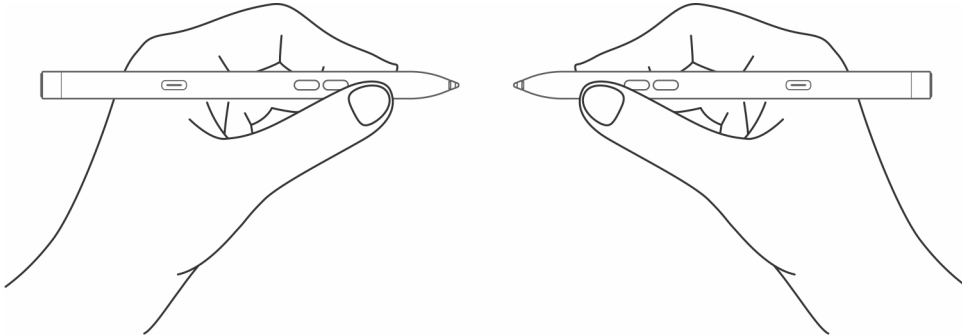
i **NOTE:** Use the SupportAssist application to update the drivers on your laptop, browse to [SupportAssist for PCs and tablets](#).

i **NOTE:** For more information about manually updating drivers, see **How do I download and install a driver?** section of Dell Knowledge base article [Drivers and Downloads FAQs](#).

2. Install DPeM.
 - a. Browse to the [Dell Peripheral Manager](#) download page.
 - b. Tap or click **Download**.
 - c. Once the DPeM installer is downloaded, tap or click the installer to start the installation, and then follow the on-screen instructions.

Holding your PN7522W

Hold your PN7522W as you hold a pencil or pen. Adjust the grip so that you can use the barrel button easily. Ensure that you do not accidentally press the barrel buttons while drawing or positioning the pen.



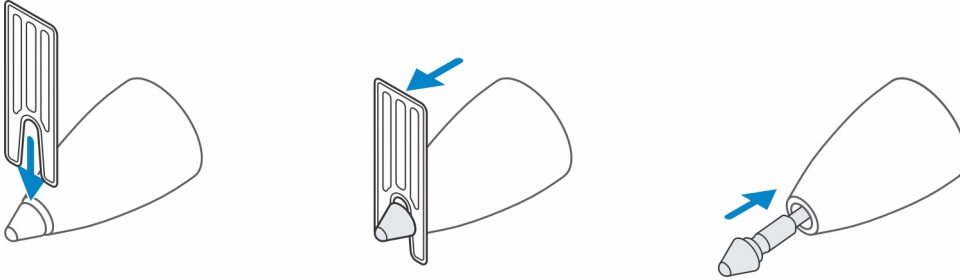
Specifications

Table 2. Specifications of your PN7522W

Model	PN7522W
Dimensions and weight:	
Length	155 mm (6.10 in.)
Diameter	9.80 mm (0.38 in.)
Weight	14.20 g (0.031 lb)
Wireless	Bluetooth Smart Low Energy 5.0
Wireless operating range	10 m (32.80 ft)
Inking technology	<ul style="list-style-type: none"> • AES 1.0/2.0 • WGP
Pen tip detectable height	5 mm to 10 mm (0.20 in. to 0.39 in.)
Batteries	Li-ion rechargeable battery
Supported operating system	<ul style="list-style-type: none"> • Windows 10 • Windows 11
Temperature:	
Stock	-10°C to 55°C (14°F to 131°F)
Operating	5°C to 40°C (41°F to 104°F)
Humidity	30% to 80%
Others	<p>i NOTE: It is recommended that you do not expose the pen to alcohol or solvent solution (including sanitizer).</p>

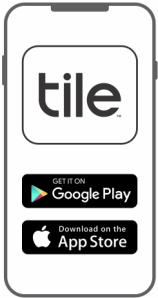
Replacing the pen nib

When the pen nib on your PN7522W is worn out or damaged, replace the pen nib using the nib kit as shown in the following image.

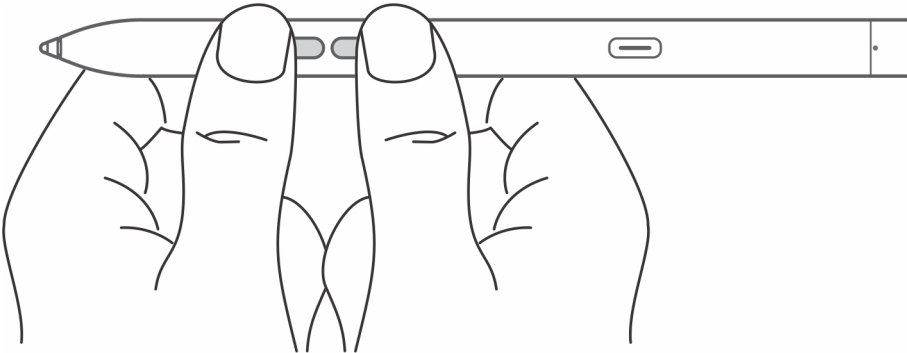


Tile

You can install **Tile** on **Android** or **Apple iOS** devices. It enables you to locate your PN7522W on the **Tile** application. For more information, see the **Tile** application help information on your device.



To enable Tile pairing mode on your pen to sync the Tile app to your pen through Bluetooth, press and hold the top and bottom barrel buttons of your pen.



Troubleshooting

NOTE: You can only use your PN7522W with selected Dell laptops. For a list of supported laptops, see www.dell.com.

Table 3. Dell Active Pen troubleshooting

Problems	Possible causes	Possible solutions
Pen buttons do not work, pen does not write or draw on your laptop.	Laptop does not support the pen.	Pen works only with supported Dell laptops.
	Battery is fully drained.	Charge the pen using the USB-C cable included in the box.
	Charge the pen using the USB-C cable included in the box.	Connect the pen to your laptop using the USB-C cable included in the box.
Pen does not auto-pair with laptop when connected with USB Type-C cable during the first time setup.	Swift Pair function is not enabled in Windows.	On your laptop, go to Windows Settings click or tap on Devices , then Bluetooth & other devices , and then select notifications to connect using Swift Pair .
	USB-C cable is not working.	Replace the USB-C cable.
Unable to pair the pen with your laptop.	Bluetooth driver outdated.	Install the latest Bluetooth driver for your laptop.
Bluetooth pairing light does not turn on.	Battery is fully drained.	Charge the pen with the USB-C cable included in the box.
Default functions for pen buttons do not work as expected.	The default function is changed or overwritten.	Launch DPeM to check the function assignment of the buttons.
Tile app cannot find my pen.	The pen may be outside of Tile's Bluetooth range.	Ensure to use this feature within Tile's Bluetooth range of 10 meters in an unblocked area. If you have lost your pen in a location farther than 10 meters, follow the Tile app's instructions to view its most recent location.
Pen skin peels off.	Alcohol based liquid may damage the pen skin.	Avoid using alcohol based cleaner or sanitiser on the pen directly.
	Unsuitable stock and operating temperature and humidity may damage the pen body.	See Specifications to find more information on the stocking and operating specifications of the pen.

Statutory information

Warranty

Limited warranty and return policies

Dell-branded products carry a three year limited hardware warranty. If purchased together with a Dell system, it will follow the system warranty.

For U.S. customers:

This purchase and your use of this product are subject to Dell's end user agreement, which you can find at www.dell.com/terms. This document contains a binding arbitration clause.

For European, Middle Eastern and African customers:

Dell-branded products that are sold and used are subject to applicable national consumer legal rights, the terms of any retailer sale agreement that you have entered into (which will apply between you and the retailer) and Dell's end user contract terms.

Dell may also provide an additional hardware warranty—full details of the Dell end user contract and warranty terms can be found by going to www.dell.com, selecting your country from the list at the bottom of the "home" page and then clicking the "terms and conditions" link for the end user terms or the "support" link for the warranty terms.

For non-U.S. customers:

Dell-branded products that are sold and used are subject to applicable national consumer legal rights, the terms of any retailer sale agreement that you have entered into (which will apply between you and the retailer) and Dell's warranty terms. Dell may also provide an additional hardware warranty—full details of Dell's warranty terms can be found by going to www.dell.com, selecting your country from the list at the bottom of the "home" page and then clicking the "terms and conditions" link or the "support" link for the warranty terms.

Regulatory statement

FCC notices (U.S. only) and other regulatory information

For FCC notices and other regulatory information, see the regulatory compliance website located at www.dell.com/regulatory_compliance.

This device complies with Part 15 of the FCC Rules. Operation is subject to the following two conditions:

1. This device may not cause harmful interference.
2. This device must accept any interference received including interference that may cause undesired operation.

 **CAUTION: Changes or modifications on this unit that are not expressly approved by the party responsible for compliance which could void the user's authority to operate the equipment.**

This equipment has been tested and found to comply with the limits for a class B digital device, pursuant to part 15 of the FCC Rules. These limits are designed to provide reasonable protection against harmful interference in a residential installation. This equipment generates, uses and can radiate radio frequency energy and if not installed and used in accordance with the instructions, may cause harmful interference to radio communications. However, there is no guarantee that interference will not occur in a particular installation. If this equipment does cause harmful interference to radio or television reception, which can be determined by turning the equipment off and on, the user is encouraged to try to correct the interference by one or more of the following measures:

- Reorient or relocate the receiving antenna.
- Increase the separation between the equipment and receiver.
- Connect the equipment into an outlet on a circuit different from that to which the receiver is connected.
- Consult the dealer or an experienced radio/TV technician for help.

Shielded cables must be used with this unit to ensure compliance with the Class B FCC Limits.

Getting help and contacting Dell

Contacting Dell

To contact Dell for sales, technical support, or customer service issues, see www.dell.com/contactdell.

NOTE: Availability varies by country and product, and some services may not be available in your country.

NOTE: If you do not have an active internet connection, you can find contact information on your purchase invoice, packing slip, bill, or Dell product catalog.

Self-help resources

You can get information and help on Dell products and services using these online self-help resources:

Table 4. Getting help and contacting Dell

Information about Dell products and services	www.dell.com/support
Online help for operating system	www.dell.com/support/windows
Troubleshooting information, user manuals, setup instructions, product specifications, technical help blogs, drivers, software updates, and so on.	www.dell.com/support