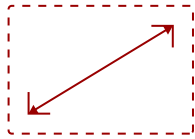


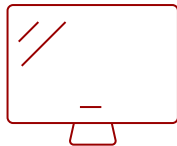
IFP6562

Key Features

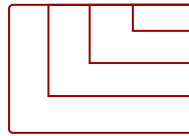
- High-Performance 4K Touchscreen
- Sleek and Slim Design
- Convenient USB Type-C
- Built-in Microphone Array
- Optional Slot-in PC



65
DISPLAY



PANEL



RESOLUTION



Product Description

From executive boardrooms to interactive huddle spaces, the ViewSonic® ViewBoard® IFP6562 enables limitless collaboration and endless innovation. Designed to help teams connect, collaborate, and create, this next-generation digital whiteboard delivers exactly what you need to move your ideas forward. A premium, state-of-the-art design features a bezel-less PCAP (projected capacitive) touchscreen with incredible 4K Ultra HD resolution. This highly accurate interactive screen provides for an incredibly natural and responsive handwriting experience. Using fingers, styluses, or both, multiple users can simultaneously write or draw on the huge 65" ViewBoard panel. What's more, meetings and presentations start fast thanks to convenient one-wire USB-C connectivity.

Specifications

More Information

Display Type

LCD

Screen Size	65
Viewable Area (in.)	64.5
Light Source	LED
Resolution	3840 x 2160
Aspect Ratio	16:9
Static Contrast Ratio	5,000:1
Backlight Life (Hours)	30,000
Brightness	350 cd/m2
Response Time (Typical GTG)	8ms
Viewing Angles	178° horizontal, 178° vertical
Panel Surface	Anti-glare 9H tempered glass
Ethernet LAN	10/100 Mbps for Embedded Player; 10/100/1000 Mbps for Slot-in
OS	Android 8.0
CPU	ARM Quad Core Cortex A73
CPU Processor Speed	1.2GHz
Memory	3GB
Storage	32GB
Internal Speakers	12W (x2)
Subwoofer	15W (x1)
HDMI 2.0 In	4
HDMI 4K Out	1
3.5mm Audio Out	1
SPDIF Audio Out	1
USB 3.0	5
USB 2.0	1
USB 3.1 Type C	1
Slot-in PC Slot	1
USB B Touch Port	2
RS232	1
Ethernet LAN (RJ45)	2
WIFI Module Slot	1
Intel® OPS Slot In (80-pin)	1
Voltage	100-240 VAC
Consumption (max)	390W
Consumption (typical)	115W
Stand-by	<0.5W

Temperature	32-104° F (0 - 40° C)
Humidity (non-condensing)	10-90%
Touch Technology	Projective Capacitive
Touch Points	20-Point Touch
Tip Detection	Finger or Active Pen
Net (lbs)	82.5
Gross (lbs)	107.8
Net (kg)	37.4
Gross (kg)	48.9
Packaging (in.)	63.3 x 39.8 x 8.5
Physical (in.)	58.7 x 35.7 x 3.1
Packaging (mm)	1607.0 x 1010.0 x 215.0
Physical (mm)	1492.0 x 907.0 x 78.0
VESA Compatible	600 x 400 mm
Warranty	3-year limited warranty on parts, labor and backlight, onsite warranty
Recycle/Disposal	Please dispose of in accordance with local, state or federal laws.
PACKAGE CONTENTS	IFP6562 display, power cable, HDMI cable, USB cable Type C, USB Cable for Touch, Passive Stylus x 2, RS232 Adapter, Clamp x 5, remote control with batteries, Camera plate, screw x 8, Quick Start Guide
Regulations	CTUVus, FCC, Energy 8.0, EPEAT, Mexico, CE, CB, ErP, REACH, UKCA



Contact Sales
ViewSonic.com
 888.881.8781
 email:
salesinfo@viewsonic.com