

Delock Easy 45 Surface-mounted Housing 152 x 82 mm, white

Description

This surface-mounted housing by Delock is used to mount Easy 45 modules on-wall. The frame is made of sturdy plastic and thus offers optimal protection for the electrical installation. A cable entry is possible from the side as well as through the back.

Easy 45 connects

Easy 45 is a variable, modular system that allows components such as sockets, HDMI or USB connections to be added according to your needs. The Easy 45 modules are standardised and can be mounted in various module holder or cable ducts. Easy 45 builds the interface between electrical, network and system installation and many peripheral devices such as TV, monitors, printers, laptops and much more.



Application

Item no. 81333

EAN: 4043619813339

Country of origin: China

Package: Box

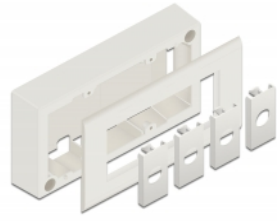
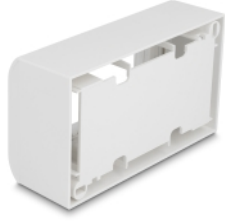
Technical details

- Material: PC plastic
- Cable entry from side or backside
- Suitable for Easy 45 modules
- Module cutout: 9 mm x 45 mm
- Mounting depth: 40 mm
- Colour: white
- Dimensions (LxWxH): ca. 152 x 82 x 50 mm

Package content

- Surface-mounted housing
- Screws

Images



General

Mounting type:	Easy 45
----------------	---------

Physical characteristics

Length:	82 mm
Width:	152 mm
Height:	50 mm
Colour:	RAL 9003 Weiß