



Prodigy M 2022

ARGB

BitFenix Prodigy M 2022

Timeless Design With RTX 3090 & RX6900XT Ready

The prodigy of BitFenix started with the BitFenix Prodigy and the newest generation of BitFenix Prodigy M 2022 Chassis redefines chassis just like the original Prodigy.

The compact and modern chassis with high quality tempered glass is suspended on Reinforce handles to showcase the components. With the support of up to top tier NVIDIA RTX 3090 series and AMD RX6900XT series GPUs or the Titanium ATX power supplies, the new Prodigy M 2022 efficiently supports large components with a smart layout design.

The modular brackets allows the PSU and HDDs to be mounted on different locations clearing the way for support for up to 280mm radiator at the top and 120mm radiator in the rear. Pairing this up with the choice for either vertical or horizontal GPU mount and rich assortment of accessories, makes the new Prodigy M 2022 an ideal chassis for a variety of builds.

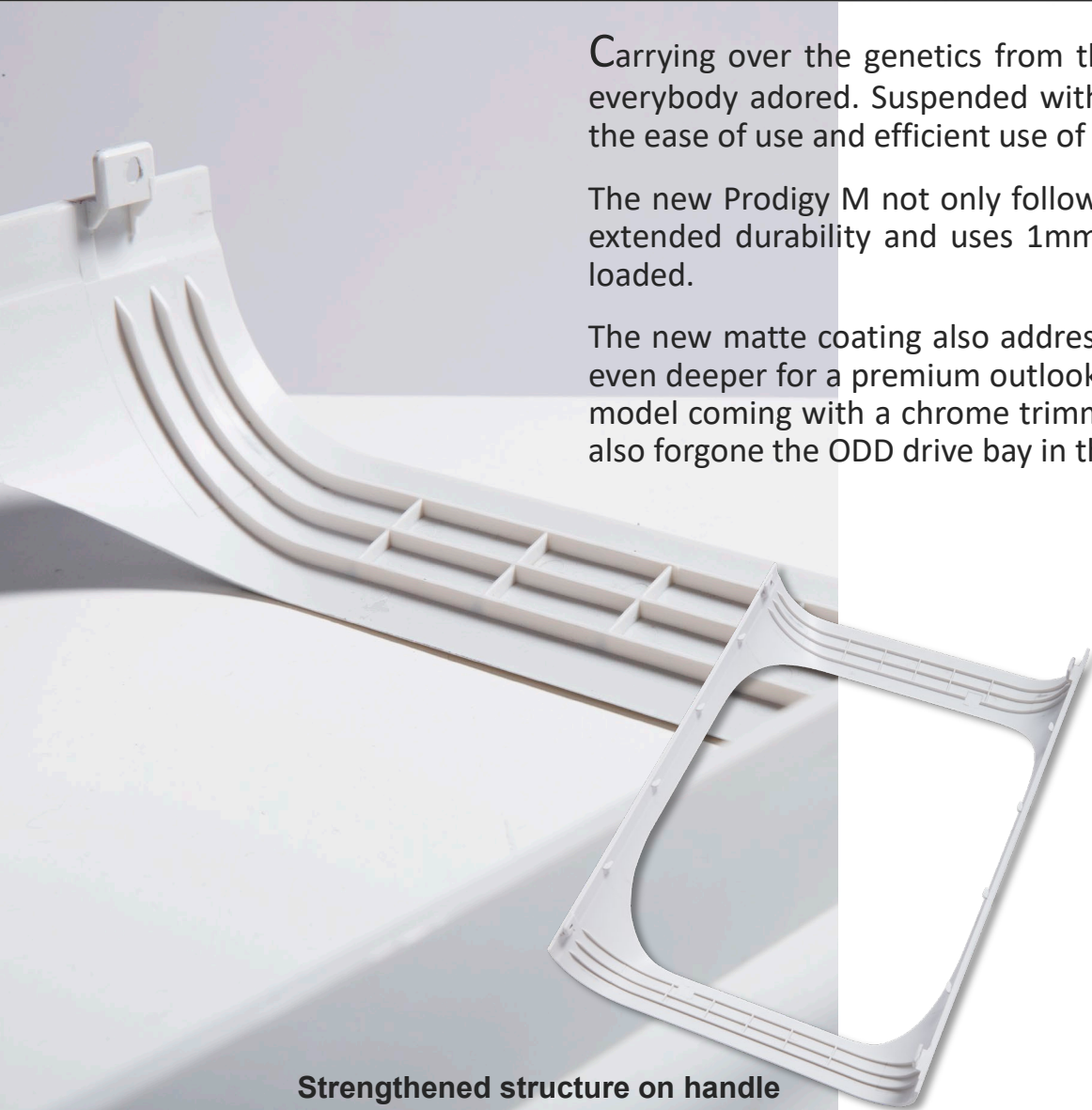


Prodigy Timeless Design With Strengthened Handles And Durable Matte Coating

Carrying over the genetics from the original Prodigy, the new Prodigy M still retains the core designed elements that everybody adored. Suspended with flexible handles, the new Prodigy M follows functional design thinking to maximize the ease of use and efficient use of space.

The new Prodigy M not only follows up on the popular design, but it also enhances on it with strengthened handles for extended durability and uses 1mm thick metal to keep the overall chassis rigid and deformation-free even when fully loaded.

The new matte coating also addresses the durability of the original Prodigy while making the whites brighter and blacks even deeper for a premium outlook. This premium design theme is further enhanced by the attention to detail with black model coming with a chrome trimmings and white model being designed to look as pure and clean as possible. We have also forgone the ODD drive bay in the front to maximize the airflow and to offer a clean front panel.



Strengthened structure on handle

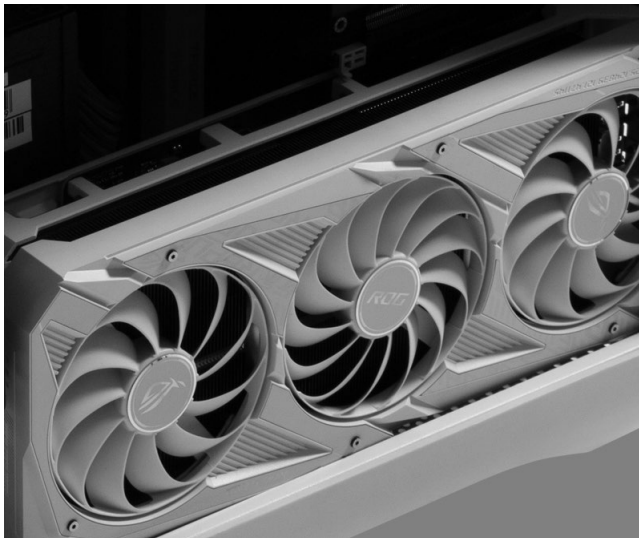


Express Yourself With Either Vertical or Horizontal GPU Setup



The acrylic on top and 4mm tempered glass on sides allows for an unrestricted view into the components while neatly hiding the cables in the back for an aesthetically pleasing build. Two GPU mounting points are designed into the chassis to give you the freedom to install a GPU of up to 339mm either on the top horizontally or on the side vertically.

If you are worried that the temperature of the graphics card is too hot, you can switch the filter at any time. Most 3090 & 6900 graphics cards can be installed.



There might be space constraints if the PSU is longer than 220mm and the GPU is over 339mm.

* It is recommended to be less than 185mm to get the best installation experience.

* Does not include pci-e extension cable.

RTX 3090 or RX6900XT Ready – GPU Clearance Up To 339mm



Built from ground up with a smart layout design, the Prodigy M not only offers multiple GPU mounting options, but it can be installed with the best graphics cards available in the market with support of up to RTX 3090 or RX6900XT. This means a GPU Clearance of 339mm no matter whether you utilize the top mount or the side mount for the installation.

Vertical GPU Support With 280mm Water Cooling Solutions

While being a small chassis, the Prodigy M offers big installation options. The GPU can be installed either horizontally at the top or vertically at the side to showcase without overheating issues. This cooling performance can be further enhanced by installing up to 2x 120mm fans at the bottom of the chassis.

All these can be paired up with water cooling solutions of up to 280mm length and the included bracket makes it a breeze to install your favorite water cooling solution.

Vertical GPU Bracket



Pre-installed High Air Flow 6010 Fan Blowing Direct To GPU

Preinstalled in the Prodigy M 2022 is a 6010 fan (60 x 60 x 10mm) blowing direct to GPU which helps maximize the airflow to the GPU. Unlike standard compact fans, the ones included in the Prodigy M 2022 are custom fine tuned and profiled by BitFenix airflow engineers to have a noise level of only 25.7dB(A) at 2300 \pm 10% RPM.

Prodigy M 2022 Built-in 6010 Fan

Dimension	60*60*10 mm
Rated Voltage	DC 12V
Rated Current	0.12A Max
Speed	2300 \pm 10% RPM
Air Flow	10.25CFM
Static Pressure	1.78 mm-H ₂ O
Noise Level	25.7 dB (A)



High Thermal Efficiency Regardless of Vertical Horizontal GPU

Vertical GPU Set Up With 280mm Water Cooling

CPU/ GPU	Vertical GPU	Cooling	Bottom Fan 120mm	Top panel	Front Fan 60mm	Software	CPU AVG	CPU MAX	GPU AVG	GPU MAX
I9 9900K / RTX3060	YES	AIO 280	1	Top 140mm fan x2	1	3dmark fire strike ultra	36.5	65.5	53.1	67.9

Room temperature: 25°C

Horizontal GPU Set Up With Air Cooling Up To 190mm

CPU/ GPU	Vertical GPU	Cooling	Bottom Fan 120mm	Top panel	Front Fan 60mm	Software	CPU AVG	CPU MAX	GPU AVG	GPU MAX
I9 10900K / RTX3090	NO	Scyth	1	Acrylic	1	3dmark fire strike ultra	47	94	70.65	85.2

Room temperature: 25°C

Air Cooling: Scyth SCKTT-2000T
AIO Water Cooling: NZXT Kraken X63 280mm
GPU: ROG-STRIX-RTX3060-O12G-GAMING & GeForce RTX™ 3090 GAMING X TRIO 24G

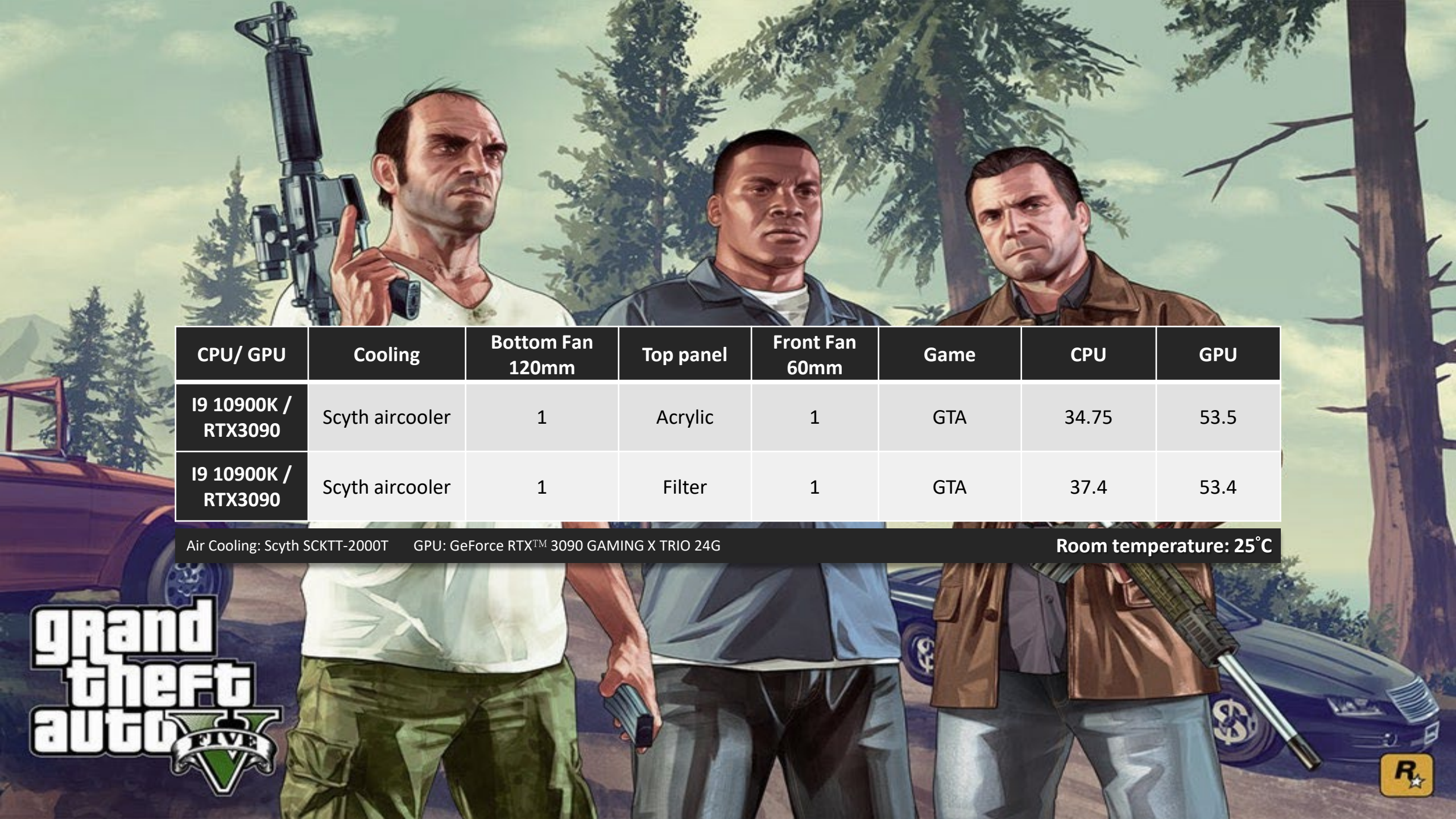
High Thermal Efficiency Regardless of Vertical or Horizontal GPU

High Thermal Efficiency At 4.4 Ghz

CPU/ GPU	Vertical GPU	Cooling	Bottom Fan 120mm	Top panel	Front Fan 60mm	Software	CPU AVG	CPU MAX	GPU AVG	GPU MAX
i7-6700k 4.4 Ghz / RTX 3090	NO	Scyth aircooler	1	Acrylic	1	furmark + p95	50	78	66.1	82.5
i7-6700k 4.4 Ghz / 1080TI	NO	Scyth aircooler	1	Filter	1	furmark + p95	74.75	96	73.325	79
i7-6700k 4.4 Ghz / 1080TI	NO	Scyth aircooler	1	Acrylic	1	furmark + p95	74.33	95	76.16	81.8

Room temperature: 25°C

Air Cooling: Scyth SCKTT-2000T
GPU: ROG-STRIX-GTX1080TI-O11G-GAMING & GeForce RTX™ 3090 GAMING X TRIO 24G



CPU/ GPU	Cooling	Bottom Fan 120mm	Top panel	Front Fan 60mm	Game	CPU	GPU
I9 10900K / RTX3090	Scyth aircooler	1	Acrylic	1	GTA	34.75	53.5
I9 10900K / RTX3090	Scyth aircooler	1	Filter	1	GTA	37.4	53.4

Air Cooling: Scyth SCKTT-2000T GPU: GeForce RTX™ 3090 GAMING X TRIO 24G Room temperature: 25°C



ROCKSTAR GAMES PRESENTS

RED DEAD REDEMPTION II

CPU/ GPU	Cooling	Bottom Fan 120mm	Top panel	Front Fan 60mm	Game	CPU	GPU
I9 10900K / RTX3090	Scyth aircooler	1	Acrylic	1	Red Dead Redemption 2	54.25	81.5
I9 10900K / RTX3090	Scyth aircooler	1	Filter	1	Red Dead Redemption 2	44.6	76.8

Air Cooling: Scyth SCKTT-2000T

GPU: GeForce RTX™ 3090 GAMING X TRIO 24G

Room temperature: 25°C

High Thermal Efficiency Regardless of Vertical or Horizontal GPU



Front Fan : 120mm fan *1 & 60 mm fan *1
or 60mm *2

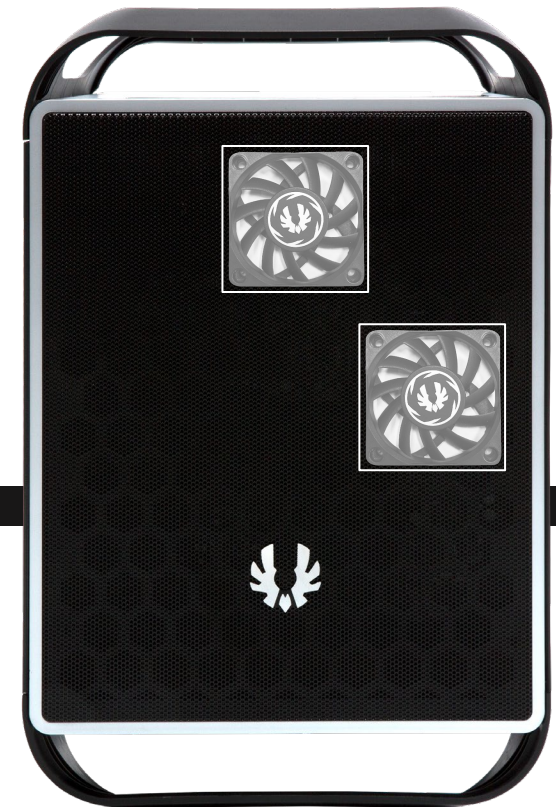
Top Fan : 120mm fan *2 or 140mm fan *2

Bottom plate Fan : 120mm fan *2

Back Fan : 120mm fan *1

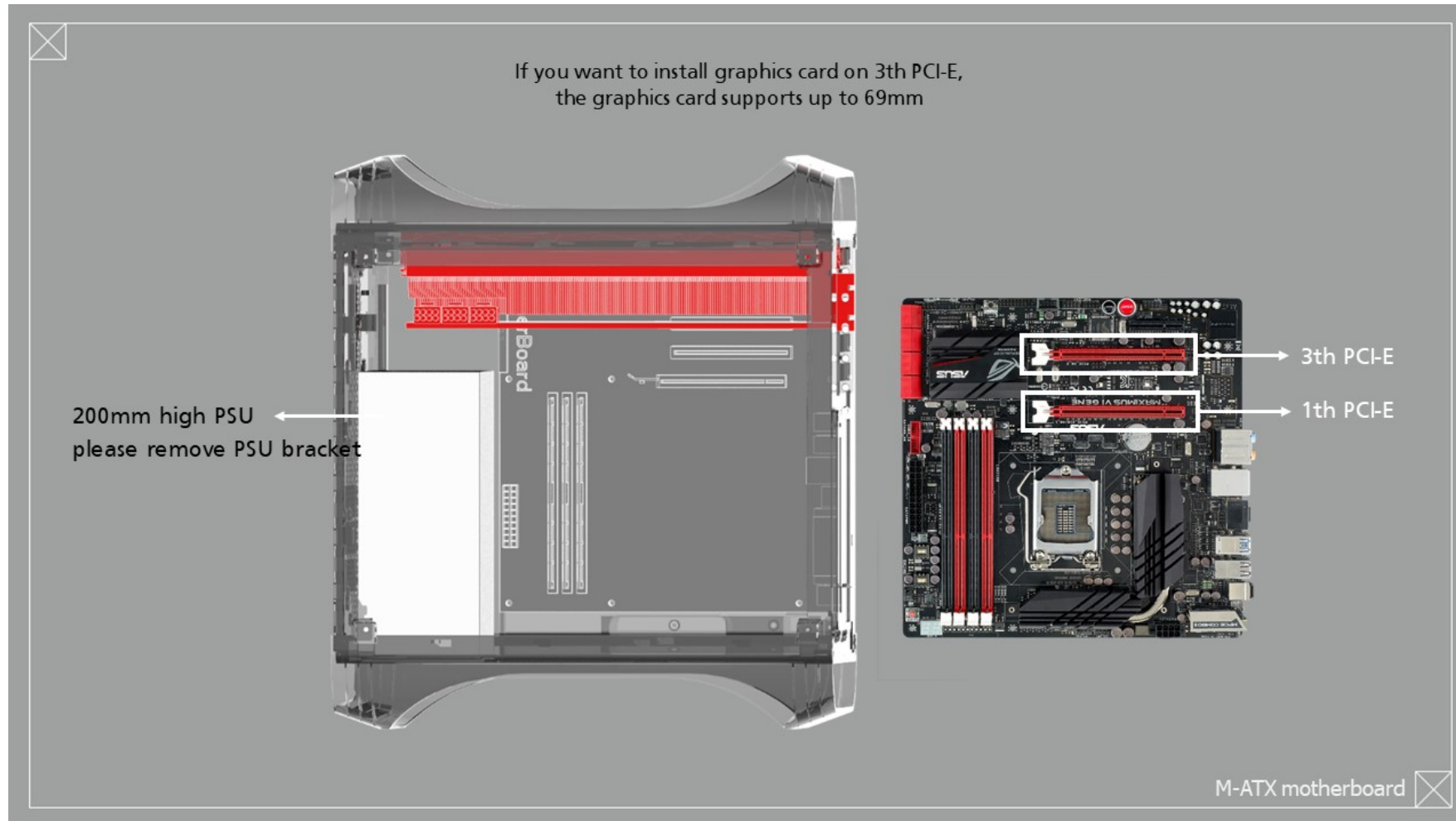
Max CPU Cooler height: 190mm

Max Radiator : 280mm

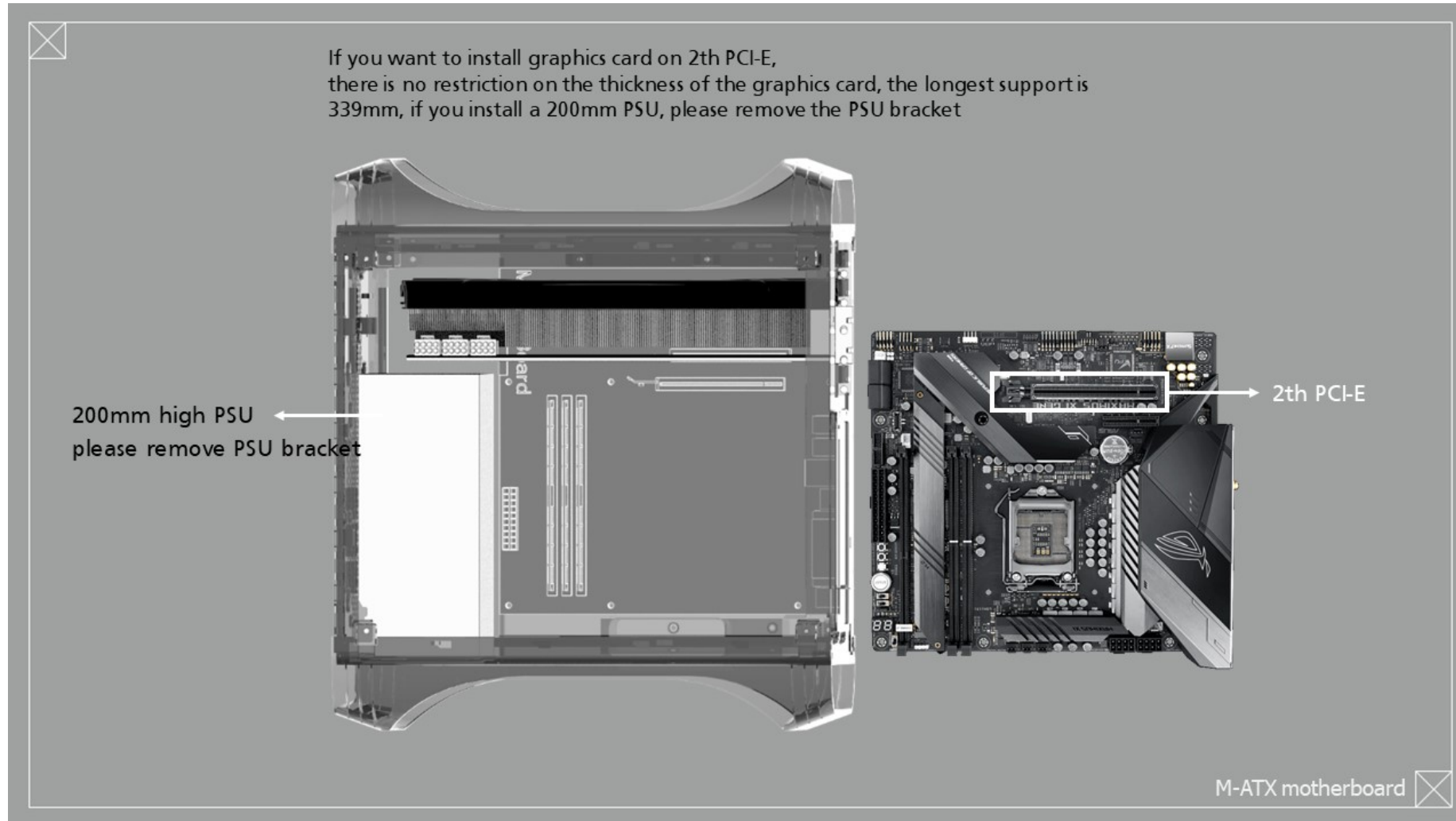


Pre-installed standoffs Perfectly Compatible With ITX / M-ATX Motherboards Regardless of Vertical or Horizontal GPU

The BitFenix Prodigy M comes preinstalled with motherboard standoffs that perfectly supports both ITX and mATX out of the box. No adjusting of the standoffs are required unlike majority of the chassis in the market.

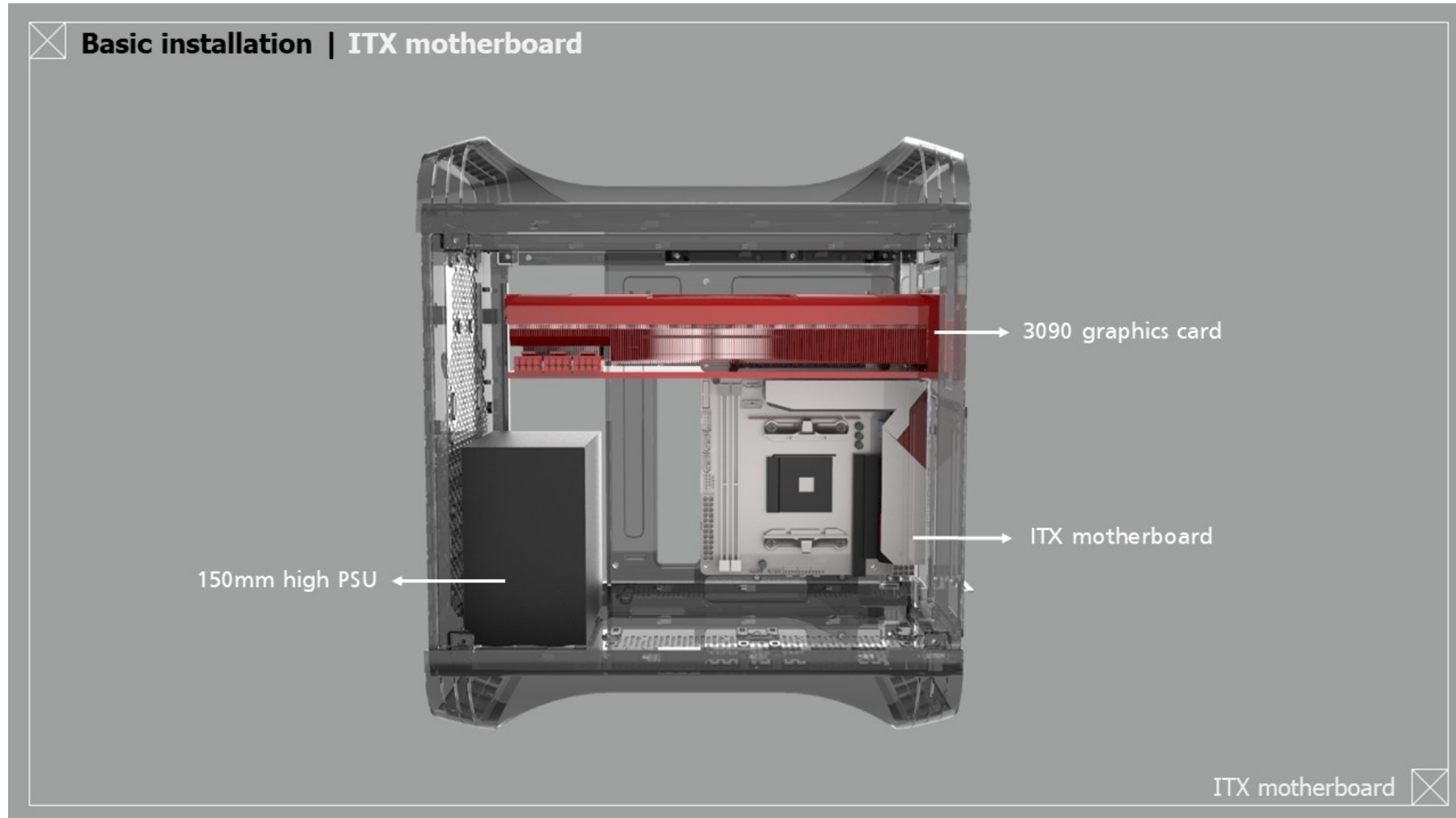


Pre-installed standoffs Perfectly Compatible With ITX / M-ATX Motherboards Regardless of Vertical or Horizontal GPU



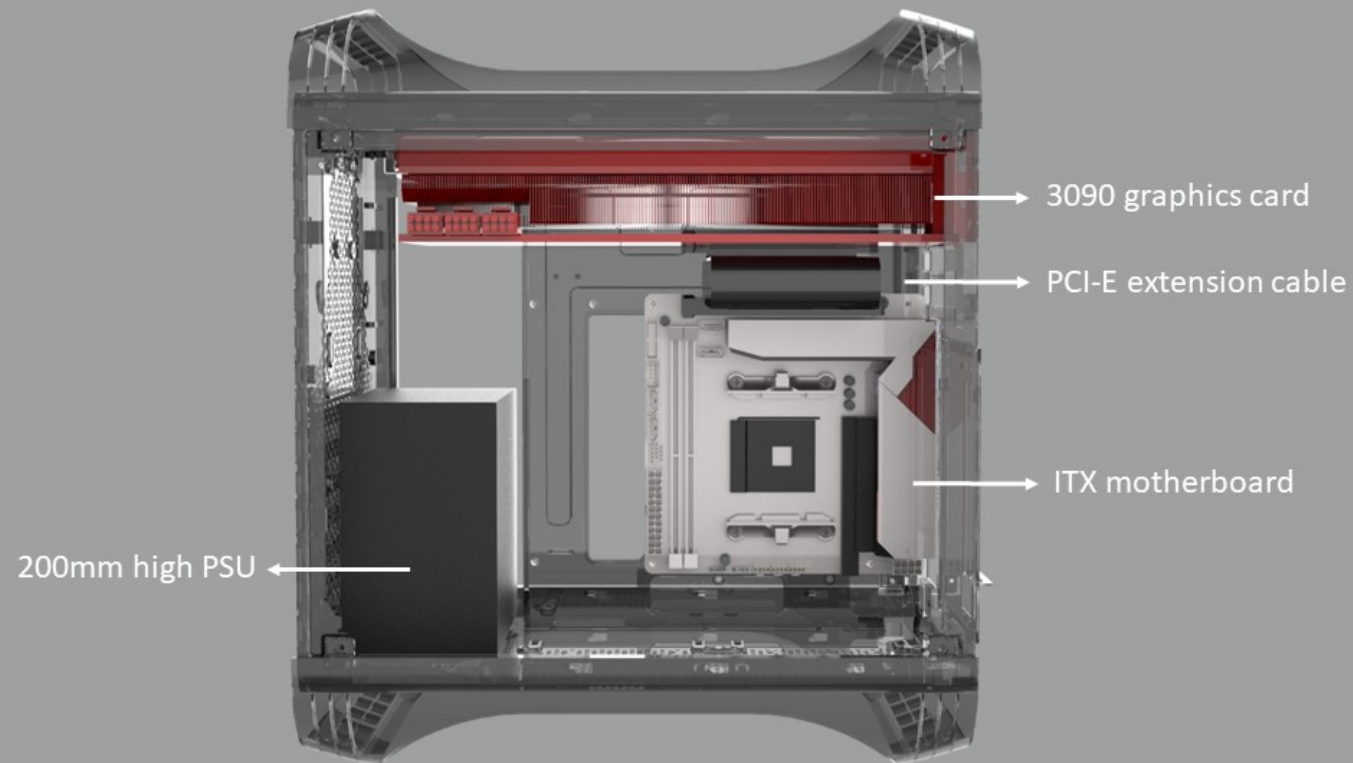
Pre-installed standoffs Perfectly Compatible With ITX / M-ATX Motherboards Regardless of Vertical or Horizontal GPU

Pre-installed standoffs Perfectly Compatible With ITX / M-ATX Motherboards Regardless of Vertical or Horizontal GPU



Pre-installed standoffs Perfectly Compatible With ITX / M-ATX Motherboards Regardless of Vertical or Horizontal GPU

If you use a 200mm high PSU, please remove the PSU bracket and use a PCI-E extension cable to connect your motherboard and graphics card.



ITX motherboard

Reliability & Safety With 13A Power Extension Cable



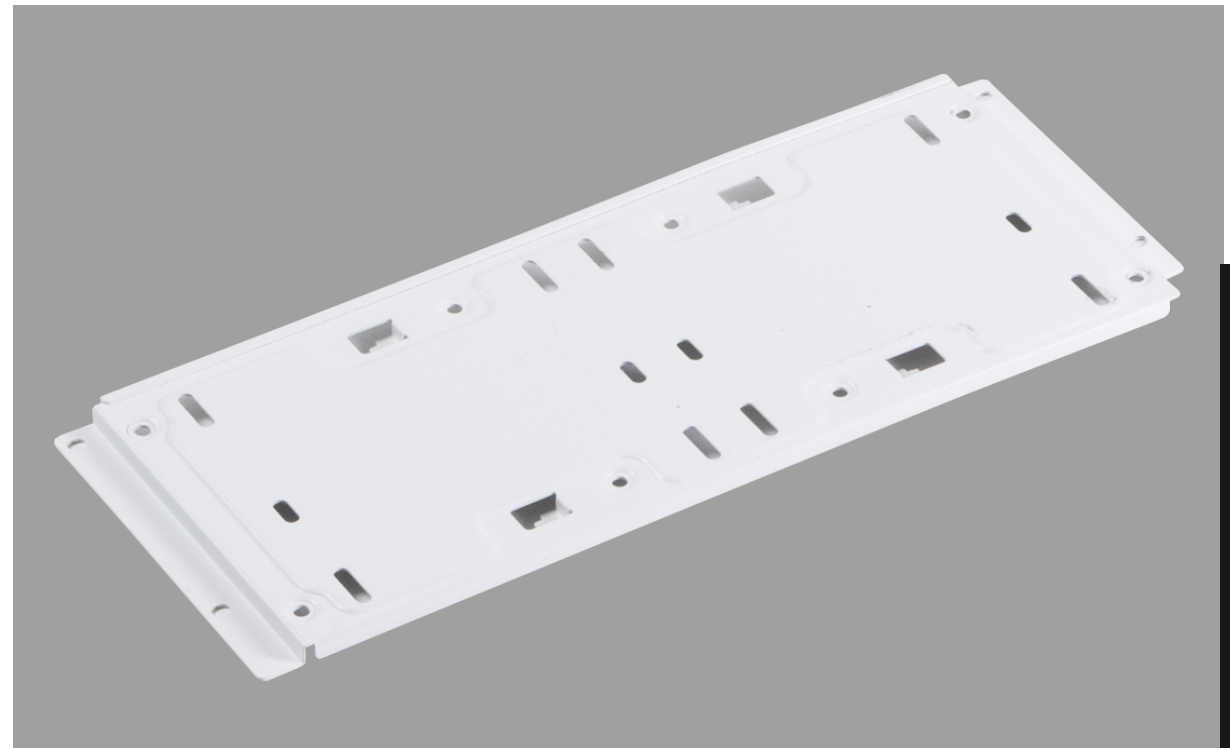
With support for the most high end components available, a robust and reliable power delivery is very important. While most compact chassis use 10A power extension cable, the Prodigy M uses 13A extension cable for both reliability and safety at high power load levels.

Big Storage In Small Chassis - Up to 2+2 3.5" drives and 2+3 2.5" drives



Although the Prodigy M is compact, it does not skimp on storage space. With the support of up to 2+2 3.5" drives and 2+3 2.5" drives the Prodigy M will satisfy all your storage needs.

These mounting options are available at the bottom plate and also the modular side bracket.



Easy Access Front I/O With USB 3.2 Gen 2 Type-C

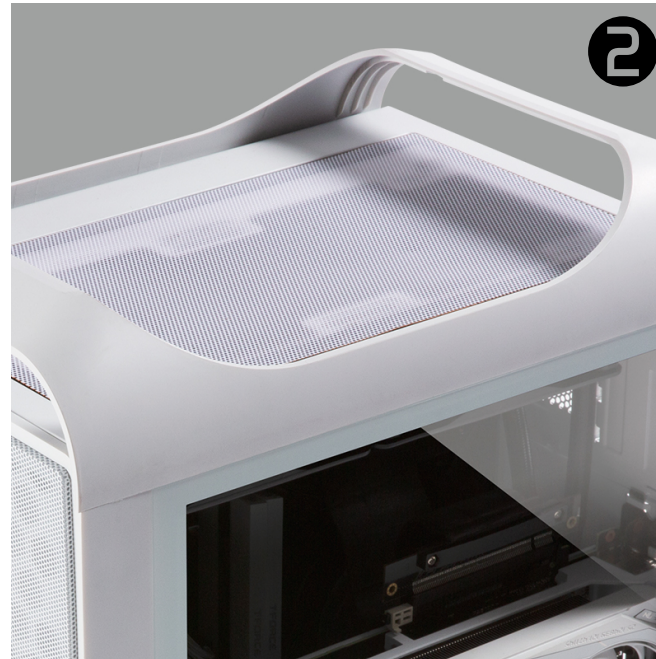
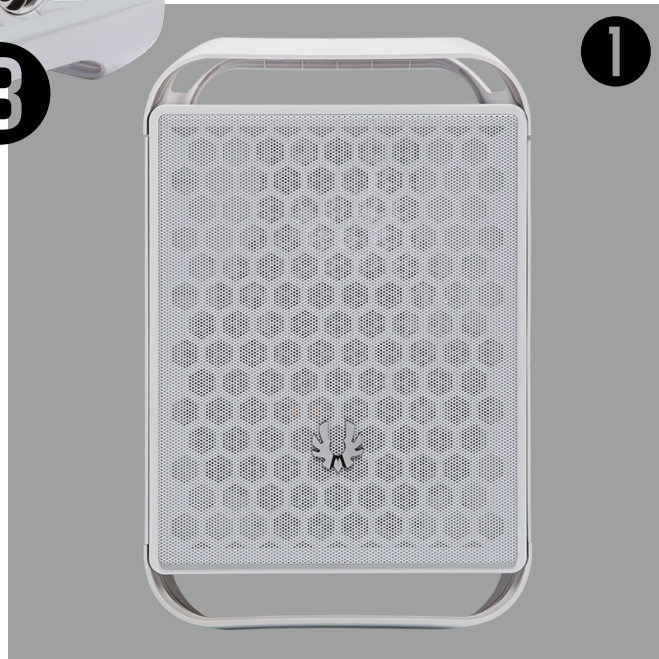
Taking the ease of use a notch up, we have installed a slew of IO ports on the side panel for quick and easy access. A single USB 3.2 Gen 2 Type-C port along with two USB 3.0 Type-A ports offer high speed connectivity at your fingertips while that standard 3.5mm audio jacks rounds off the all your connectivity needs.



Dust Free Design With Easy Removable Dust Filters



While BitFenix Prodigy M (2022) offers the clean and refreshing look for the build, it also keeps all those high performance components free of dust. The Prodigy M (2022) comes preinstalled with easily removable magnetic dust filters at the front, top and also for the Power Supply Unit at the bottom. All these filters are 3 sided for the best dust filtering possible. This means that a system built around the new Prodigy M is going to be reliable and robust for a long time while also looking sleek.



ARGB Edition



1



2



3

1. ARGB Fan
2. ARGB & Fan Controller Remote control
3. 300mm ARGB LED Strips



1

2



3





	BFC-PM2-300-KKGSK-RP	BFC-PM2-300-WWGSW-RP	BFC-PM2-300-KKGSK-3A	BFC-PM2-300-WWGSW-3A
Including 60mm Fan	1 x black 60mm fan	1 x white 60mm fan	1 x black 60mm fan	1 x white 60mm fan
Including 120mm Fan	1 x black fan	1 x white fan	3 x ARGB black fans	3 x ARGB white fans
ARGB LED strips	-	-	2 x 30cm with 2 x cables	2 x 30cm with 2 x cables
SE Controller	-	-	√	√
SE Remote	-	-	√	√

Product Specifications

		PRODIGY M 2022 ARGB - WHITE	PRODIGY M 2022 ARGB - BLACK
MATERIALS		White Steel, White Plastic, Tempered glass	Black Steel, Black Plastic, Tempered glass
DIMENSIONS(W X H X D)		250mm(9.8inch) x 404mm(15.9inch) x 359mm(14.1inch)	
MOTHERBOARD SUPPORTS		Mini-ITX, MicroATX	
AIR COOLER HEIGHT SUPPORT		190mm	
VGA LENGTH SUPPORT		up to 339mm	
VERTICAL VGA LENGTH SUPPORT		Length up to 339mm / 2 Slot / Thickness up to 55 mm	
CABLE MANAGEMENT SUPPORT		up to 44mm	
3.5" DRIVE BAY		2+2	
2.5" DRIVE BAY		2+3	
FAN MOUNTS	FRONT	1 x 120mm or 2 x 60mm	
	TOP	2 x 120mm or 2 x 140mm	
	REAR	1 x 120mm	
	BOTTOM	2 x 120mm	
INCLUDED COOLING FAN	FRONT	1x 60mm White Fan	1x 60mm Black Fan
	REAR	1x 120mm ARGB Fan (White Frame)	2x 120mm ARGB Fan (Black Frame)
	BOTTOM	2x 120mm ARGB Fan (White Frame)	1x 120mm ARGB Fan (Black Frame)
RADIATOR SUPPORT	TOP	240mm x 1 / 280mm x 1	
	REAR	120mm x 1	
PCI-E SLOTS		5 Slots	
I/O PORTS		2 x USB 3.0, Audio IO, USB Type-C x1	
POWER SUPPLY		ATX & Standard up to 220mm, recommended under 185mm	