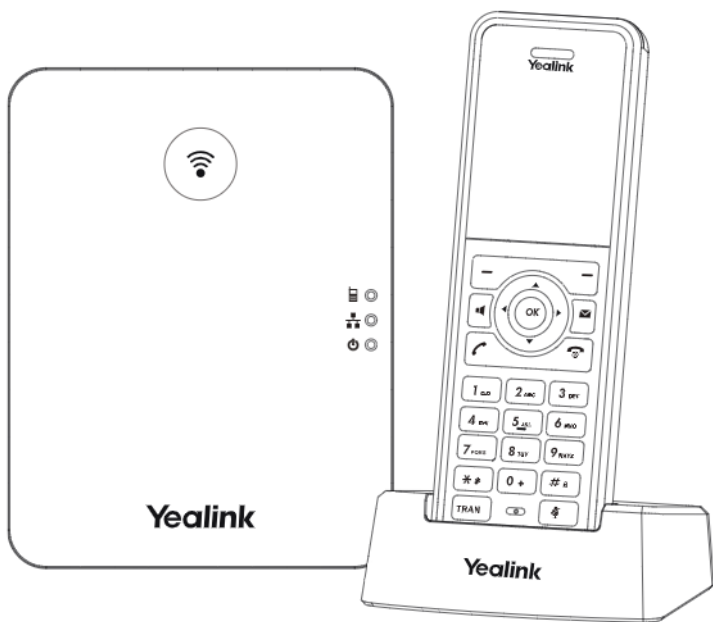


# Yealink

## DECT IP Phone W79P



Quick Start Guide (V1.0)



## W79P Package Contents



W59R Handset



W70B Base Station



2 Power Adapters



Battery Cover



Rechargeable Battery



Decorative Cover



Charging Cradle



Ethernet Cable



Base Stand



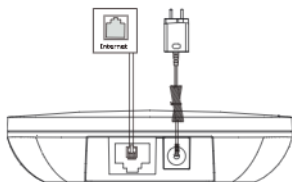
Quick Start Guide

**Note:** Yealink W79P DECT IP phone consists of one W70B base station and one W59R handset.

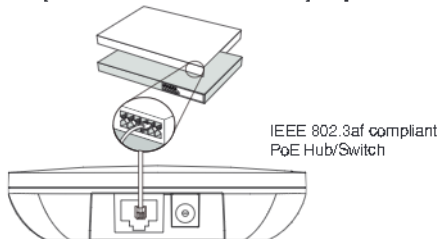
## Assembling the DECT Phone

**1. Connect the base station power and the network using method a or method b.**

### a. AC Power Option



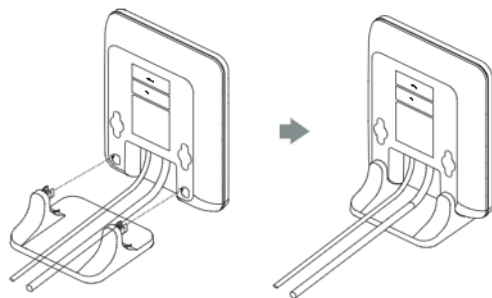
### b. PoE (Power over Ethernet) Option



- Note:**
- If you choose method a, use Yealink supplied power adapter (5V/0.6A). A third-party power adapter may damage the base station.
  - If you choose method b, you do not need to connect the power adapter. Make sure the hub/switch is PoE-compliant.

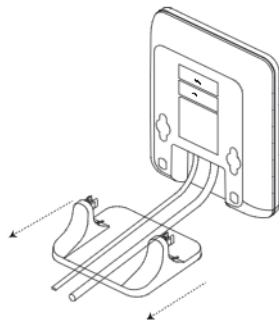
## 2a. (Desktop Installation) Attach and remove the base stand.

### Attach the Base Stand



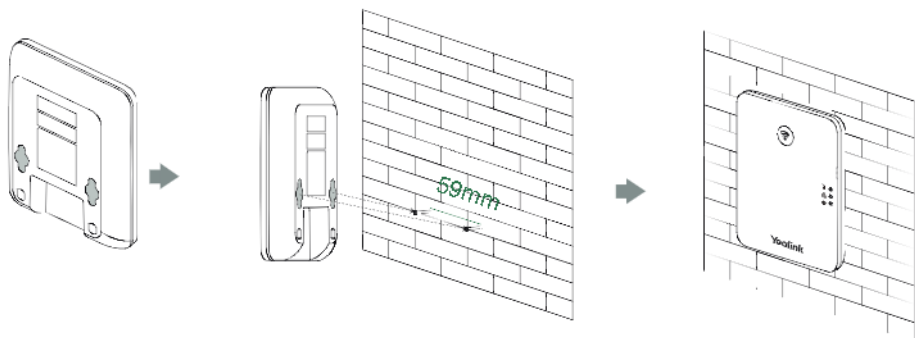
Align the snap-fits with the corresponding holes and push forward, snapping them into the holes.

### Remove the Base Stand

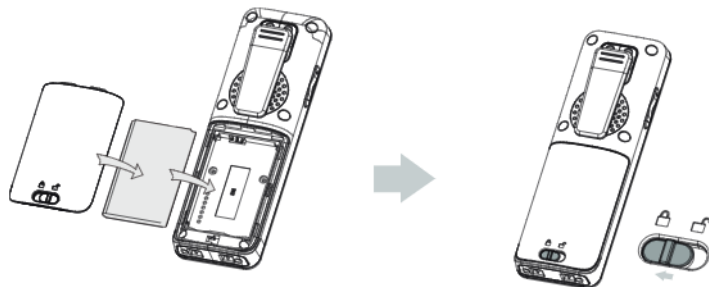


Remove the snap-fits from the holes horizontally.

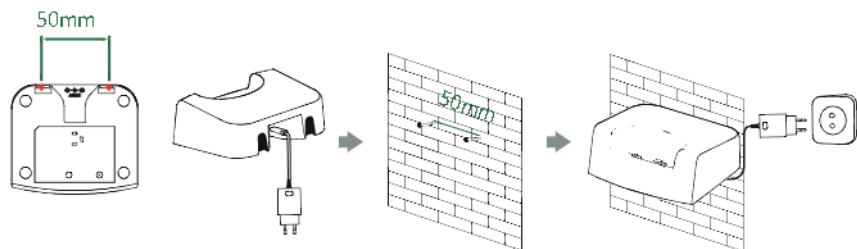
## 2b. (Wall-Mount Installation) Attach the base station.



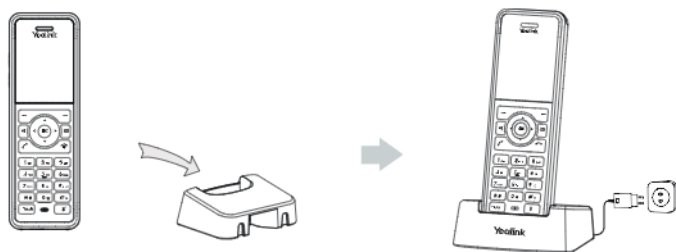
## 3. Insert the battery into the handset.



#### 4. (Optional) Mount the charging cradle to the wall.



#### 5. Connect the charging cradle and charge the handset.



#### Note:

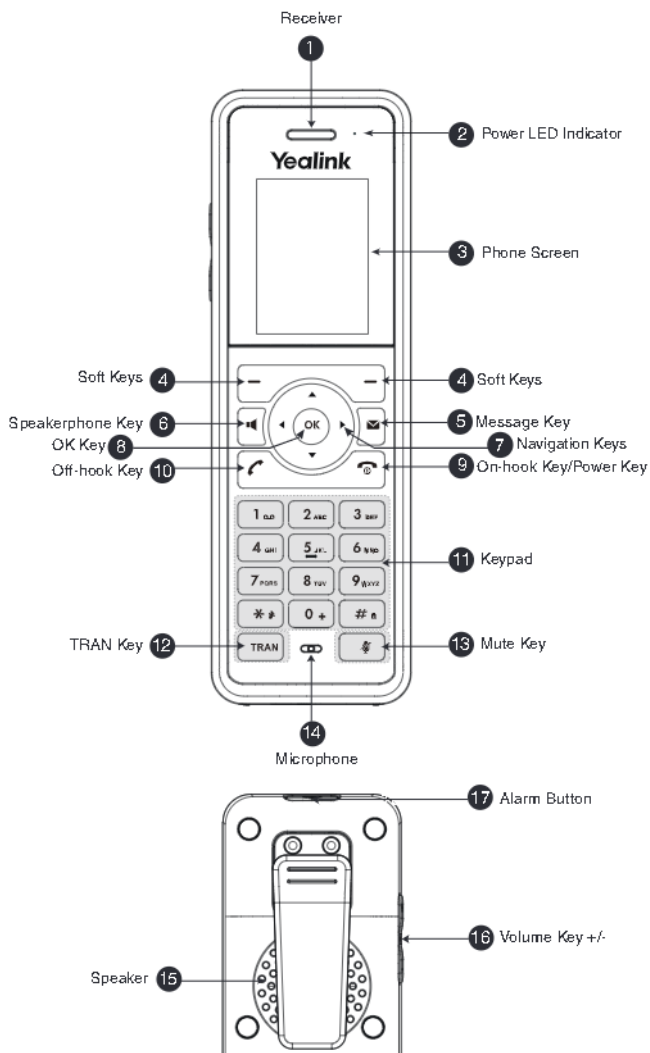
- Use Yealink-supplied power adapter (5V/0.6A). A third-party power adapter may damage the handset.
- Check the charging status on the top-right corner of the LCD screen.

### Technical Specifications

Item	Specification
Frequency band	1880-1900 MHz (Europe), 1920-1930 MHz (America), 1910-1920 MHz (Brazil)
Battery type	1460mAh Lithium-ion 3.7v 5.4WH
Talk time	28hours/24hours(with bluetooth)
Standby time	360 hours (15 days)/240 hours(with bluetooth)
Charging time	Less than 4 hours
Charger	DC 5V/0.6A Input
Power adapter	Input:100-240V~50/60Hz 0.2A Output:5V 0.6A 3.0W
Security	IEC 62133-2:2017

For more information, see the specific user guide or contact your system administrator.

# Hardware Component Instructions



## Regulatory Notices

### Operating Ambient Temperatures

- Operating temperature: +22 to 164°F (0 to 40°C)
- Relative humidity: 5% to 90%, no condensing
- Storage temperature: -22 to +160°F (-30 to +70°C)

### Warranty

Our product warranty is limited only to the unit itself, when used normally in accordance with the operating instructions and the system environment. We are not liable for damage or loss resulting from the use of this product or for any damage to any part. We are not liable for problems with Yealink device arising from the use of this product; we are not liable for financial damages, lost profits, claims from third parties, etc., arising from the use of this product.

### Explanation of the symbols

DC symbol

— is the DC voltage symbol.

⚠ Warning symbol

To avoid the potential effects on the environment and human health as a result of the presence of hazardous substances in electrical and electronic equipment, and use of electrical and electronic equipment it should understand the meaning of the crossed-out wheeled bins symbol. Do not dispose of WEEE in unsorted municipal waste and have to collect such WEEE separately.

### Restriction of Hazardous Substances Directive (RoHS)

This device complies with the requirements of the EU RoHS Directive. Statements of compliance can be obtained by contacting support@yealink.com.

### Safety Instructions

Save these instructions. Read these safety instructions before use!

#### General Requirements

- Before you install and use the device, read the safety instructions carefully and observe the situation in your operating area.
- During the process of storage, transportation, and operation, please always keep the device dry and clean, avoid collision and crash.
- Please attempt not to dismantle the device by yourself. In case of any discrepancy, please contact the appointed maintenance center for repair.
- Please refer to the relevant laws and statutes while using the device. Legal rights of others should be respected as well.

#### Environmental Requirements

- Place the device at a well-ventilated place. Do not expose the device under direct sunlight.
- Keep the device dry and free of dust.
- Do not place the device on or near any inflammable or fire-valuable object, such as rubber-made materials.
- Keep the device away from any heat source or bare fire, such as a candle or an electric heater.

#### Operating Requirements

- Do not let a child operate the device without guidance.
- Do not let a child play with the device or any accessory in case of accidental swallowing.
- Please use the accessories provided or authorized by the manufacturer only.
- The power supply of the device shall meet the requirements of the input voltage of the device. Please use the provided surge protection power socket only.
- Before plugging or unplugging any cable, make sure that your hands are completely dry.
- Do not spill liquid of any kind on the product or use the equipment near water, for example, near a bathtub, washbasin, kitchen sink, wet basement or near a swimming pool.
- During a thunderstorm, stop using the device and disconnect it from the power supply. Unplug the power plug and the Anyman Digital Subscriber Line (ADSL) twisted pair (the radio frequency cable) to avoid lightning strike.
- If the device is left unused for a rather long time, disconnect it from the power supply and unplug the power plug.
- When there is smoke emitted from the device, or some abnormal noise or smell, disconnect the device from the power supply, and unplug the power plug immediately.
- Contact the specified maintenance center for repair.
- Do not touch any object into equipment that is not part of the product or auxiliary product.
- Before connecting a cable, contact the grounding cable of the device first. Do not disconnect the grounding cable until you disconnect all other cables.

#### Battery Requirements

- Do not immerse the battery into water, which could short-circuit and damage the battery.
- Do not expose the battery to an open flame or leave the battery where it could be subjected to extremely high temperatures, which could cause the battery to explode.
- Do power the handset off before recharging the battery.
- Do not try to use the battery if it has power supply of any device other than this handset.
- Do not open or dismantle the battery. Released electrolyte is corrosive and may cause damage to your eyes or skin.
- Use only the rechargeable battery pack delivered with the handset or those rechargeable battery packs expressly recommended by Yealink.
- Defective or over-used battery should never be disposed of as municipal waste. Return old battery to the battery supplier, a licensed battery dealer or a designated collection facility.

#### Cleaning Requirements

- Before cleaning the device, disconnect it from the power supply.
- Use a piece of soft, dry and antistatic cloth to clean the device.
- Keep the power plug clean and dry.

#### Troubleshooting

The unit cannot supply power to Yealink device.

There is a bad connection with the plug.

1. Clean the plug with a dry cloth.
2. Connect it to another wall outlet.

The usage environment is out of operating temperature range.

The cable between the unit and the Yealink device is connected incorrectly.

1. Connect the cable correctly.
- You cannot connect the cable properly.

1. You may have connected a wrong Yealink device.

2. Use the correct power supply.

Some dust, etc., may be in the port.

1. Clean the port.

Contact your dealer or a authorized service facility for any further questions.

#### FCC Statement

This device complies with part 15 of the FCC Rules. Operation is subject to the following two conditions: (1) this device may not cause harmful interference, and (2) this device must accept any interference received, including interference that may cause undesired operation.

Any changes or modifications not expressly approved by the party responsible for compliance could void the user's authority to operate the equipment.

#### IC Statement

This device complies with Industry Canada license-exempt RSSs. Operation is subject to the following two conditions:

(1) this device may not cause interference; and

(2) this device must accept any interference, including interference that may cause undesired operation of the device. CAN ICESB-3(B)

Le présent appareil est conforme aux CNR d'Industrie Canada applicables aux appareils radio exempts de licence. L'exploitation est autorisée à deux conditions :

(1) l'appareil ne doit pas produire de brouillage;

(2) l'utilisateur de l'appareil doit accepter tout brouillage radioélectrique subi, même si le brouillage est susceptible d'en compromettre le fonctionnement. NMB3(B)

#### Radiation Exposure Statement

This equipment complies with FCC and IC radiation exposure limits set forth for an uncontrolled environment.

This equipment should be installed and operated with minimum distance 20cm between the radiator and your body.

Cet équipement ne doit pas être Co-placé ou fonctionner en même temps qu'un autre auxiliaire sans être isolé.

Cet équipement doit être installé et actionné avec une distance minimum de 20 centimètres entre le radiateur et votre corps.

#### Contact Information

YEALINK NETWORK TECHNOLOGY CO., LTD.

30B, 3rd Floor, No.16, Yun Ding North Road, Hui De Biao, Xiamen City, Fujian, P.R.C

YEALINK (EUROPE) NETWORK TECHNOLOGY B.V.

Stavelandslaan 3127, Annum Building, 3th floor, 1077ZZ, Amsterdam, The Netherlands

YEALINK (USA) NETWORK TECHNOLOGY CO., LTD.

999 Reaches Street Suite 2000, Fulton, Atlanta, GA, 30309, USA

Made in China.

## About Yealink

Yealink (Stock Code: 300628) is a global brand that specializes in video conferencing, voice communications and collaboration solutions with best-in-class quality, innovative technology and user-friendly experience. As one of the best providers in more than 140 countries and regions, Yealink ranks No.1 in the global market share of SIP phone shipments (Global IP Desktop Phone Growth Excellence Leadership Award Report, Frost & Sullivan, 2019).

## Technical Support

Visit Yealink Wiki (<http://support.yealink.com/>) for firmware downloads, product documents, FAQ, and more. For better service, we sincerely recommend you to use Yealink Ticketing system (<https://ticket.yealink.com/>) to submit all your technical issues.

## Need more help?



Yealink Documentation & Video



430104001587

YEALINK(XIAMEN) NETWORK TECHNOLOGY CO.,LTD.  
Web: [www.yealink.com](http://www.yealink.com)  
Copyright©2021 YEALINK(XIAMEN) NETWORK  
TECHNOLOGY CO.,LTD.All rights reserved.



