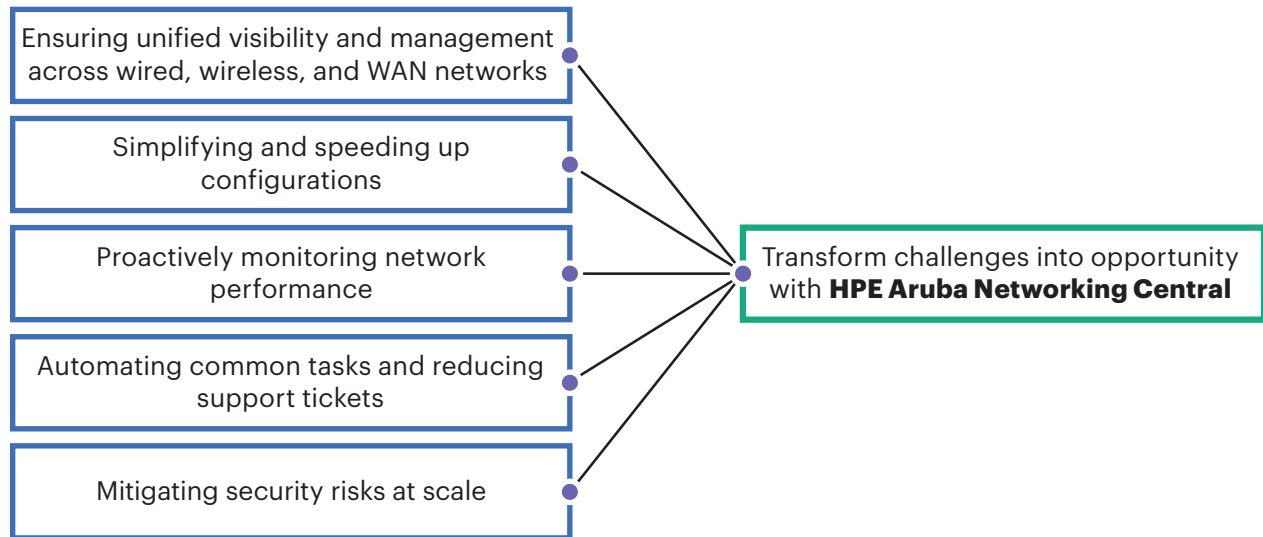


HPE ARUBA NETWORKING CENTRAL

AI for networking, cloud-scale management
designed for today and tomorrow

Connect, protect, and automate your networks at scale

Modern networks are the foundation for delivering exceptional digital experiences, but managing them presents challenges due to demands for new use cases, reliability, speed, security, and seamless connectivity. Network operators play a crucial role in managing the entire lifecycle of a network. To succeed, they need advanced tools and insights to meet business demands and ensure optimal network performance. However, they also encounter many challenges, such as:



HPE Aruba Networking Central delivers cloud-scale network management

Built on a microservices architecture powered by HPE GreenLake, [HPE Aruba Networking Central](#) delivers a unified management solution for network devices across campus, branch, remote, and data center locations. It simplifies operations and ensures secure, high performance networking and comprehensive analytics for devices, applications, and data catering to customers of all sizes.

As customers drive innovation through significant technology investments to boost growth and competitiveness, network connectivity use cases continue to multiply. To meet these evolving needs, HPE Aruba Networking Central has been enhanced with a modernized GUI, expanded AIOps toolsets, improved network device configuration and more — designed to maximize productivity and streamline operations. These new enhancements are available via a prominently displayed toggle switch.

Delivering results for customers

HPE Aruba Networking has a proven track record of delivering secure and reliable connectivity across diverse sectors. With over 8 years of AI-driven innovation and telemetry from millions of devices and billions of endpoints, our solution provides significant quantitative benefits and keeps customers at the forefront of technology. For more details, read the [Enterprise Strategy Group \(ESG\) white paper](#).

Toggle switch

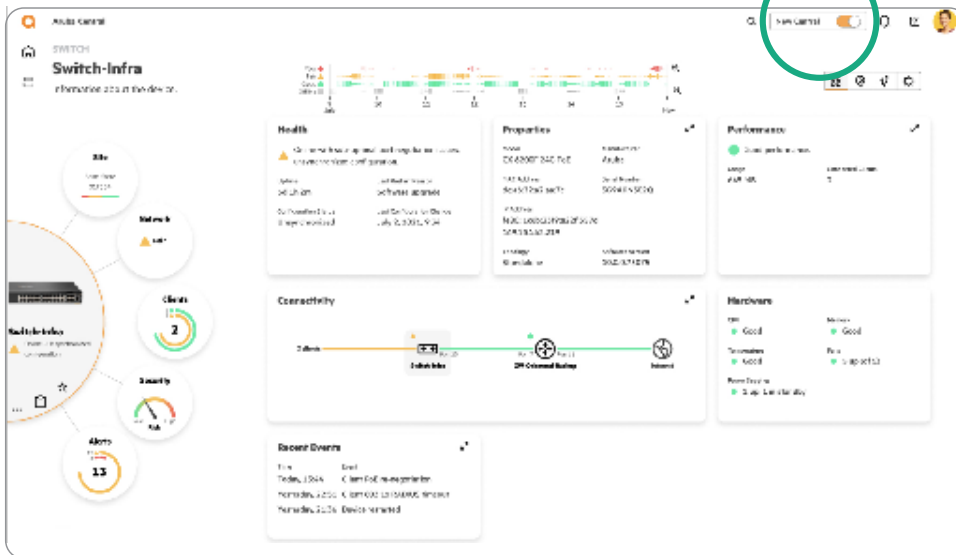


Figure 1. Intuitive graphical user interface

Lower cost of network administration



Lower total cost of ownership (TCO)



Figure 2. ESG economic validation of HPE Aruba Networking Central (November 2022)

Network management enhanced for an AI and IoT era

To keep pace with rapid AI and IoT advancements, HPE Aruba Networking Central includes enhancements in many areas such as:

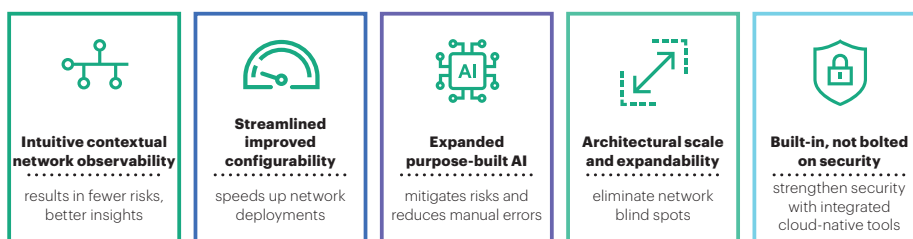


Figure 3. Core capabilities of HPE Aruba Networking Central

Intuitive contextual observability

HPE Aruba Networking Central delivers a holistic, connectivity experience with enhanced network visibility and monitoring across devices, clients, and applications. By leveraging actionable telemetry from our data lake, this solution facilitates intelligent automation and continuous optimization, ensuring unparalleled efficiency and insights in the industry. Features include:

- **NOC dashboard:** Consolidates data across network entities with dynamic panels (Health, Usage, Event, and Properties) for a holistic view.
- **Comprehensive solar system view:** Correlates rich, blended information across sites, network devices, clients, and applications, simplifying navigation and discovery.
- **Industry-first time travel:** Provides detailed “point in time” views with 1-minute granularity and up to 7 days of history, enhancing troubleshooting and avoiding manual analysis.
- **Sunburst topology:** Displays the hierarchical structure of the network, offering physical and logical connectivity views with rich context filters for troubleshooting and network configuration.
- **AI-driven assurance and alerts:** Delivers precise root cause analysis and actionable recommendations, enabling up to 80% faster response times.
- **Application visibility and security:** Monitors over 3,700 apps and integrates with BrightCloud for web content analysis. The consolidated application dashboard provides insights on top apps, websites, and security risks, enhancing troubleshooting and decision-making.

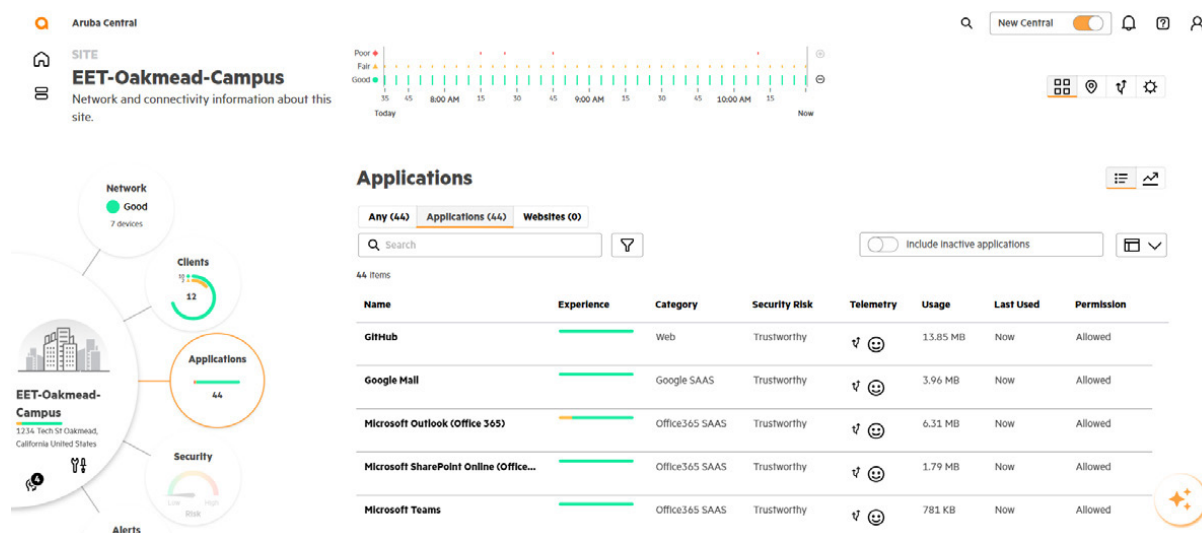


Figure 4. Application telemetry capabilities

Streamlined, improved configurability

Rapidly deploy network devices using new consolidated workflows to configure switches, gateways, and access points across multiple locations through a single configuration interface. Gone are the days of bespoke templates and configuration workflows that hamper scalability. For organizations that rely on DevOps automation, Central's APIs are device agnostic across multiple types, groups, and locations and have been revised for consistency of configuration in the following ways:

- **Hierarchical configuration:** Enables detailed, flexible, enterprise-grade setup at a global, site collection, site, device group, and device level. This reduces configuration time from minutes to seconds, allowing smaller teams to efficiently oversee global networks.
- **100% API support:** Offers consistent, device-agnostic APIs across multiple types and locations, providing enhanced programmability and seamless integration with HPE Aruba Networking and third-party platforms.
- **Device-agnostic workflows:** Automatically translate configurations into device-specific CLI commands across various devices, abstracting complexity and ensuring operational simplicity.

Architectural scale and expandability

Central's microservices-based architecture, deployed across AWS, Azure, and GCP™ public clusters with global points of presence (POPs), is designed to meet the scalability and uptime needs of the most demanding organizations, while ensuring General Data Protection Regulation (GDPR) compliance. This architecture not only supports extensive growth but also offers the modularity required to rapidly integrate industry-leading capabilities.

- **Third-party network monitoring:** In heterogeneous network environments, relying on multiple tools for monitoring can lead to manual errors, increased mean time to resolution (MTTR), and higher support costs. Our solution offers comprehensive visibility across diverse network environments, streamlining troubleshooting, improving IT agility, and eliminating performance blind spots through a single pane of glass.
- **Floor plan manager:** A redesigned [floorplan manager](#) helps optimize wireless coverage by enabling site, building, and floor configuration with detailed floor plans, adding support for self-locating HPE Aruba Networking AP configurations with embedded GPS and FTM. Other improvements include automated heat maps, wall configurations, presence analytics, streamlined network management, and new line of business actionable intelligence.
- **Digital experience monitoring integration:** DEM integration provides proactive synthetic tests and monitoring of network and application performance, improving user experience and SLA adherence for [HPE Aruba Networking UXI](#).
- **HPE Aruba Networking Central On-premises:** [Central on-premises](#) offers the same industry-leading functionality and intuitive interface for efficient network management as the cloud-based offering. It is tailored for organizations that require on-premises data handling due to confidentiality, security, and compliance concerns, providing cloud-like agility while meeting stringent regulatory standards.

Built-in, not bolted on security

Zero trust security principles can be effectively applied with HPE Aruba Networking Central through its expanded set of integrated cloud-native security tools. By converging multiple security functions into the network management system itself, Central eliminates the need for fragmented, bolted-on tools—reducing

operational overhead, integration complexity, and redundant investments.

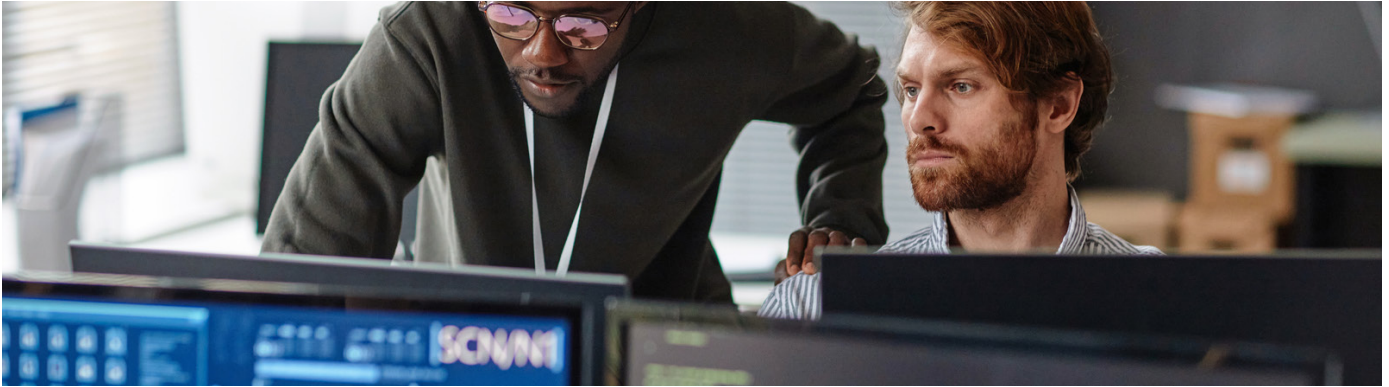
- **Client insights:** Continuous, AI-powered device discovery and profiling enable real-time visibility into every endpoint including IoT devices — whether managed, unmanaged. Reduce blind spots, identify anomalous behavior, and ensure only trusted devices access the network.
- **Cloud-native network admission control with Central NAC:** Create and enforce dynamic, policy-based access control based on user role, device type, and risk posture. Authenticate, authorize, and apply least-privileged access to minimize lateral movement and advanced threats.
- **Policy Manager:** Centralize policy orchestration across wired, wireless, and WAN environments. Simplify compliance, eliminate duplication, and ensure consistent secure experiences through a single interface.

Together, these components work natively within HPE Aruba Networking Central to strengthen and streamline security implementation and enforcement. The result is a unified security posture that scales with your network, reduces risk, and accelerates response—without the friction and added cost of managing disparate tools.

Customer-first support

HPE Aruba Networking devices (access points, switches, and gateways) that have an active HPE Aruba Networking Central SaaS subscription are fully supported and include:

- 24x7 priority technical support for troubleshooting, configuration, and administration.
- Software updates and upgrades for all HPE Aruba Networking hardware managed by Central is included with the subscription.
- Next business day exchange and 4-hour on-site service parts replacement options are also available for all managed hardware.
- Customers can easily migrate from HPE Aruba Networking AirWave to Central through our AirWave to Central Migration service, expediting their transition. This optional service enables rapid utilization of Central's capabilities to achieve business goals. For more information, please visit the [service description](#).



Maximize productivity with new HPE Aruba Networking Central

HPE Aruba Networking Central provides expanded AI, upgraded security, and unrivaled connectivity in a simple and intuitive way, meeting the scale and requirements of the most mission-critical environments. It empowers personnel across skill levels by:

- Reducing the learning curve needed for adoption
- Enabling faster root cause analysis for reduced MTTR
- Delivering operational efficiency and reduced downtime
- Improving security by reducing cyberthreats and minimizing risk
- Maintaining consistency across different network environments

Learn more at

[HPE Aruba Networking Central](#)

[HPE Aruba Networking Central Demo](#)

Visit [HPE.com](#)

[Chat now](#)

© Copyright 2025 Hewlett Packard Enterprise Development LP. The information contained herein is subject to change without notice. The only warranties Hewlett Packard Enterprise products and services are set forth in the express warranty statements accompanying such products and services. Nothing herein should be construed as constituting an additional warranty. Hewlett Packard Enterprise shall not be liable for technical or editorial errors or omissions contained herein.

GCP is a registered trademark of Google LLC. Azure is either a registered trademark or trademark of Microsoft Corporation in the United States and/or other countries. All third-party marks are property of their respective owners.

a00131337ENW, Rev. 2

HEWLETT PACKARD ENTERPRISE

[hpe.com](#)

