

GAINWARD

PRODUCT CERTIFICATION STATEMENTS

This device complies with Part 15 of the FCC Rules. Operation is subject to the following two conditions:

1. This device may not cause harmful interference.
2. This device must accept any interference received, including interference that may cause undesired operation.

FCC Notice: This equipment has been tested and found to comply with the limits for a Class B digital device, pursuant to Part 15 of the FCC Rules. These limits are designed to provide reasonable protection against harmful interference in a residential installation.

This equipment generates, uses, and can radiate radio frequency energy, and if not installed and used in accordance with manufacturer's instructions, may cause harmful interference to radio communications. However, there is no guarantee that interference will not occur in a particular installation.

If this equipment does cause interference to radio or television reception, which can be determined by turning the equipment off and on, the user is encouraged to try to correct the interference by one or more of the following measures:

- Reorient or relocate the receiving antenna.
- Increase the separation between the equipment and receiver.
- Plug the computer into a different outlet so that the two devices are on different branch circuits.
- If necessary, the user should consult the dealer or an experienced radio/television technician for additional suggestions.

Warning: Shielded interface cables must be used in order to comply with emission limits.

Changes or modifications not expressly approved by the party responsible for compliance could void the user's authority to operate the equipment.

CSA Notice: This digital apparatus does not exceed the Class B limits for radio noise emissions from digital apparatus set out in the Radio Interference Regulations of the Canadian Department of Communications.

CE Notice: This electronic device is designed for home and office use only, and it has been tested and certified to fully comply with CE standards set forth by the European Community.

COPYRIGHTS AND LIABILITIES

The information contained in this manual has been validated at the time of publication. The manufacturer reserves the right to make any changes and improvements to the products described in this manual at any time and without prior notice. Consequently, the manufacturer assumes no liability for damages incurred directly or indirectly from errors, omissions or discrepancies between the product and the manual.

All registered trademarks are the property of their respective owners.

Copyright © 2005 All rights reserved. No reproduction of this document in any form is permitted without the prior written authorization from the manufacturer.

TRADEMARK

All products and company names are trademarks or registered trademarks of their respective holders.



www.gainward.com



PHANTOM

ENGLISH

MANY THANKS FOR PURCHASING GAINWARD'S GRAPHICS CARD!

Please download the Graphics card driver after installing card in the personal computer. You can get the driver from two website here:

1. From Gainward's website (<http://www.gainward.com/download>)
2. From NVIDIA's website (<https://www.geforce.com/drivers>)

And, you can download the Utility (**Expertool**) for the Graphics card from Gainward website (<http://www.gainward.com/EXPERTool>) to optimize and monitor this Gainward Graphics card.

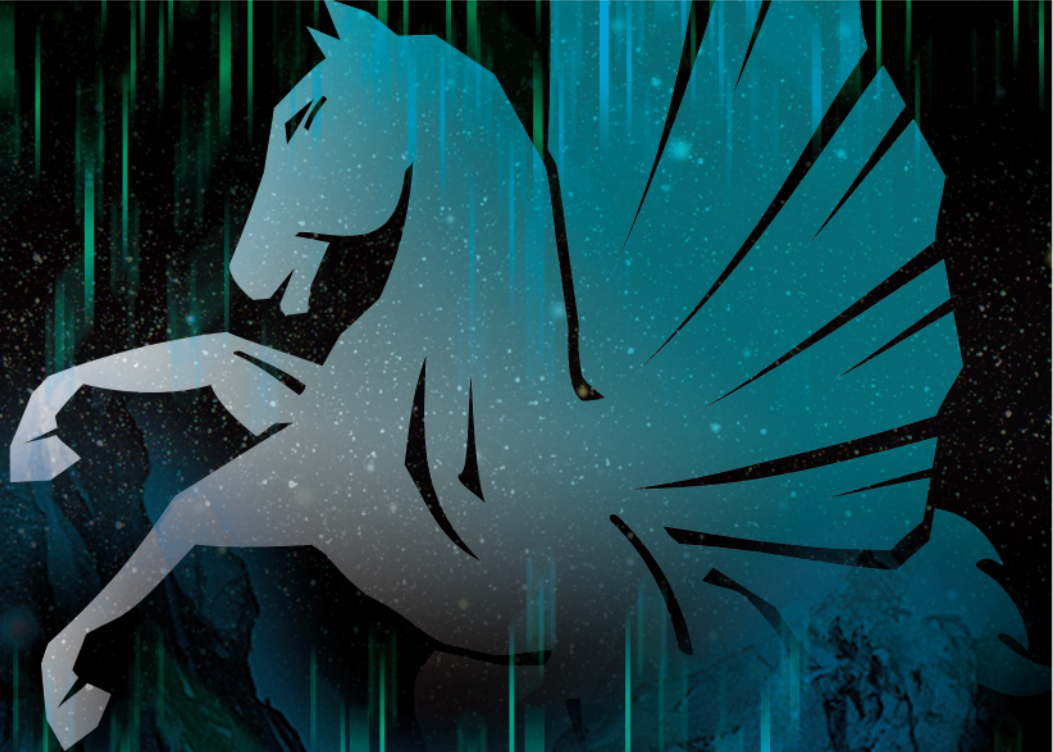
FRENCH

MERCI D'AVOIR ACHETÉ LA CARTE GRAPHIQUE GAINWARD !

Veuillez télécharger le pilote de la carte graphique après avoir installé la carte dans l'ordinateur. Le pilote est disponible depuis les deux sites Web suivants :

1. Depuis le site web de Gainward (<http://www.gainward.com/download>)
2. Depuis le site Web de NVIDIA (<https://www.geforce.com/drivers>)

Et, vous pouvez télécharger l'utilitaire (**Expertool**) pour la carte graphique Depuis le site web de Gainward (<http://www.gainward.com/EXPERTool>) pour optimiser et surveiller cette carte graphique Gainward.



PEGASUS

GERMAN

VIELEN DANK FÜR DEN KAUF DER GRAFIKKARTE VON GAINWARD!

Bitte laden Sie den Grafikkartentreiber herunter, nachdem Sie die Karte im PC installiert haben. Sie können den Treiber von zwei Webseiten erhalten:

1. Von der Webseite von Gainward (<http://www.gainward.com/download>)
2. Von der Webseite von NVIDIA (<https://www.geforce.com/drivers>)

Und Sie können das Dienstprogramm (**Expertool**) für die Grafikkarte von der Gainward Webseite (<http://www.gainward.com/EXPERTool>) herunterladen, um diese Gainward Grafikkarte zu optimieren und zu überwachen.

ITALIAN

GRAZIE PER AVER COMPRATO LA SCHEDA GRAFICA GAINWARD!

Scarica il driver per la scheda grafica dopo aver installato la scheda sul computer. Puoi scaricare il driver da due siti.

1. Dal sito di Gainward (<http://www.gainward.com/download>)
2. Dal sito di NVIDIA (<https://www.geforce.com/drivers>)

E puoi scaricare la Utility (**Expertool**) per la scheda grafica dal sito di Gainward (<http://www.gainward.com/EXPERTool>) per ottimizzare e controllare questa scheda grafica Gainward.

PHOENIX



JAPANESE

GAINWARD のグラフィックスカードをお買い上げいただきありがとうございます！

お使いのパソコンにカードを取り付けたら、グラフィックスカードのドライバーをダウンロードしてください。以下のウェブサイトのどちらからでもドライバーを入手できます。

1. Gainward のウェブサイト (<http://www.gainward.com/download>)
2. NVIDIA のウェブサイト (<https://www.geforce.com/drivers>)

また、Gainward のウェブサイト (<http://www.gainward.com/EXPERTool>) では、本 Gainward グラフィックスカードを最適化して監視するためのユーティリティ (**Expertool**) をダウンロードできます。

POLISH

DZIĘKUJEMY ZA ZAKUP KARTY GRAFICZNEJ GAINWARD!

Po zainstalowaniu karty w komputerze, pobierz sterownik karty graficznej. Sterownik można pobrać z następujących dwóch stron:

1. Ze strony internetowej Gainward (<http://www.gainward.com/download>)
2. Ze strony internetowej NVIDIA (<https://www.geforce.com/drivers>)

Można również pobrać narzędzie (**Expertool**) do karty graficznej ze strony internetowej Gainward (<http://www.gainward.com/EXPERTool>) aby zoptymalizować i monitorować tę kartę.



PORTUGUESE (Brazil)

AGRADECEMOS POR ADQUIRIR A PLACA GRÁFICA GAINWARD!

Faça o download do driver da placa gráfica após instalar a placa no computador pessoal. Você pode obter o driver em dois sites aqui:

1. No site da Gainward (<http://www.gainward.com/download>)
2. No site da NVIDIA (<https://www.geforce.com/drivers>)

Além disso, você pode fazer o download do Utilitário (**Expertool**) para a placa gráfica no site da Gainward (<http://www.gainward.com/EXPERTool>) para otimizar e monitorar esta placa gráfica da Gainward.

ROMANIAN

VĂ MULȚUMIM CĂ AȚI ACHIZIȚIONAT O PLACĂ VIDEO GAINWARD!

Descărcați driverul plăcii video după instalarea plăcii în computer. Puteți obține driverul de pe următoarele două site-uri:

1. De pe site-ul Gainward (<http://www.gainward.com/download>)
2. De pe site-ul NVIDIA (<https://www.geforce.com/drivers>)

Și puteți descărca utilitarul (**Expertool**) pentru placa video de pe site-ul Gainward (<http://www.gainward.com/EXPERTool>) pentru a optimiza și a monitoriza această placă video Gainward.

RUSSIAN

БОЛЬШОЕ СПАСИБО ЗА ПРИОБРЕТЕНИЕ ВИДЕОКАРТЫ GAINWARD!

После установки карты в персональный компьютер рекомендуется загрузить драйвер видеокарты. Драйвер можно скачать со следующих двух сайтов:

1. С сайта Gainward (<http://www.gainward.com/download>)
2. С сайта NVIDIA (<https://www.geforce.com/drivers>)

Кроме того, вы можете скачать утилиту (**Expertool**) для видеокарты с вебсайта Gainward (<http://www.gainward.com/EXPERTool>) для оптимизации и мониторинга работы вашей видеокарты Gainward.

SPANISH

¡MUCHAS GRACIAS POR COMPRAR LA TARJETA GRÁFICA DE GAINWARD!

Descargue el controlador de la tarjeta gráfica después de instalar la tarjeta en el ordenador. Puede obtener el controlador de los dos sitios web siguientes:

1. Desde el sitio web de Gainward (<http://www.gainward.com/download>)
2. Desde el sitio web de NVIDIA (<https://www.geforce.com/drivers>)

Y puede descargar la utilidad (**Expertool**) para la tarjeta gráfica desde el sitio web de Gainward (<http://www.gainward.com/EXPERTool>) para optimizar y monitorear esta tarjeta gráfica de Gainward.



GHOST

TURKISH

GAINWARD GRAFİK KARTINI SATIN ALDIĞINIZ İÇİN ÇOK TEŞEKKÜR EDERİZ!

Kartı kişisel bilgisayarınıza taktıktan sonra lütfen Grafik kartı sürücüsünü indirin. Sürücüyü bu iki siteden indirebilirsiniz:

1. Gainward internet sitesi (<http://www.gainward.com/download>)
2. NVIDIA internet sitesi (<https://www.geforce.com/drivers>)

Ve bu Gainward Grafik kartını optimize etmek ve izlemek için Gainward internet sitesinden (<http://www.gainward.com/EXPERTool>) Grafik kartı Yardımcı Yazılımını (**Expertool**) indirebilirsiniz.

INDONESIAN

TERIMAKASIH BANYAK ATAS PEMBELIAN KARTU GRAFIS GAINWARD!

Silakan unduh driver kartu Grafis setelah memasang kartu di PC. Anda bisa mendapatkan driver dari dua situs web di sini:

1. Dari situs web Gainward (<http://www.gainward.com/download>)
2. Dari situs web NVIDIA (<https://www.geforce.com/drivers>)

Dan, Anda dapat mengunduh Utility (**Expertool**) untuk kartu Grafis dari situs web Gainward (<http://www.gainward.com/EXPERTool>) untuk mengoptimalkan dan memonitor kartu Grafis Gainward ini.

GAINWARD의 그래픽 카드를 구매해 주셔서 감사합니다!

PC에 카드를 설치한 후 그래픽 카드 드라이버를 다운로드하십시오. 다음 두 웹사이트에서 드라이버를 다운로드 하실 수 있습니다.

1. Gainward의 웹사이트 (<http://www.gainward.com/download>)
2. NVIDIA의 웹사이트 (<https://www.geforce.com/drivers>)

그밖에도, Gainward 웹사이트 (<http://www.gainward.com/EXPERTool>) 에서 그래픽 카드용 유틸리티 (**Expertool**) 를 다운로드하여 Gainward 그래픽 카드를 최적화하고 모니터링할 수 있습니다.

GAINWARD

www.gainward.com

M-GW22