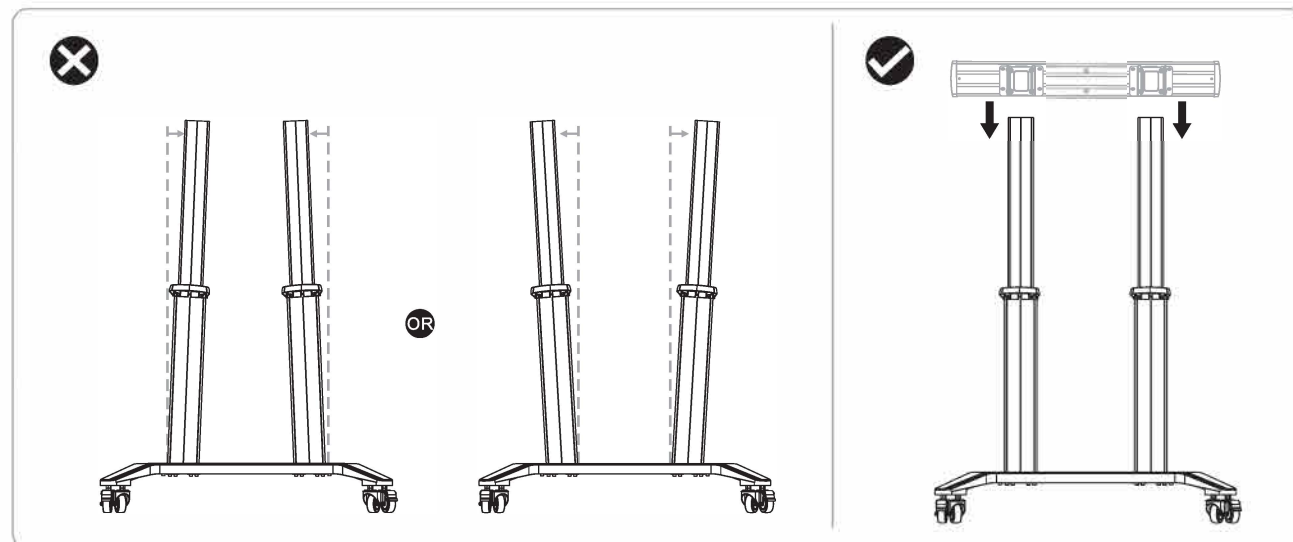
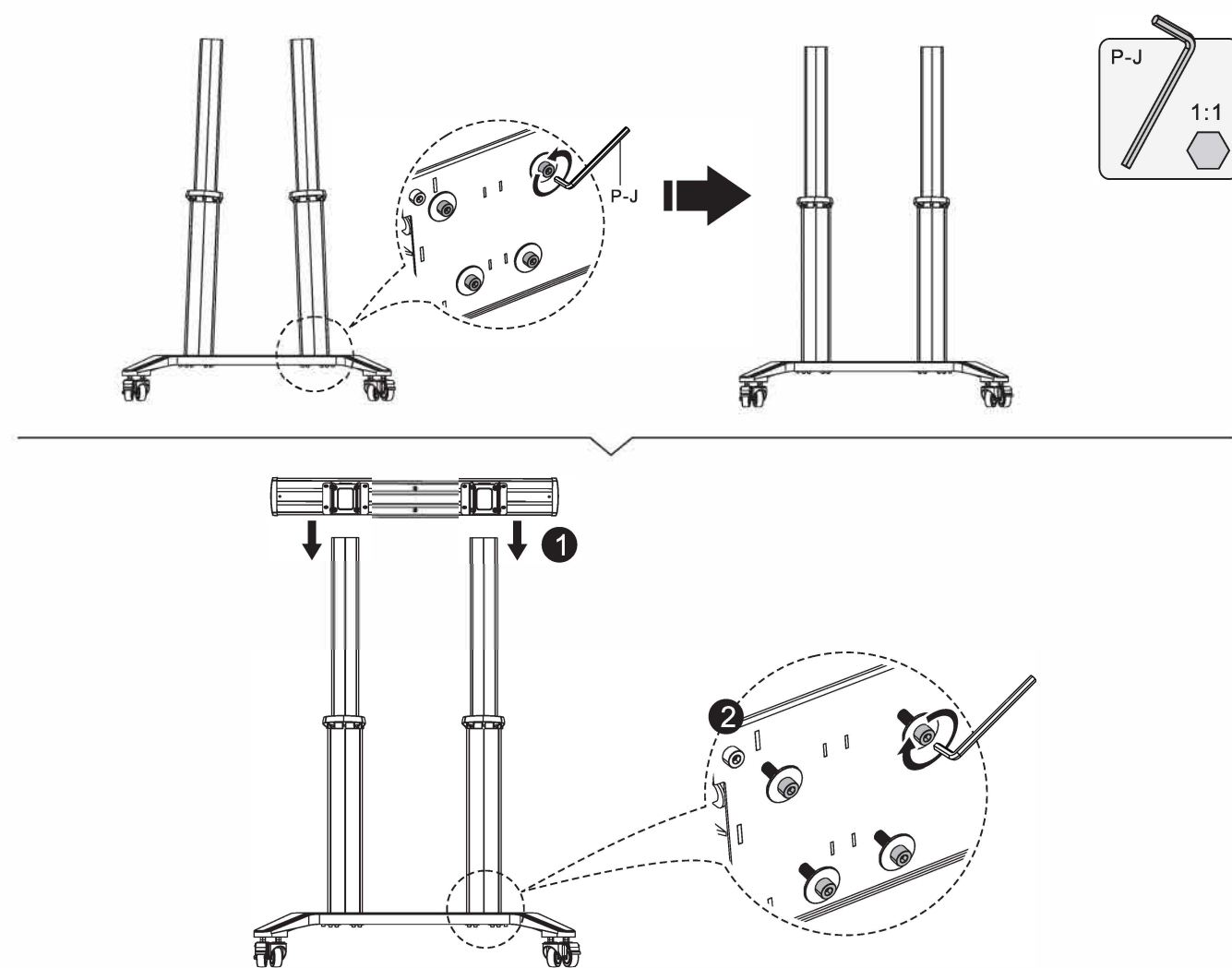


## TROUBLESHOOTING



If the columns are not properly aligned, the mounting plate may fail to attach to the columns. Follow the steps below to re-assemble the columns.

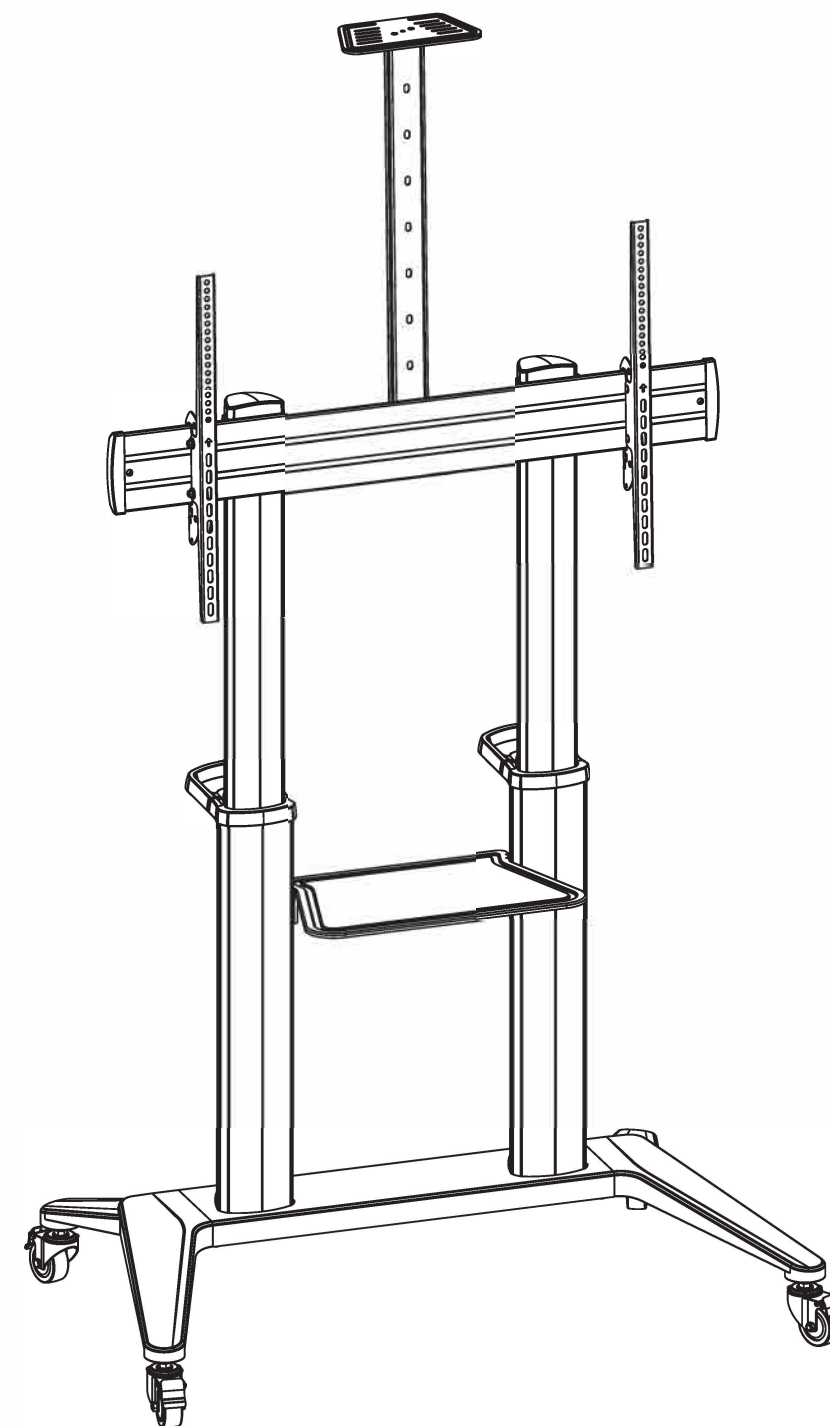


### Maintenance

- Check if the bracket is secure and safe to use at regular intervals(at least every three months).
- Please contact your distributor if you have any questions.

**VIVO LINK™**  
PROFESSIONAL AV SOLUTIONS

**TV Cart**



## INSTALLATION MANUAL

**VLFS70120**



200x200/300x200  
300x300/400x200  
400x300/400x400  
600x400/800x400  
800x600/1000x600



140kg/308lbs




5kg/11lbs



5kg/11lbs

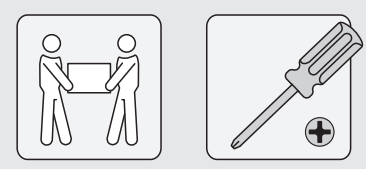


 Read the entire instruction manual before you start installation and assembly. If you have any questions regarding any of the instructions or warnings, please contact your local distributor for assistance.

# CAUTION

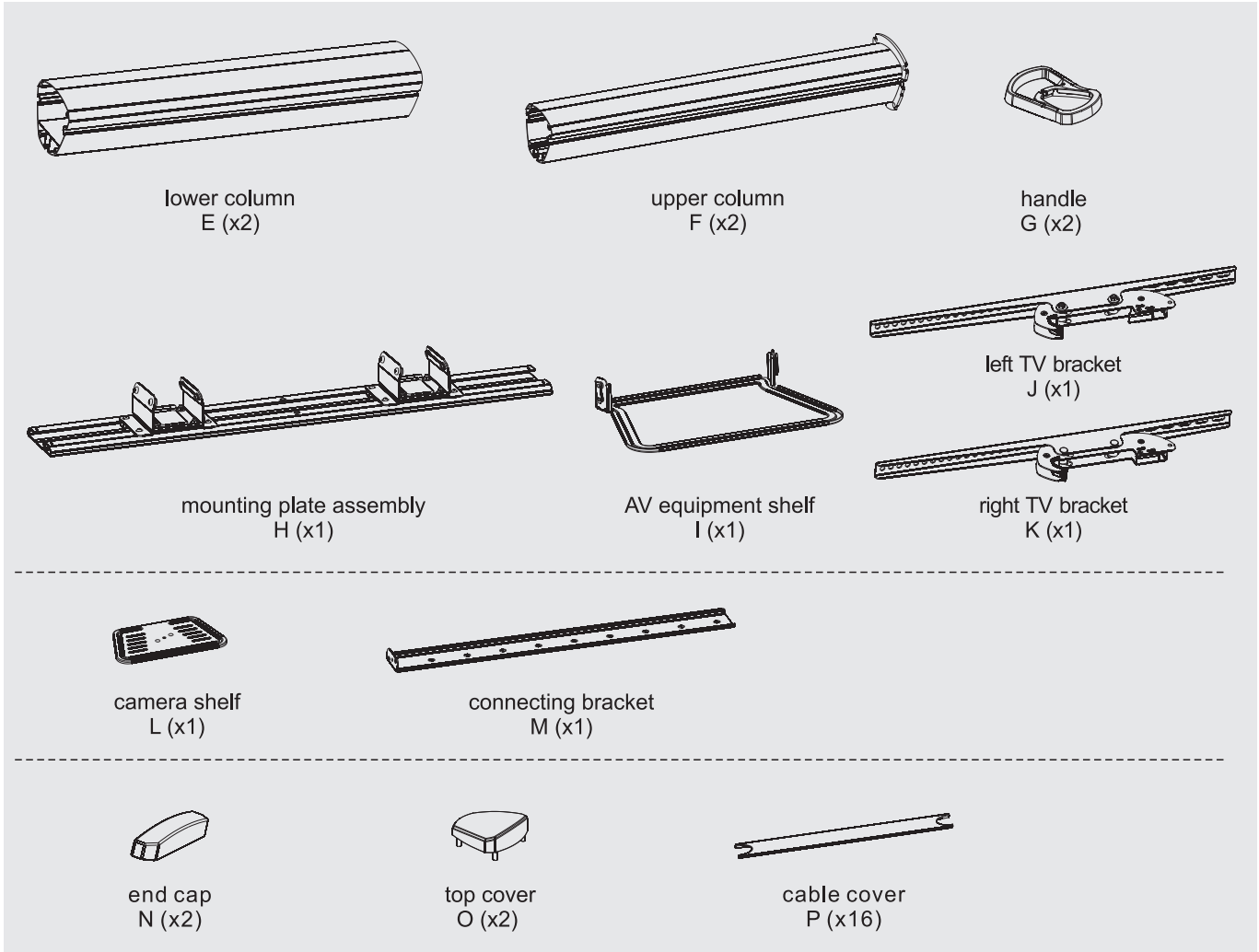
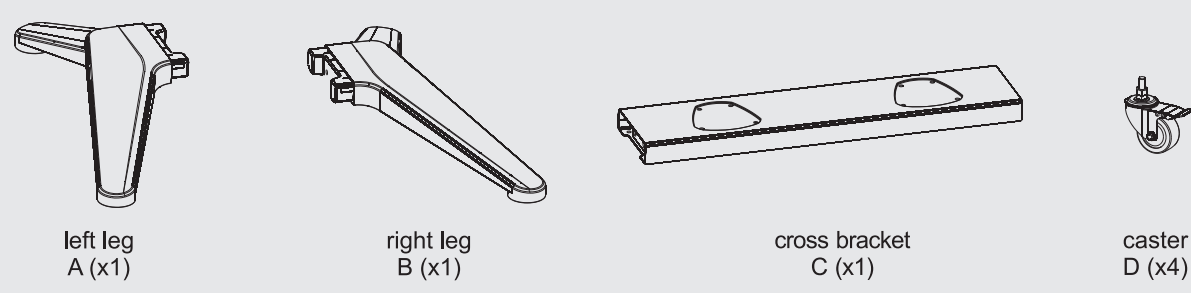
- Use with products heavier than the rated weights indicated may result in instability causing possible injury.
- Please closely follow the assembly instructions. Improper installation may result in damage or serious personal injury.
- Safety gear and proper tools must be used. This product should only be installed by professionals.
- Make sure that the supporting surface will safely support the combined weight of the equipment and all attached hardware and components.
- Use the mounting screws provided and DO NOT OVER TIGHTEN mounting screws.
- This product contains small items that could be a choking hazard if swallowed. Keep these items away from children.
- This product is intended for indoor use only. Using this product outdoors could lead to product failure and personal injury.

## Requirement for Installation

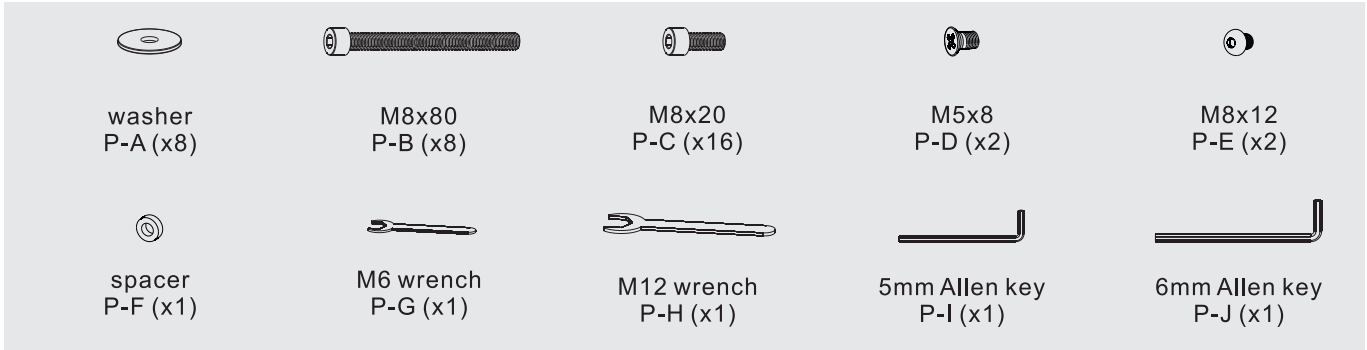


## Component Checklist

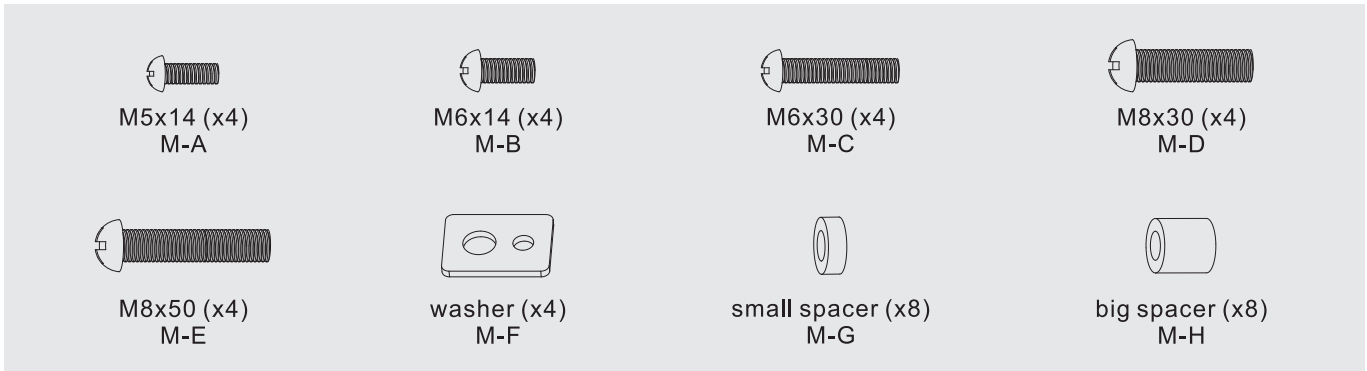
**IMPORTANT:** Ensure that you have received all parts according to the component checklist prior to installation. If any parts are missing or faulty, contact your place of purchase for a replacement.



## Package P

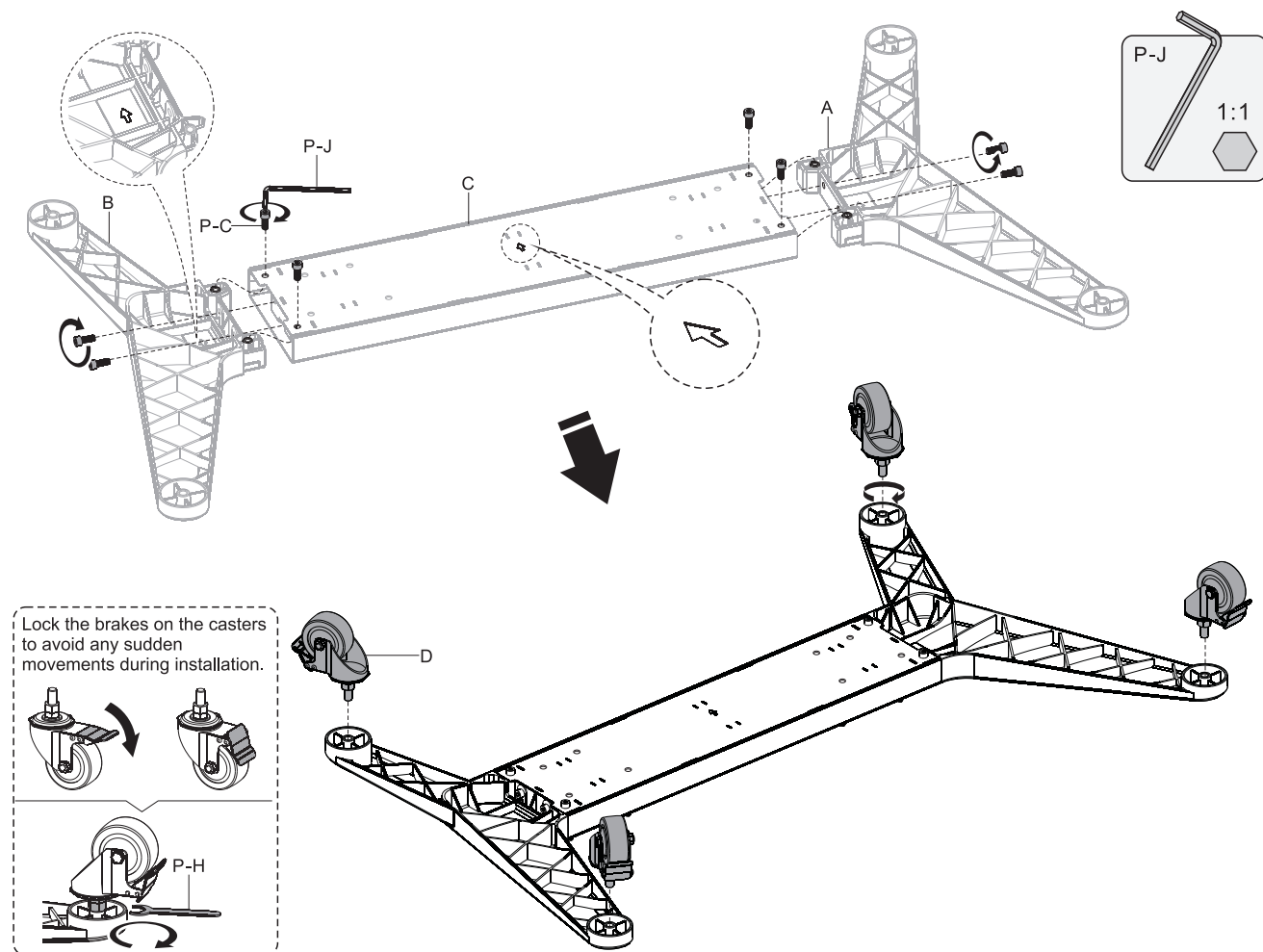


## Package M

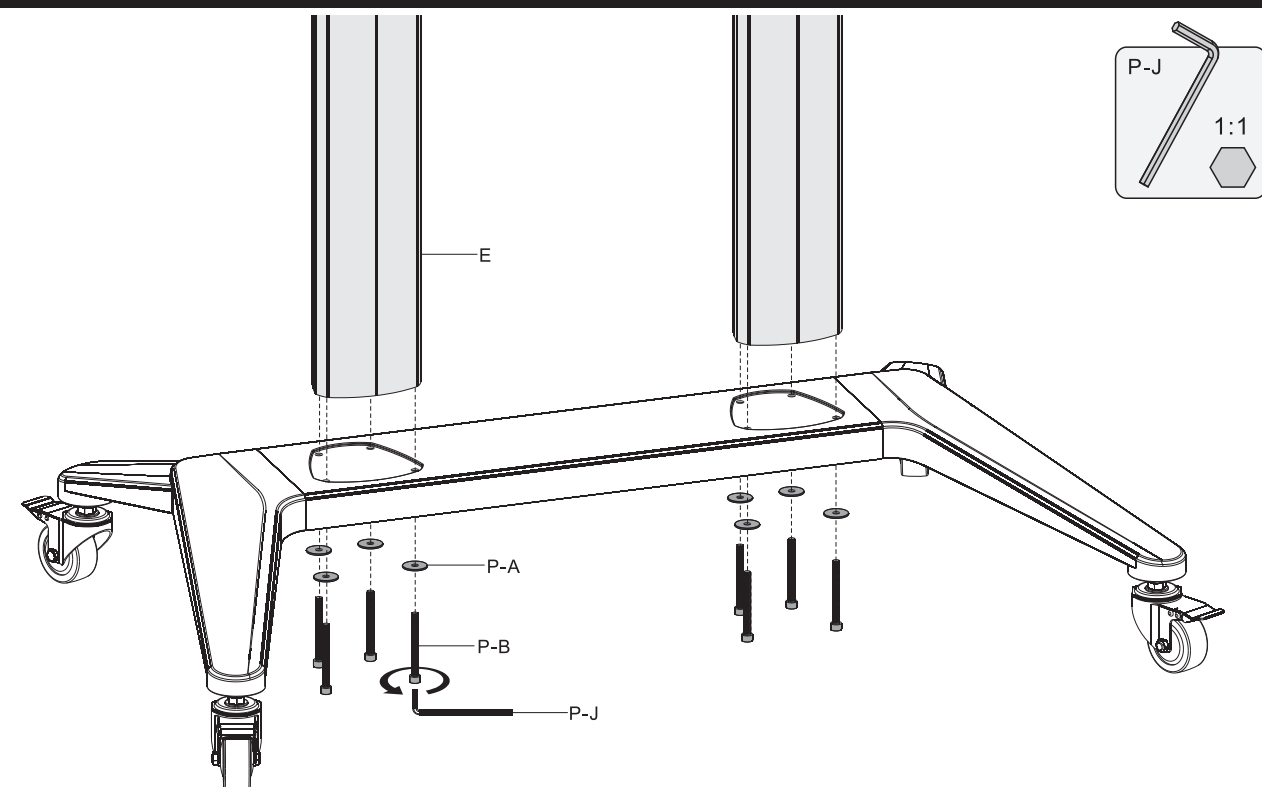




# 1. Assemble the Base

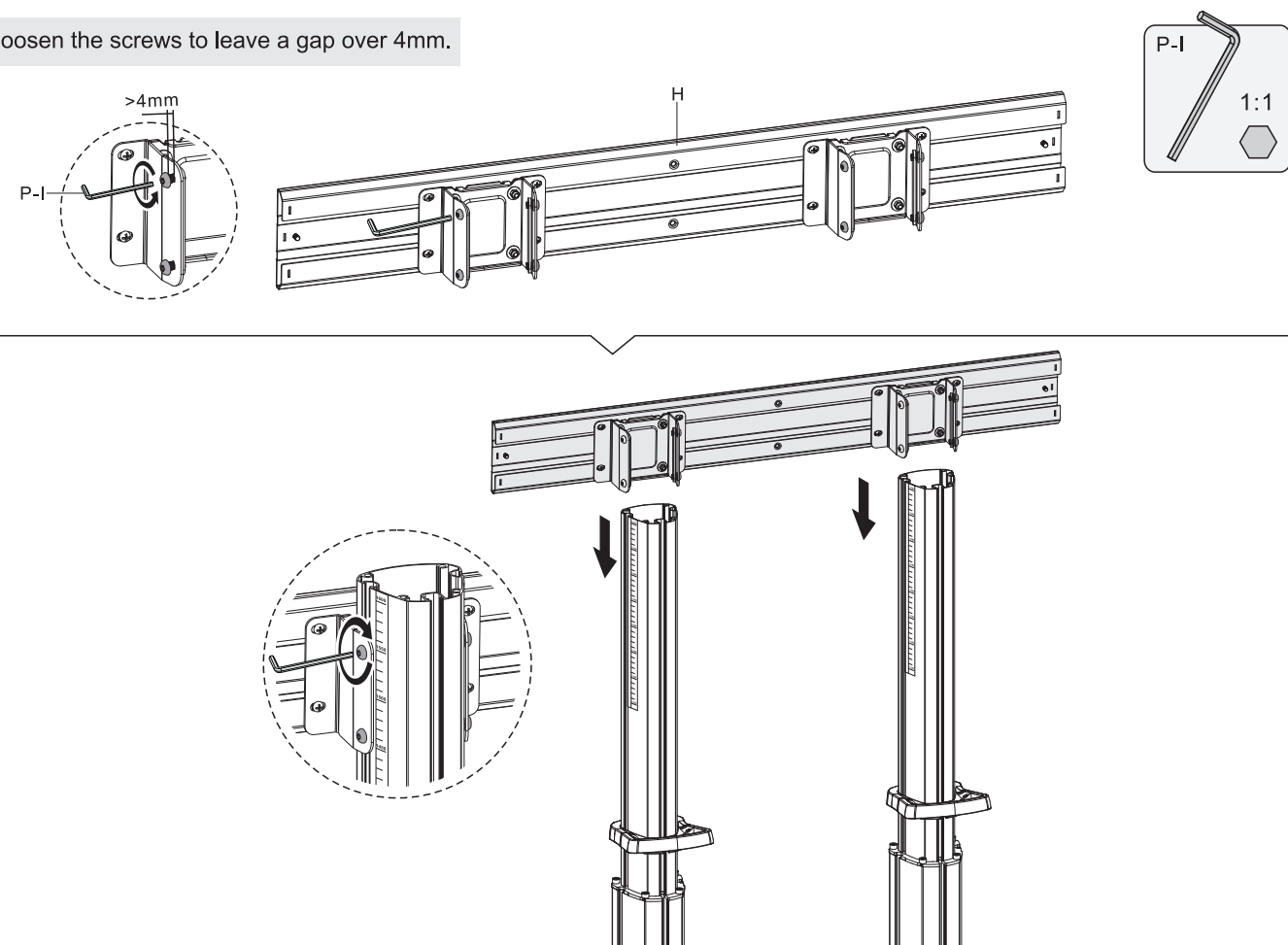


# 2. Assemble the Columns



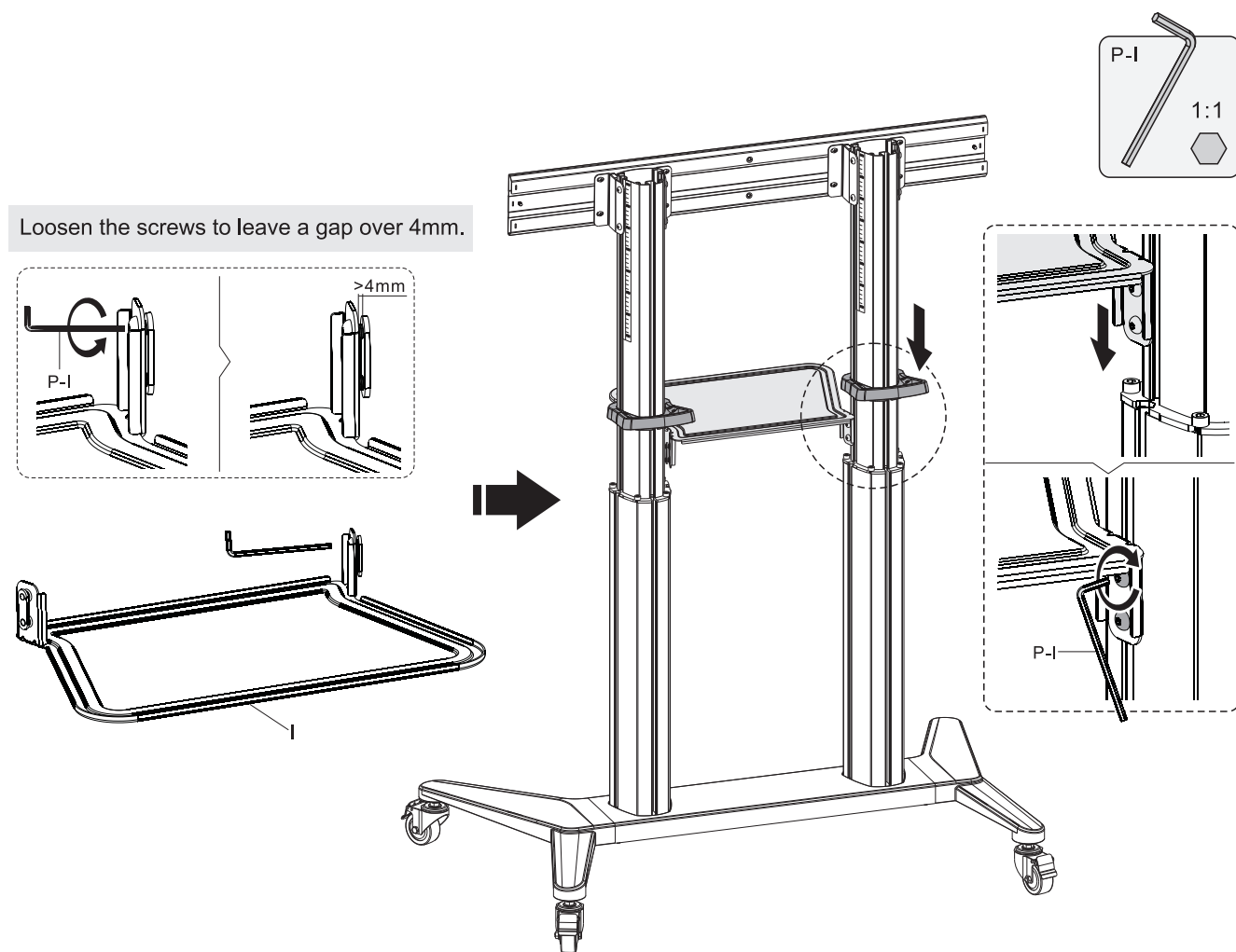
# 3. Attach the Mounting Plate to the Column

Loosen the screws to leave a gap over 4mm.

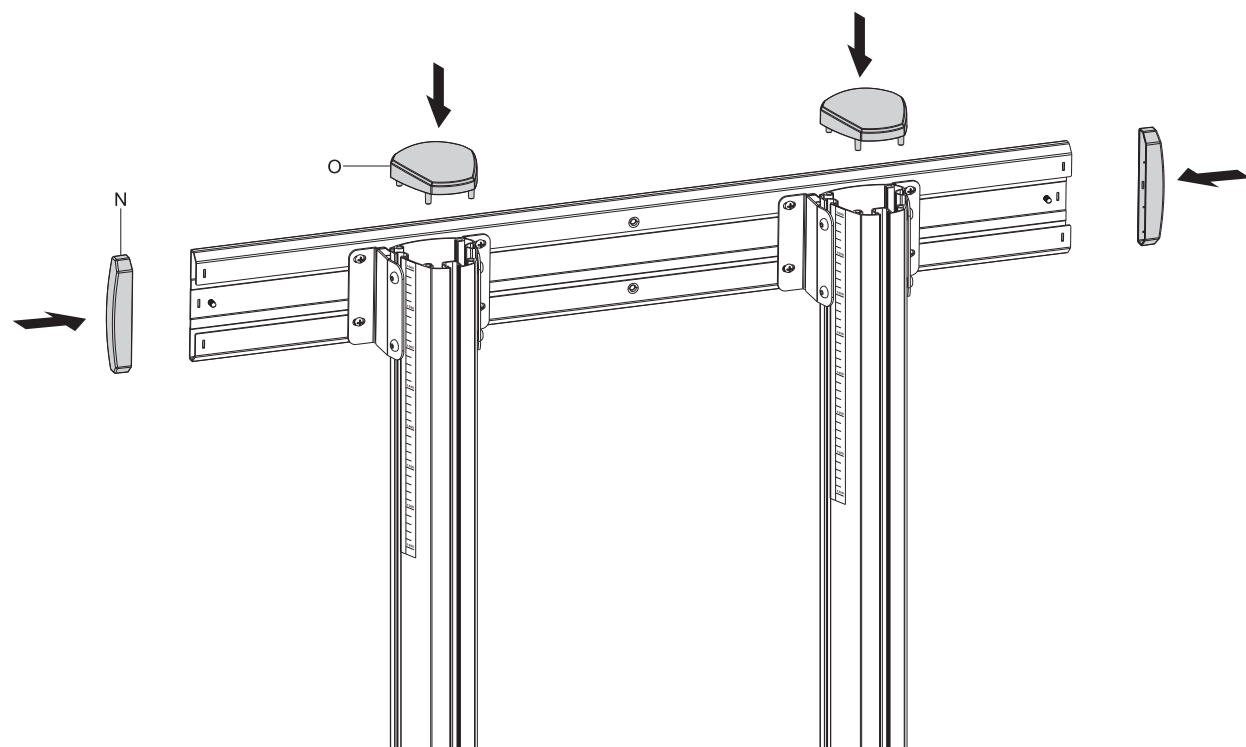




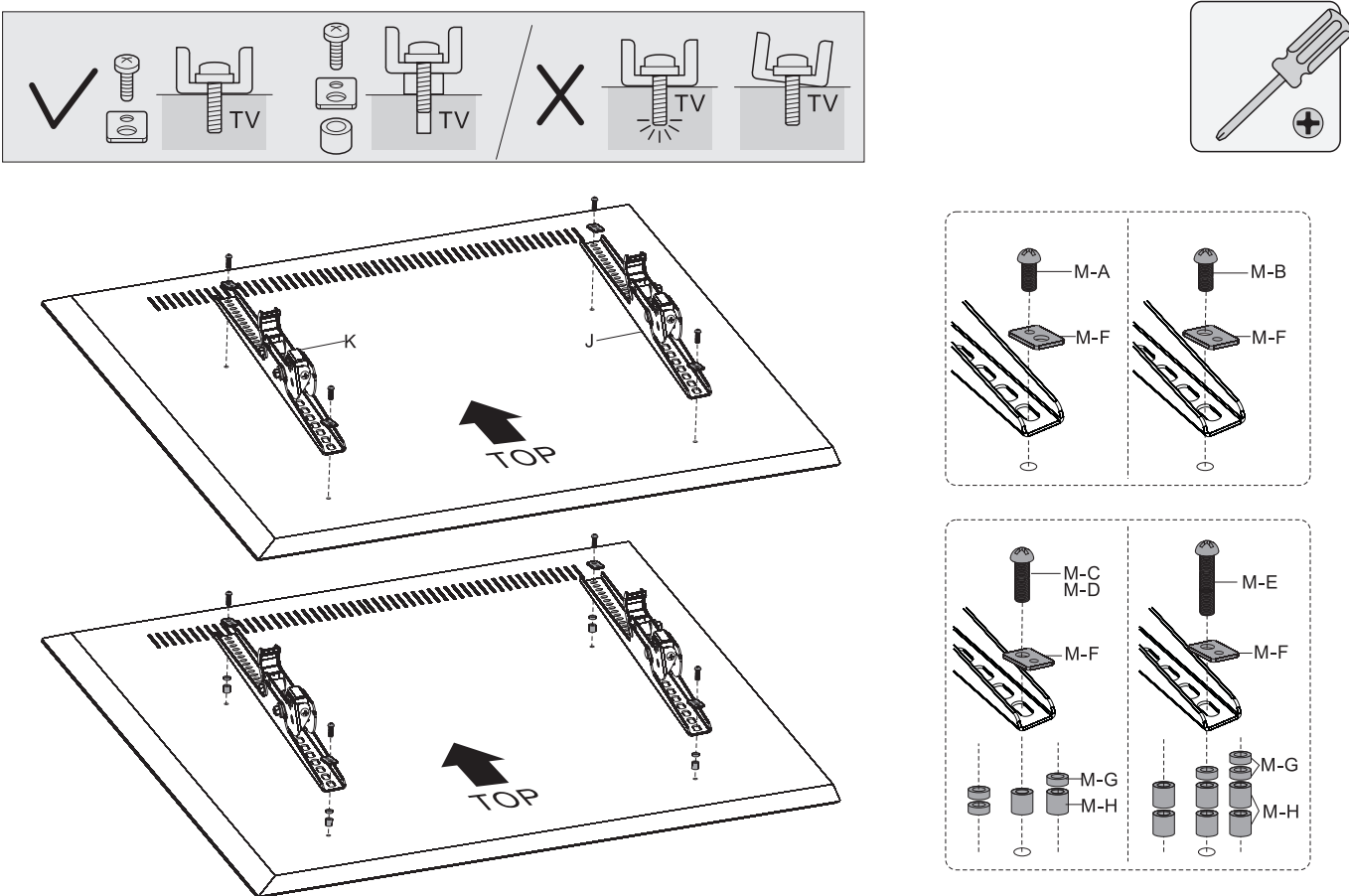
4. Assemble the AV Equipment Shelf



5. Assemble the Top Covers and End Caps



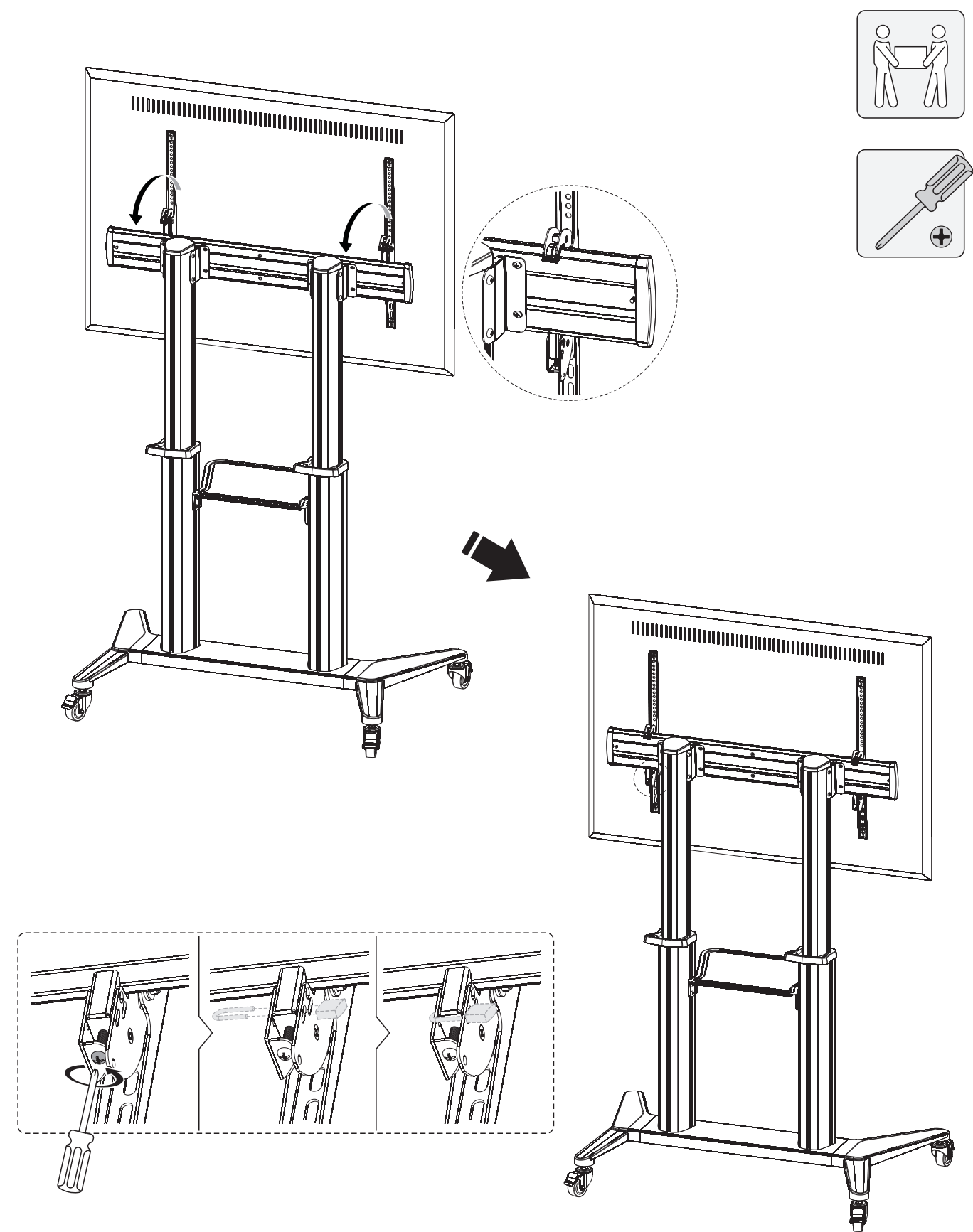
6. Attach TV Bracket to Flat Back Screen/Irregular Back Screen



M-A		
M-F		
M-D		
M-F		
M-H		



## 7. Hang and Secure the Screen



- Turn the bottom screw counterclockwise to tighten it.
  - Turn the bottom screw clockwise to loosen it.
  - Use a padlock to prevent the theft of display. (padlock is not included.)
- IMPORTANT:** Make sure the display is correctly mounted before releasing the display.

## 8. Assemble the Camera Shelf

