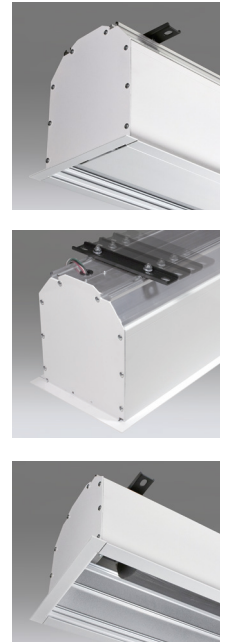


# ELECTRIC Ultimate Access XL E

FREE-HANGING, CEILING- RECESSED



- Ideal for major venues, conference centers, ballrooms, or university classrooms, the ceiling-recessed, free-hanging Ultimate Access XL E electric projection screen accommodates larger screen sizes. During use, a second motor opens the lower panel upward into the case allowing the screen to descend into the room. Retracted, the projection screen completely conceals behind a smooth, lower panel in the ceiling with no exposed screw heads or fasteners. Installation of the case during the initial phase of construction eliminates job site damage, allowing for installation of the screen at a later time.

THIS SCREEN IS FREE-HANGING  
Free-hanging, fiberglass-backed projection screen maintains flatness thanks to the weight of the screen and bottom dowel.

## FEATURES



- Black drop standard, depending on screen size. Extra drop above image area available upon request.
- Sliding brackets on top of the case allow for adjustments for mounting.
- Sliding brackets inside case accommodate different size screens.
- Fully automatic ceiling closure panel provides complete screen concealment. Can be finished by contractor to match ceiling.
- Independently motorized ceiling closure opens into the case.
- Includes a 110V three-position switch (standard).

- Low voltage, video interface or other controls can be built into housing for below ceiling access.
- White case standard, black available upon request.

## WARRANTY

[draperinc.com/warranty.aspx](http://draperinc.com/warranty.aspx)

## OPTIONS

- **Viewing surfaces:** OptiView™ and ClearSound™ families.
- Quiet, low voltage motors and 220V options are available.

## SUPPORTING DOCUMENTS

All instructions, technical drawings and other supporting documents are located at: [draperinc.com/documents.aspx](http://draperinc.com/documents.aspx)

## SIZES

- **Case dimensions** 14 1/16" high x 10 3/8" deep (36 cm x 26 cm), includes trim flange. Built-in controls may increase case length. Mounting brackets may add to case dimensions.
- **Maximum image width** up to 22' (671 cm) wide, depending on surface.
- 16:10 FORMAT: from 189" to 307" (480 cm to 780 cm) diagonal.
- 16:9 HDTV FORMAT: 184" to 300" (467 cm to 762 cm) diagonal.
- 4:3 NTSC/PAL FORMAT: 200" to 330" (508 cm to 838 cm) diagonal.
- AV FORMAT: from 12' x 14' to 16' 6" x 22' (366 cm x 427 cm to 503 cm x 671 cm) viewing area.
- Custom sizes available: For smaller sizes see the Ultimate Access E.

For more information on this product visit: [draperinc.com/projectionscreens/electricscreens.aspx](http://draperinc.com/projectionscreens/electricscreens.aspx)