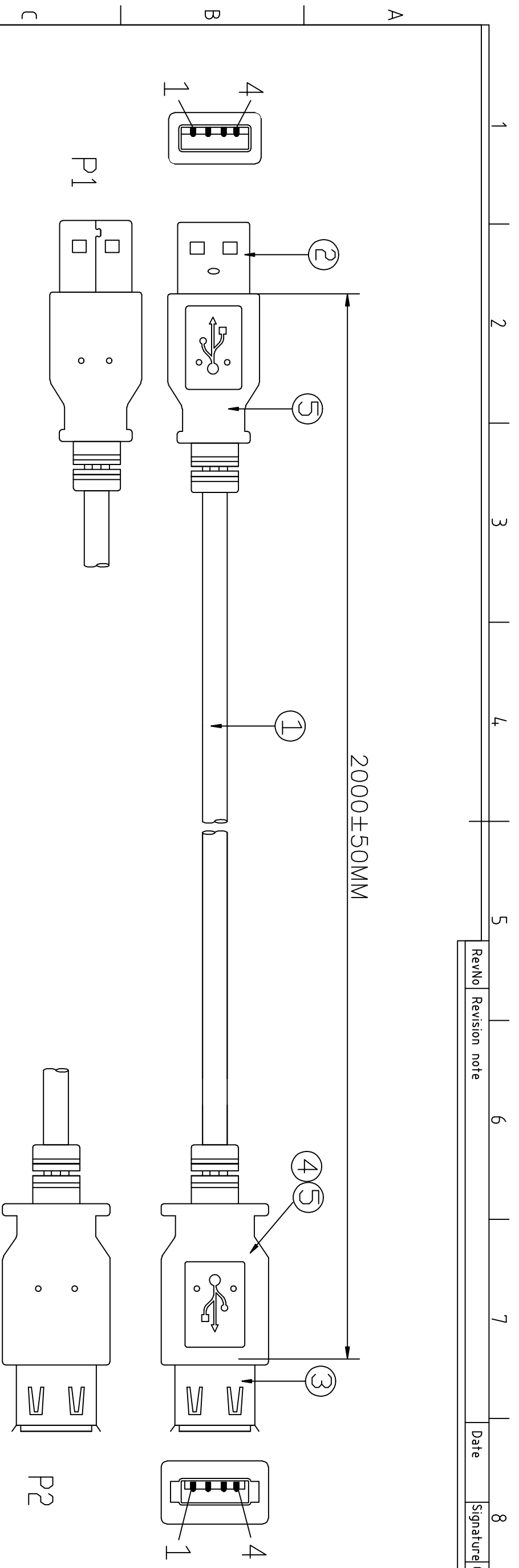
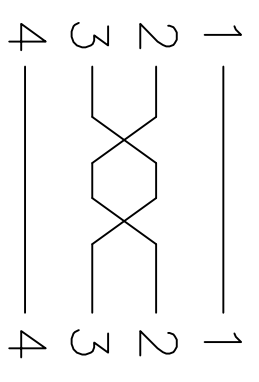


RevNo	Revision note	Date	Signature	Checked



PIN OUT



SHELL \_\_\_\_\_ SHELL

REQUIREMENTS:

- 1:100% short,open and miss wire test.
- 2:Insulation resistance:DC300V 10MΩ(Min)
- Conduction resistance 5Ω(Max)

⑤	OUTER MOLDED	BLACK 45P PVC	0.021	KG
④	INTER MOLDED	LDPE	0.008	KG
③	CONNECTOR	USB A TYPE FEMALE,WHITE INSULATOR,NICKEL PLATED SHELL,GOLD PLATED PIN	1	PCS
②	CONNECTOR	USB A TYPE MALE,WHITE INSULATOR,NICKEL PLATED SHELL,GOLD PLATED PIN	1	PCS
①	CABLE	USB2.0 1P*28#+2C*28#+AB OD:3.9±0.1 JACKET:BLACK PVC MARKING:AWM STYLE 2725 80t 30V VW-1 USB2.0 High Speed Cable-ROHS	2	M
NO.	MATERIAL	DESCRIPTIONG	QTY.	UNIT

Itemref	Quantity	Title/Name,designation,material,dimension etc	Article No./Reference
Designed by ACHY	Checked by HELEN	Approved by - date MARCH 6,2012	File name USB AM TO AF L-2M
Date MARCH 6,2012		Date MARCH 6,2012	Scale FREE

USB2000BK		Edition	Sheet
USB2000BK		1	1/1