

OSDOCK-MMUSBCA USB-C Multi Mount Docking Station

User's Manual



Table of Contents

SAFETY INSTRUCTIONS	1
COPYRIGHT	1
TRADEMARKS	1
REGULATORY COMPLIANCE	2
FCC CONDITIONS	2
CE	2
WEEE INFORMATION	2
INTRODUCTION	3
FEATURES	4
PACKAGE CONTENTS	5
SYSTEM REQUIREMENTS	5
PRODUCT OVERVIEW	6
CONNECTION	10
VERIFYING THE INSTALLATION	15
DISPLAY CONFIGURATION	18
AUDIO CONFIGURATION	27
SPECIFICATION	28

Before attempting to connect, operate or adjust this product, please save and read the User's Manual completely. The style of the product shown in this User's Manual may be different from the actual unit due to various models.

Safety Instructions

Always read the safety instructions carefully:

- ◆ Keep this User's Manual for future reference
- ◆ Keep this equipment away from humidity
- ◆ If any of the following situation arises, get the equipment checked by a service technician:
 - The equipment has been exposed to moisture.
 - The equipment has been dropped and damaged.
 - The equipment has obvious sign of breakage.
 - The equipment has not been working well or cannot get it to work according to the User's Manual.

Copyright

This document contains proprietary information protected by copyright. All right are reserved. No part of this manual may be reproduced by any mechanical, electronic or other means, in any form, without prior written permission of the manufacturer.

Trademarks

All trademarks and registered trademarks are the property of their respective owners or companies.

Regulatory Compliance

FCC Conditions

This equipment has been tested and found to comply with Part 15 Class B of the FCC Rules. Operation is subject to the following two conditions: (1) This device may not cause harmful interference. (2) This device must accept any interference received and include interference that may cause undesired operation.

CE

This equipment is in compliance with the requirements of the following regulations: EN 55 022: CLASS B

WEEE Information

For EU (European Union) member users: According to the WEEE (Waste electrical and electronic equipment) Directive, do not dispose of this product as household waste or commercial waste. Waste electrical and electronic equipment should be appropriately collected and recycled as required by practices established for your country. For information on recycling of this product, please contact your local authorities, your household waste disposal service or the shop where you purchased the product.



Introduction

The OSDOCK-MMUSBCA USB-C Multi Mount Docking Station offers the ultimate clutter-free work environment with its flexible mounting design, with the ability to be mounted to the back of a VESA mount display or desk. It provides 85W power charging to the host through USB-C and offers cross-platform support with Windows®, macOS® and Chrome®.

A flexible mounting design to create a clutter-free work environment. Extend your productivity capabilities via three USB 3.1 ports, with one port supporting BC1.2 & Apple charging 2.4A and dual video out (resolution up to dual 1080p@60Hz) to external monitors.

- *Incorporates **HDMI**® technology.*

Features

- ◆ Upstream Port
 - USB-C 3.1 x1 with PD3.0
 - Upstream PD powered, supports up to 85W
- ◆ Downstream Port
 - USB-A 3.1 Gen 1 x2 (5V/0.9A)
 - USB-A 3.1 Gen 1 x1 with BC 1.2 and Apple Charge 2.4A
- ◆ Video output
 - HDMI 1.4 x2 output supports resolution up to dual 1080p@60Hz
- ◆ Supports audio 2.1 channel
- ◆ Supports Gigabit Ethernet
- ◆ Multi mounting design

Package Contents

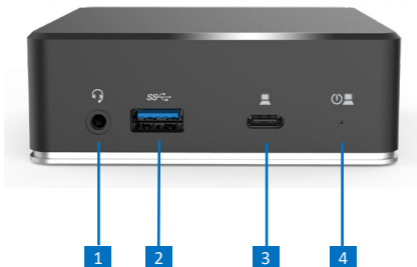
- ◆ USB-C Multi-Mount Dock
- ◆ USB-C Cable
- ◆ Power Adapter
- ◆ User's Manual

System Requirements

- ◆ Windows 10
- ◆ Mac OS

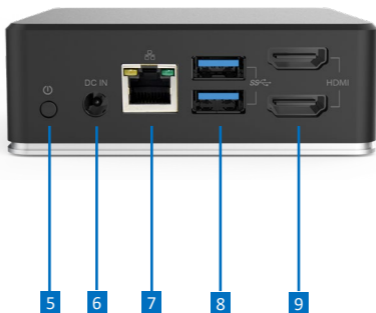
Product Overview

Front



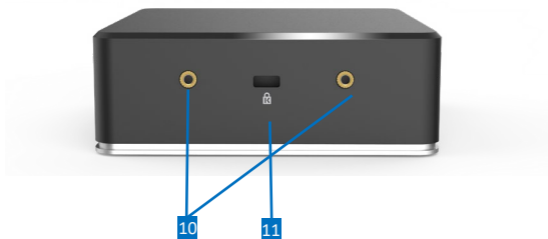
Item	Description
1. Combo Audio Jack	Connect to a headset
2. USB3.1 Type-A	Connect to USB-A devices (support BC1.2 & Apple charge)
3. USB3.1 Type-C	Connect to laptop (support PD3.0)
4. LED Indicator	LED shows blue when power on, green when active

Rear

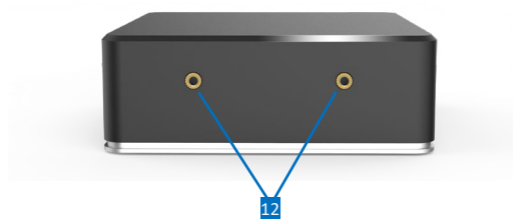


Item	Description
5. Power Button	Switch to power on/off
6. Power Jack	Connect to the power adapter
7. RJ45 Port	Connect to an Ethernet
8. USB 3.1 Type-A x2	Connect to USB devices
9. HDMI connector x2	Connect to HDMI ® monitor

Side-1

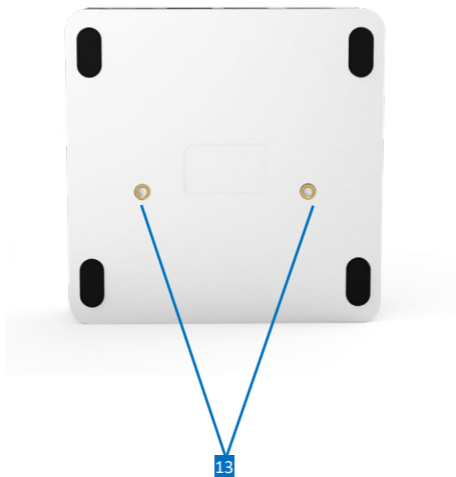


Side-2



Item	Description
10.Screw Holes	Screw holes for multi-mount
11.K-Lock	Secure your device
12. Screw Holes	Screw holes for multi-mount

Bottom



Item	Description
13.Screw Holes	Screw holes for multi-mount

Connection

To connect the USB peripherals, Ethernet, speaker and microphone, follow the illustrations below to connect the corresponding connectors.

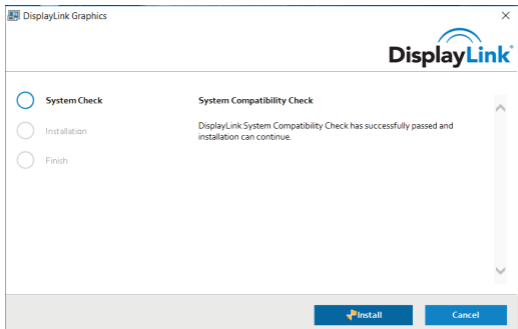


**Note:**

1. Please note the DisplayLink driver is required for this device under Windows®.
2. The following strings and screenshots may vary slightly from each operation system, and the driver version is subject to change without notice

Windows® 10

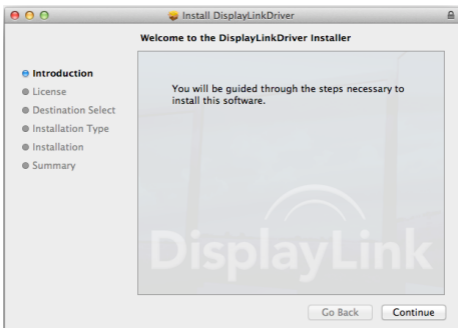
1. Click Install to execute the installation procedure.



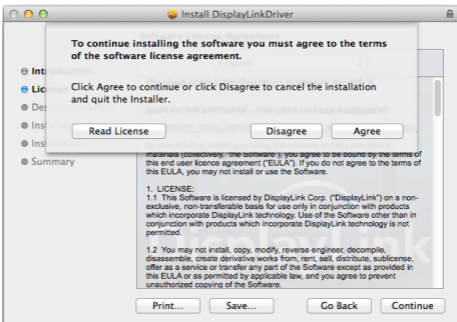
2. Be patient with the installation procedure.
3. Connect the Docking Station to a computer after the driver installation is completed.

Mac OS®

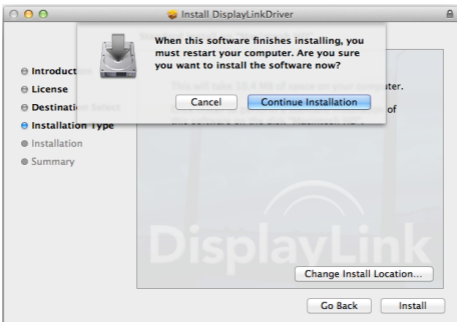
1. Locate and double-click the dmg file to start the installation, and click **Continue**.



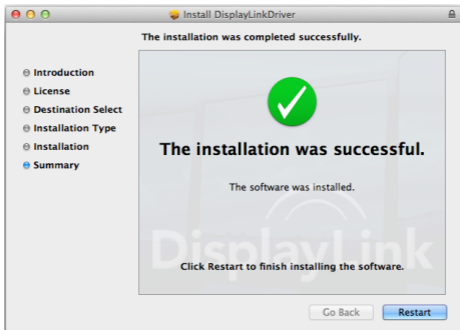
2. Click **Continue** > **Agree**.



3. Click **Install** > **Continue Installation**.



4. Please wait while the installation is in process.
5. Click **Restart** to complete the installation.



6. Connect the docking station to a computer after the driver installation is completed.

Verifying the installation

When the installation is completed, follow the steps below to verify if the device is properly installed.

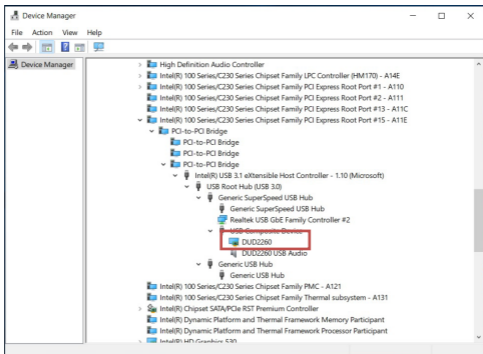
Windows® OS

1. Access **Device Manager**

Windows® 10

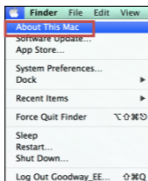
Settings > Devices > Connected Devices

2. In the Device Manager window, a device named **DUD2260** should be listed.



Mac OS®

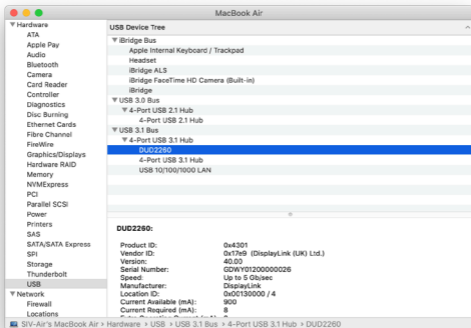
1. Access the **Hardware** list:
Click on the **Apple** sign at the top left corner of the screen.





2. Click **About This Mac**> **More Info...**> **System Report...**



3. In the System Report window, a device named **DUD2260** should be listed.




NOTE: Concerning for Windows® OS, if there is a  (question) or  (exclamation) mark next to the item, the device is not properly installed. Please delete the item, unplug the device and repeat the installation steps.

Display configuration

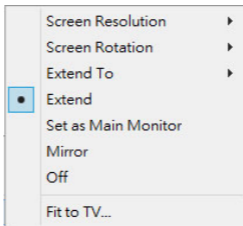
Utility settings

The supplied utility allows configuring the display mode, screen rotation, screen resolution, and physical arrangement of your monitors.

1. Click utility icon  in **Windows System Tray**.

NOTE: If you cannot find the icon  in **Windows System Tray**, click arrow icon to bring up icon list to find it.

2. Select a preferred option, and then click it using mouse.



Description of the settings

Options	Description
Displaylink manager	Enable the Windows screen resolution page
Check for updates	Check the latest driver and download if available
Display Setting Submenu	
Screen Resolution	Click to select an available resolution. Note that this function is invalid in mirror mode, as the resolution is defined as the resolution of the primary monitor
Screen Rotation	Rotate the screen according to the desired orientation
Extend	Extend the screen according to the desired orientation
Extend to	The cursor can extend to desired screen via left/right/above/below way moving
Set as Main Monitor	Set this screen to the main screen
Notebook Monitor Off	Switch the add-on monitor to the main display and turn off the screen of the laptop. NOTE: This function works only when one add-on monitor is connected. This option will also only appear on

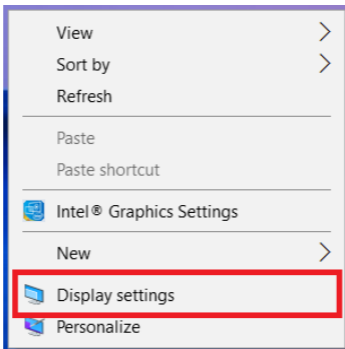
	laptop.
Mirror	Duplicate the primary monitor to the monitor which connects with the docking station
Off	Turn off the monitor
Optimize for video	Optimize the video quality when playing back. Text may appear less clear when enabling
Fit to TV	Adjust the size of Windows Desktop on the TV NOTE: This function works only when one add-on monitor is connected. Besides, this option will also only work in extended mode. The add-on monitor will change to the extended mode if selecting this option while in mirror mode.
Audio Setup	Enable the Windows audio configuration page. This function works only in specific models.
Video Setup	Enable the Windows screen resolution page.


Multi-monitor configuration

Extra DisplayPort and **HDMI**® monitors can be connected through the Docking Station if one monitor is already connected to the PC directly. Once the extra monitors are connected, it can be configured to use either “mirror mode”, “extended mode” or set to be the primary display.

Windows®-10

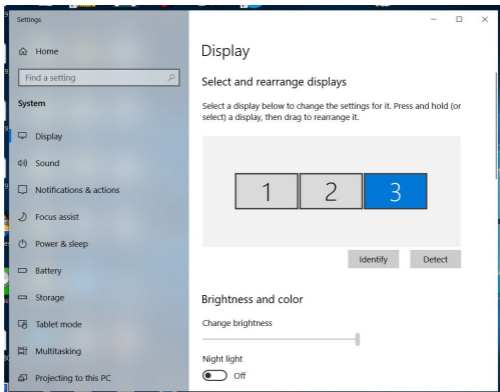
In desktop mode, right-click the desktop and select **Display Settings**.



Alternatively, click utility icon  in the **Windows System Tray**, and then select **DisplayLink Manager** or **Video Setup**.

Extended mode

1. Refer to the **Multi-monitor configuration** section to open the configuration page.
2. Select the preferred monitor at the top of the page.



3. Check the **Multiple Displays > Extend these displays**.
4. Click **Apply** to confirm and close the settings screen.
5. Once the setting is completed, simply drag and drop the application icons or the opened windows to the add-on monitor. However, some applications may not support to display on the extended desktop.

Trouble Shooting

a. Cursor disappeared

If the status remains in the extended mode but the docking station is disconnected, the desktop will still be panned to the add-on monitor. The cursor may not be found on the primary monitor in such a case. If it happens, connect the add-on monitor through the docking station again or keep moving the mouse.

b. Video playback in extended mode

If the video or DVD playback quality is poor or low performance in extended mode, please playback it on the primary monitor instead of the add-on monitor.

Mirror mode

1. Refer to the **Multi-monitor configuration** section to open the configuration page.
2. Select the preferred monitor at the top of the page.
3. Check the **Multiple Displays > Duplicate these displays**.
4. Click **Apply** to confirm and close the settings screen.

Set the Primary Monitor

1. Refer to the **Multi- Monitor Configuration** section to bring up the configuration window.
2. Select the preferred monitor at the top of the page.
3. Check the box of **Make this my main display**.



Note: For some computers, you may need to disable the main display by unchecking the box of **Extend the desktop onto this monitor** or **Extend my Windows desktop onto this monitor**.

4. Click **Apply** to confirm and exit.

Mac OS®

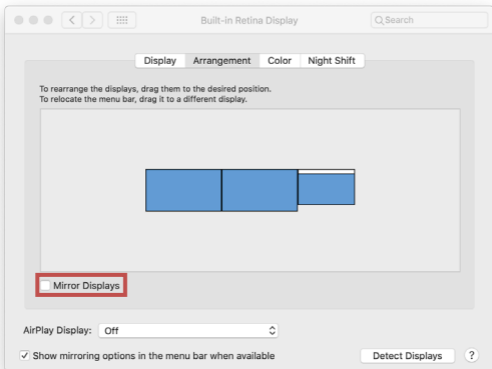
1. Click on the **Apple** sign at the top left corner of the screen and select **System Preferences.../**

Displays.

2. To rearrange the displays, drag them to the desired position.

To relocate the menu bar, drag it to a different display.

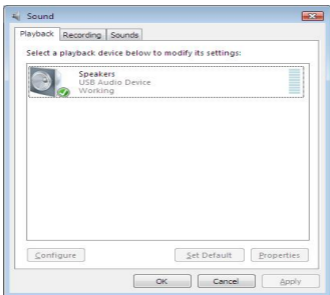
To switch to **Mirror Mode**, tick the box in front of **Mirror Displays**.



Audio configuration

By default, when the docking station is connected to a computer, the audio configuration may be changed to **USB (Multimedia) Audio Device** automatically (this setting depends on models). If it does not work, follow the steps below to setup.

1. Open **Control Panel** and then select the hardware and sound icon.
2. Click **Sound > Manage audio devices** and then select **USB Audio Device**.



Specification

User Interface	Upstream	USB-C female connector
	Downstream	HDMI 1.4 x2
		USB 3.1 Gen1 Type-A x3 with one port supports BC 1.2 & Apple charge
		RJ45 connector x1
		Combo Audio Jack (IN/OUT) x1
Video	Resolution	Single display, either one – HDMI [®] : 2560x1440 @ 50Hz
		Dual display – 1920x1080@60Hz
Audio	Channel	2.1 CH
Ethernet	Type	10/100/1000 BASE-T
	Power Adapter	Input: AC 100-240V
		Output: DC 20V/5A
Working Environment	Operation Temperature	0~40 degree
	Storage Temperature	-20~70 degree
Compliance		CE, FCC



OSDOCK-MMUSBCA
USB-C Multi Mount Docking Station
User's Manual



V1.0