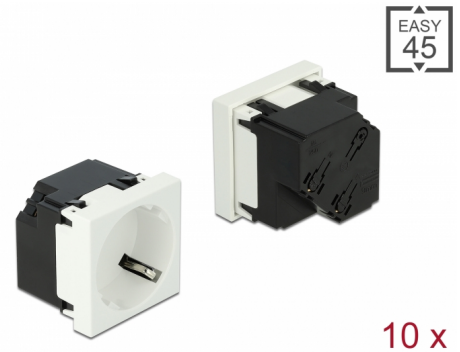


Delock Easy 45 Grounded Power Socket with a 45° arrangement 45 x 45 mm 10 pieces

Description

This power socket by Delock is designed to provide a CEE 7/3 power connection. The simple snap-in mechanism ensures that the module is firmly in place and can be easily removed if necessary.



Item no. 81321

EAN: 4043619813216

Country of origin: China

Package: Box

Technical details

- Connectors:
 - 1 x socket CEE 7/3
 - 3 x screwless terminal for PE, N, L
- Rated current: 16 A / 250 V~
- Rated power: 4000 W
- Sockets in a 45° arrangement
- Material: ABS / PC plastic
- Suitable for module holder Delock Easy 45
- Suitable for 45 mm cable duct with minimum depth 45 mm
- Module size: 45 x 45 mm
- Dimensions (LxWxH): ca. 45 x 45 x 39 mm
- Colour: white

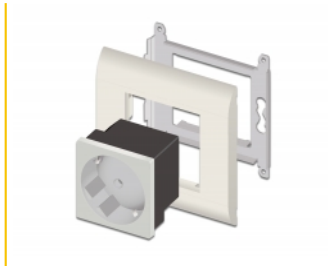
System requirements

- Mains supply with grounding
- A free module port Delock Easy 45 (45 x 45 mm)

Package content

- 10 x Easy 45 Grounded Power Socket 45 x 45 mm
- User manual

Images



Interface

Connector 1:	1 x 3 Pin Terminalblock Steckklemme
Connector 2:	1 x Steckdose CEE 7/3 mit Kindersicherung

Physical characteristics

Length:	45 mm
Width:	45 mm
Height:	39 mm
Colour:	RAL 9003 Weiß