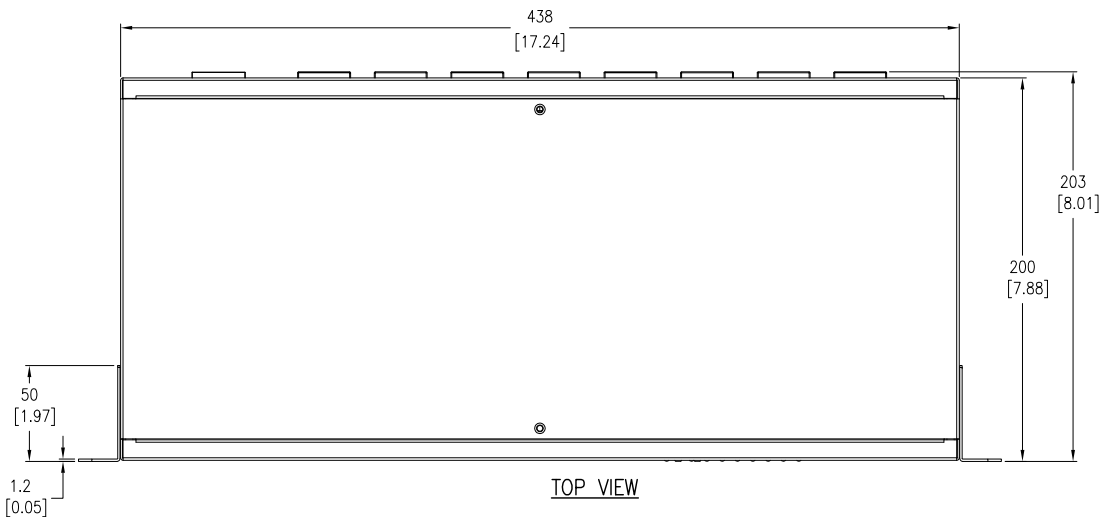
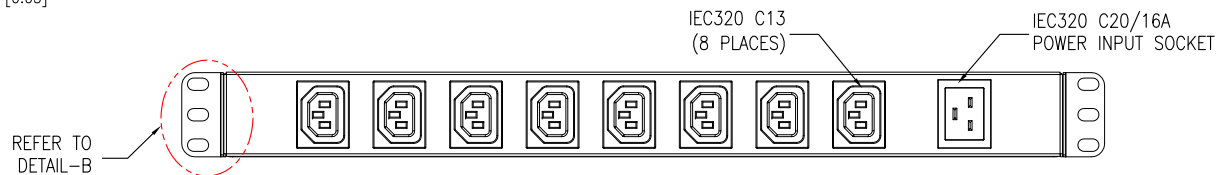


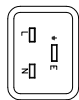
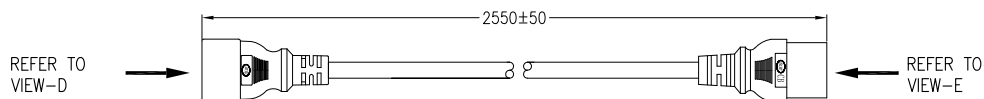
FRONT VIEW



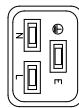
TOP VIEW



REAR VIEW

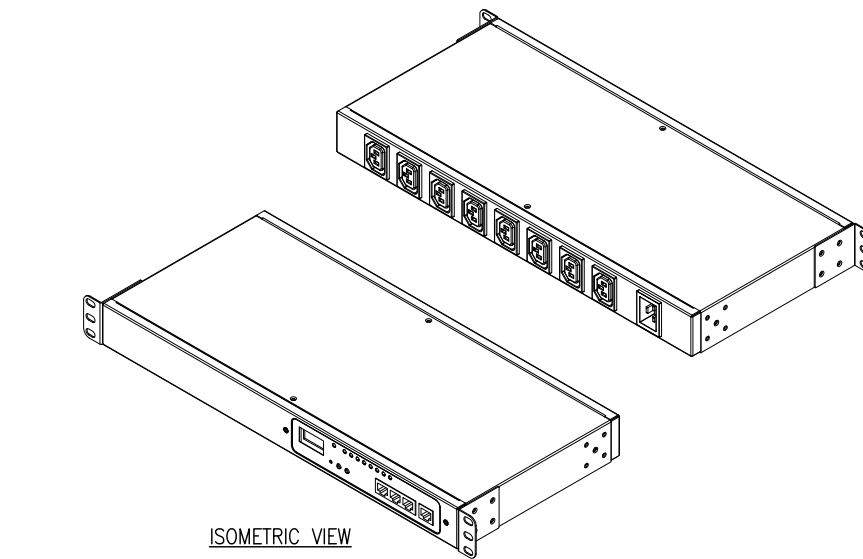


VIEW D - ENLARGED VIEW
IEC C20 PLUG

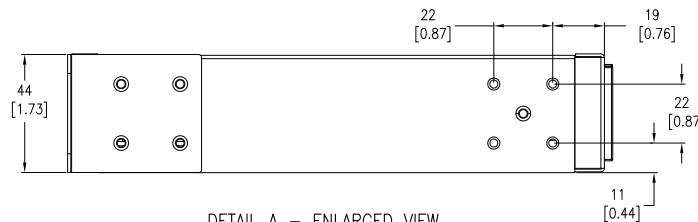


VIEW E - IEC C19 RECEPTACLE
ENLARGED VIEW

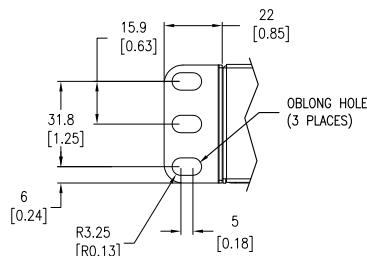
INPUT CORD



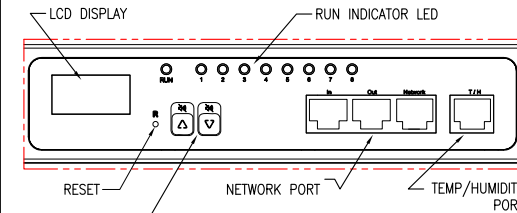
ISOMETRIC VIEW



DETAIL A - ENLARGED VIEW



DETAIL B - ENLARGED VIEW
UNIVERSAL MOUNTING BRACKET



DETAIL C - ENLARGED VIEW
DISPLAY INTERFACE

NOTES:

1. INSTALLATION SHALL COMPLY WITH ALL APPLICABLE NATIONAL, STATE AND LOCAL ELECTRICAL CODES.
2. REFER TO PRODUCT DOCUMENTATION FOR ADDITIONAL DETAILS PRIOR TO INSTALLATION AND PREPARATION WORK.
3. UNLESS OTHERWISE SPECIFIED, ALL DIMENSIONS ARE IN MILLIMETERS [INCHES].
4. NET WEIGHT OF UNIT IS 2.8kg [6.17 lb].

THIS DRAWING AND SPECIFICATIONS HEREIN ARE THE PROPERTY OF SCHNEIDER ELECTRIC AND SHALL NOT BE COPIED, REPRODUCED OR USED IN WHOLE OR IN PART, AS THE BASIS FOR THE MANUFACTURE OR SALE OF ITEMS WITHOUT WRITTEN PERMISSION FROM SCHNEIDER ELECTRIC. THIS DRAWING IS BASED UPON LATEST AVAILABLE INFORMATION AND IS SUBJECT TO CHANGE WITHOUT NOTICE.

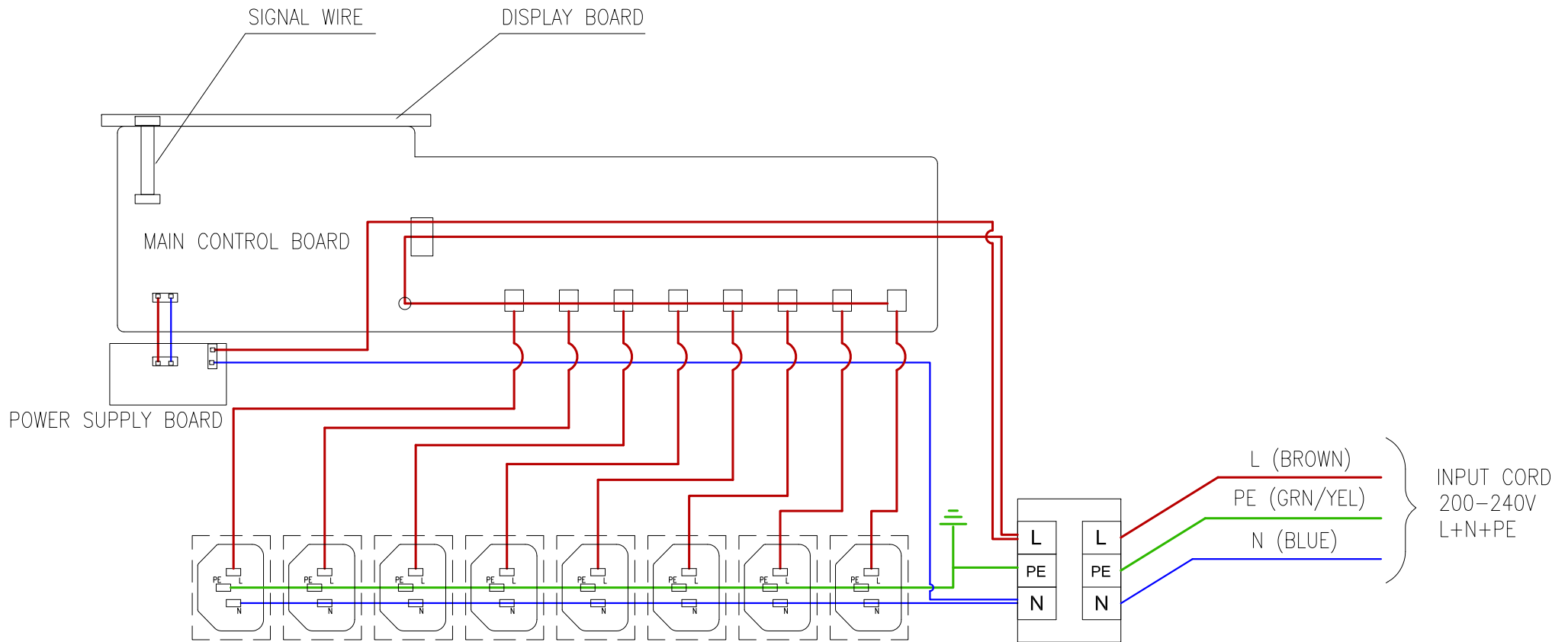


TITLE: Easy PDU, Switched
1U, 16A, 230V
INPUT: IEC320 C20, L+N+PE
OUTPUT: (8)IEC320 C13
GENERAL ARRANGEMENT

PROJECT: SUBMITTAL DRAWING SHEET 1 OF 2

| | | | |
|-----------|-------------|-------|-----------|
| DWG NO: | EPDU1016S | REV: | 0 |
| DRAWN: | JAYAPRAKASH | DATE: | 27-MAR-20 |
| ENGINEER: | Troy LIU | DATE: | 31-MAR-20 |
| APPROVED: | Tong XU | DATE: | 31-MAR-20 |

FIRST ANGLE PROJECTION



NOTES:

1. INSTALLATION SHALL COMPLY WITH ALL APPLICABLE NATIONAL, STATE AND LOCAL ELECTRICAL CODES.
2. REFER TO PRODUCT DOCUMENTATION FOR ADDITIONAL DETAILS PRIOR TO INSTALLATION AND PREPARATION WORK.
3. THIS DRAWING DEPICTS THE POWER SYSTEM CONNECTIONS AND IS NOT REPRESENTATIVE OF THE PHYSICAL LAYOUT. PLEASE REFER TO MECHANICAL DRAWINGS FOR PHYSICAL LAYOUT.

THIS DRAWING AND SPECIFICATIONS HEREIN ARE THE PROPERTY OF SCHNEIDER ELECTRIC AND SHALL NOT BE COPIED, REPRODUCED OR USED IN WHOLE OR IN PART, AS THE BASIS FOR THE MANUFACTURE OR SALE OF ITEMS WITHOUT WRITTEN PERMISSION FROM SCHNEIDER ELECTRIC. THIS DRAWING IS BASED UPON LATEST AVAILABLE INFORMATION AND IS SUBJECT TO CHANGE WITHOUT NOTICE.



TITLE: Easy PDU, Switched
1U, 16A, 230V
INPUT: IEC320 C20, L+N+PE
OUTPUT: (8)IEC320 C13
SCHEMATIC DIAGRAM

PROJECT: SUBMITTAL DRAWING SHEET 2 OF 2

DWG NO: EPDU1016S REV. 0

DRAWN: JAYAPRAKASH 27-MAR-20

ENGINEER: Troy LIU 31-MAR-20

APPROVED: Tong XU 31-MAR-20

FIRST ANGLE PROJECTION