

EDGE collection keeps all its promises in terms of protection and ergonomics: the combination of Air Cell and Edge technologies effectively protects the device in event of fall or side impacts.

In addition, its foldable flap with a stylus holder combines functionality and screen protection.



PROTECTIVE FOLIO CASE FOR GALAXY TAB A 2019 10.1"

Ref. 060002



Weight: 200 g | Dimensions: 155 x 250 x 15 mm

+ Access to all ports and functionalities

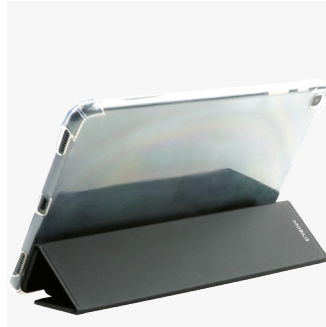
PROTECTIVE FOLIO CASE FOR GALAXY TAB A 2019 10.1"

2
YEAR
WARRANTY

Transparent back



Tripod



Viewing mode



Typing mode

Stylus holder



Stylus not included

SPECIFICATIONS

Ref	Product	EAN Code	
060002	Edge for Galaxy Tab A 2019 10.1"	3700992518893	
Packed product weight	Packed product dimensions	SPCB quantity	PCB quantity
250 g	161 x 289 x 17 mm	5	40



www.mobiliscase.com

 @Mobiliscase
  @Mobiliscase
  @MOBILIS
  @Mobiliscase

MOBILIS
CARE & CARRY

MOBILIS™, the MOBILIS™ logos (MOBILIS™ logo, MOBILIS™ Care & Carry logo and M logo), and other distinctive signs appearing on this file are trademarks of MOBILIS DEVELOPMENT. All logos are also protected by Copyright. Non-contractual pictures. Product compatible with Galaxy Tab A 2019 10.1" device. Galaxy is a trademark or registered trademark of Samsung Electronics Co., Ltd, which holds the exclusive rights. This product is not licensed, authorized or approved by Samsung Electronics Co., Ltd.