



The Wellness Mouse

The mouse alternative that prevents the strain of desk work.



Fight the Pain™

More and more of us spend our working days sitting in front of a screen. We sit still for too long in static positions that our bodies are not designed for. Many of us suffer from pain in our arms, shoulders and neck.

At Mousetrapper, we have a mission: No one should suffer pain due to working in an awkward position with a mouse.

In 1994, Swedish inventor Rolf Strömberg launched our first Mousetrapper – an enormous success which today is the market leader in Scandinavia and is being launched internationally. We now know, along with most ergonomics specialists and physiotherapists, that the strain of desk work can be avoided.

Mousetrapper is the mouse alternative that prevents repetitive strain injury and other problems that may arise when working with a traditional mouse. Because Mousetrapper is positioned centrally in front of the keyboard, it encourages an ergonomically healthy position that keeps your arms close to your body and your hands near the keyboard.

This helps you avoid and, in many cases, relieve strain injuries that can arise from stretching your arm beyond your natural shoulder width, as you do with a conventional mouse. You no longer have to reach beyond the keyboard while using the mouse. The wide, cushioned wrist support also relieves strain on your neck, shoulders, arms and wrists.

Try Mousetrapper – the wellness mouse.

Read more about us and our products at mousetrapper.com



Made in Sweden – for people and the planet.

There is so much more to sustainability than choice of materials and transportation. Everything is connected - decisions made today have consequences for tomorrow. It is, of course, a matter of our planet and the future environment, but also about creating favourable conditions for employees, contributing to societal benefit and promoting sound business practices. At Mousetrapper, we want more than just a well-written policy. We really want to contribute and everyone has to make an effort. It will not be easy. Working as a manufacturer has consequences that are not immediately apparent. However, wherever possible, we want to be a part of an integrated whole and accept our share of responsibility.

DESIGNED, DEVELOPED AND MADE IN SWEDEN

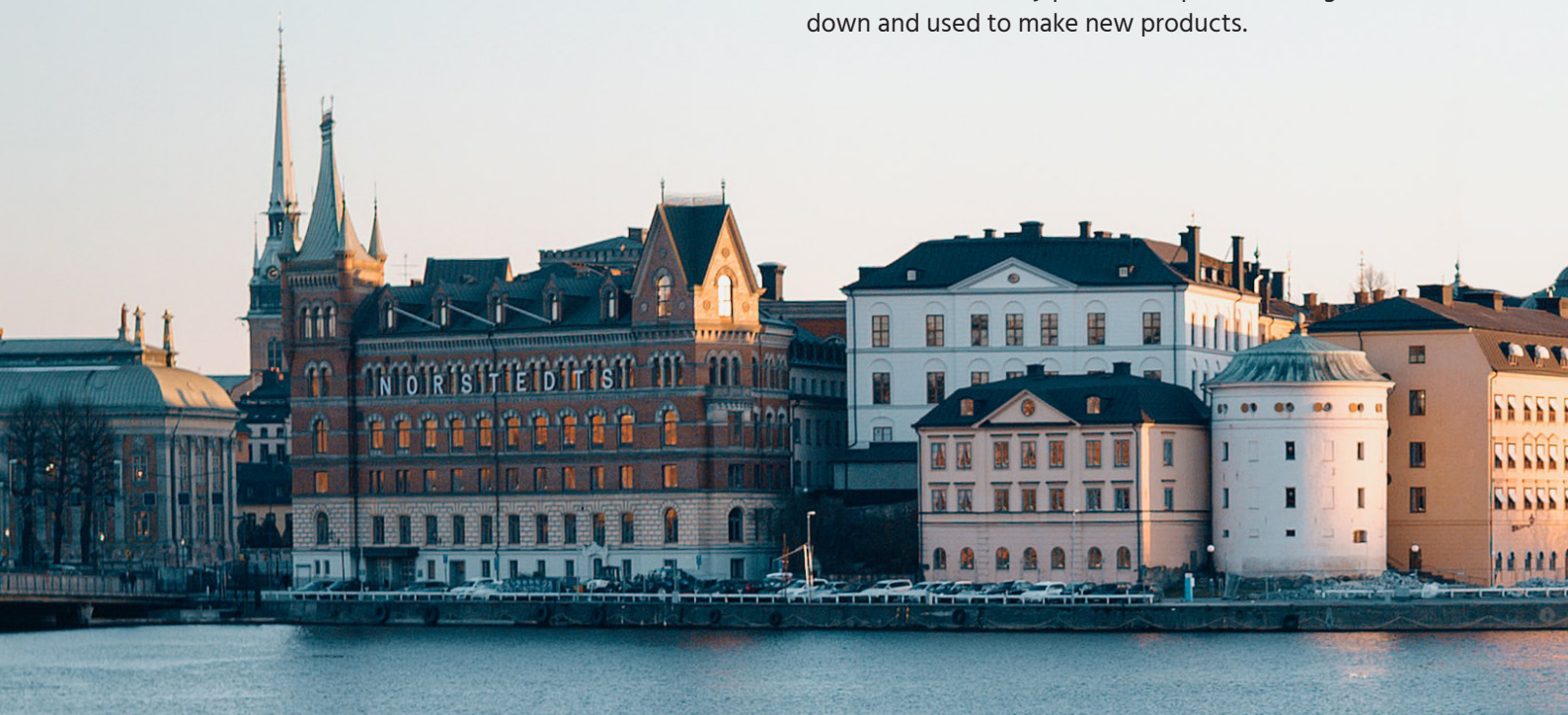
As we now produce more and more – in fact, most things – in our own premises just outside Stockholm, we gain better control over, for example, production times and quality. And since we have invested in the automation of many heavy or repetitive tasks, we also have a positive side effect. Humans are fantastic, but an automated station makes even fewer errors. Never really, if everything works as it should. This means that we can now produce to an even higher quality.

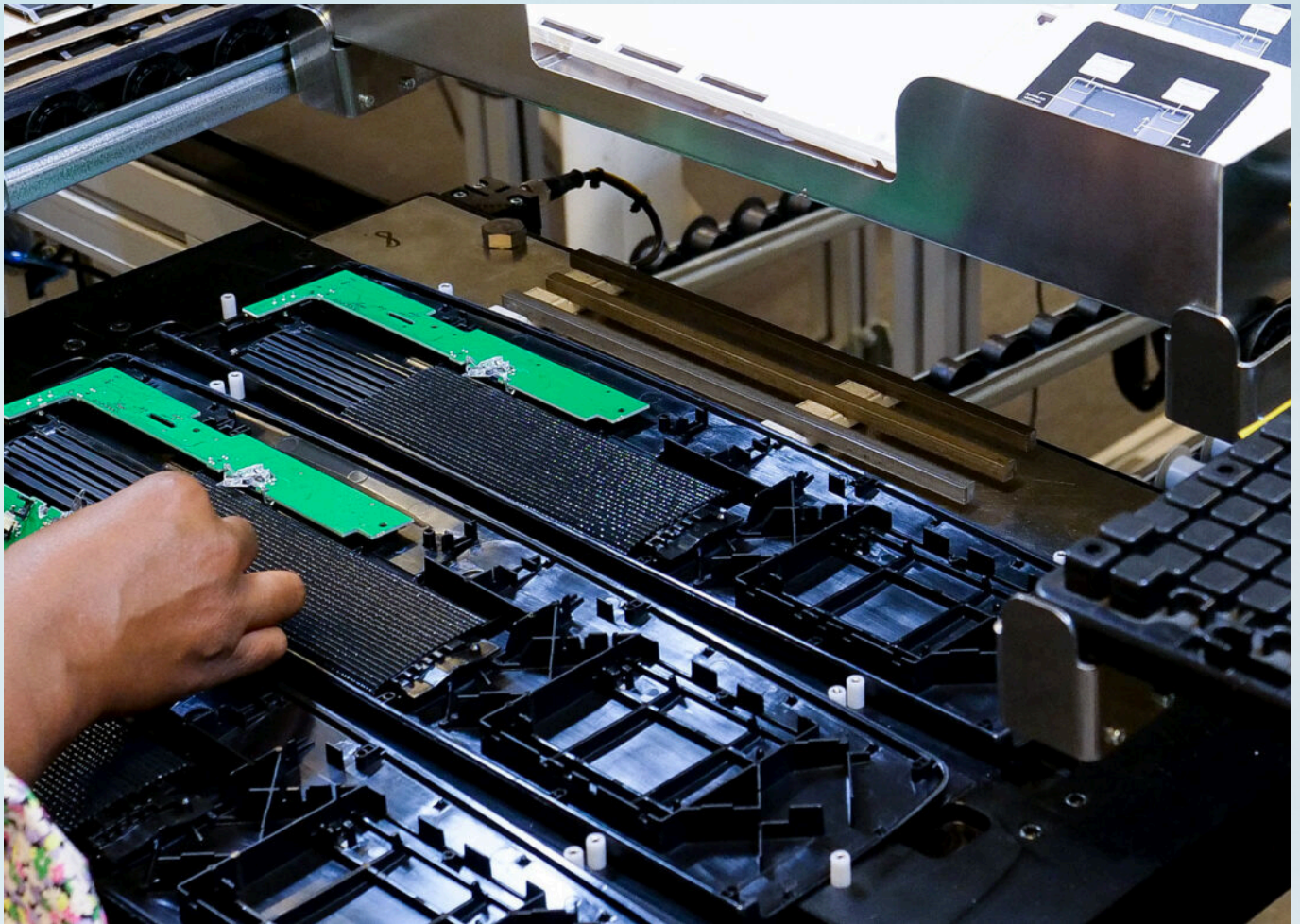
Another important aspect of having the production in our own premises is that we also avoid a lot of transport. Transport is one of the biggest environmental culprits, and in line with our sustainability strategy, we are working hard to reduce our transport needs. So the more we can produce in our own premises, the fewer long-distance transports are needed, which is positive and reduces our carbon footprint.

HOW CAN A MANUFACTURER IN SWEDEN CONTRIBUTE TO A BETTER ENVIRONMENT?

Mousetrapper's products are not only designed to last but also to minimise environmental impact. These are not throwaway products. Our Mousetrappers have a reputation for longevity. Some people think they last too long – we don't agree, because we're proud of our quality. The products are easy to clean, and spare parts for ongoing service and maintenance are available - all key to prolonging their longevity. And they are designed to be easily recycled to the maximum extent possible once they finally reach the end of their service life.

Our suppliers are mainly located in our vicinity, and have been selected with care. For example, plastic components are manufactured in Estonia and circuit boards in Sweden. Also, we have chosen suppliers that we can work close to and exert real influence. Naturally, we are always on the lookout for functional, recyclable materials. We also make sure that faulty plastic components are ground down and used to make new products.





SOUND BUSINESS PRACTICES PRODUCE LONG-TERM OUTCOMES

Of course, it is easy to take shortcuts and cheat one's way to quick and easy victories. But at Mousetrapper, we want to think long-term. If we can develop competitive products and endeavour for long-term professional collaborations with our partners and suppliers, we believe we will be rewarded with long-term success. We want to build a culture based on transparency and trust in these relationships - where we can rely on each other and together create sound business practices.

HAVE ANY QUESTIONS OR IDEAS TO HELP US IMPROVE? PLEASE FEEL FREE TO CONTACT US.

Sustainability can easily become another item to check off a to-do list. However, that's not how we want it to be, and we would appreciate your help. We are constantly looking for ways to develop our business and products from a holistic perspective – where the environmental, social and financial responsibility go hand in hand.

Anders Ehnбом, CEO Mousetrapper



Advance 2.0



Advance 2.0 is our top seller and with 6 programmable keys, it offers you a range of options to customise your Mousetrapper exactly the way you want it. Mousetrapper Advance 2.0 is an ergonomic mouse alternative that prevents repetitive strain injury and other problems that may arise when working with a traditional mouse.

Benefits of Advance 2.0

A total of 6 programmable buttons give you plenty of options for setting up your Mousetrapper exactly the way you want. The functions of the buttons can easily be changed via MT Keys.

Advance 2.0 has a folding keyboard support, which makes it equally compatible with new low-profile keyboards and higher-profile standard keyboards.

Key features

- » Super-slim, ergonomic design
- » Control pad with click and scroll functions
- » 6 programmable buttons that can easily be customized using MT Keys at www.mousetrapper.com/software
- » Replaceable wrist supports
- » Height adjustment with folding non-slip surface
- » 2000 dpi

Facts

- » Width: 480 mm
- » Height: 20 mm
- » Depth: 110 mm
- » Weight: 715 g
- » Product code: MT112



Advance 2.0+



Advance 2.0+ is the premium version of our bestseller, Advance 2.0. It has 6 programmable keys, easy-clean wrist support and stylish design with keys outlined in white. Advance 2.0+ relieves and prevents mouse strain and other problems that can arise from working with a traditional mouse.

Benefits of Advance 2.0+

Mousetrapper Advance 2.0+ is the upgraded version of our bestseller Advance 2.0. In common with the Advance 2.0, it has no less than 6 programmable keys, but with the same luxurious wrist support featured on the Mousetrapper Prime. The strain-reducing wrist supports can be wiped clean, and kept clean and fresh using a disinfectant.

The 6 programmable keys give you a range of options to customise your Mousetrapper to your exact requirements. The functions of the buttons can easily be changed via MT Keys.

Advance 2.0+ also has a non-foldable keyboard underlay to ensure your Mousetrapper fits perfectly with any low-profile or standard high-profile keyboard.

Key features

- » Super-slim ergonomic design
- » Control pad with click and scroll functions
- » 6 programmable buttons that can easily be customized using MT Keys at www.mousetrapper.com/software
- » Replaceable wrist support that can be kept clean using disinfectant
- » Adjustable height with foldable friction underlay
- » 2000 dpi

Facts

- » Width: 480 mm
- » Height: 20 mm
- » Depth: 110 mm
- » Weight: 715 g
- » Product code: MT122



Lite



Lite is the base product in the Mouserapper range, and is designed to suit a full-size keyboard. Lite is an ergonomic alternative to a mouse that prevents repetitive strain injuries and other problems that can occur when you use a conventional mouse.

Benefits of Lite

Lite is the base product in the Mouserapper range, and is designed to suit a full-size keyboard. It is intended for users who only need the right-click, scroll and click functions on the Mouserapper's unique control pad.

Lite also has soft, padded wrist supports available in titanium grey or red.

Key features

- » Four buttons with scroll and auto-scroll functions
- » Control pad with click function
- » USB plug-and-play
- » 1500 dpi

Facts

- » Width: 495 mm
- » Height: 25 mm
- » Depth: 125 mm
- » Weight: 670 g
- » Product code: Black/titanium grey MT114
- » Product code: Black/red MT115



Prime



Prime has everything you want from a Mousetrapper...and more. With wireless Bluetooth connection and 8 programmable keys, it offers you a range of options to customise your Mousetrapper exactly the way you want it. Mousetrapper Prime is an ergonomic mouse alternative that prevents repetitive strain injury and other problems that may arise when working with a traditional mouse.

Benefits of Prime

Everything you want from a Mousetrapper and a little bit more. Prime's 8 programmable keys offer you significantly more options for customising your Mousetrapper to your exact requirements. The functions of the buttons can easily be changed via MT Keys.

With Prime, you can work wirelessly via Bluetooth – of course, you can use a USB cable for connection if you prefer.

The wrist supports on Prime can be wiped clean and replaced, making it easy to keep the product in pristine condition. Prime comes with a foldable keyboard support that makes it equally compatible with standard higher-profile keyboards and the new ultra-thin keyboards.

Key features

- » Super-slim, ergonomic design
- » Control pad with click and scroll functions
- » Option to work wirelessly with Bluetooth
- » 8 programmable buttons that can easily be customized using MT Keys at www.mousetrapper.com/software
- » Wrist supports can be cleaned with surface disinfectants
- » Replaceable wrist supports
- » Height adjustment with folding non-slip surface
- » 4 months of battery life between charges
- » Rechargeable battery
- » 2000 dpi
- » Bluetooth 4.1

Wireless usage

Connect the battery in the battery compartment and then connect the USB cable to charge until the LED is green. Then disconnect the cable and open the computers bluetooth menu and connect to "Prime ble".

Facts

- » Width: 480 mm
- » Height: 20 mm
- » Depth: 110 mm
- » Weight: 720 g
- » Product code: MT123



Delta



Mousetrapper Delta is an exciting addition to our range of ergonomic mouse solutions. You control Delta with the help of Control Bar, our newly developed carbon fibre rollerbar, instead of our unique Control Pad. The Control Bar gives you a relaxed, centred position – and with six customizable buttons you can work even more efficiently. Delta is made in Sweden using recycled plastic.

Benefits of Delta

Delta adds a new dimension to Mousetrapper's wide range of centred, ergonomic mouse solutions. Its wide, unique carbon fibre Control Bar has a soft texture that enables you to work precisely and efficiently.

The length has been adapted to make the Control Bar easily accessible when you use the keyboard. The 4000 dpi resolution makes scrolling, clicking and zooming easy, and gives you an outstandingly precise feel while working.

The six programmable buttons offer you the freedom to create creative shortcuts to make your work easier. The functions of the buttons can easily be changed via MT Keys.

Delta has a USB hub to charge and/or connecting multiple devices.

Key features

- » Ergonomic design
- » 255 mm wide Control Bar with click and scroll function which can be moved 125 mm sideways
- » 6 programmable buttons that can easily be customized using MT Keys at www.mousetrapper.com/software
- » Soft wrist rest that can be disinfected
- » The wrist rest is easy to replace with its magnetic attachment
- » Made of recycled plastic
- » Adjustable friction/height pad for keyboard
- » 2 USB ports (3.3V) for charging and connecting multiple devices
- » Connects with the included USB-Micro cable
- » 4000 dpi

Facts

Delta Regular Grey

- » Width: 500 mm
- » Height: 27 mm
- » Depth: 120 mm
- » Weight: 830 g
- » Product code: MT151

Delta Extended Grey

- » Width: 500 mm
- » Height: 27 mm
- » Depth: 145 mm
- » Weight: 910 g
- » Product code: MT150

Delta Regular Black

- » Width: 500 mm
- » Height: 27 mm
- » Depth: 120 mm
- » Weight: 830 g
- » Product code: MT153

Delta Extended Black

- » Width: 500 mm
- » Height: 27 mm
- » Depth: 145 mm
- » Weight: 910 g
- » Product code: MT152

Delta is available in two colours and in two different sizes.



Product code: MT151



Product code: MT150



Product code: MT153



Product code: MT152

Alpha



Mousetrapper
The ergonomic mouse

Mousetrapper Alpha is the world's first centred ergonomic pointing device with a full-sized, integrated keyboard. Alpha has a total of 19 programmable keys, making it our most dynamic Mousetrapper to date.

Benefits of Alpha

Mousetrapper Alpha is our most comprehensive product, which combines the benefits of a centred pointing device with the user-friendliness of a full-sized keyboard. Alpha connects to your computer via Bluetooth or USB cable and has a long battery life, so you can enjoy the flexibility of working wirelessly. By combining a keyboard and an ergonomic pointing device, you will never need to think about which keyboard is suitable for your Mousetrapper or adjust the gap between the pointing device and keyboard. Mousetrapper Alpha is the perfect product for those who want to reduce pain and improve wellbeing without having to compromise efficiency or flexibility.

Key features

- » Super-slim, ergonomic design
- » Control pad with click and scroll functions
- » Ergonomic mouse alternative with integrated keyboard
- » 19 programmable buttons that can easily be customized using MT Keys at www.mousetrapper.com/software
- » Up to 2 months of battery life between charges
- » Bluetooth 4.1
- » 2000 dpi

Alpha is available in 5 different language layouts

Nordics – product code: MT116

US & Netherlands – product code: MT117

France – product code: MT118

UK – product code: MT119

Germany – product code: MT121

Facts

- » Width: 313 mm
- » Height: 20 mm
- » Depth: 220 mm
- » Weight: 745 g

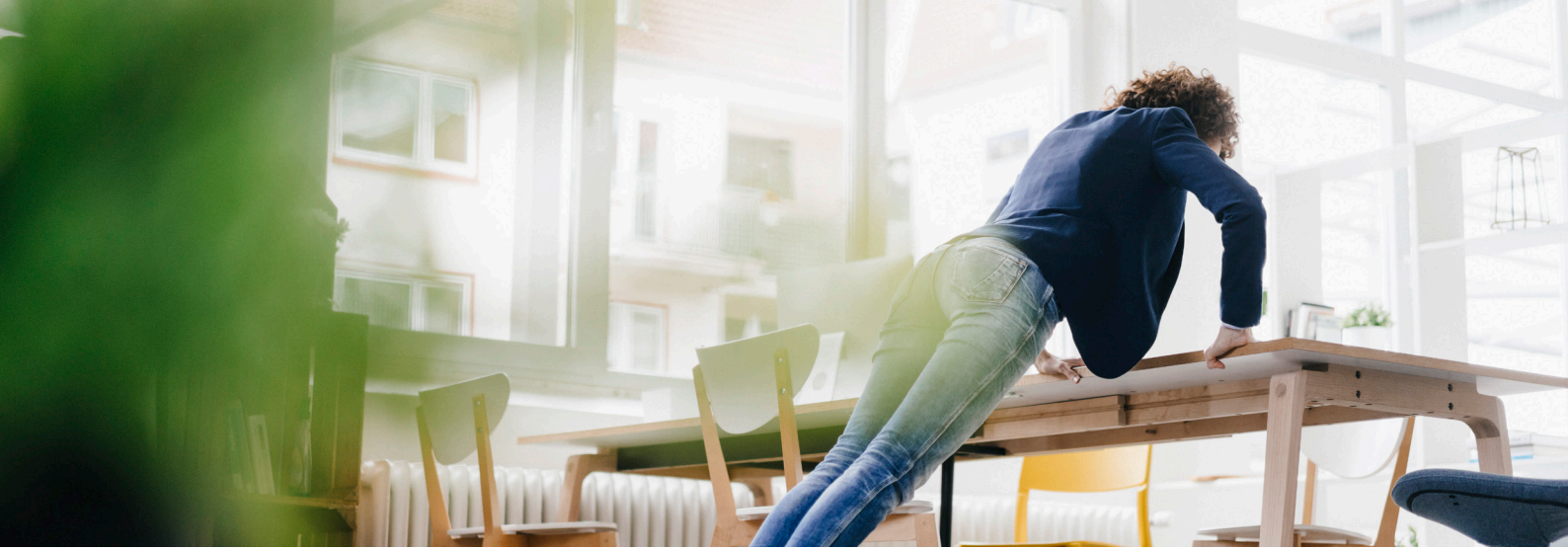


Customise your Mousetrapper to suit your own needs. Experience MT Keys!



Enhance the Mousetrapper experience by adapting the functions of the buttons to suit your workflow. Your Mousetrapper comes pre-installed with functions as above, but with the help of our MT Keys program, it is easy to change them so that you get your Mousetrapper exactly the way you want it. A button can have a keyboard shortcut, function or text string. For example, you can choose a button to lock the computer, switch program windows, or something else entirely. There are over 70 different functions to choose from. By changing the function of the buttons to suit you, you can reduce the number of clicks and make your everyday life more efficient.

To customise the buttons, make sure that your Mousetrapper is connected to the computer using the accompanying USB cable and visit mousetrapper.com/software. And then it's just a matter of getting started. Don't forget to save when you are done. It's as easy as that!



Ergonomic tips and solutions that help.

There are many things you can do to prevent pain when working at a computer. The fundamental thing to remember is that a static position is likely to result in problems sooner or later. Small, static and repetitive unilateral movements can cause adverse effects. A common early warning sign is muscle fatigue.

Frequent breaks, small, simple exercises and ergonomic solutions are key to avoiding unnecessary arm, shoulder or neck pain. Below are some useful tips. Visit mousetrapper.com for more tips and exercises.

5 exercises that counteract pain in the neck, shoulder, arm and wrist

Here are tips on some exercises you can easily do at home. The most important thing is not what you do, but activate the body and the major muscle groups to increase blood circulation.

SQUATS

Stand up and keep your arms straight in front of you. Lean forward slightly and do 5-10 squats, as deep as possible without losing balance. If you find it difficult, you can gently hold the desk.

LIGHT PUSH-UPS

Put your hands against the edge of the table and do 5-15 push-ups.

CALF LIFTS

Stand with your feet shoulder-width apart. Stand on your toes, preferably as high as possible. Try to do 5-10 calf lifts.

NECK EXERCISE

An exercise you can do sitting down. Squeeze your hands behind your neck, gently push your head back and stretch your chest forward, bend your back and stretch. Then, round your back and press your chin against your chest. Keep your hands behind your neck and turn your shoulders sideways and stretch out firmly. Repeat both exercises a couple of times.

SHOULDERS AND ARMS

Sit down and stretch your arms straight up. Slowly move your hands back. Repeat a couple of times. Lower your arms sideways, still stretched so that your elbows are in line with your ears. Push your arms back, when you find the position you also bend your hands backwards. See how long you can keep the position.



The ergonomic workplace.

At Mousetrapper, we are attentive to details, but we also think about the bigger picture. An interplay between several elements is required to create a sustainable and healthy workplace. An ergonomic workplace is important for enabling us to perform and feel our best. Sit-stand desks, regular breaks and ergonomic exercises are important components for a healthy environment.

Mousetrapper's principal product is an ergonomic mouse designed to minimise the risk of strain and imbalanced loading in the arms, shoulders, back and neck. But we also focus on accessories that form important components in an ergonomic work environment. Complement your workplace with Mousetrapper's accessories, such as

our standing desk mat, laptop/tablet stand, forearm supports, our portable standing desk or keyboard. By looking at the whole picture, you can reduce the risk of pain and repetitive strain injuries, and create a sustainable environment with a thriving workforce.

See more of our accessories →



Standfriend

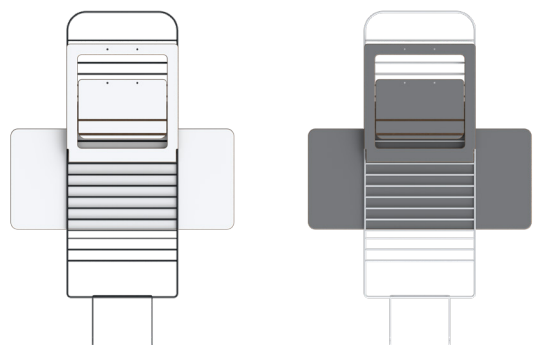
Elegant and ergonomic. Standfriend from Mousetrapper is one of the latest additions to our family of solutions to help you avoid unnecessary pain while working at the computer. By switching between standing and sitting, you feel better and have more stamina. Complete with a centered pointing device for an elegant, ergonomic solution – at home or at the office.

Benefits of Standfriend

We all feel better from a varied working position. Standfriend is an excellent solution to vary your working position easily. Intelligent design means that you can easily find the right working height for you. The generous keyboard platform provides space for your mobile phone, notes or water glass.

Designed to be easy to handle. You take out and remove your Standfriend in a few steps – and it looks good on the wall when you are not using it.

Standfriend is designed and manufactured in Sweden – which reduces transportation needs and provides transparency of the entire production cycle.



Standfriend is easy to store, and the folded, flat design does not take up much space. Hang it on the wall or put it away when you don't need it.

Facts

- » Width: 600 mm
- » Depth: 495 mm
- » Height: 680 mm
- » Weight: 6.5 kg
- » Working height: 150-190 cm
- » Max. screen size: 17"
- » Max. load: 7 kg

Two colours in one:

The desk is reversible; choose between a smooth White surface or an elegant Graphite Grey. Choose between black or light gray metal stand.

- » Model TB501: Black metal stand
- » Model TB502: Light gray metal stand



Type

NEW!



The perfect keyboard. Many people have asked which keyboard is most suitable for use with Mousetrapper. We now have the answer: Type has been developed to perfectly suit your Mousetrapper. Smart solar cells mean that you don't have to worry about charging Type if you want to work wirelessly, and with 11 programmable buttons you can easily make your work more efficient. Type is also made from recycled plastic!

Benefits of Type

If you want one ergonomic unit, Type is the ideal solution for your Mousetrapper. You don't need to slide the keyboard sideways. Align Type with your Mousetrapper, and automatically you have a correct working position.

Type also has several smart features that you'll appreciate. With the built-in solar cells, it doesn't need to be charged (depending on usage and light conditions). With Type, you can also work wirelessly via Bluetooth or use the accompanying USB cable. Thanks to Bluetooth 5.0, you can connect to 4 different devices in parallel. This means that if you're working on your computer, you can continue typing on your tablet at the press of a key – or switch to the TV to search for the latest film.

With 11 programmable buttons, the only limit is your imagination. Streamline the way you work by customizing the buttons according to your needs and work methods via MT Keys.

Type – the perfect keyboard.

Key features

- » Ultra-slim ergonomic design
- » Developed to provide the correct ergonomic position together with Mousetrapper
- » Made from recycled plastic
- » Charged by solar cells
- » Possibility to work wirelessly via Bluetooth
- » 11 programmable buttons that can easily be customised using MT Keys at www.mousetrapper.com/software
- » Adjustable height both front and back
- » Bluetooth 5.0
- » Can be connected to four devices in parallel

Type is available in 3 different language layouts

Nordics – product code: TB403

France – product code: TB405 (AZERTY)

UK – product code: TB406

Facts

- » Width: 480 mm
- » Height: 12 mm
- » Depth: 133 mm
- » Weight: 730 g



Type Mini



The sleek keyboard that's always at hand. Are you looking for a stylish, compact, and ergonomic keyboard? Then Type Mini is the perfect solution. It's easy to carry with you, takes up little space on your desk, and is also made from recycled plastic!

Benefits of Type

If you're frequently on the move and need access to a sleek keyboard that doesn't take up much space on your desk – then Type Mini is the right choice for you.

Type Mini is designed in Sweden, made from recycled plastic, and designed to provide you with an ergonomic hand position while working. With the foldable support legs, you can easily adjust the height both at the front and back, by 5 or 8 mm, to find your ideal hand position.

Our mission has always been to manufacture well-designed ergonomic products, and Type Mini is no exception!

Key features

- » Slim ergonomic design
- » Plug n' play
- » Made from recycled plastic
- » Adjustable height both front and back (5 & 8 mm)
- » Connection via USB-C (USB-A adapter included)

Type is available in 4 different language layouts

Nordics – product code: TB403

France – product code: TB405 (AZERTY)

UK – product code: TB406

US – product code: TB412

Facts

- » Width: 323 mm
- » Height: 15 mm
- » Depth: 127 mm
- » Weight: 420 g



NumPad



Get Faster with Numbers. A numeric keypad makes your work easier if you deal with numbers, whether you're working on calculations, financial or accounting services, or just need a general calculator. NumPad is wireless and the perfect complement to Mousetrapper's Type Mini or Alpha. It's also convenient to use NumPad with a laptop.

Benefits of Type

The compact design of the wireless NumPad provides a numeric keypad that meets all your requirements. Once you've gotten used to having one, it's hard to do without. Work more efficiently with NumPad!

If you currently have a keyboard without a numeric section, NumPad is the perfect complement.

For those who work on a laptop, there's no need to carry a full-sized keyboard anymore; NumPad is all you need to keep your numbers in order.

NumPad can be connected wirelessly via a 2.4 MHz dongle and placed on both your keyboard's right and left sides. Made from recycled plastic.

Key features

- » Excellent companion for Alpha or Type Mini
- » Made from recycled plastic
- » Works wirelessly via a 2.4 MHz dongle
- » PC-compatible
- » Rechargeable battery

Facts

- » Width: 103 mm
- » Height: 8 mm
- » Depth: 120 mm
- » Weight: 100 g
- » Product code: TB420



More ergonomic tips!



SCREEN

It is also important to consider the position of the screen. Your eyes prefer to look down. Place the upper part of the screen at eye level, or slightly lower.



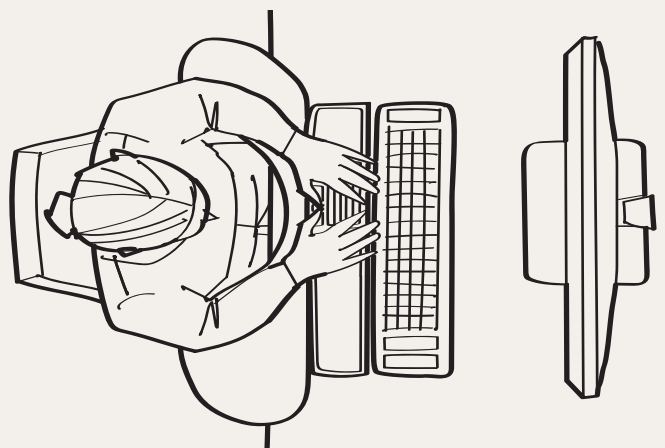
LAPTOP STAND

If working on a laptop, consider a laptop/tablet stand and a standalone keyboard to achieve a correct, comfortable height.



STAND UP

By working standing up, we burn almost twice as much energy as when we sit down. A mat prevents your feet from getting tired, which means you can stand for longer periods of time.



ARMREST

Another aid is an armrest that supports a naturally centred and relaxed position.

Additional accessories



Armrest Asymmetrical

Support your forearms and avoid straining your arms with Mousetrapper's armrest. The armrest is available in two different designs, asymmetrical and symmetrical.

Asymmetrical

- » Width: 680 mm
- » Depth: 220 mm
- » Height: 20 mm
- » Waist: 40 mm
- » Weight: 1400 g
- » Product code: TB215



Armrest Symmetrical

Support your forearms and avoid straining your arms with Mousetrapper's armrest. The armrest is available in two different designs, asymmetrical and symmetrical.

Symmetrical

- » Width: 575 mm
- » Depth: 220 mm
- » Height: 25 mm
- » Waist: 40 mm
- » Weight: 1100 g
- » Product code: TB216

Laptop/Tablet Stand

Mousetrapper's Laptop/Tablet Stand helps you keep your head in an ergonomic position and your eyes at the right height.

- » Length: 254 mm
- » Width: 183/267 mm (min/max)
- » Height: 10/184 mm (min/max)
- » Weight: 430 g
- » Product code: TB402

setrapper

Active

The Active standing mat helps prevent tiredness and aches in your feet, and helps you maintain a good posture when standing up and working.

- » Length: 740 mm
- » Width: 450 mm
- » Height: 18 mm
- » Weight: 875 g
- » Product code: TB401



Scan the QR code to read more about our accessories.

