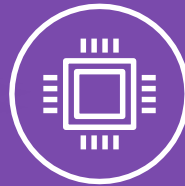


New Year. New 100e Chromebook.

SCHOOL'S IN SESSION, AND THE 100e CHROMEBOOK IS READY TO WORK.

Engineered to earn perfect attendance, the 100e never takes a day off from learning. Its powerful, portable design features state-of-the-art learning tools that will suit any size school or budget. And thanks to its user-friendly interface, students and teachers can easily access Google Classroom, G Suite for Education and today's most popular education apps, all through their own personalized Google IDs. Plus, the Chrome Education license allows school administrators to control their entire fleet of devices, so safety and security always remain top of mind. And if you're worried about durability, don't be. The 100e was built to withstand even the most chaotic of classrooms. All-in, this machine was made to excel in every learning environment.



A+ ACCESSIBILITY

From its easy-to-use interface to its powerful Intel GKL Processor, the 100e is a total learning tool. Thanks to its unparalleled speed, there's never any lag time when it comes to learning; students can always depend on immediate access to their assignments and favorite education apps. And between Google Classroom and G Suite for Education, teachers can easily stay organized and promote a collaborative learning environment where students share work and stay connected all year long.



BUILT FOR BUMPS

From class to class, hallways to backpacks to bus rides, the 100e was built with every busy student in mind. That's why its sleek design features rubber bumpers that can handle a drop up to 75 cm and reinforced ports for all those unintentional bumps along the way. When you factor in the mechanically anchored keys and water-resistant design, you've got a machine tough enough to last an entire school year.



BIG FEATURES, COMPACT CHROMEBOOK

The 100e is light done right. Weighing in at only 2.68 lbs, the 100e is effortless to carry, but full of powerful possibilities. With up to 10 hours* of battery life, students can spend more time on their schoolwork and less time worrying about charging their PCs. Plus, its anti-glare display helps put a little less eye strain on screen time.

*Based on Google Chrome Power_LoadTest, a battery run down test. For more information about Google Chrome Power_LoadTest, visit www.chromium.org. Test results should be used only to compare one product with another and are not a guarantee you will experience the same battery life. Battery life may be significantly less than the test results and varies depending on your product's configuration, software, usage, operating conditions, power management settings and other factors. Maximum battery life will decrease with time and use.

Lenovo 100e Chromebook



Lenovo™

PERFORMANCE

Processor	Intel® Intel GLK Performance Processor
Operating System	Chrome OS™
Graphics	Intel® Integrated graphics
Memory	4 GB
Storage	32GB eMMC
Audio	3.5mm Combo Audio
Battery	42 Whr, Up to 10 hrs*

DESIGN

Display	11.6" HD antiglare display (1366x768) TN 250
Camera	720p Front-Facing Camera
Dimensions	290 x 204 x 19.99mm / 11.41" x 8.03" x .78"
Weights	1.21kg, 2.68lbs
MIL-SPEC Standard	Yes
Keyboard	Water-resistant (330 ml) with touchpad & mechanically anchored keys
Durability Features	Reinforced ports & hinges, drop-resistant up to 29.5" (75cm)

CONNECTIVITY

Ports & Slot	USB-C™; USB 3.0; WiFi 802.11 AC (2 x 2), Bluetooth 4.2, Micro SD card reader Combo mic / audio jack, Kensington lock slot
--------------	------------------------------------------------------------------------------------------------------------------------------

lenovo.com/chromebook

Lenovo reserves the right to alter product offerings and specifications at any time, without notice. Lenovo makes every effort to ensure accuracy of all information but is not liable or responsible for any editorial, photographic or typographic errors. All images are for illustration purposes only. For full Lenovo product, service and warranty specifications visit www.lenovo.com. Lenovo makes no representations or warranties regarding third party products or services. Trademarks: The following are trademarks or registered trademarks of Lenovo: Lenovo, the Lenovo logo, ideapad, ideacentre, yoga and yoga home. Microsoft, Windows and Vista are registered trademarks of Microsoft Corporation. Ultrabook, Celeron, Celeron Inside, Core Inside, Intel, Intel Logo, Intel Atom, Intel Atom Inside, Intel Core, Intel Inside, Intel Inside Logo, Intel vPro, Itanium, Itanium Inside, Pentium, Pentium Inside, vPro Inside, Xeon, Xeon Phi, and Xeon Inside are trademarks of Intel Corporation in the U.S. and/or other countries. Chromebook is a registered trademark of Google Inc. Other company, product and service names may be trademarks or service marks of others. Battery life (and recharge times) will vary based on many factors including system settings and usage. Visit www.lenovo.com/lenovo/us/en/safecomp/ periodically for the latest information on safe and effective computing. ©2019 Lenovo. All rights reserved.

*Based on Google Chrome Power_LoadTest, a battery run down test. For more information about Google Chrome Power_LoadTest, visit www.chromium.org. Test results should be used only to compare one product with another and are not a guarantee you will experience the same battery life. Battery life may be significantly less than the test results and varies depending on your product's configuration, software, usage, operating conditions, power management settings and other factors. Maximum battery life will decrease with time and use.

LENOVO OFFERINGS & SERVICES

Chrome Education license

Chrome Education license enables IT administrators to manage a few or a fleet of Chrome devices within a centralized, easy and intuitive software interface. Lenovo makes it easy to acquire as an OEM authorized reseller of Chrome Education license.

Warranty upgrades - onsite and next business day

Maximize PC uptime and productivity by providing convenient, fast repair service at your organization.

Warranty extensions (1-3 years total duration)

This fixed-term, fixed-cost service helps accurately budget for Chromebook expenses, protects your valuable investment and lowers the cost of ownership over time.

Accidental damage protection

Avoid the hassles of unexpected repair costs. Provides coverage for non-warranted damage incurred under normal operating conditions, such as minor spills, drops or screen damage.

G Suite for Education

Easy access to Google's G Suite family of apps keeps everything under one roof and free of software licensing fees. Simple cloud management and 24/7 support make Chromebooks easily scalable to any size classrooms, big or small.

OPTIONS / ACCESSORIES



ThinkPad
USB-C Dock



Lenovo Wireless
Mouse Keyboard



Lenovo
On-Ear-Headphones