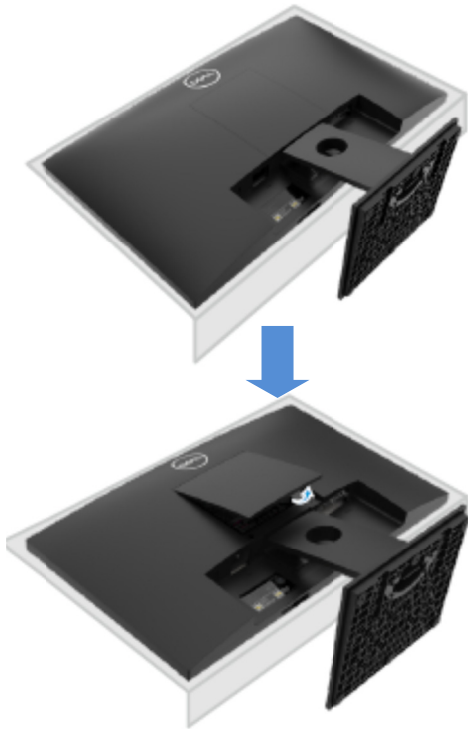


## 1. Disassembly Procedures

**S1** Turn off the monitor.

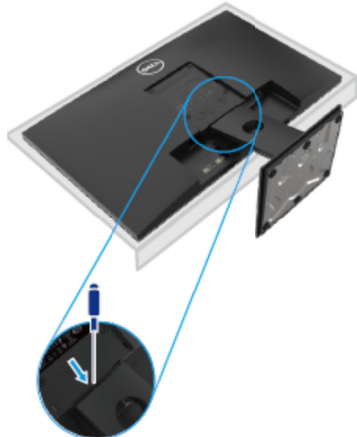
**S2** Place the monitor on a soft cloth along the desk.

Remove VESA cover to access the release button.

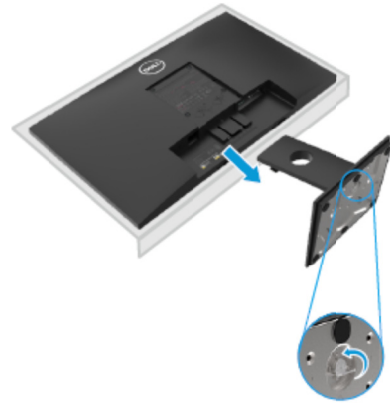


**S3** Use a long and thin screwdriver to push the release latch located in a hole just above the stand.

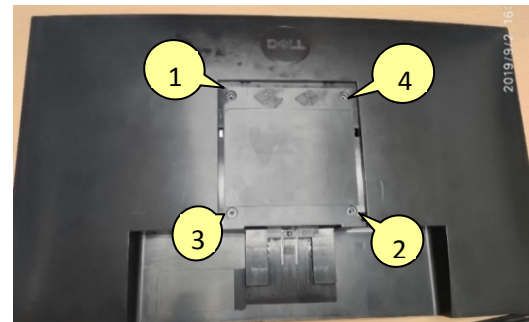
Once the latch is released, remove the base away from the monitor.



**S4** Press down on the quick release tab latch on the bottom of the base to separate base from stand column.



**S5** Unlock 4 screws on Rear Cover

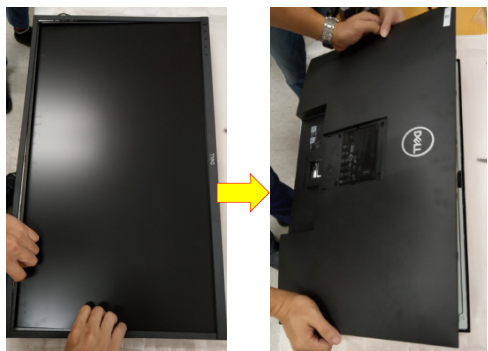
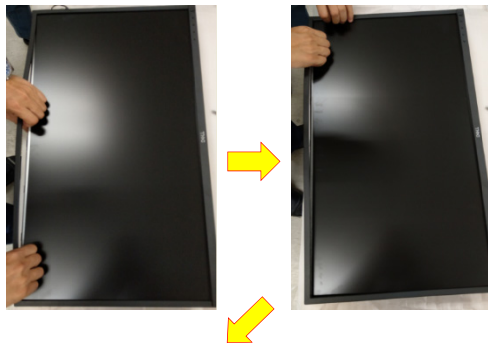
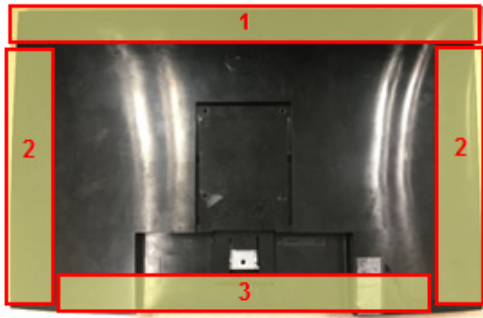


(Screw Torque: 8~10kgf)

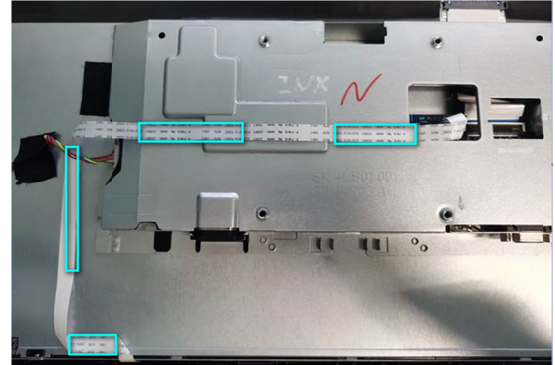
**S6** Disassemble Rear Cover from the monitor

Notice the disassembly order :

- 1) Disassemble the Top part
- 2) Disassemble the Left / Right part
- 3) Disassemble the Bottom part
- 4) Remove RC from Bezel



**S7** Remove Control BD FFC cable from I/F BD

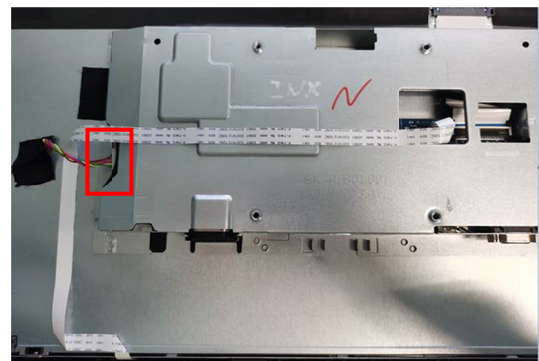
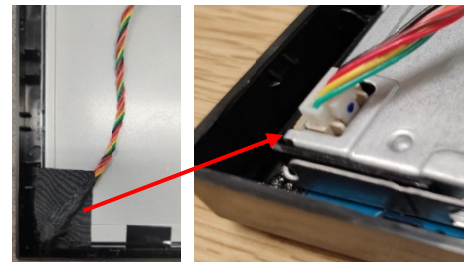


**S8** Remove a tape from backlight wire

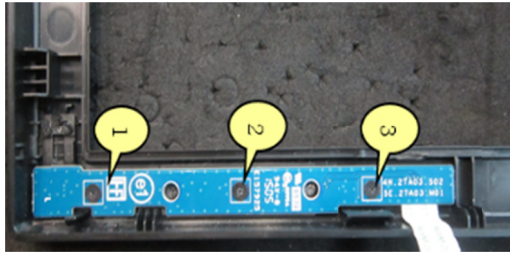
Remove backlight wire from panel and SPS BD

Remove LVDS cable from panel

Remove 2 tape from Main SHD and panel

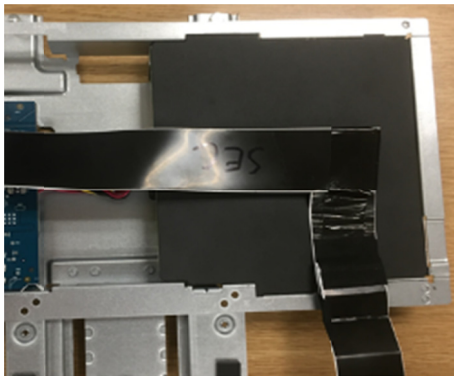


- S9** Disassemble Bezel from the panel  
 Unlock 3 screws on Control BD to take off Control BD from Bezel



(Screw Torque: 1.0 ~1.1kgf)

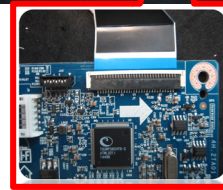
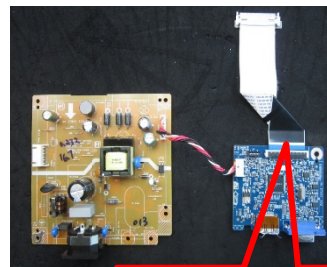
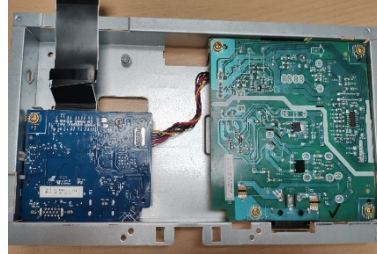
- S10** Disassemble Mylar from Main SHD



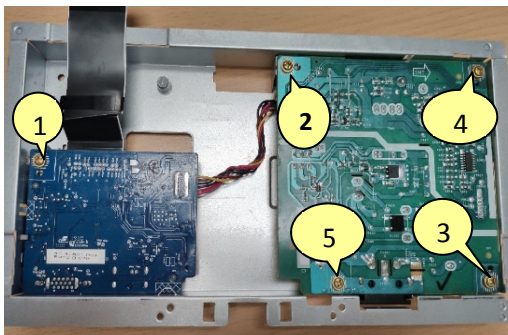
- S12** Disassemble SPS BD and I/F BD from Main SHD

Remove SPS wire from I/F BD

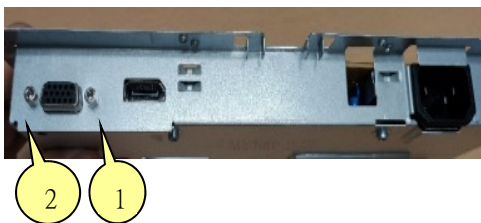
Remove LVDS cable from I/F BD



- S11** Unlock 5 PCBA screws and 2 hex screws



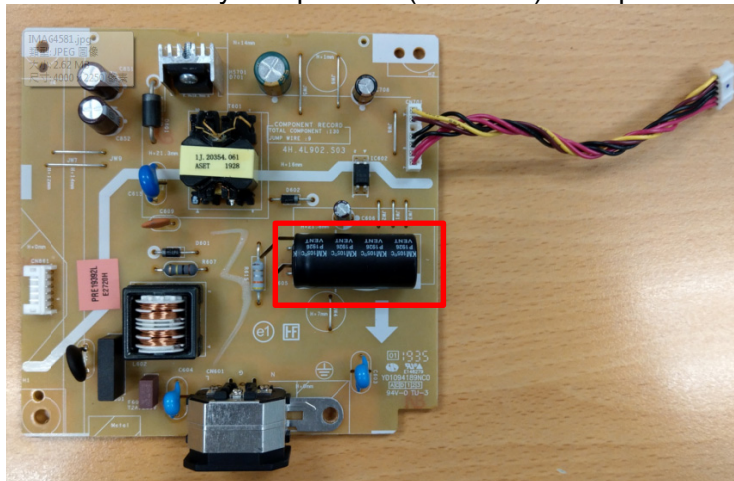
(Screw Torque: 6.5±1.0kgf)



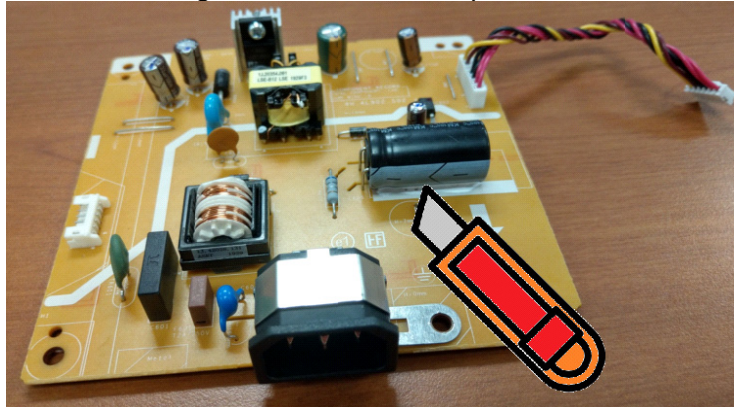
(Screw Torque: 5.0±0.6kgf)



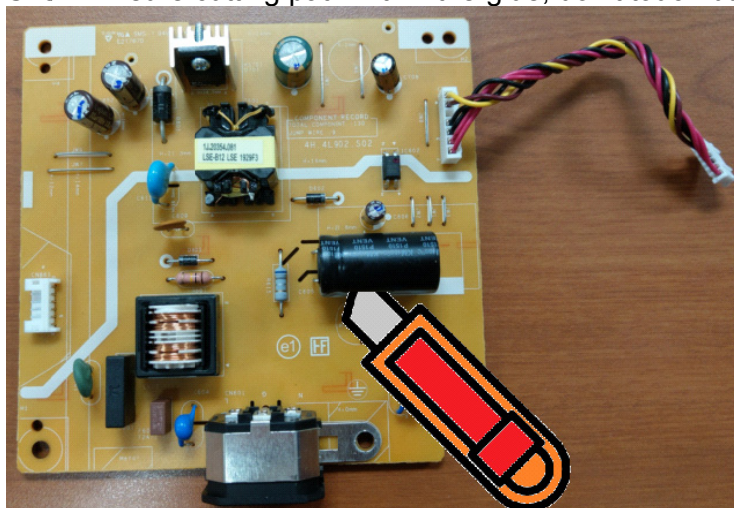
**S13** Remove electrolyte capacitors (red mark) from printed circuit boards



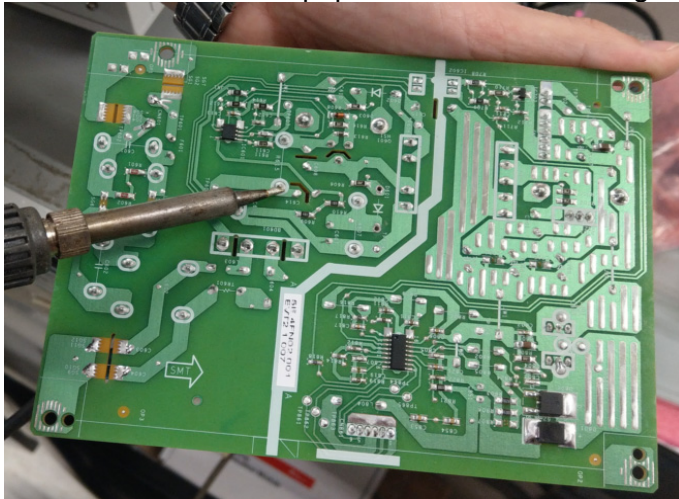
S13-1 Cut the glue between bulk cap. and PCB with a knife



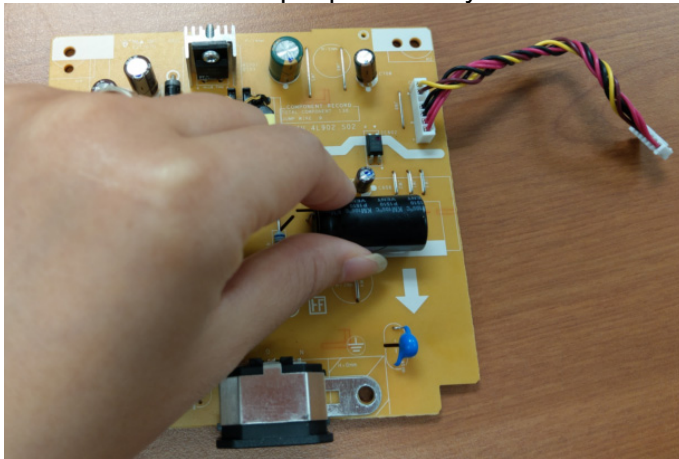
S13-2 Ensure cutting path within the glue, don't touch bulk cap. or PCB



S13-3 Take out bulk cap. pin solder with soldering iron and absorber



S13-4 Lift the bulk cap. up and away from the PCB



## 2. Product material information

The following substances, preparations, or components should be disposed of or recovered separately from other WEEE in compliance with Article 4 of EU Council Directive 75/442/EEC.

Capacitors / condensers (containing PCB/PCT)	No used
Mercury containing components	No used
Batteries	No used
Printed circuit boards (with a surface greater than 10 square cm)	Product has printed circuit boards (with a surface greater than 10 square cm)
Component contain toner, ink and liquids	No used
Plastic containing BFR	No used
Component and waste contain asbestos	No used
CRT	No used
Component contain CFC, HCFC, HFC and HC	No used
Gas discharge lamps	No used
LCD display > 100 cm <sup>2</sup>	Product has an LCD greater than 100 cm <sup>2</sup>
External electric cable	Product has external cables
Component contain refractory ceramic fibers	No used
Component contain radio-active substances	No used
Electrolyte capacitors (height > 25mm, diameter > 25mm)	Product has electrolyte capacitors (height >25mm, diameter > 25mm)

## 3. Tools Required

List the type and size of the tools that would typically can be used to disassemble the product to a point where components and materials requiring selective treatment can be removed.

Tool Description:

- Screwdriver
- Scraper Bar
- Penknife
- Soldering iron and absorber