

# Delock PCI Express x8 / x16 Card to 4 x internal NVMe M.2 Key M

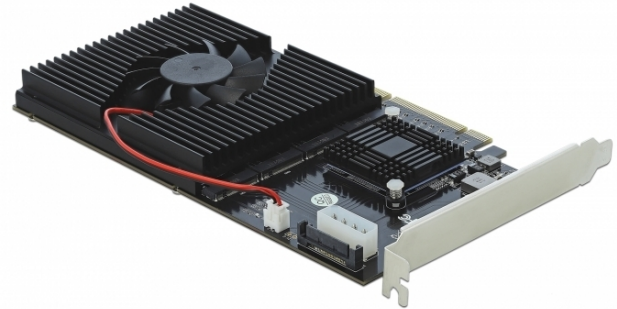
## Description

This PCI Express card by Delock expands the PC by **four M.2 slots**. Up to four M.2 SSDs in format 22110, 2280, 2260 and 2242 can be connected. With the help of the **large heat sink** and the fan, sufficient cooling of the M.2 modules is guaranteed.

### Delock M.2 PCIe card for gaming and server

Especially in the gaming and server range, this card is ideally suited to expand the existing system by four fast M.2 NVMe slots. All slots can be **used simultaneously**.

**M.2** NVMe



## Specification

- Connectors:
  - internal:
    - 1 x PCI Express x8 / x16, V3.0
    - 4 x 67 pin M.2 key M slot
    - 1 x SATA 15 pin power connector
    - 1 x Molex 4 pin power connector
    - 1 x 2 pin pin header for fan
- Chipset: Asmedia ASM2824
- Interface: PCIe
- Supports M.2 modules in format 22110, 2280, 2260 and 2242 with key M or key B+M based on PCIe
- Maximum height of the components on the module: 1.5 mm, application of double-sided assembled modules supported
- 4 x LED indicator
- Data transfer rate up to 32 Gbps
- Supports NVM Express (NVMe)
- Bootable, ex UEFI version 2.3.1
- Supports S.M.A.R.T.

## System requirements

- Linux Kernel 3.18.37 or above
- Windows 7/7-64/8.1/8.1-64/10/10-64
- PC with one free PCI Express x16 / x32 slot

## Package content

- PCI Express card
- Screwdriver
- M.2 mounting material
- Heat sink with fan
- 2 x thermal pad
- User manual

## Item no. 90409

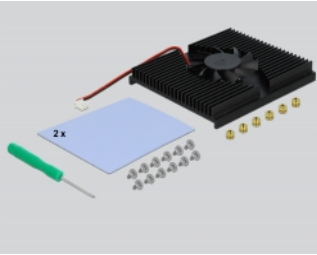
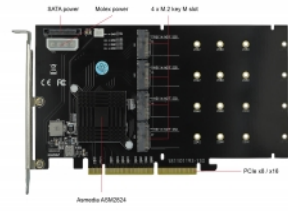
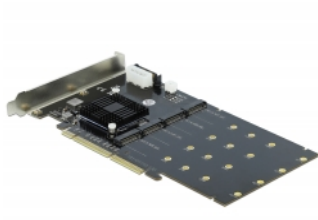
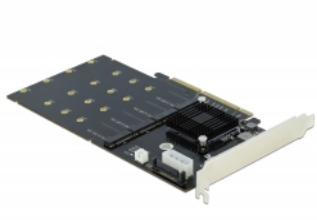
EAN: 4043619904099

Country of origin: China

Package: White Box



Images



General	
Function:	Bootable, ex UEFI 2.3.1
Supported operating system:	Windows 7 32-bit Windows 7 64-bit Windows 8.1 32-bit Windows 8.1 64-bit Windows 10 32-bit Windows 10 64-bit Linux Kernel 3.18.37 or above
Slot:	PCIe
Supported module:	M.2 modules in format 22110, 2280, 2260 and 2242 with key M or key B+M based on PCIe
Maximum height of the components on the module:	1.5 mm application of double-sided assembled modules supported
Interface	
Internal:	1 x SATA 15 pin power connector 4 x 67 pin M.2 key M slot 1 x PCI Express x16, V3.0 1 x PCI Express x8, V3.0 1 x 2 pin pin header for fan 1 x Molex 4 pin power connector
Technical characteristics	
Chipset:	Asmedia ASM2824
Physical characteristics	
Slot bracket:	standard