

### **LANCOM Management Cloud**

Automate the management of your network via a cloud-based platform.

### **Routers & SD-WAN**

Discover the market's most comprehensive portfolio for secure site networking & SD-WAN.

### **Switches**

Read more about the powerful basis for modern networks of all sizes here.

### **Service & Support**

Find customized LANCOM services for every challenge.

### **Remote & Mobile Access**

Learn here how to work securely in the office, at home, or on the road.

### **Unified Firewalls**

Learn more about state-of-the-art network security with LANCOM R&S® Unified Firewalls.

### **Wireless LAN**

Find out more about the access point portfolio for wireless network access.

### **LANacademy**

Gain specific know-how directly from the manufacturer.

# Product Overview

## 2024 / 2025



LANCOM, LANCOM Systems, LCOS, LANcommunity and Hyper Integration are registered trademarks. All other names or descriptions used may be trademarks or registered trademarks of their owners. This document contains statements relating to future products and their attributes. LANCOM Systems reserves the right to change these without notice. No liability for technical errors and / or omissions. 10/24

LANCOM Systems GmbH  
A Rohde & Schwarz Company  
Adenauerstr. 20/B2  
52146 Wuersele | Germany  
[info@lancom.de](mailto:info@lancom.de) | [lancom-systems.com](http://lancom-systems.com)

→ LANCOM Management Cloud

→ Routers & SD-WAN Gateways

→ Remote & Mobile Access

→ Unified Firewalls

→ Switches

→ Wireless LAN

→ Service & Support

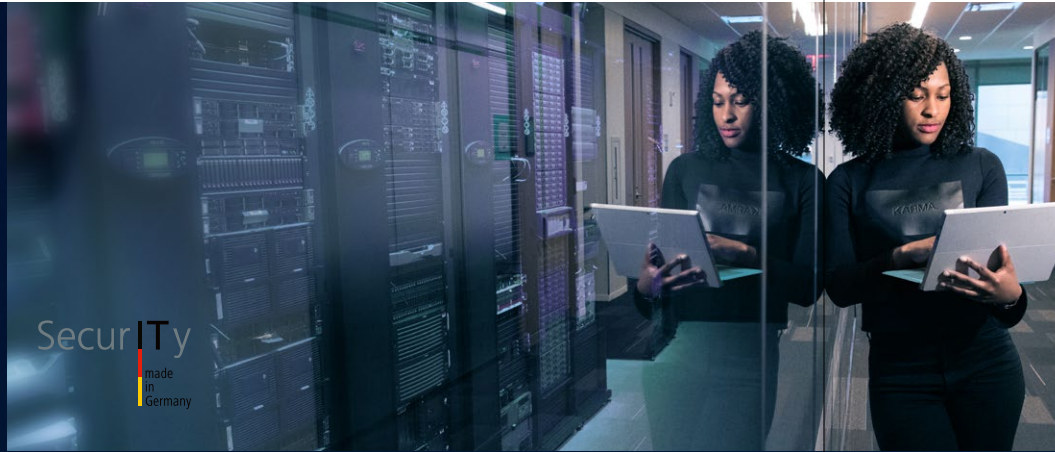
→ LANacademy



**LANCOM**  
SYSTEMS



**LANCOM**  
SYSTEMS



## Trusted Network Solutions

LANCOM Systems is a leading European manufacturer of secure, reliable, and future-proof networking and security solutions (WAN, LAN, Wi-Fi, firewalls, as well as Remote & Mobile Access) for business and administration. The company combines hardware business with virtual network components and cloud-based software-defined networking (SDN). The result is a unique portfolio of on-premises and cloud solutions with a central platform for SD-WAN, cloud-managed networks and security, as well as SD-Branch.

### Engineered in Germany

Software and hardware development as well as manufacturing take place mainly in Germany, and the same applies to the hosting of the network management. Particular attention is paid to providing trustworthy solutions with excellent security features. In addition, backdoor freedom is a key protective feature of the products. The trust mark "IT Security Made in Germany" and certifications by the German Federal Office for Information Security (BSI) confirm the trustworthiness and the outstanding level of security.

LANCOM Systems was founded in 2002 and is headquartered in Wuerselen near Aachen. Its customers include SMEs, public authorities, institutions, and large corporations from all over the world. Since summer 2018, the company has been a wholly owned subsidiary of the German technology group Rohde & Schwarz GmbH & Co.



## Table of Content

<b>Our Solutions</b>	04
<b>LANCOM Management Cloud</b>	06
<b>Routers &amp; SD-WAN Gateways</b>	10
LANCOM SD-WAN (VoIP) Gateways	12
Multi-WAN & Multi-Gigabit SD-WAN Gateways	16
SD-WAN Central Site Gateways & LANCOM vRouter	17
Industrial SD-WAN Gateway & Access Routers	18
Router Accessories	19
<b>Remote &amp; Mobile Access</b>	
LANCOM Trusted Access (LTA) Client	20
<b>Unified Firewalls</b>	
Desktop & Rack Unified Firewalls	22
Firewall UTM Features, Licenses & Accessories	24
<b>Switches</b>	
Core Switch	26
Aggregation Switches & Enterprise Accessories	28
Stackable Enterprise-class Access Switches	30
SME- & Industrial-class Access Switches	32
Unmanaged Switches & Switch Accessories	36
<b>Wireless LAN</b>	
LANCOM Wi-Fi 7 & Wi-Fi 7 Indoor Access Points	38
Wi-Fi 6E & Wi-Fi 6 Indoor Access Points	40
Outdoor & Industrial Access Points	42
WLAN Controllers & Wi-Fi Accessories	44
<b>Software Options</b>	46
<b>Service &amp; Support (Services &amp; LANcare)</b>	48
<b>Training (LANacademy)</b>	50

## We Digitize Trust.

Digital sovereignty – in other words, the ability to act securely and autonomously in the digital world – is becoming increasingly important for companies. A better understanding of your networks leads to wiser decisions regarding your actual demands.

No matter what your network requirements are, we are your reliable partner for a wide range of network solutions, supporting you in implementing and strengthening your digital sovereignty.



### LANCOM InfoHub App Always and everywhere at hand!

The digital “network guide to go” supports you with use cases, product recommendations, and tips to enhance your digital sovereignty when choosing the right solutions for your specific network requirements.

Download now to your smartphone:  
[www.lancom-systems.com/solutions/lancom-infohub-app](http://www.lancom-systems.com/solutions/lancom-infohub-app)

#### Digital sovereignty

- Trustworthy, secure IT infrastructures
- Securing technological expertise in Europe
- Resilience, autonomy, sustainability, and integrity

#### Site networking

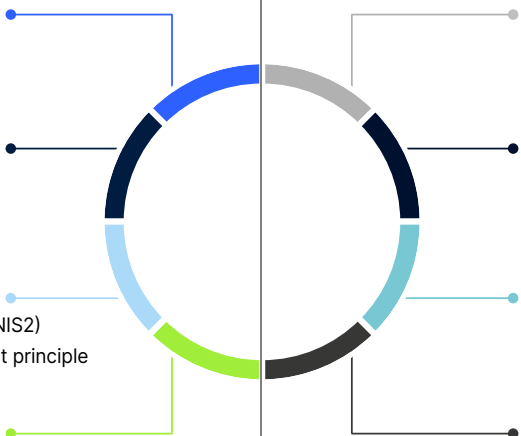
- Secure and reliable campus and branch networking
- High-performance LAN and Wi-Fi infrastructures
- Software-defined WAN networks (incl. SD-Branch)

#### Network security

- Protection of your own IT network (in accordance with NIS2)
- Transformation from perimeter security to the Zero Trust principle
- Secure integration of remote / mobile office

#### Network management

- Automated and intelligent control of the IT network
- Cloud-based management platform, hosted in Germany
- Highest information security incl. ISO / IEC 27001 certification



#### Public services / education

- Sustainable and comprehensive digitalization of administration and schools (public sector)

#### Retail / branches and stores

- Smart, secure, and scalable solutions for the deployment, operation, and management of IT networks for retailers and chain stores

#### Healthcare

- Secure, legally compliant IT infrastructures in the healthcare sector for nursing, patient care, and monitoring

#### Small and medium-sized enterprises (SME)

- From one SME to another – tailor-made solutions for the challenges of digital transformation

### Determine your own digital sovereignty now!

If you want to change something, you should first know your starting position. Take the test and compare your status with industry-wide benchmarks!

More at: [www.lancom-systems.com/company/digital-sovereignty](http://www.lancom-systems.com/company/digital-sovereignty)

### Network solutions & technologies simply explained

On the topic websites you will find practical information material including best practices for IT networks in every industry!

Find out more about LANCOM solutions: [www.lancom-systems.com/solutions](http://www.lancom-systems.com/solutions) or the latest technologies, e.g. Wi-Fi 7: [www.lancom-systems.com/technology](http://www.lancom-systems.com/technology)

## LANCOM Management Cloud (LMC)

A fully functional network is the heart of any business. Building it up and controlling it, however, can be time-consuming and error-prone. In an IT world with increasing complexity and a widespread shortage of skilled workers, what your network needs is a **reliable and secure control center**:

- A solution that automates and optimizes the entire network operation, scalable to any size.
- A system that implements and monitors security policies and compliance requirements, including NIS2 guidelines.
- A platform that sustainably reduces complexity and operating costs, enabling scalable, future-proof network management.

**Become a network designer and control your network dynamically** in the areas of WAN, LAN, WLAN, Remote Access, and Security via a single cloud-based platform – as automated as you like!

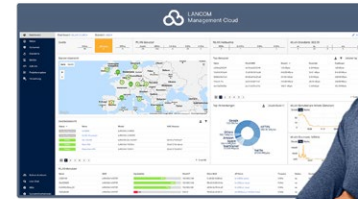
### Smart device management with intelligent update logic – automated and 100% reliable!

Plan your firmware updates and configuration rollouts conveniently in advance and let the LMC carry them out in defined maintenance windows. With comprehensive progress reports and warning messages, you always have a complete overview!



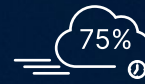
More at:  
[www.lancom-systems.com/cloud](http://www.lancom-systems.com/cloud)

We invest in IT security and quality: The LMC is certified in accordance with ISO / IEC 27001.



## Highlights of the LANCOM Management Cloud

Business success is largely dependent on a high-performance and, above all, secure network infrastructure. The LMC supports you in preparing for the future in the long term:



### Maximum productivity – on average 75 % time savings!

- Out-of-the-box solution for all LANCOM components: gateways, routers, Unified Firewalls, switches, and access points
- Easily scalable connection of locations, home offices, and remote workers
- Practical switch port templates incl. stacking
- Firmware inventory incl. scheduling



### More performance & trustworthy security

- Auto-Config, Auto-VPN, and Auto-VLAN
- Cloud-managed security & secure network access
- Dashboards with 24/7 monitoring, anomaly detection, and building floor plans
- Geo-redundant hosting only in German data centers according to ISO 27001
- Integration service for Security Information and Event Management (SIEM) systems



### Immediate return on investment

- Zero-touch commissioning and remote troubleshooting at any time – without expensive on-site visits
- Fast network provisioning (cloud-managed hotspots)
- Self-learning Wi-Fi automation solution  
LANCOM Active Radio Control 2.0



## LANCOM Active Radio Control 2.0 (ARC)

### Optimize Wi-Fi at the push of a button

Network administrators are faced with the challenge of configuring Wi-Fi networks in such a way that availability and capacity are guaranteed at all times. Channel conflicts, incorrect transmission power, or interference from external networks often lead to considerable capacity losses.

LANCOM Active Radio Control 2.0 is the answer to ever more complex networks with increasing cost pressure and a shortage of IT specialists!

### The self-learning automation solution optimizes Wi-Fi installations

based on real usage data, minimizes the workload for IT administrators, and thus ensures the best possible user experience – from office, hotel, or hospital Wi-Fi to large installations in stadiums and arenas; for effortless Radio Resource Management (RRM).

#### Your advantages with ARC 2.0 at a glance

- Risk-free advance forecast of optimization measures
- Self-learning optimization automation of channel distribution, transmission power, and channel widths with consideration of the individual workload
- No additional costs due to integration in the LMC

→ **Reduced costs by up to 99% for Wi-Fi setup and optimization!**

More at:  
[www.lancom-systems.com/arc20](http://www.lancom-systems.com/arc20)

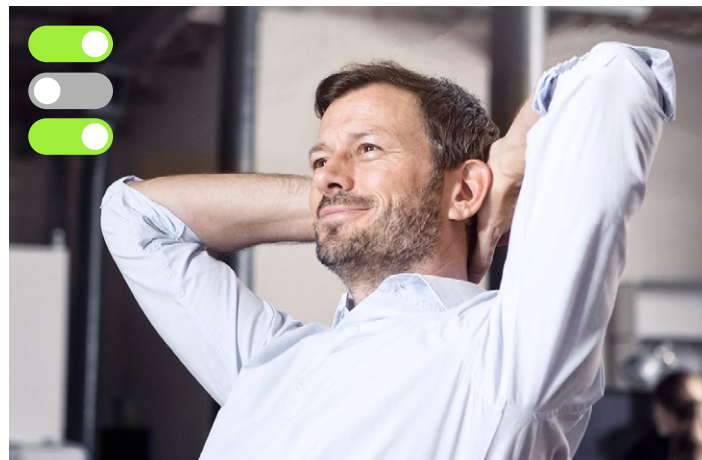
## LANCOM Active Power Control (APC)



### Clever energy saving without risk

In view of rising energy costs and a growing awareness of sustainable solutions, LANCOM Active Power Control will perfectly complement and optimize your network!

**The dynamic energy-saving solution reduces the energy consumption** of your Wi-Fi infrastructure by automatically adapting to actual network requirements – without compromising operational reliability or Wi-Fi quality! With the LANCOM Sustainability Mode, the actual consumption per Ethernet port is measured directly at the Wi-Fi 7 access point, and the PSU and PoE power requirements are reduced through automatic function adjustment during idle phases. At the same time, centralized energy monitoring provides full transparency of energy consumption – allowing you to work not only more efficiently but also more sustainably.



#### Outlook on your advantages with APC

- Intelligent energy management including consumption monitoring and reporting for the entire network – per project, site, and cloud-managed LANCOM devices
- Energy savings and CO<sub>2</sub> reduction through operating system-based chipset functions in Wi-Fi 7 access points

→ **Reduced energy consumption in Wi-Fi networks**

## SD-WAN

SD-WAN replaces traditional, manually configured networks with fixed MPLS lines with automated provisioning and site configurations via Internet-based wide area networks (WAN).

Nevertheless, WAN networking and IT integration of modern cloud applications still present companies with major challenges. Our solution for your modern site networking is clear:

### LANCOM SD-WAN – for secure and automated networking!



#### Speed & availability

- Increased bandwidth with parallel use of lines
- Highly available Internet connection with 4G / 5G backups



#### Management & automation

- Centralized network management (WAN, LAN, WLAN, Remote Access, and Security) via a single cloud-based platform (LANCOM Management Cloud)
- Remote troubleshooting with 24/7 monitoring
- Zero-touch deployment of new sites



#### Reduced costs & more efficiency

- One-box solutions with a variety of interfaces
- Elimination of expensive field service assignments



#### Safety & reliability

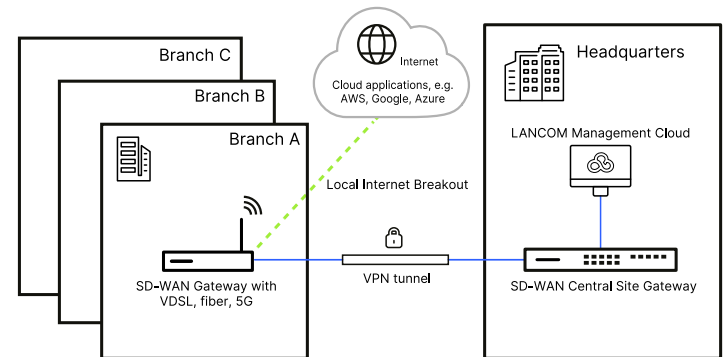
- GDPR-compliant, NIS2-compliant, and BSI-tested products and solutions “Engineered in Germany” and in accordance with the highest European security standards
- Trustworthy anti-backdoor policy to strengthen digital sovereignty

**Switch to LANCOM SD-WAN now** and design your scalable, efficient, and secure network with us!

More at: [www.lancom-systems.com/sd-wan](http://www.lancom-systems.com/sd-wan)



### Your LANCOM SD-WAN can look this simple



### For transparent security and higher consumer protection

The IT Security Label is awarded to digital products for which manufacturers or service providers have guaranteed compliance with the security requirements of the German Federal Office for Information Security (BSI).

LANCOM is the **first manufacturer of broadband routers** to be allowed to label a range of products with the IT Security Label!

More at: [www.lancom-systems.com/bsi-it-security-label](http://www.lancom-systems.com/bsi-it-security-label)

# LANCOM 1800 blackline Series

## Sophisticated technology meets trending design

How do you combine high performance with a modern look and sustainable production at the same time? With the LANCOM 1800 blackline – the housing of our new 1800 series SD-WAN gateways. This modern, black, and elegant design encapsulates our many years of experience in reliable site networking.



83%

higher volume cooling flow and thus quieter ventilation noise



71%

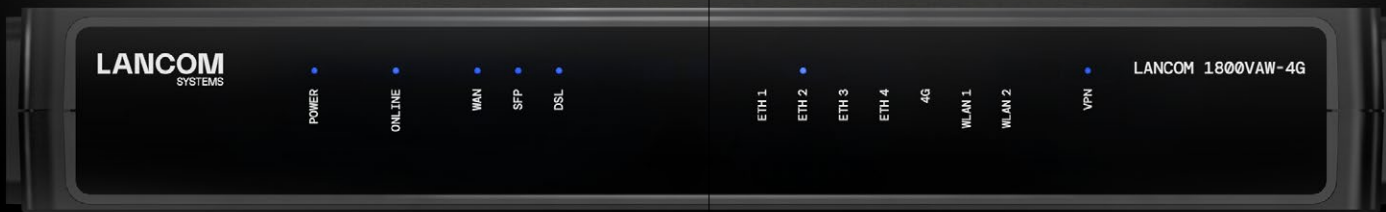
reduced CO<sup>2</sup> emissions due to shorter transport routes



80%

savings in paper documentation

Compared to the classic LANCOM CPE housing



Pioneering technology



Clear design



Local production



Recycling-optimized design



Reduced noise emissions



Ecological packaging

New

### LANCOM 1800VA / 1800VA-4G / 1800VA-5G

- Integrated VDSL Supervectoring modem for up to 300 Mbps
- High-speed Internet via fiber-optics (GPON and AON modules available separately) and Gigabit Ethernet for connecting external modems
- 5 integrated IPSec VPN channels (opt. 25)
- **LANCOM 1800VA-4G** additionally with 4G modem for up to 300 Mbps LTE Advanced
- **LANCOM 1800VA-5G** additionally with 5G modem for 4G / 5G primary operation or in active / active mode in parallel with other Internet lines



Find out more at:  
[www.lancom-systems.com/blackline](http://www.lancom-systems.com/blackline)

Further information on all LANCOM SD-WAN gateways can be found at:  
[www.lancom-systems.com/products/routers-sd-wan](http://www.lancom-systems.com/products/routers-sd-wan)

### LANCOM 1800VAW / 1800VAW-4G

- Like LANCOM 1800VA, additionally with dual-band concurrent Wi-Fi 6 with up to 1,200 Mbps at 5 GHz and up to 575 Mbps at 2.4 GHz
- **LANCOM 1800VAW-4G** additionally with 4G modem for up to 300 Mbps LTE Advanced



New

### LANCOM 1800EFW-5G

- High-speed Internet via fiber-optics (GPON and AON modules available separately) and Gigabit Ethernet for connecting external modems
- Integrated 5G modem for 4G / 5G primary operation or in active / active mode in parallel with other Internet lines
- Dual-band concurrent Wi-Fi 6
- 5 integrated IPSec VPN channels (opt. 25)

## SD-WAN VoIP Gateways of the LANCOM 1800 blackline Series

These VoIP gateways are the ideal migration solution for the use of analog, ISDN, and VoIP end devices on an All-IP line connection in small and medium-sized network infrastructures. Telephony functions, such as LANCOM VCM (Voice Call Manager) and SBC (Session Border Controller), are integrated in all VoIP devices.



New

### LANCOM 1803VA / 1803VA-4G / 1803VA-5G / 1803VAW / 1803VAW-5G

- Like LANCOM 1800VA, additionally with professional telephony functions (VCM & SBC)
- Continued use of existing ISDN and analog components via 2x ISDN S0 (NT) for point-to-point or multipoint line configuration, 2x analog (internal) / fax
- **LANCOM 1803VA-4G** additionally with 4G modem for up to 300 Mbps LTE Advanced
- **LANCOM 1803VA-5G** additionally with 5G modem
- **LANCOM 1803VAW** additionally with dual-band concurrent Wi-Fi 6
- **LANCOM 1803VAW-5G** additionally with dual-band concurrent Wi-Fi 6 and 5G modem



## SD-WAN Gateways of the 1800EF Series

As a small or medium-sized company, your focus is on a reliable fiber-optics network with a secure connection to branch offices, employees, or service providers? With the LANCOM SD-WAN gateways in classic CPE housing, you can rely on fast broadband Internet for a secure SD-WAN infrastructure.

### LANCOM 1800EF

- High-speed Internet via fiber-optics (GPON and AON modules available separately) and Gigabit Ethernet for connecting external modems
- 5 integrated IPsec VPN channels (opt. 25)



New

### LANCOM 1800EF-4G

- Like LANCOM 1800EF, additionally with 4G modem for up to 300 Mbps LTE Advanced for intelligent backup scenarios and more reliability



### LANCOM 1800EF-5G

- Like LANCOM 1800EF, additionally with 5G modem for low latency and high bandwidth for real-time applications



### LANCOM 1800EFW

- Like LANCOM 1800EF, additionally with dual-band concurrent Wi-Fi 6 with up to 1,200 Mbps at 5 GHz and up to 575 Mbps at 2.4 GHz



### LANCOM vRouter as Virtual CPE (vCPE)

- Software-based router for operation in a virtualized environment
- Licenses for LANCOM vRouter 50 and vRouter 250

vRouter

### Find your ideal router!

Simply answer the questions of the LANCOM Router Matchmaker at:

[www.lancom-systems.com/router-matchmaker](http://www.lancom-systems.com/router-matchmaker)



## Multi-WAN SD-WAN Gateways

Large multi-site SD-WAN network infrastructures require efficient use of all available lines at the site to efficiently manage modern, data-intensive applications.

### LANCOM 1926VAG / 1926VAG-4G / New 1936VAG-5G

- 2x VDSL Supervectoring for parallel use or 1x G.fast, 2x Gigabit Ethernet, and 1x SFP / TP fiber-optics, load balancing for ideal load distribution and increased bandwidth
- Integrated telephony functions (VCM / SBC) and 2 ISDN interfaces (NT), as well as 4 analog interfaces
- 25 IPSec VPN connections (opt. 100)
- **LANCOM 1926VAG-4G** additionally with Dual-SIM LTE Advanced for up to 300 Mbps
- **LANCOM 1936VAG-5G** additionally with integrated Dual-SIM 5G modem for 4G / 5G primary operation or in active / active mode in parallel with other Internet lines



New

### LANCOM 1930EF / 1930EF-5G

- 2x Gigabit Ethernet & 1x SFP / TP fiber-optics
- Load balancing and telephony functions
- 25 IPSec VPN connections (opt. 100)
- **LANCOM 1930EF-5G** additionally with integrated Dual-SIM 5G modem



## Multi-Gigabit SD-WAN Gateway

Modern 10G-capable broadband networks require gateways that support XGS-PON fiber-optic technology via a transceiver module.

New

### LANCOM 2100EF

- Multi-Gigabit high-speed Internet via fiber-optics with 2x 10G SFP+
- 4x 2.5 Gigabit Ethernet for connecting network components with high-performance requirements
- Integrated telephony functions
- 25 IPSec VPN connections (opt. 100)



## SD-WAN Central Site Gateways

Large multi-service IP networks require performance and reliability in the headquarters. The ISG series forms the secure and high-performance core of your SD-WAN enterprise network.

### LANCOM ISG-8000

- 2x 10G SFP+ and 8x Gigabit Ethernet
- 250 IPSec VPN connections (opt. up to 3,000)
- Network virtualization with up to 256 networks (ARF)



### LANCOM ISG-5000

- 2x 10G SFP+ and 6x Gigabit Ethernet
- 100 IPSec VPN connections (opt. up to 1,000)
- Network virtualization with up to 256 networks (ARF)



**vRouter**

### Software-based performance: LANCOM vRouter

Whether as a virtual branch router (vCPE), central gateway (vGateway), or WLAN controller (vWLC): The LANCOM vRouter gives you maximum flexibility in terms of network size and performance requirements for operation with VMware ESXi, Amazon Web Services (AWS), Microsoft Hyper-V, or Microsoft Azure.

You can find variants at: [www.lancom-systems.com/vrouter](http://www.lancom-systems.com/vrouter)

## Industrial SD-WAN Gateway

SD-WAN gateways with a robust housing are ideal for harsh, demanding industrial environments.

### LANCOM IAP-5G

- 5G modem for low latency and high bandwidths
- IP50 all-metal protective housing
- Reliable in adverse temperatures (-20 °C to +50 °C)
- 5 IPsec VPN connections (opt. 25)
- Power supply via PoE according to 802.3at or power supply unit (PSU)



## Network Extensions

These flexibly deployable access routers and modules ensure reliable Internet access.

### LANCOM 750-5G

- Operation as a freely positionable 5G network extension or as a stand-alone 5G router
- Easily connects to LANCOM router or switch
- Power supply via PoE according to 802.3af or PSU



### LANCOM 730-4G+

- Operation as a 4G network extension or as a backup with LTE Advanced for up to 300 Mbps
- Power supply via PoE according to 802.3af or PSU



New

### LANCOM 1650E

- Gigabit Ethernet for any external DSL, cable, and fiber-optics modems
- 3 IPsec VPN connections



### Bidirectional fiber-optic transceiver modules

- LANCOM SFP-AON-1 for active fiber-optics lines (FTTH, AON)
- LANCOM SFP-GPON-1 for passive fiber-optics lines (GPON)



New

- LANCOM SFP-AON-10 for 10G support in active fiber-optics lines
- LANCOM SFP-XGSPON-1 for passive 10G fiber-optics lines (XGS-PON)

You can find more transceiver modules at: [www.lancom-systems.com/transceiver-modules](http://www.lancom-systems.com/transceiver-modules)

## Router Accessories

With these precisely fitting accessories, you can simplify the installation of devices or expand the functional scope of your LANCOM hardware according to your individual requirements.

### LANCOM CPE blackline Rack Mount (Plus)

- Mounting bracket for LANCOM gateways in blackline housing in 19" racks
- Plus version with additional front-facing connections



### LANCOM Rack Mount (Plus)

- Mounting bracket for LANCOM devices in classic CPE housing in 19" racks
- Plus version with additional front-facing connections



### LANCOM Wall Mount (White / Rail)

- Sturdy wall mount for LANCOM devices in classic CPE housing
- Theft-proof installation thanks to padlock
- Classic and white color variants available
- Rail variant for mounting on top-hat rails



### AirLancer I-360D-5G

- Indoor 4G / 5G mobile antenna with 360° radiation angle and 2x2 MIMO for higher data rates and better signal quality
- Supports all 4G and 5G bands from 700 to 3,800 MHz
- Ideally connects to LANCOM indoor 4G cellular routers in 4G networks



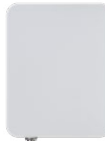
### AirLancer O-360D-5G

- Like AirLancer I-360D-5G, incl. mounting material for wall and pole mounting in outdoor areas

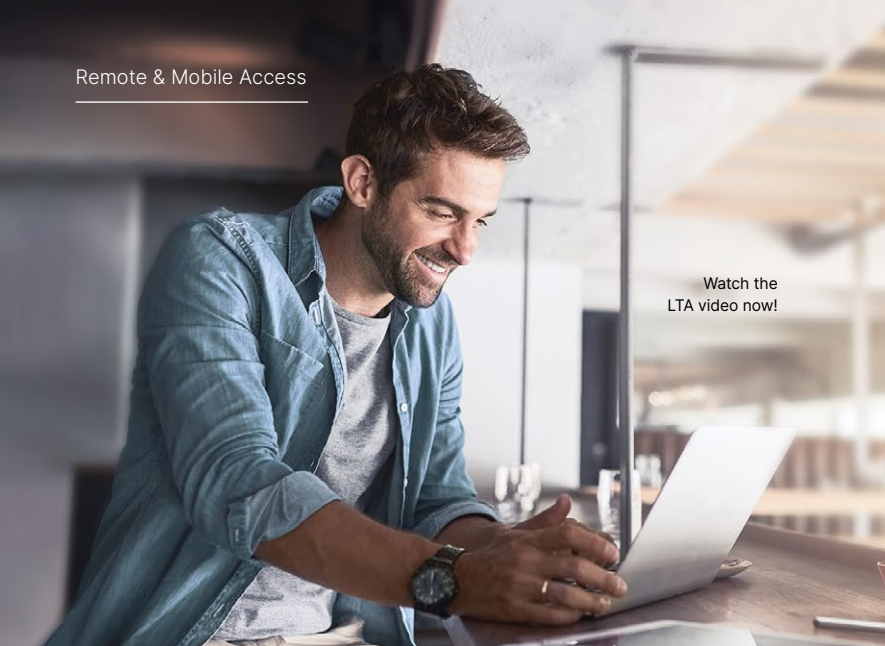


### AirLancer O-360Q-5G

- Outdoor 5G mobile antenna with 360° radiation angle and 4x4 MIMO for maximum 5G performance
- Ideally connects to LANCOM 5G indoor cellular routers



You can find out more about 5G technology at: [www.lancom-systems.com/technology/what-is-5g](http://www.lancom-systems.com/technology/what-is-5g)



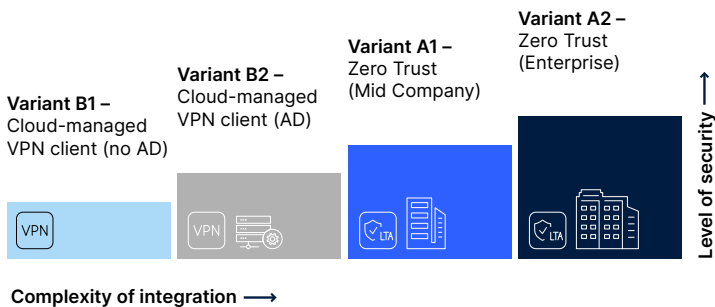
Watch the LTA video now!

## LANCOM Trusted Access

**Modern remote access – as simple, scalable, and secure as never before.**

LANCOM Trusted Access (LTA) is the highly scalable network access security solution for corporate networks. It enables secure and reliable access to corporate resources for employees in the office, at home, or on the road, protecting modern hybrid working from anywhere, anytime.

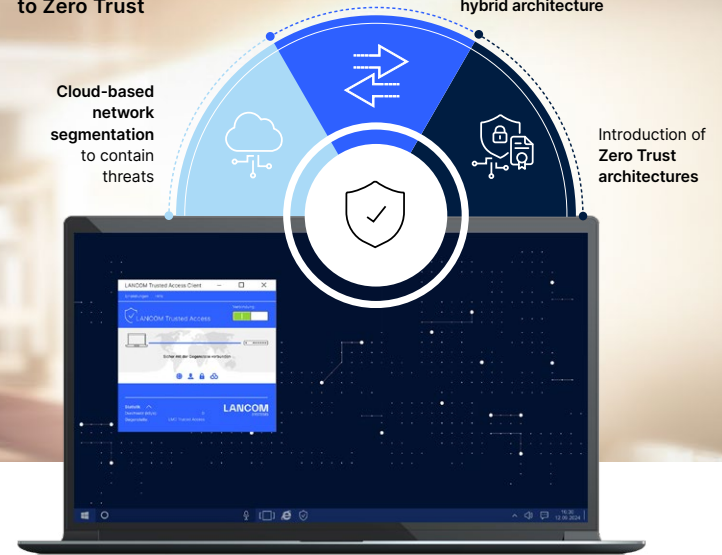
Discover the right level of LANCOM Trusted Access for you – from cloud-managed VPN client without Active Directory connection to intermediate levels up to complete Zero Trust implementation with granular access controls!



More at: [www.lancom-systems.com/products/remote-mobile-access/lancom-trusted-access-client](http://www.lancom-systems.com/products/remote-mobile-access/lancom-trusted-access-client)

**From perimeter security to Zero Trust**

**Securing transitions in a hybrid architecture**



**100 % digital sovereignty – 100 % GDPR-compliant!**

Everything you need to implement a LANCOM Trusted Access system architecture:

- LANCOM Trusted Access Client (LTA Client) as software on the end devices
- Trusted Access controller (LANCOM Management Cloud)
- Trusted Access gateway (VPN-capable LANCOM router or firewall)

**Onboarding with free tutorial access and trial version!**

It is our pleasure to assist you with the implementation of LANCOM Trusted Access (LTA)! The onboarding program supports you in the seamless integration of LTA into your networks.

By answering the questionnaire, you can determine your optimum LTA integration level. Customized tutorial videos and a 30-day trial version are then waiting for you!

More at: [www.lancom-systems.com/ita-onboarding](http://www.lancom-systems.com/ita-onboarding)

## Desktop Unified Firewalls

**Small and medium-sized enterprises (SMEs)** are increasingly becoming the target of cyber attacks. That's why multi-layered, trustworthy threat protection from LANCOM R&S® Unified Firewalls is essential – uncomplicated and tailored to your requirements. Rely on state-of-the-art security technologies and Unified Threat Management (UTM) “Engineered in Germany” as well as full VPN functionality.

### LANCOM R&S® UF-60 LTE / UF-60 / UF-160 / UF-260

- Ideal for small and medium-sized networks or individual locations with low to medium data volumes
- **UF-60 LTE** additionally with LTE Advanced



### LANCOM R&S® UF-T60

- Robust housing, especially for industrial locations in harsh industrial environments

	UF-T60	UF-60 / UF-60 LTE	UF-160	UF-260
<b>Ports</b>	5x GE copper, 2x SFP	4x GE copper	4x GE copper	4x GE copper, 1x SFP
<b>Firewall throughput TCP (Mbps)</b>	3,700	3,500	3,550	4,450
<b>VPN throughput IPSec (Mbps)</b>	1,200	790	1,200	1,500
<b>UTM throughput HTTPS (Mbps)</b>	200	150	170	340

### Find the right firewall for you!

Either answer the questions of the LANCOM Firewall Matchmaker at:

[www.lancom-systems.com/firewall-matchmaker](http://www.lancom-systems.com/firewall-matchmaker)

Or ask your individual questions directly to the AI-based digital assistant – at any time, quickly, and easily. You are welcome to test it directly. We look forward to your questions and feedback!

## Rack Unified Firewalls

**Growing, distributed enterprises** in particular need powerful firewalls in their headquarters. The same applies to educational institutions with demanding networks and uneven data volumes. The future-proof rack models of the LANCOM R&S® Unified Firewalls therefore combine maximum performance and VPN functionality with a holistic UTM security solution “Engineered in Germany”.

### LANCOM R&S® UF-360 / UF-760 / UF-1060

- Ideal for larger networks with high data volumes
- **UF-1060** with up to 100G interface and 10G UTM performance



New

	UF-360	UF-760	UF-1060
<b>Ports</b>	6x GE copper, 2x SFP+	8x GE copper, 2x SFP+	2x GE copper
<b>Opt. extension modules</b>	1G ETH, 1G SFP, 10G SFP+	1G ETH, 1G SFP, 10G SFP+, 40G QSFP+	1G ETH, 1G SFP, 10G SFP+, 40G QSFP+, <span style="border: 1px solid black; padding: 2px;">New</span> 100G QSFP28
<b>IDS / IPS throughput HTTPS (Mbps)</b>	1,400	13,000	20,000
<b>Firewall throughput TCP (Mbps)</b>	11,600	49,830	100,000
<b>VPN throughput IPSec (Mbps)</b>	2,200	19,700	40,000
<b>UTM throughput HTTPS (Mbps)</b>	420	3,400	12,000

**vFirewall**

### Software-based security with Virtual Unified Firewalls

Used in cloud scenarios or classic networks of any size, the Virtual Unified Firewalls, aka LANCOM vFirewalls, offer the same level of security and functionality as the LANCOM R&S® Unified Firewalls – without the need to install classic hardware. Operation is simple in a virtualized environment based on a hypervisor, such as VMware ESXi, Oracle VirtualBox, Microsoft Hyper-V, or KVM. The flexible license model allows your vFirewall to simply “grow” with you.

You can find variants at: [www.lancom-systems.com/vfirewall](http://www.lancom-systems.com/vfirewall)

## Firewall UTM Features

Unified Threat Management (UTM) combines standard security mechanisms with the latest generation of technologies. Our security promise to you is very simple: in the triad of security, compliance, and usability, the effective protection of your network is our top priority!

### Top 5 UTM highlights



Control over applications and content with Application Management & R&S@PACE 2 Deep Packet Inspection (DPI) engine



Database-based protection against known threats with Intrusion Detection and Prevention System (IDS / IPS)



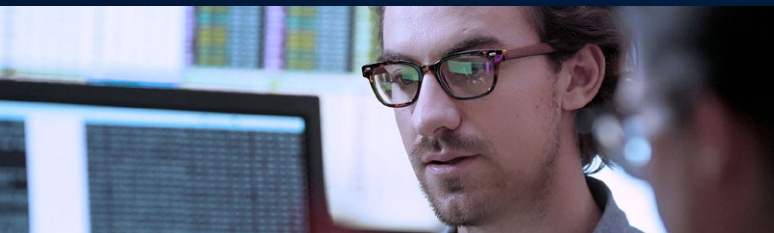
Preventive security against unknown threats with cloud-based Sandboxing and Machine Learning (Anti Virus)



Protection against phishing attacks with DNS Web Filter and Content Filter as well as HTTP(S) proxy (Secure Web Gateway, SWG)



User-based rules and network separation with network segmentation (VLAN)



### Central management and monitoring tools

→ **Graphical web interface** for the configuration of individual firewalls

→ **LANCOM Management Cloud** for the creation and automated rollout of security rules for many firewalls at several locations simultaneously thanks to the “One-Click Security” concept – based on industry-leading cybersecurity technology!



## Flexible Firewall License Model

A valid license is required to operate the LANCOM R&S@Unified Firewalls and LANCOM vFirewalls. You can choose the scope of functions (Basic or Full) and the license term (1, 3, or 5 years).

### LANCOM License **UF Basic**

Activates the firewall functions and offers free support and firmware updates

### LANCOM License **UF Full**

Supplements the LANCOM UF Basic License with complete UTM and VPN functions as well as a Content Filter

## Firewall Accessories



### LANCOM Firewall Extension Modules

- Flexible port extension for Unified Firewalls
- With various connections for fast fiber-optics networking or as a copper-bound Ethernet port (1 GE, 1G SFP, 10G SFP+, or 40G QSFP+ with 2, 4, or 8 ports per module)

### LANCOM Transceiver Modules

- Flexible use in switches, gateways, and Unified Firewalls with integrated SFP ports
- For (bidirectional) fiber-optics networking or as a copper-bound Ethernet port
- Also available in bulk or as LANCOM Direct Attach Cable



### LANCOM SPSU UF-760

- 300 watts hot-swappable power supply unit for maximum reliability of the LANCOM R&S@UF-760



### LANCOM Firewall Rack Mount

- Stable mounting brackets for the desktop models of the LANCOM R&S@Unified Firewalls in 19” racks

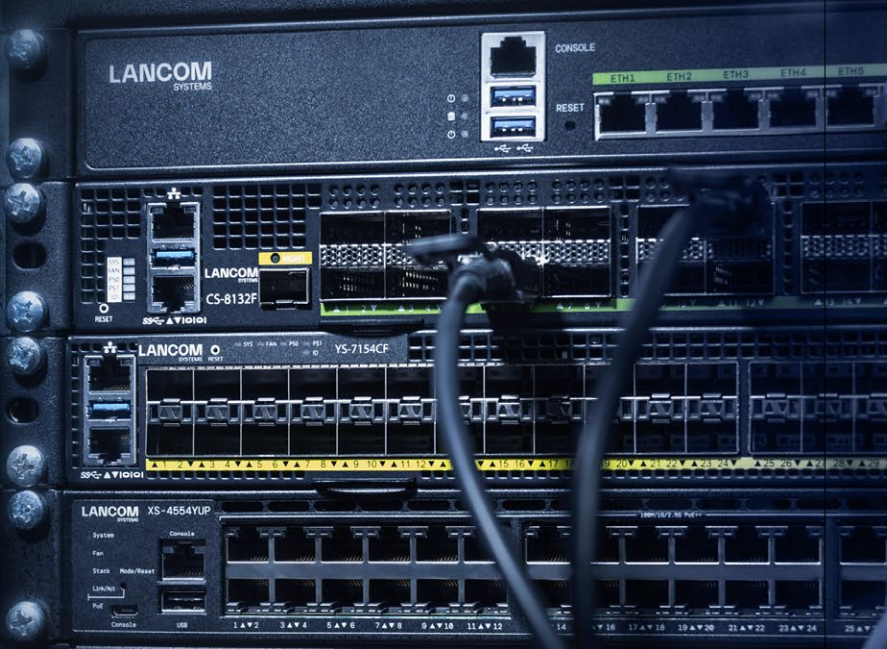


Further information on all security products and compatible expansion and transceiver modules for your device can be found at: [www.lancom-systems.com/products/security](http://www.lancom-systems.com/products/security)

## Time to Switch

Three-tier switch networks. From access to core – 100 % LANCOM.

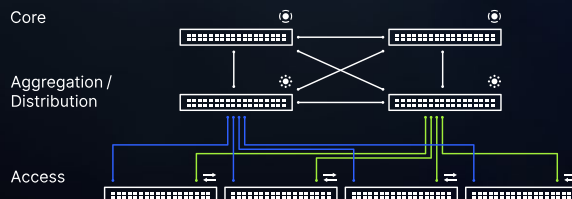
The larger your network becomes, the sooner you should consider a hierarchical network design with more powerful switches to cope with future growth and technology trends.



New

Three-tier design – entirely with LANCOM switches!

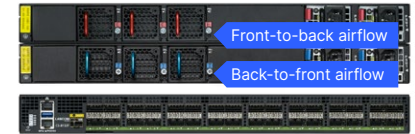
For large, distributed companies and campus networks, a LAN structure with core, distribution, and access layers makes sense – for standardized management and the best possible investment protection from a single source!



Learn more about campus networking

## Core Switch

As a central node for distributed campus area networks, the core switch offers enormous switch capacity. In addition to a selectable fan design, clever switch redundancy concepts (VPC / MC-LAG) in particular ensure seamless availability and maximum network resilience.



New

### LANCOM CS-8132F

- 32-port 100G fiber core switch with 100G QSFP28 industry standard ports and up to 6.4 Tbps switch capacity
- Support of VPC / MC-LAG and ISSU for the realization of networks with 100 % uptime
- Full layer 3 functionality through VRRP, DHCP, static and policy-based dynamic routing via OSPF v2/v3 and BGP4
- Two variants available for front-to-back (F2B) or back-to-front (B2F) airflow for optimum 19" rack cooling
- Incl. 2x redundant, hot-swappable PSUs and 3x redundant (n+1), hot-swappable fans for increased reliability
- Functional expansion option with integrated 64GB SSD for the use of third-party software such as monitoring applications
- Including LANCOM Limited Lifetime Warranty (LLW)
- Industry standard CLI

LANCOM SFAN-CS8-F2B / SFAN-CS8-B2F (hot-swappable fan modules)  
LANCOM SPSU-750-F2B / SPSU-750-B2F (hot-swappable PSUs)



### VPC 100 % uptime of the network

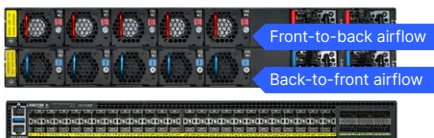
Reliability is one of the most important planning components for fail-safe switch networking. With the virtualization technology Virtual Port Channel (VPC), also known as MC-LAG (Multi-chassis Link Aggregation Group), two interconnected switches form a virtual unit. However, both switches remain independently manageable devices that can be restarted or updated individually.

VPC thus forms the basis for In-Service Software Upgrades (ISSU), e.g. firmware updates during operation. This means that 100 % network uptime, also known as zero downtime, can be achieved from core to access level with LANCOM switches!

## Fully Managed Aggregation Switches

Aggregation switches are the central interface between the core and access level. Equipped with high-performance fiber-optics ports in the downlink, high-performance fiber-optics ports in the uplink, and redundancy protocols, such as VPC and stacking, they form the reliable distribution basis for fail-safe networks. The following also applies to all of them:

- **Low Total Cost of Ownership (TCO)** with industry standard ports (no proprietary accessories)
- **Simple management** via industry standard CLI
- **Fail-safe** with redundant, hot-swappable PSUs and fans
- **Replacement service** up to the End of Life status of the device (max. 10 years) with the included LANCOM Limited Lifetime Warranty (LLW)



New

### LANCOM YS-7154CF

- 54-port stackable 25G fiber aggregation switch in high-availability campus networks or as a collapsed core in two-tier networks
- 48x 25G SFP28 and 6x 100G QSFP28 ports, including 4x Flex stacking ports
- Up to 3.6 Tbps switch capacity and full layer 3 functionality
- Network redundancy and 100 % uptime with VRRP, VPC / MC-LAG, and ISSU or alternatively stacking for almost 100 % uptime with uplink / stacking ports
- Selectable F2B or B2F airflow design for optimum cooling
- Functional expansion with additional x86 CPU and integrated 32GB SSD

**LANCOM SFAN-YS7-F2B / SFAN-YS7-B2F** (hot-swappable fan modules)

**LANCOM SPSU-400-F2B / SPSU-400-B2F** (hot-swappable PSUs)

### LANCOM XS-6128QF



- 28-port stackable 10G fiber aggregation switch for medium-sized and large distributed networks, also as a collapsed core in two-tier networks
- 20x 10G SFP+ downlink ports, including 4x multi-Gigabit combo ports (SFP+ oder 1G / 2.5G / 5G / 10G nBASE-T), 4x 25G SFP28 or 2x 40G QSFP+ Flex uplink ports, as well as 4x 50G SFP-DD-Flex stacking ports
- Up to 1,000 Gbps switch capacity and full layer 3 functionality
- Network redundancy and 100 % uptime with VRRP, VPC / MC-LAG, and ISSU or alternatively stacking with Flex uplink or stacking ports

**LANCOM SFAN-XS6** (hot-swappable fan module)



### LANCOM XS-5116QF



- 16-port stackable 10G fiber aggregation switch for medium-sized, distributed networks
- 14x 10G SFP+ downlink ports, thereof 2x multi-Gigabit combo ports (SFP+ or 1G / 2.5G / 5G / 10G), and 2x 40G QSFP+ uplink / stacking ports
- Up to 440 Gbps switch capacity and full layer 3 functionality
- Network redundancy with stacking

### LANCOM XS-5110F



- 10-port stackable 10G fiber aggregation switch for smaller, distributed networks
- 8x 10G SFP+ and 2x multi-Gigabit Ethernet ports (1G / 2.5G / 5G / 10G)
- Up to 200 Gbps switch capacity and full layer 3 functionality
- Network redundancy with stacking

## Accessories for Enterprise Switches

To build up power supply redundancy or to expand the PoE budget, you can easily equip your LANCOM aggregation switches as well as the XS and GS-4500 series with additional power supplies during operation (hot-swappable).

### LANCOM SPSU-920



- 920 watts hot-swappable power supply unit
- Protection against current spikes, overvoltage, and overheating
- Compatible with LANCOM XS-4554YUP, XS-4530YUP, GS-4554XUP, GS-4554XP, GS-4530XUP, GS-4530XP, XS-3550YUP, and GS-3652XUP

### LANCOM SPSU-250



- 250 watts hot-swappable power supply unit
- Protection against current spikes, overvoltage, and overheating
- Compatible with LANCOM XS-6128QF, XS-5116QF, GS-4554X, and GS-4530X

Further information on accessories for all LANCOM switches can be found at: [www.lancom-systems.com/products/switches/accessories](http://www.lancom-systems.com/products/switches/accessories)

## Full Layer 3 Stackable Enterprise-Class Access Switches

These stackable access switches also offer you the same advantages and functions at the access level that you are accustomed to from LANCOM aggregation switches: **CLI and industry standard ports, fail-safe operation with redundant power supplies and fans, and a replacement service (LLW) are included in all models.** With the LANCOM access switches of the XS and GS-4500 series, you can reliably set up large, data-intensive LAN infrastructures and form the basis for the operation of powerful Wi-Fi 7 and Wi-Fi 6(E) access points.

New

### LANCOM XS-4554YUP



- 54-port stackable 10G PoE++ multi-Gigabit access switch
- 12x 10 and 36x 2.5 multi-Gigabit Ethernet ports as well as 4x 25G SFP28 and 2x 100G QSFP28 uplink or stacking ports
- Up to 1,020 Gbps switch capacity and full layer 3 functionality
- Network redundancy and 100 % uptime with VRRP, VPC / MC-LAG, and ISSU or alternatively stacking for almost 100 % uptime with uplink / stacking ports
- PoE++ support in accordance with IEEE 802.3bt PD-Type 4 on all 48 Ethernet ports with up to 1,440 watts PoE budget as the basis for Wi-Fi 7 access points

New

### LANCOM XS-4530YUP



- 30-port stackable 10G PoE++ multi-Gigabit access switch
- 12x 10 and 12x 2.5 multi-Gigabit Ethernet ports as well as 4x 25G SFP28 and 2x 100G QSFP28 uplink or stacking ports
- Up to 900 Gbps switch capacity and full layer 3 functionality
- Network redundancy and 100 % uptime with VRRP, VPC / MC-LAG, and ISSU or alternatively stacking for almost 100 % uptime with uplink / stacking ports
- PoE++ support in accordance with IEEE 802.3bt PD-Type 4 on all 24 Ethernet ports with up to 1,440 watts PoE budget as the basis for Wi-Fi 7 access points

### Advantages of the Limited Lifetime Warranty (LLW)

- Replacement service up to the End of Life status (max. 10 years) and assurance of security updates up to EOL status of the device
- Fast and uncomplicated processing with repairs in the event of service and thereby protection over the entire lifecycle
- Free of charge: Included directly with purchase (no hidden costs)!



### LANCOM GS-4554XUP



- 54-port stackable 2.5G PoE++ multi-Gigabit access switch
- 48x 2.5 multi-Gigabit Ethernet ports as well as 4x 10G SFP+ and 2x 40G QSFP+ uplink or stacking ports
- Up to 480 Gbps switch capacity and full layer 3 functionality
- Network redundancy with stacking
- PoE++ support in accordance with IEEE 802.3bt PD-Type 4 (24x 2.5G ports), PoE+ support in accordance with IEEE 802.3af/at (24x 2.5G ports), and with up to 1,440 watts PoE budget as the basis for Wi-Fi 6E access points

### LANCOM GS-4554X / GS-4554XP



- 54-port stackable 2.5G multi-Gigabit access switch
- 12x 2.5 multi-Gigabit and 36x 1 Gigabit Ethernet ports as well as 4x 10G SFP+ and 2x 40G QSFP+ uplink or stacking ports
- Up to 372 Gbps switch capacity and full layer 3 functionality
- Network redundancy with stacking
- LANCOM GS-4554XP additionally with PoE+ support in accordance with IEEE 802.3af/at with up to 1,440 watts PoE budget for Wi-Fi 6E access points

### LANCOM GS-4530XUP



- 30-port stackable 2.5G PoE++ multi-Gigabit access switch
- 24x 2.5 multi-Gigabit Ethernet ports as well as 4x 10G SFP+ and 2x 40G QSFP+ uplink or stacking ports
- Up to 360 Gbps switch capacity and full layer 3 functionality
- Network redundancy with stacking
- PoE++ support in accordance with IEEE 802.3bt PD-Type 4 with up to 1,440 watts PoE budget as the basis for Wi-Fi 6E access points

### LANCOM GS-4530X / GS-4530XP



- 30-port stackable 2.5G multi-Gigabit access switch
- 12x 2.5 multi-Gigabit and 12x 1 Gigabit Ethernet ports as well as 4x 10G SFP+ and 2x 40G QSFP+ uplink or stacking ports
- Up to 324 Gbps switch capacity and full layer 3 functionality
- Network redundancy with stacking
- LANCOM GS-4530XP additionally with PoE+ support in accordance with IEEE 802.3af/at with up to 720 watts PoE budget for Wi-Fi 6E access points



## Layer 3 Lite SME-Class Access Switches

These fully managed access switches offer a powerful yet cost-effective network solution that is in demand in small and medium-sized enterprises (SME). The XS and GS-3000 series combine basic layer 3 functions, such as static routing and DHCP server, with simple management (proprietary CLI) and a 5-year replacement service.

New

### LANCOM XS-3550YUP



- 50-port 10G PoE++ multi-Gigabit access switch
- 8x 10 multi-Gigabit and 40x 1 Gigabit Ethernet ports as well as 2x 25G SFP28 uplink ports for up to 340 Gbps switch capacity
- 1x hot-swappable PSU and separate slot for adding a second PSU
- PoE++ support in accordance with IEEE 802.3bt PD-Type 4 (8x 10G ports), PoE+ support in accordance with IEEE 802.3af/at (40x 1G ports), and with up to 1,440 watts PoE budget as the basis for Wi-Fi 7 access points
- Non-stop PoE function – continuous supply of connected PoE devices in the event of a software update

New

### LANCOM XS-3526YUP



- 26-port 10G PoE++ multi-Gigabit access switch
- 8x 10 multi-Gigabit and 16x 1 Gigabit Ethernet ports as well as 2x 25G SFP28 uplink ports for up to 292 Gbps switch capacity
- PoE++ support in accordance with IEEE 802.3bt PD-Type 4 (8x 10G ports), PoE+ support in accordance with IEEE 802.3af/at (16x 1G ports), and with up to 720 watts PoE budget as the basis for Wi-Fi 7 access points
- Non-stop PoE function – continuous supply of connected PoE devices in the event of a software update

New

### LANCOM XS-3510YUP



- 10-port 10G PoE++ multi-Gigabit access switch
- 4x 10 multi-Gigabit and 4x 1 Gigabit Ethernet ports as well as 2x 25G SFP28 uplink ports for up to 188 Gbps switch capacity
- PoE++ support in accordance with IEEE 802.3bt PD-Type 4 (4x 10G ports), PoE+ support in accordance with IEEE 802.3af/at (4x 1G ports), and with up to 370 watts PoE budget as the basis for Wi-Fi 7 access points
- Non-stop PoE function – continuous supply of connected PoE devices in the event of a software update

### LANCOM GS-3652X / GS-3652XP / GS-3652XUP



- 52-port 2.5G multi-Gigabit access switch
- 12x 2.5 multi-Gigabit and 36x 1 Gigabit Ethernet ports as well as 4x 10G SFP+ uplink ports for up to 212 Gbps switch capacity – ideal for Wi-Fi 6(E)
- LANCOM GS-3652XP additionally with PoE+ support in accordance with IEEE 802.3af/at on all 48 Ethernet ports with up to 740 watts PoE budget
- LANCOM GS-3652XUP additionally with PoE++ support in accordance with IEEE 802.3bt PD-Type 4 (12x 2.5G ports), PoE+ support in accordance with IEEE 802.3af/at (36x 1G ports), and with up to 1,440 watts PoE budget

### LANCOM GS-3628X /

#### New GS-3628XP / GS-3628XUP



- 28-port 2.5G multi-Gigabit access switch
- 12x 2.5 multi-Gigabit and 12x 1 Gigabit Ethernet ports as well as 4x 10G SFP+ uplink ports for up to 164 Gbps switch capacity – ideal for Wi-Fi 6(E)
- LANCOM GS-3628XP additionally with PoE+ support in accordance with IEEE 802.3af/at on all 24 Ethernet ports with up to 370 watts PoE budget
- LANCOM GS-3628XUP additionally with PoE++ support in accordance with IEEE 802.3bt PD-Type 4 (12x 2.5G ports), PoE+ support in accordance with IEEE 802.3af/at (12x 1G ports), and with up to 740 watts PoE budget

### LANCOM GS-3510XP



- 10-port 2.5G PoE+ multi-Gigabit access switch
- 4x 2.5 multi-Gigabit and 4x 1 Gigabit Ethernet ports as well as 2x 10G SFP+ uplink ports for up to 68 Gbps switch capacity – ideal for Wi-Fi 6
- PoE+ support in accordance with IEEE 802.3af/at with up to 130 watts PoE budget
- Zero-dB design – ideal for small and home offices

### Find the right access switch!

Answer the questions of the LANCOM Access Switch Matchmaker:

[www.lancom-systems.com/switch-matchmaker](http://www.lancom-systems.com/switch-matchmaker)

Or use the series comparison to see an overview of the switch series:

[www.lancom-systems.com/switch-series-comparison](http://www.lancom-systems.com/switch-series-comparison)



## Layer 3 Lite Industrial-Class Access Switch

The robust switch is specially designed for demanding industrial environments and harsh application fields, such as manufacturing plants or logistics centers, as well as critical infrastructure, such as wind power or photovoltaic systems. Thanks to its resistance to extreme conditions and the cloud management, a uniform, reliable LANCOM switch infrastructure can also be realized in industrial environments.

New

### LANCOM IGS-3510XUP

- 10-port 2.5G PoE++ multi-Gigabit industrial access switch
- 4x 2.5 multi-Gigabit and 4x 1 Gigabit Ethernet ports as well as 2x 10G SFP+ uplink ports for up to 68 Gbps switch capacity
- PoE++ support in accordance with IEEE 802.3bt PD-Type 4 (4x 2.5G ports), PoE+ support in accordance with IEEE 802.3af/at (4x 1G ports), and with up to 360 watts PoE budget as the basis for Wi-Fi 6(E) access points
- Supports ERPS (ITU-T G.8032) and PTP (IEEE 1588v2) network protocols for higher resilience in the industrial sector
- Fanless, rugged aluminum housing for increased reliability against shocks and vibrations and in demanding outdoor temperatures (-40 °C to +60 °C)



New

### LANCOM DPSU-480/55

- 480 watts DIN rail power supply for LANCOM IGS-3510XUP
- Protection against current spikes, overvoltage, short circuit, and overheating



## Layer 3 Lite SME-Class Access Switches

These fully managed access switches are your first choice for cost-efficient networking of less data-intensive end devices, such as IP telephones, printers, or PCs. They offer basic layer 3 functions and, depending on the model, a central power supply for PoE end devices with moderate energy requirements without additional electrical installation.

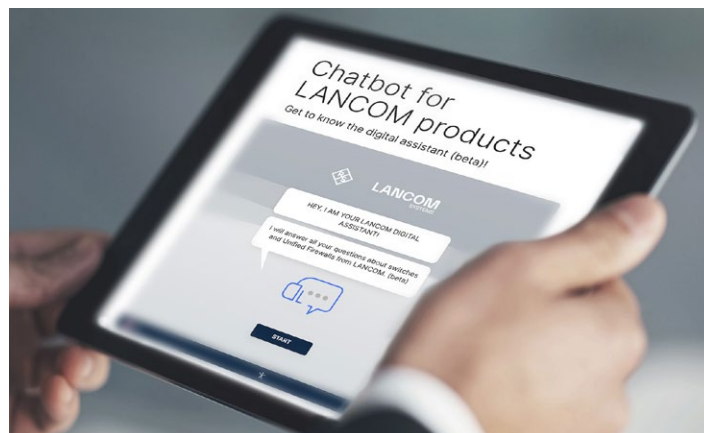
### LANCOM GS-3252P



- 52-port PoE+ Gigabit access switch
- 48x 1 Gigabit Ethernet ports (thereof 36x PoE+ support according to IEEE 802.3af/at with up to 370 watts PoE budget) and 4x 10G SFP+ uplink ports for up to 176 Gbps switch capacity

### LANCOM GS-3126X / GS-3126XP

- 26-port Gigabit access switch
- 24x 1 Gigabit Ethernet ports and 2x 10G SFP+ uplink ports for up to 88 Gbps switch capacity
- **LANCOM GS-3126XP** additionally with PoE+ support in accordance with IEEE 802.3af/at on all 24 Ethernet ports with up to 185 watts PoE budget



### AI-based digital assistant

Ask your individual questions directly to the AI-based chatbot. You are welcome to test it directly. We look forward to your questions and feedback!

## Layer 2 SME-Class Access Switches

In network structures with simple performance requirements, these fully managed access switches ensure efficient task distribution and tailor-made networking scenarios.

### LANCOM GS-2328F



- 28-port Gigabit fiber access switch for interference-free high-speed transmission over distances of several kilometers
- 20x 1G SFP ports, 4x combo ports (TP / SFP), and 4x 10G SFP+ ports for up to 128 Gbps switch capacity

### LANCOM GS-2326+ / GS-2326P+



- 26-port Gigabit access switch
- 24x 1 Gigabit Ethernet ports and 2x combo ports (TP / SFP) for up to 52 Gbps switch capacity, without fan
- **LANCOM GS-2326P+** additionally with PoE+ support in accordance with IEEE 802.3af/at with up to 185 watts PoE budget and quiet fan

### LANCOM GS-2310 / GS-2310P+



- 10-port Gigabit access switch
- 8x 1 Gigabit Ethernet ports and 2x combo ports (TP / SFP) for up to 20 Gbps switch capacity, without fan
- **LANCOM GS-2310P+** additionally with PoE+ support in accordance with IEEE 802.3af/at with up to 130 watts PoE budget

## Unmanaged Switches

The LANCOM unmanaged switches offer you the perfect plug-and-play solution for the integration of office equipment in simple and small network environments.

### LANCOM GS-1108 / GS-1108P



- 8-port unmanaged Gigabit switch
- 8x 1 Gigabit Ethernet ports for up to 16 Gbps switch capacity, without fan
- **LANCOM GS-1108P** additionally with PoE+ support in accordance with IEEE 802.3af/at with up to 60 watts PoE budget and quiet fan

Further information on all switches can be found at:  
[www.lancom-systems.com/products/switches](http://www.lancom-systems.com/products/switches)

## Switch Accessories

From modular extensions to mounting materials – the range of accessories enables flexible adaptation and optimization of the switches for a wide variety of requirements and application scenarios.

### LANCOM Transceiver Modules

- Flexible use in switches with integrated SFP ports\*
- For (bidirectional) fiber-optics networking or as a copper-bound Ethernet port



### LANCOM Direct Attach Cable

- Practical alternative to using individual SFP transceivers



### LANCOM Switch Rack Mount L250

- Stable, L-shaped mounting brackets for rear stabilization of LANCOM SME-class access switches (from 37 cm depth) in 19" racks

\* Compatibilities can be found at: [www.lancom-systems.com/transceiver-modules](http://www.lancom-systems.com/transceiver-modules)

## Discover the theme series for switching solutions from LANCOM!

From switching basics and network design suggestions to specific configuration instructions, you will find bundled expertise on the efficient use of LANCOM access, aggregation / distribution, and core switches in this theme series. Whether you are a beginner or an expert – here you will find the right information for your personal level of knowledge.

### Gain switch expertise now!

1. **Basics** Two-tier & three-tier switch architectures
2. **Basics** Switch security with IEEE 802.1X
3. **Design guide** Redundancy concepts for switch networks
4. **Setup guide** VPC configurations with LANCOM switches
5. **Setup guide** Stacking with LANCOM switches
6. **Setup guide** Configuration options LANCOM XS-6128QF

More at:  
[www.lancom-systems.com/products/switches/three-tier-switch-networks](http://www.lancom-systems.com/products/switches/three-tier-switch-networks)

## LANCOM Wi-Fi 7

### Experience the future of wireless connectivity

Our Wi-Fi 7 access points were designed with a clear vision: making professional networks more secure and sustainable and at the same time relieving administrators by providing a high degree of automation. Additionally, the new Wi-Fi 7 standard enables faster data transfer and more stable transmission quality than Wi-Fi 6.



Wi-Fi 7

### Discover our holistic Wi-Fi 7 technology!

#### SECURE



- **Security scan:** radio field monitoring with dedicated scan radio
- **Firmware engineered in Germany:** guaranteed backdoor-free, Secure Boot, as well as regular feature updates and security updates
- **Integrated assembly lock:** counteracts opportunist theft

#### SUSTAINABLE



- **LANCOM Sustainability Mode:** Reduced energy consumption in the Wi-Fi
- **Energy monitoring for the entire network**
- **Environmentally friendly packaging:** plastic-free packaging and optimized scope of delivery by avoiding packaging waste and electronic waste
- **100% recyclable housing:** 100% recyclable materials

#### AUTOMATED



- **Cloud-managed Wi-Fi:** zero-touch commissioning, auto config, 24/7 monitoring & alerting, and Wi-Fi anomaly detection via the LMC
- **Radio resource management:** self-learning, cloud-based automation solution LANCOM Active Radio Control 2.0 optimizes Wi-Fi networks of any size
- **Energy savings without risk:** Intelligent, cloud-based, dynamically adapting optimization solution LANCOM Active Power Control

More about Wi-Fi 7 technology at: [www.lancom-systems.com/technology/wifi-7](http://www.lancom-systems.com/technology/wifi-7)  
or more about LANCOM Wi-Fi 7 at: [www.lancom-systems.com/wifi-7](http://www.lancom-systems.com/wifi-7)



New

#### LANCOM LX-7500

- Wi-Fi 7 access point with 4x4 MU-MIMO tri-band Wi-Fi
- Parallel operation in 2.4, 5, and 6 GHz for up to 19 Gbps
- 1x 10 Gigabit Ethernet and 1x 2.5 Gigabit Ethernet ports (each including PoE++ according to IEEE 802.3bt)
- Dedicated scan radio for continuous radio field monitoring
- Dual PoE for seamless failover in the event of a power failure on one port; alternatively, configurable load balancing to combine different PoE classes on the two ports (redundant power supply to the second switch)
- Innovative housing design incl. low-profile mounting plate, protection class IP50 and certified fire resistance in the event of fire (UL-2043)
- IoT support: Bluetooth Low Energy (BLE) 5.1 and USB 3.0



New

#### LANCOM LX-7300

- Wi-Fi 7 access point with 2x2 MU-MIMO tri-band Wi-Fi
- Parallel operation in 2.4, 5, and 6 GHz for up to 9.3 Gbps
- 1x 10 Gigabit Ethernet port including PoE++ according to IEEE 802.3bt and 1x 2.5 Gigabit Ethernet port
- Dedicated scan radio for continuous radio field monitoring
- Innovative housing design incl. low-profile mounting plate, protection class IP50 and certified fire resistance in the event of fire (UL-2043)
- IoT support: BLE (5.1) and USB 3.0



## Wi-Fi 6E Indoor Access Points

With the 6 GHz spectrum dedicated exclusively to Wi-Fi, you can fully harness the power of high-throughput, low-interference Wi-Fi 6E. This enables high capacities for modern, bandwidth-intensive applications. Wi-Fi 6E-capable access points truly excel in high-density environments, such as soccer stadiums, airports, and universities.

### LANCOM LX-6500 / LX-6500E

- Professional VIP Wi-Fi experience in high-traffic wireless networks
- Wi-Fi 6E access point with 4x4 MU-MIMO tri-band Wi-Fi
- Parallel operation in 2.4, 5, and 6 GHz for up to 8.4 Gbps
- 2x 2.5 Gigabit Ethernet ports, of which 1x PoE++ according to IEEE 802.3bt for power supply via PoE or external PSU
- Suitable for use with medical electrical equipment in a non-life-supporting environment (EN 60601-1-2)
- IoT support: BLE (5.1) and USB 3.0
- **LANCOM LX-6500E** additionally with integrated radio module for energy-efficient communication with digital displays for price labeling or for IoT applications



Further information on all Wi-Fi products can be found at:  
[www.lancom-systems.com/products/wireless-lan](http://www.lancom-systems.com/products/wireless-lan)



### Find the ideal access point!

Simply answer the questions of the LANCOM Access Point Matchmaker:

[www.lancom-systems.com/access-point-matchmaker](http://www.lancom-systems.com/access-point-matchmaker)

## Wi-Fi 6 Indoor Access Points

Wi-Fi 6 access points provide fast and stable performance for modern applications in home and business networks – ideal for hotels, offices, clinics, or branch locations that depend on smooth Wi-Fi connectivity.

### LANCOM LX-6400 / LX-6402

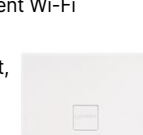
- Powerful, professional Wi-Fi for high user densities
- Wi-Fi 6 access point with 4x4 MU-MIMO dual-band concurrent Wi-Fi
- Parallel operation in 2.4 and 5 GHz for up to 3.6 Gbps
- 1x 2.5 Gigabit Ethernet port (incl. PoE according to IEEE 802.3at) and 1x 1 Gigabit Ethernet port, power supply via PoE or external PSU
- Suitable for use with medical electrical equipment in a non-life-supporting environment (EN 60601-1-2)
- IoT support: BLE (5.0) and USB 3.0
- **LANCOM LX-6400** with 8 integrated 180° antennas
- **LANCOM LX-6402** with 4 flexibly alignable dual-band omni-directional antennas (2.4 GHz / 5 GHz), alternatively: connection of optional sector antennas



New

### LANCOM LX-6212

- Powerful, professional Wi-Fi for medium user densities
- Wi-Fi 6 access point with 2x2 MU-MIMO dual-band concurrent Wi-Fi
- Parallel operation in 2.4 and 5 GHz for up to 1.8 Gbps
- 2x 1 Gigabit Ethernet ports, of which 1x PoE in accordance with IEEE 802.3at for power supply via PoE or external PSU
- Including 4 flexibly alignable dual-band omni-directional antennas, alternatively: connection of optional ceiling, sector, or directional radio antennas
- IoT support: BLE (5.1) and USB 2.0



### LANCOM LX-6200 / LX-6200E

- Powerful, professional Wi-Fi for medium to low user densities
- Wi-Fi 6 access point with 2x2 MU-MIMO dual-band concurrent Wi-Fi
- Parallel operation in 2.4 and 5 GHz for up to 1.8 Gbps
- 1x 1 Gigabit Ethernet port incl. PoE according to IEEE 802.3at, power supply via PoE or external PSU
- Suitable for use with medical electrical equipment in a non-life-supporting environment (EN 60601-1-2)
- IoT support: BLE (5.1) and USB 2.0
- **LANCOM LX-6200E** additionally with integrated radio module for digital displays



## Outdoor & Industrial Access Points

Whether in expansive outdoor areas or harsh indoor environments, these access points with their robust protective housings can withstand any adversity. This enables you to network even hard-to-reach locations, such as leisure parks, ski resorts, or mobile equipment in warehouse logistics.

### LANCOM OX-6400 / OX-6402

- Wi-Fi 6 outdoor access point with 4x4 MU-MIMO dual-band concurrent Wi-Fi
- Parallel operation in 2.4 and 5 GHz for up to 3.6 Gbps
- 2x 2.5 Gigabit Ethernet ports (1x PoE-in, 1x PoE-out), BLE (5.1)
- PoE passthrough for connecting an additional PoE network device (e. g. IP camera)
- Robust IP67 metal housing with integrated status LEDs
- Reliable at extreme temperatures (-30°C to +65°C)
- Suitable for use with medical electrical equipment in a non-life-supporting environment (EN 60601-1-2)
- **LANCOM OX-6400** with integrated 70° sector antennas
- **LANCOM OX-6402** with 4 external omni-directional antennas, alternatively: connection of optional sector antennas



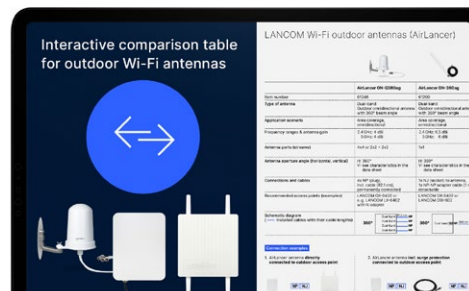
### LANCOM OW-602

- Wi-Fi 6 outdoor access point with 2x2 MU-MIMO dual-band concurrent Wi-Fi
- Parallel operation in 2.4 and 5 GHz for up to 1.7 Gbps
- 2x 1 Gigabit Ethernet ports, BLE (5.1)
- Robust IP67 protective housing, reliable even at extreme temperatures (-30°C to +65°C)
- Including 4 omni-directional antennas, alternatively: connection of optional sector antennas

### LANCOM IAP-822

- Wi-Fi 5 industrial access point with 2x2 MU-MIMO dual-band concurrent Wi-Fi
- Parallel operation in 2.4 and 5 GHz for up to 867 Mbps
- 1x 1 Gigabit Ethernet port and 1x Fast Ethernet port
- Robust IP50 full metal housing, reliable even at demanding temperatures (-20°C to +50°C)
- Including 4 omnidirectional antennas

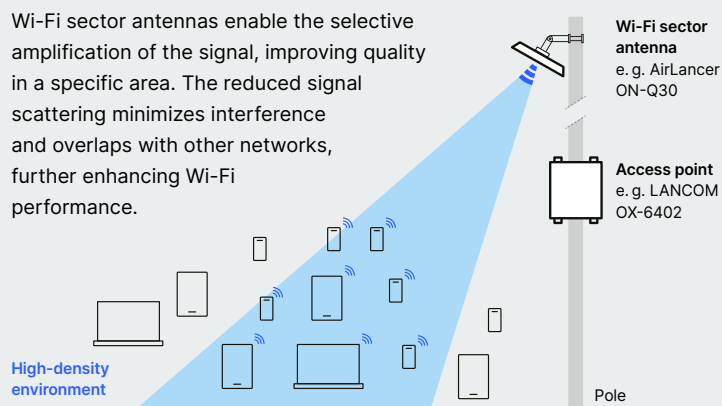
Further information on suitable Wi-Fi antennas can be found at:  
[www.lancom-systems.com/products/wireless-lan/accessories](http://www.lancom-systems.com/products/wireless-lan/accessories)



In which deployment scenarios and with which access points are the LANCOM Wi-Fi outdoor antennas best suited? Answers to these and other questions can be found in the antenna overview:

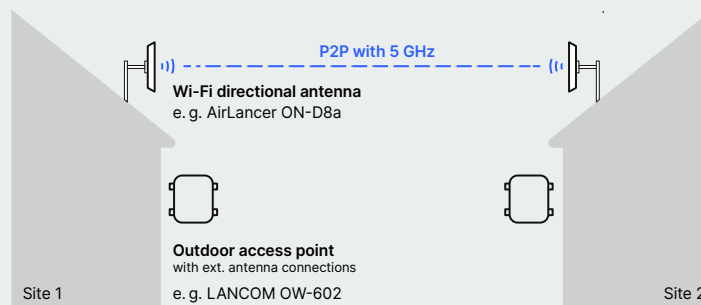
### Wi-Fi coverage in high-density environments

Wi-Fi sector antennas enable the selective amplification of the signal, improving quality in a specific area. The reduced signal scattering minimizes interference and overlaps with other networks, further enhancing Wi-Fi performance.



### High-speed point-to-point connections (P2P)

With P2P connections, distant buildings in outdoor areas can be reliably connected via Wi-Fi, thanks to directional antennas that eliminate the need for complex cabling or costly dedicated lines for network expansion.



## WLAN Controllers

You can rely on efficient Wi-Fi management also for networks not managed via the LANCOM Management Cloud. The LANCOM WLAN controllers (WLC) serve as central instances for fully automatic configuration of all Wi-Fi access points and gateways within the network.

New

### LANCOM WLC-2000



- Central firmware rollout, monitoring, and management from 25 to 2,000 access points and Wi-Fi gateways
- Zero-touch deployment of connected Wi-Fi devices
- Integrated hotspot functionality

New

### LANCOM WLC-60



- Central firmware rollout, monitoring, and management from 6 to 60 access points and Wi-Fi gateways
- Zero-touch deployment of connected Wi-Fi devices
- Integrated hotspot functionality

## vRouter

### LANCOM vRouter as Virtual WLAN Controller (vWLC)

- Software-based WLAN controller for operating up to 1,500 access points in a virtualized environment

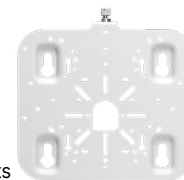


## Wi-Fi Accessories

New

### LANCOM LX-7000 Universal Mount

- Universally compatible mounting plate for the LANCOM access points of the LX-7000 series, compatible with drill holes of the brackets of earlier LANCOM access points



New

### LANCOM LX-7000 T-bar Mount

- Mounting element for flexible and easy installation of LANCOM access points of the LX-7000 series on suspended ceilings



New

### LANCOM PoE++ 10G Injector

- 1-port PoE injector with multi-Gigabit Ethernet support and link speeds of up to 10 Gbps
- Power supply of LANCOM access points via PoE, support of PoE++ (IEEE 802.3bt up to 65W), downward compatible to IEEE 802.3af/at



New

### AirLancer SN-LAN-10G

- 10G surge protection adapter for easy installation on LAN devices with RJ45 connection
- Reliable even at demanding temperatures (-40 °C to +85 °C)



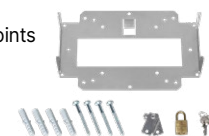
### AirLancer SurgeProtect

- Surge protection adapter for connection between LANCOM outdoor Wi-Fi antennas (ON) and access points



### LANCOM Wall Mount (LN)

- Sturdy mounting plate for attaching LANCOM access points of the LN and LX series as well as the LANCOM 750-5G
- Anti-theft protection with 4-fold Kensington lock and padlock included



### LANCOM IAP Mount

- Stable mounting bracket for pole or DIN rail mounting of LANCOM devices with IAP housing



Further mounting devices, antennas, power supply units, and cables can be found at: [www.lancom-systems.com/products/wireless-lan/accessories](http://www.lancom-systems.com/products/wireless-lan/accessories)

## Software Options

The software options allow you to equip your LANCOM products with a wide range of functionalities. These cost-effective upgrades expand the capabilities of your devices to suit your specific needs.

### LANCOM Option **VPN**

Upgrade the number of available IPSec VPN tunnels in SD-WAN gateways\*

### LANCOM Option **BPjM Filter**

Upgrade for SD-WAN gateways and WLAN controllers to include a youth protection filter according to German regulations (German Federal Review Board, BPjM)\*

### LANCOM Option **Content Filter**

Upgrade for SD-WAN gateways and WLAN controllers to include category-based checking and blocking of websites\*

### LANCOM Option **WLC Basic**

Upgrade for SD-WAN gateways to include WLAN controller functionality

### LANCOM Option **WLC Upgrade**

Upgrade the number of access points and Wi-Fi-capable SD-WAN gateways that can be managed by the WLAN controller

### LANCOM Option **High Availability Clustering**

Upgrade for SD-WAN central site gateways, SD-WAN gateways, and WLAN controllers for setting up highly available device clusters

### LANCOM Option **All-IP**

Upgrade to add professional telephony management to SD-WAN gateways

### LANCOM Option **VoIP +10**

Upgrade for SD-WAN gateways by 10 additional VoIP numbers (max. 40) and 10 additional SIP lines (max. 55)



### LANCOM Option **Public Spot**

Upgrade for SD-WAN gateways, WLAN controllers, and access points for setting up secure guest access

### LANCOM Option **Public Spot PMS Accounting Plus**

Upgrade of the LANCOM Public Spot Option to integrate the hotspot solution into hotel billing systems (Property Management System, PMS)

\* These functions are already included in the LANCOM UF Full License of the LANCOM R&S® Unified Firewalls.

You can find more information on all software options at: [www.lancom-systems.com/products/software-options](http://www.lancom-systems.com/products/software-options)

### Cloud-managed hotspot

The LANCOM Management Cloud (LMC) enables the setup of one or more Wi-Fi hotspots with just a few clicks. Unlike networks not managed via the cloud, no additional gateway or WLAN controller with the LANCOM Public Spot Option is needed – a valid LMC license on the devices involved in the hotspot is sufficient.





## LANCOM Services

Our specialists are happy to assist you with network issues, planning, optimization, and urgent emergencies.

### LANCOM Service **Consulting Day**

Advice on network optimization including status quo and problem analysis as well as investment planning

### LANCOM Service **WLAN Survey**

Wi-Fi coverage with final report for planning or optimizing Wi-Fi infrastructures

### LANCOM Service **Config**

Individual support for the customization of existing configurations of LANCOM products

### LANCOM Service **Emergency Support**

Short-term, professional remote emergency support with a usual response time of max. 30 minutes

### LANCOM Service **Extended Support Times**

Exclusive remote support availability outside regular business hours (ideal for maintenance work)

Further information about LANCOM Service & Support can be found at: [www.lancom-systems.com/service-support](http://www.lancom-systems.com/service-support)

## LANcare

With prioritized support times, replacement services, and security updates, LANcare products provide everything you need to reliably secure your devices or projects throughout their entire service life.

### LANCOM Service **LANcare Basic**

Security updates extended to End of Life (EOL, min. 5 years) and 5-year replacement service (shipment within 5 days)

### LANCOM Service **LANcare Advanced**

Security updates up to EOL (min. 5 years) and 5 years NBD advance replacement (delivery within one working day)

### LANCOM Service **LANcare Direct 10/5**

Direct, prioritized 10/5 manufacturer support and security updates for devices during the term, 2 to 4 hours initial response time

### LANCOM Service **LANcare Direct Advanced 10/5**

As LANcare Direct 10/5, additionally incl. NBD advance replacement during the term

### LANCOM Service **LANcare Direct 24/7**

Direct, prioritized 10/5 manufacturer support incl. 24/7 emergency hotline and security updates, initial response time from 30 min.

### LANCOM Service **LANcare Direct Advanced 24/7**

As LANcare Direct 24/7, additionally incl. NBD advance replacement during the term

### LANCOM Service **LANcare NBD Replacement**

Next business day (NBD) advance replacement for switches with Limited Lifetime Warranty up to EOL (max. 10 years)

### LANCOM Service **LANcare Premium Support 10/5**

Prioritized 10/5 manufacturer support and security updates for projects, 2 to 4 hours initial response time

### LANCOM Service **LANcare Premium Support 24/7**

Prioritized 10/5 manufacturer support incl. 24/7 emergency hotline & security updates for projects, initial response time from 30 min.

# LANacademy

Understanding, setting up, and maintaining network scenarios does not have to be a challenge. We provide you with the right expertise to become a professional in IT infrastructures. In the LANacademy workshops, you gain specialized knowledge directly from the manufacturer and can apply it immediately. The workshops are specifically tailored for resellers, system house technicians, system administrators, and IT decision-makers, offering flexible scheduling options.

## Our training formats at a glance

- **Expert-led classroom:** classic workshop format with trainers, equipment, and participants in the LANCOM Training Center or for individual workshops at the customer's site
- **Expert-led virtual classroom:** location-independent workshops with trainers and equipment in one room and remote connection of participants
- **Web-based training (WBT):** location-independent and self-directed learning with exclusive materials at your own pace

### Knowledge that connects!

Join us on the path to becoming a true LANCOM IT professional!

More at: [www.lancom-systems.com/lanacademy](http://www.lancom-systems.com/lanacademy)

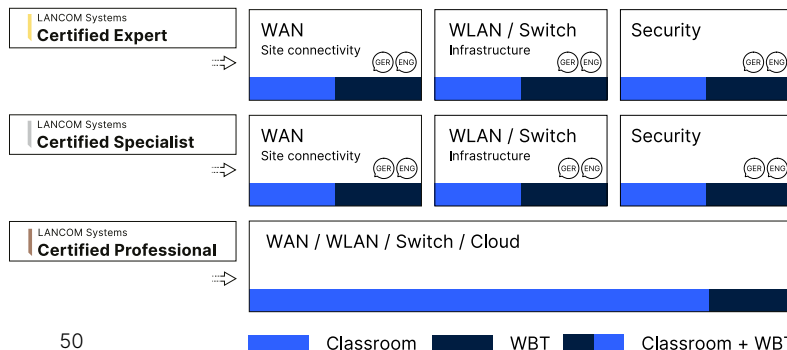


## The workshop offering

- **LANCOM certification workshops:** these workshops provide both theoretical and practical know-how for implementing LANCOM network infrastructures. Participants can earn certifications as a LANCOM Certified Professional, Specialist, or Expert, either during the workshops or through a separate remote certification appointment.
- **LANCOM technology workshops** are offered in three variants: fundamental workshops to teach technical basics, focus workshops for monothematic, in-depth knowledge, and boot camps (3–4 hours) as an ideal orientation for new customers.
- **LANCOM sales workshops** focus on teaching solution-oriented value to support sales and increase opportunities during customer meetings. Targeted at sales and presales staff, these workshops include certifications as a LANCOM Certified Specialist Sales or Presales, or LANCOM Certified Professional Sales.
- **LANCOM knowledge events:** LANUpdate as a roadshow about LANCOM products, solutions, and trends as well as trainee workshops as an introduction to the configuration of LANCOM devices



### Certification Workshops



### Sales Workshops

