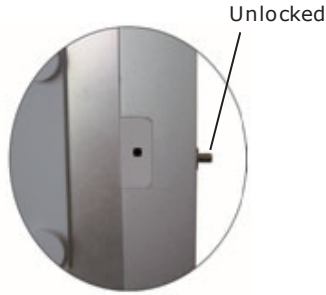
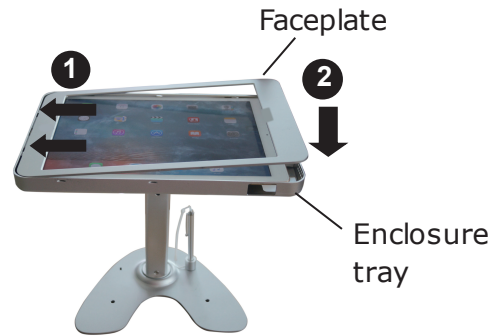


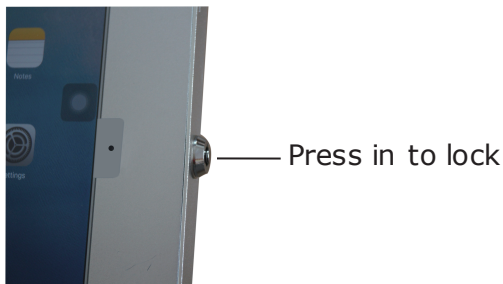
- 1) Place the stand on a flat surface.
- 2) Adjust the enclosure to the horizontal position, then insert the key and turn clockwise to release the lock. Remove enclosure faceplate.



- 3) Place iPad Pro into the enclosure tray, and then place faceplate on top.

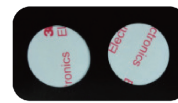


- 4) Close the enclosure and press the lock button.



Optional accessories

Stick adhesive pads to bottom of stand base for scratch protection and temporary mounting.



Cable management system



Slide protectors over the cable.



Pull cable through tube.

Align protectors so opening is perpendicular to slot openings on tube.

Using anti-theft cable:

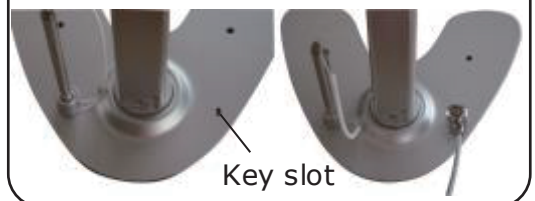
1. Attach cable to slot at base of stand or on back of case.
2. Attach opposite end to any permanent fixture using loop.

Case



Key slot

Base



Key slot