

ADCPU40 Universal CPU/Control Box Bracket

Compatible with Crimson Tilt, Video Wall and Menu Board Mounts

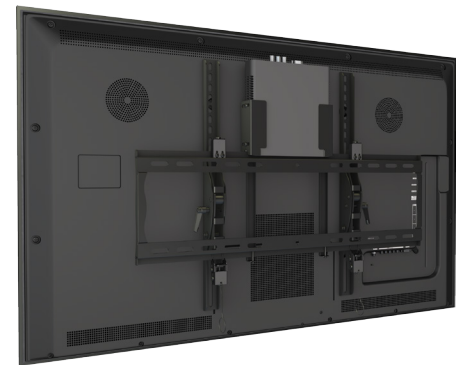
- Fully adjustable to hold a wide variety of components
- Low profile, great for any digital signage application
- Attach to any Crimson Universal wall plate
- Easily hides behind mount and display



ADJUSTABLE

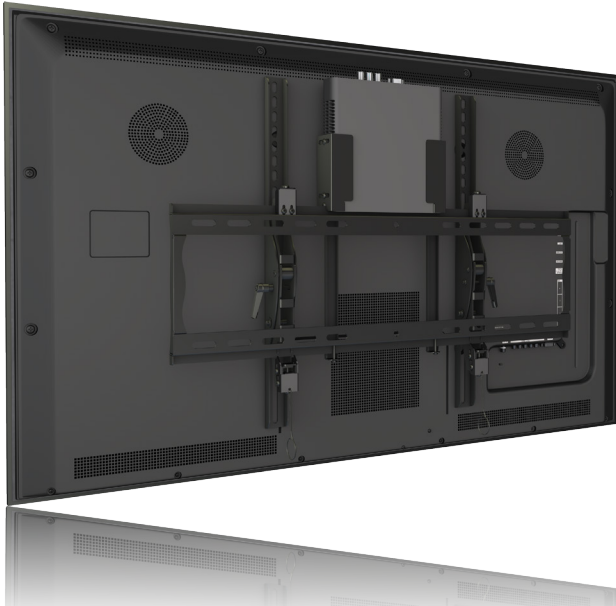
Maximum 2" Depth

Clamps around components up to 2" in depth and slides along the wall plate into the desired position.



ADCPU40 Universal CPU/Control Box Bracket

1-866-MOUNT-TV
www.crimsonav.com



Attribute	Value
Monitor size	32" - 50"
Compatibility	Crimson tilt, video wall and menu board mounts
Weight capacity	20 lb
Post-installation leveling	All models
Tilt	N/A
Adjustment	Adjusts for length and depth to accomodate components up to 2" deep
Packaging Dimensions	15" x 3" x 3"
Shipping weight	1.2 lb
Construction	High-grade cold rolled steel
Product finish	Scratch resistant epoxy powder coat
Color	Black
Model number	ADCPU40
Warranty	Lifetime

Conveniently secure components behind the display by attaching directly to the TV mount wall plate for a clean professional installation. ADCPU40 can handle components up to 2" in depth.

