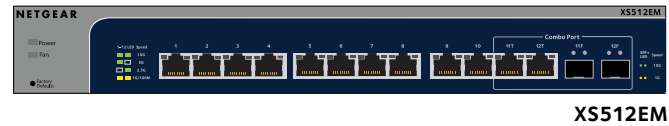


# Installation

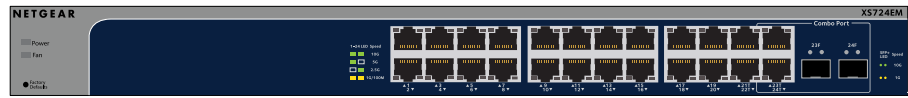
## NETGEAR Smart Managed Plus

12-Port 10-Gigabit/Multi-Gigabit Ethernet Switch with 2 SFP+ Combo Ports (XS512EM)

24-Port 10-Gigabit/Multi-Gigabit Ethernet Switch with 2 SFP+ Combo Ports (XS724EM)



XS512EM



XS724EM

## Package Contents

Unpack the box and verify the contents:

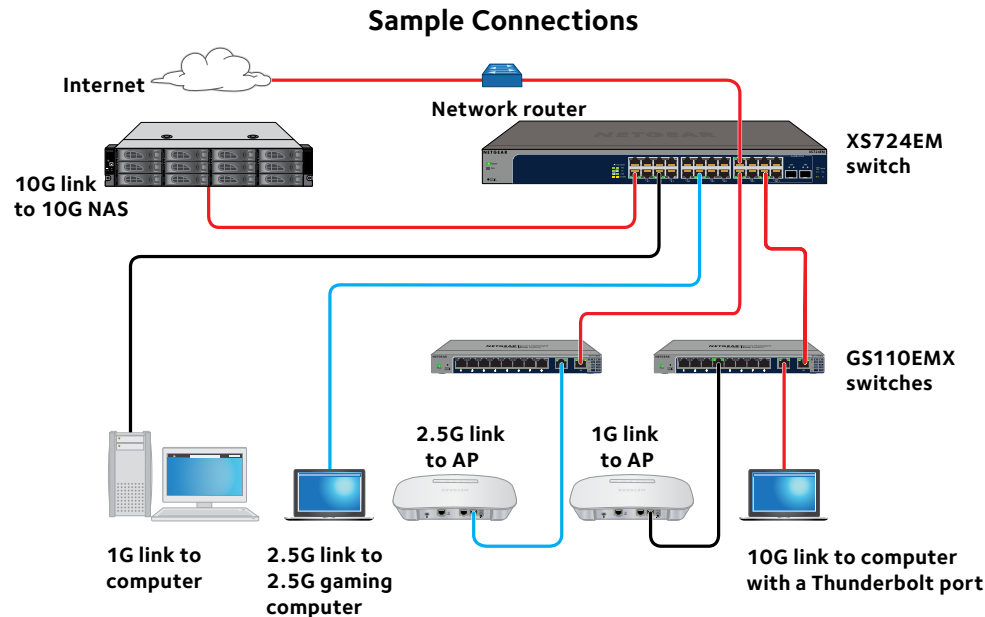
- Switch model XS512EM or XS724EM
- Power cord (localized to the country of sale)
- Four rubber footpads for tabletop installation
- Rack-mount kit
- Installation guide

**NETGEAR**

## Connect the Switch to Your Network

For Gigabit connections, use Category 5e (Cat 5e) or higher-rated Ethernet cables terminated with RJ-45 connectors. To use an SFP+ port, you must insert either a 10G SFP+ or 1G SFP transceiver module, which is available from NETGEAR.

### Step 1. Connect the equipment.



### Step 2. Connect power.



### Step 3. Check the status.

#### Power LED

- On
- Off

#### Fan LED

- Check fan
- Normal

#### Ethernet port LEDs

- 10G link (both port LEDs on). Both port LEDs blinking indicates traffic activity.
- 5G link (left port LED off, right port LED on). Right port LED blinking indicates traffic activity.
- 2.5G link (left port LED on, right port LED off). Left port LED blinking indicates traffic activity.
- 1G or 100M link (both port LEDs on). Both port LEDs blinking indicates traffic activity.
- No link (both port LEDs off).

#### SFP port LEDs (round)

- 10G link (both port LEDs on). Both port LEDs blinking indicates traffic activity.
- 1G link (both port LEDs on). Both port LEDs blinking indicates traffic activity.
- No link (both port LEDs off).

**Note:** The combo ports let you establish a 1G or 10G connection on either the Ethernet RJ-45 port or the SFP+ port. You cannot use both the RJ-45 and SFP+ ports simultaneously.

## Cables and Speeds

The following table describes the network cables that you can use for the switch connections and the speeds that these cables can support, up to 328 feet (100 meters).

(Continued on the next page)

Speed	Cable Type
100 Mbps	Category 5 (Cat 5) or higher rated
1 Gbps, 2.5 Gbps, or 5 Gbps	Category 5e (Cat 5e) or higher rated
10 Gbps	Category 6A (Cat 6A) or higher rated

**Note:** For speeds of 10 Gbps, if the cable length is shorter than 180 feet (55 meters), you can use a Category 6 (Cat 6) cable.

## Access the Switch

By default, the switch receives an IP address from a DHCP server (or router that functions as a DHCP server) in your network. You can access the switch from a Windows-based computer, from a Mac, or from a mobile device on which the NETGEAR Insight app is installed.

For information about accessing the switch from Mac, see the user manual, available at [www.netgear.com/support](http://www.netgear.com/support).

You can also access the switch through the ProSAFE Plus Configuration Utility, which you can download by visiting [www.netgear.com/support/product/PCU](http://www.netgear.com/support/product/PCU).

## Access the Switch From a Windows-Based Computer

1. Open Windows Explorer.
2. Click the **Network** link.
3. If prompted, enable the Network Discovery feature.
4. Under Network Infrastructure, locate the switch.
5. Double-click **XS512EM** or **XS724EM** (xx:xx:xx:xx:xx:xx) (where xx:xx:xx:xx:xx:xx is the MAC address of the switch).

The login page of the web management interface opens.

6. Enter the default switch password, which is password.  
The Home page displays the IP address of the switch.



201-22519-02



**NETGEAR INTL LTD**  
Building 3, University Technology Centre  
Curraheen Road, Cork, Ireland

Make sure that you are running the latest firmware version on your device. To find documentation, firmware, software, or other files, visit [www.netgear.com/support](http://www.netgear.com/support).

## Access the Switch From the NETGEAR Insight Mobile App

During initial setup, you must connect the switch to a WiFi network so that you can access the switch from your mobile device with a local WiFi connection.

1. On your iOS or Android mobile device, visit the app store, search for NETGEAR Insight, and download the app.



Insight



2. Connect your mobile device to the WiFi network of the access point that is connected to the switch.
3. Open the NETGEAR Insight app on your mobile device.
4. If you did not set up a NETGEAR account yet, tap **CREATE NETGEAR ACCOUNT** and follow the onscreen instructions.
5. To log in to your NETGEAR account, tap **LOG IN** and enter your credentials.
6. Name your network and specify a device admin password that applies to all devices that you add to this network.
7. Tap the **NEXT** button.
8. Add the switch from one of the following pages:
  - Day Zero discovery page
  - Network page
  - Device List page

**Note:** You might be prompted to connect the switch to power and to an uplink. Since you already did this (see [Connect the Switch to Your Network](#)), tap the **NEXT** button.

The NETGEAR Insight app discovers the switch and registers it on the network that you named in Step 6. If the app does not discover the switch, make sure that your mobile device and the switch are connected to the same WiFi network.

9. Select the switch to configure and manage it.

## Rack-Mount the Switch

We recommend that you use the rack-mount brackets and screws that are supplied with the switch.

1. Attach the supplied mounting brackets to the side of the switch.  
Insert the screws through each bracket and into the bracket mounting holes in the switch.
2. Tighten the screws with a No. 2 Phillips screwdriver to secure each bracket.
3. Align the mounting holes in the brackets with the holes in the rack, and insert two pan-head screws with nylon washers through each bracket and into the rack.
4. Tighten the screws with a No. 2 Phillips screwdriver to secure mounting brackets to the rack.

## Support

Thank you for purchasing this NETGEAR product. You can visit [www.netgear.com/support](http://www.netgear.com/support) to register your product, get help, access the latest downloads and user manuals, and join our community. We recommend that you use only official NETGEAR support resources.

Si ce produit est vendu au Canada, vous pouvez accéder à ce document en français canadien à <http://downloadcenter.netgear.com/other/>.

(If this product is sold in Canada, you can access this document in Canadian French at <http://downloadcenter.netgear.com/other/>.)

For the current EU Declaration of Conformity, visit <http://kb.netgear.com/11621>.

For regulatory compliance information, visit <http://www.netgear.com/about/regulatory/>.

See the regulatory compliance document before connecting the power supply.

**NETGEAR, Inc.**  
350 East Plumeria Drive  
San Jose, CA 95134, USA

© NETGEAR, Inc., NETGEAR and the NETGEAR Logo are trademarks of NETGEAR, Inc. Any non-NETGEAR trademarks are used for reference purposes only.

October 2017