

# 110-120V **LVC-IV** Low Voltage Control Module

## Part # 121222

### Overview

The LVC-IV module contains a 3-screw terminal block for a low-voltage wall switch, an IR receiver jack, a built-in RF receiver, two-RJ25 ports for RS232 /RS485, a low-voltage relay port with cable and a user-serviceable 3.15 Amp fuse. **Compatible components for each are listed below.**

### Uses

**IR (Infrared) Remote Control**

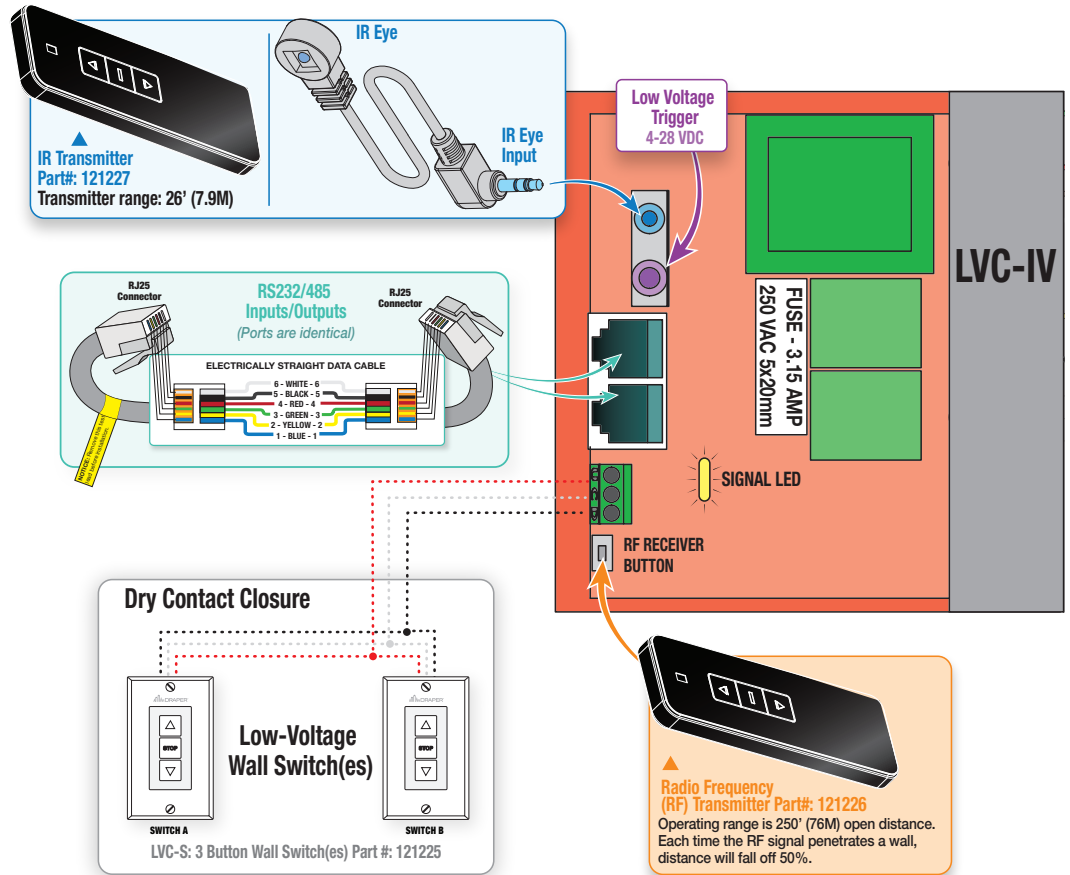
**RJ25 Ports for RS-232/RS-485 Communication**

**Low-Voltage Wall Switch**

**“Dry” Contact Closure**

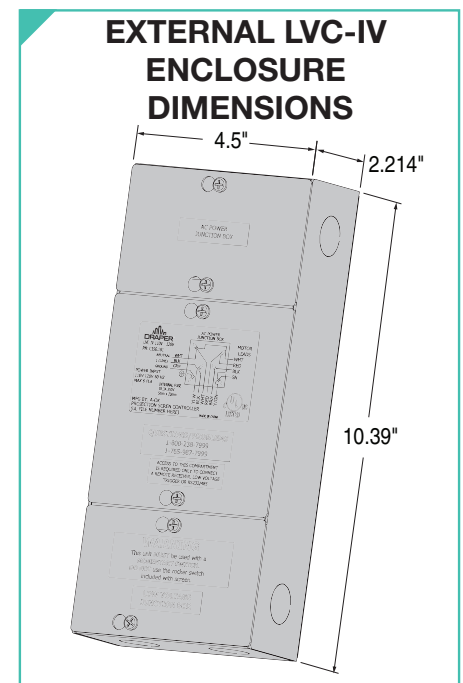
**RF (Radio Frequency) Remote Control**

**3rd Party Control**  
Control systems employing “dry” contacts or Serial Communication.



The 120V LVC-IV also used as a Single-Pole, Double-Throw dry closure to control equipment by the same means listed above.

| COMPATIBLE COMPONENTS |   | PART NO.  |
|-----------------------|---|-----------|
| IRT / R               | Infrared Remote Control (Connects to IR Port)                       | 121228    |
| WRT / R               | Radio Frequency Remote (antenna built in)                           | 121226    |
| LVC-S                 | Low-Voltage Wall Switch.  | 121225    |
|                       | Low-Voltage Wall Switch w/ Locking Cover                            | 121232    |
| KS-1                  | Power Supply Key Switch.  | 121017    |
| SP-KSM                | 3-position Momentary Key Switch<br>(Please Note: 'Stop' won't work) | 121022    |
| Auxillary Control     | Control systems employing “dry” contacts or Serial Communication.   | By Others |



|                  |   |
|------------------|---|
| <b>CONTACTS:</b> | Emulates Single-Pole, Double-Throw. Maintained for approx. 3 minutes.   |
| <b>RATING:</b>   | Input: 110-120 VAC +/- 10%, 50/60 Hz                                    |
|                  | Output: 110-120 VAC, 3.15 Amps, 50/60 Hz. Fused with 250 VAC, 3.15 Amps |
|                  | UL & c-UL recognized  |