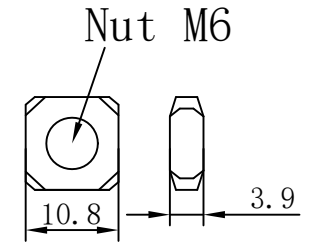
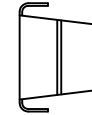
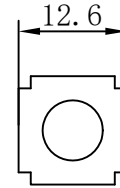
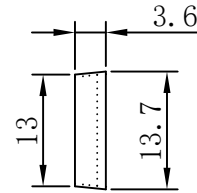
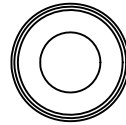
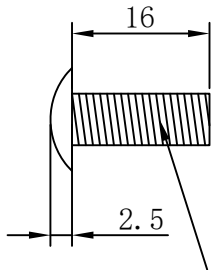


Screw M6



Nut M6



NOTES:

- 1.M6 screws with matching black plastic washers, PP-T30S material
- 2.M6\*16 large flat head screws, carbon steel 08A, electroplated white zinc
- 3.Floating nuts material: carbon steel A3, electroplated environmentally friendly
- 4.RoHS & REACH COMPLIANT

Ltemref	Quantity	Title/Name, designation, material, dimension etc	Article NO./Reference		
Designed by FLY	Checkde by HELEN	Approved by - date 2025. 12. 05	File name	Date 2025. 12. 05	Scale FREE
ANGLE:				Cage Nuts and Screws (M6)	
UNIT:MM				90-0035	Edition 1