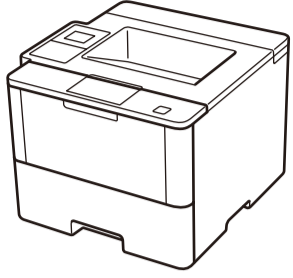


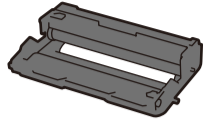


Unpack the machine and check the components



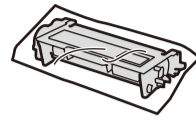
**Drum Unit and Toner Cartridge Assembly**

(pre-installed in models  
HL-L5000D /  
HL-L5100DN(T) /  
HL-L5200DW(T) /  
HL-L6200DW /  
HL-L6300DW(T) /  
HL-L6400DW (For Oceania))



**Drum Unit**

(pre-installed in models  
HL-L6250DN /  
HL-L6400DW (Except for Oceania) /  
HL-L6400DWT)



**Inbox Toner Cartridge**

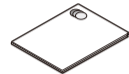
(models HL-L6250DN /  
HL-L6400DW (Except for Oceania) /  
HL-L6400DWT)



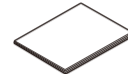
**Installation CD-ROM**



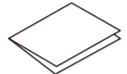
**AC Power Cord**



**Product Safety Guide**



**Reference Guide**  
(only for certain models)



**Quick Setup Guide**

**NOTE:**

- The available connection interfaces vary depending on the model.
- You must purchase the correct interface cable for the interface you want to use.

**USB cable**

We recommend using a USB 2.0 cable (Type A/B) that is no more than 2 metres long.

**Network cable**

(For HL-L5100DN(T) / HL-L5200DW(T) / HL-L6200DW / HL-L6250DN / HL-L6300DW(T) / HL-L6400DW(T))  
Use a straight-through Category 5 (or greater) twisted-pair cable.

**Parallel cable**

(For HL-L5000D)  
Use the parallel cable provided with the machine. If the parallel cable is not provided with the machine in your country or region, please contact Brother customer service or your local Brother dealer to purchase the optional parallel cable (PC-5000).

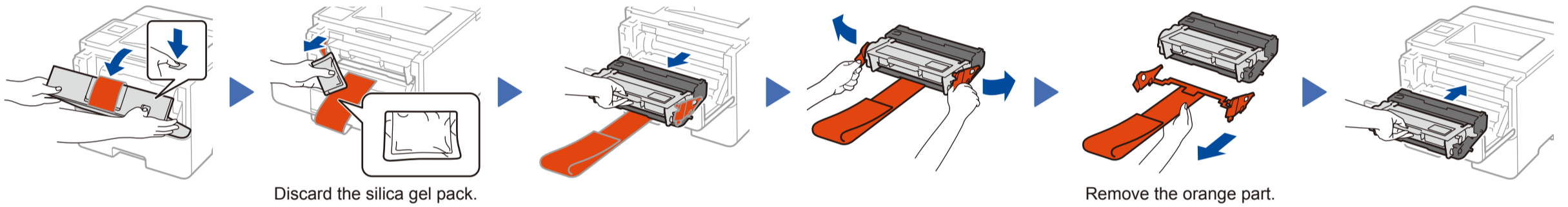
- The illustrations in this Quick Setup Guide show the HL-L5200DW and the HL-L6400DW.



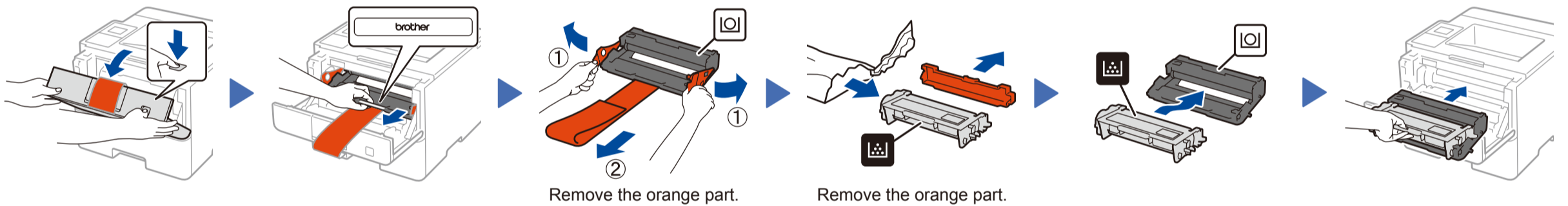
Watch our Video FAQs for help with setting up your Brother machine:  
[solutions.brother.com/videos](http://solutions.brother.com/videos).

**1 Remove the packing materials and install the drum unit and toner cartridge assembly**

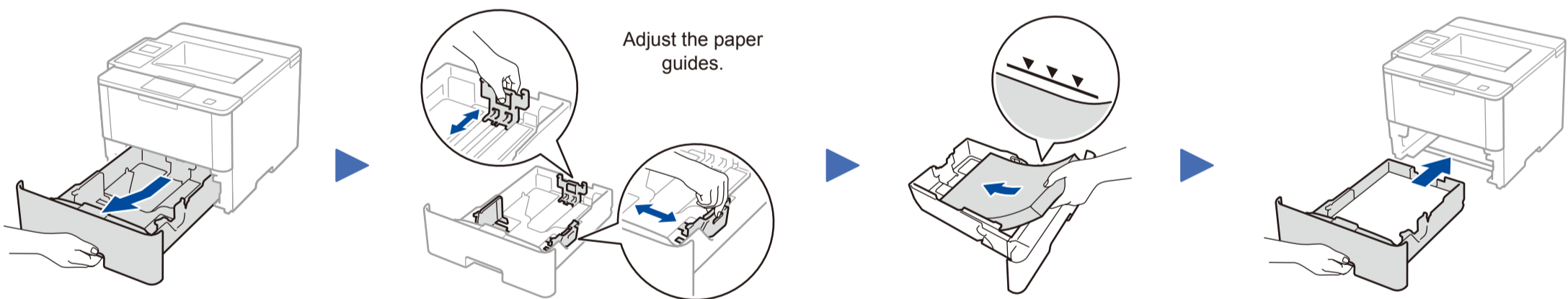
HL-L5000D / HL-L5100DN(T) / HL-L5200DW(T) / HL-L6200DW / HL-L6300DW(T) / HL-L6400DW (For Oceania)



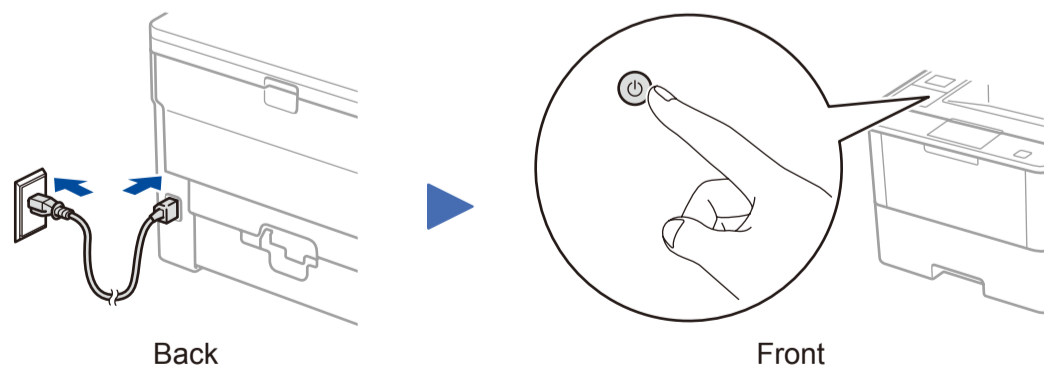
HL-L6250DN / HL-L6400DW (Except for Oceania) / HL-L6400DWT



**2 Load paper in the paper tray**



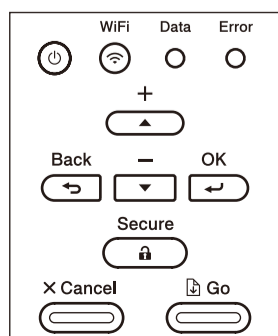
**3 Connect the power cord and turn the machine on**



**4 Select your language (if needed)**

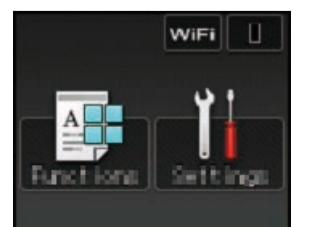
■ For LCD models

- Press ▼ or ▲ to select [General Setup], and then press OK.
- Press OK to select [Local Language].
- Press ▼ or ▲ to select your language, and then press OK.
- Press Cancel.



■ For Touchscreen models

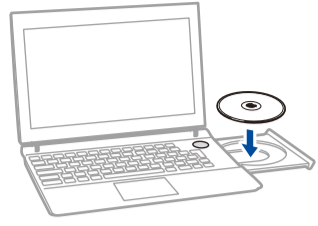
- On the machine's Touchscreen, press [Settings] > [General Setup] > [Local Language].
- Press your language.
- Press [Go].



# 5 Connect your machine and install software

Brother regularly updates firmware to add features and fix identified problems. To check for the latest firmware, visit [solutions.brother.com/up1](http://solutions.brother.com/up1).

## Windows® computer with CD-ROM drive



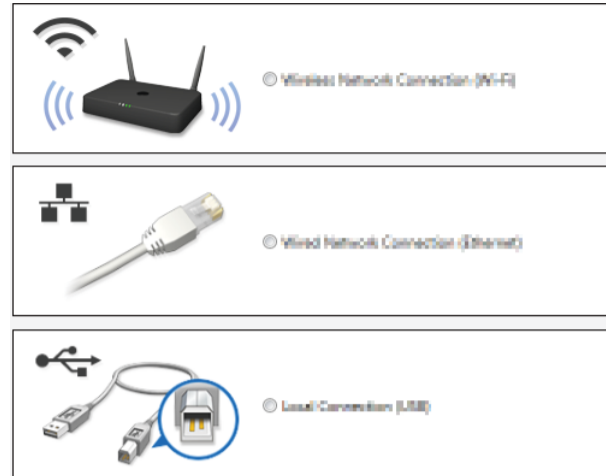
**NOTE:**  
If the Brother screen does not appear automatically, click **(Start) > Computer (My Computer)**.  
(For Windows® 8: click the **(File Explorer)** icon on the taskbar, and then go to **Computer (This PC)**.)  
Double-click the CD-ROM icon, and then double-click **start.exe**.

■ For HL-L5000D



■ For other models

Choose your Connection Type:



## Macintosh/Windows® computer without CD-ROM drive



Download the full driver and software package from the Brother Solutions Center.  
(Macintosh) [solutions.brother.com/mac](http://solutions.brother.com/mac)  
(Windows®) [solutions.brother.com/windows](http://solutions.brother.com/windows)

Follow the on-screen instructions to continue installation.

**Finish**

**NOTE:**  
If connection is unsuccessful, see **? Cannot set up your machine?** below.

## Print using your mobile device (not available for HL-L5000D)



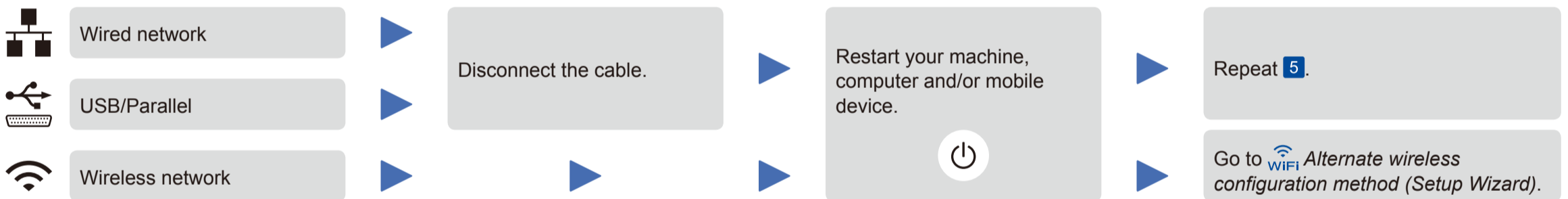
Download "Brother iPrint&Scan" to start using your machine with mobile devices.

[solutions.brother.com/ips](http://solutions.brother.com/ips)



AirPrint is available for OS X and iOS users. For more information, see the *AirPrint Guide* on your model's **Manuals** web page.  
[solutions.brother.com/manuals](http://solutions.brother.com/manuals)

## ? Cannot set up your machine?



## WiFi Alternate wireless configuration method (Setup Wizard)

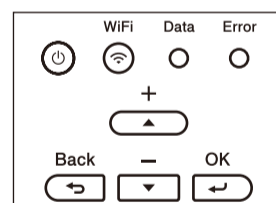
1. Restart your wireless access point/router.

2. Find the SSID and Network key.



3. Connect your machine to your wireless network.

■ For LCD models



- Press **▲** or **▼** to select the [Network] option, and then press **OK**.
- Press **▲** or **▼** to select the [WLAN] option, and then press **OK**.
- Press **▲** or **▼** to select the [Setup Wizard] option, and then press **OK**.
- When [WLAN Enable?] appears, press **▲** to select [On].

■ For Touchscreen models



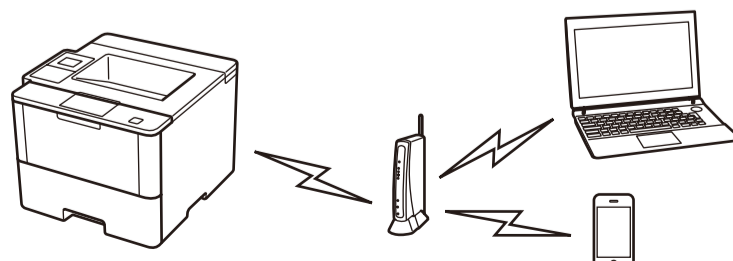
**WiFi** > [Setup Wizard] > [Yes].

4. Select the SSID.

5. Enter the Network key.

**NOTE:**  
For information on how to enter text, see the printed *Reference Guide*.

The LCD displays [Connected].



To use with your computer >>> Step 5 **Connect your machine and install software**

To use with your mobile device >>> **Print using your mobile device (not available for HL-L5000D)**

