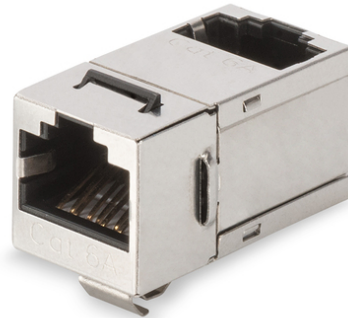


DIGITUS CAT 6A Class EA Modular Coupler, shielded, angled

DN-93910
EAN 4016032445630



CAT 6A Modular Coupler, shielded RJ45 to RJ45, 90° angled

The modular couplers from DIGITUS® are shielded and provide best performance and link quality for your network. They are equipped with 2 RJ45 sockets with the assignment 1:1 and are therefore suitable for mounting in Patch Panels.

- Transmission properties: Category 6A, Class EA
- Area of application: Up to 500 MHz, 10GBase-T
- Norms: ISO/IEC 11801 2nd Ed., EN 50173-1, EIA/TIA 568-C, 802.3af, 802.3at PoE+
- General properties:
- Suitable for 483 mm (19") cabinet mounting
- 2x RJ45 Female, 8P8C
- 360° shield coverage
- Connection 1:1
- Technical properties:
- Housing material: Zinc die-cast, nickel-plated
- RJ45 female material: ABS UL 94V-0

- RJ45 female contact: Tinned phosphor bronze, 0.5 μ gold-plated contact
- RJ45 shielding: Tinned bronze
- Conductor plate: FR4, UL 94V-0
- Physical properties:
- Insertion force: 30N max. (IEC 60603-7-5)
- Retention strength: 7.7 kg between jack and plug
- Operating temperature: -20 °C to +70 °C (ISO/IEC 11801, EN 50173-1, ANSI/TIA/EIA 568 C)
- Mating cycles female: > 750 acc. to ISO/IEC 11801, IEC 60603-7-5
- Clamp: > 200 acc. to ISO/IEC 11801, IEC 60603-7-5
- Insulation resistance: > 500 MOhm
- Contact resistance: < 20 MilliOhm
- Dielectric strength: 1000 VDC (Contact/Contact), 1500 VDC (Contact/Ground)
- Dielectric strength: 1000 VDC (Contact/Contact), 1500 VDC (Contact/Ground)

Logistics						
	Number (pcs)	Weight (kg)	Depth (cm)	Width (cm)	Height (cm)	cm³
Packaging Unit Carton	600	7.40	29.00	51.00	28.00	41,412.00
Packaging Unit Inside	100	1.23	25.00	27.00	7.00	4,725.00
Packaging Unit Single	1	0.01	2.00	4.00	1.50	12.00
Net single without Packaging	1	0.00	0.00	0.00	0.00	0.00