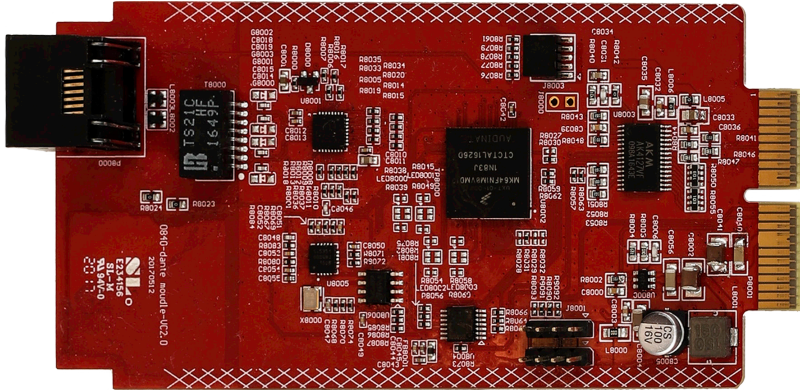


Dante / AES67 Network Card for AT-GAIN-120

AT-GAIN-NET



The Atlona AT-GAIN-NET is an audio interface card for the Gain 120 (AT-GAIN-120) amplifier. It features an AES67 and Dante™ dual-channel audio bridge, adding the capability to accept two channels over a network from Atlona OmniStream™ AV encoders, as well as a Dante or AES67-equipped DSP. The AT-GAIN-NET easily installs into the I/O expansion slot of the Gain 120.

Package Contents

- 1 x AT-GAIN-NET
- 1 x Face plate
- 1 x Installation Guide

Network Card Installation

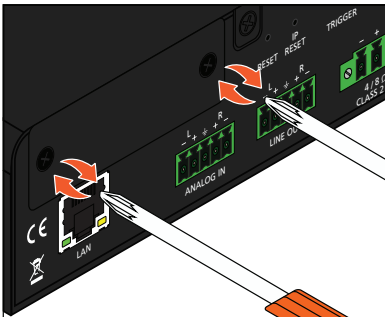


WARNING: To prevent the risk of electrocution or electric shock, always disconnect the power cord from the AT-GAIN-120 before installing or removing the AT-GAIN-NET network card.

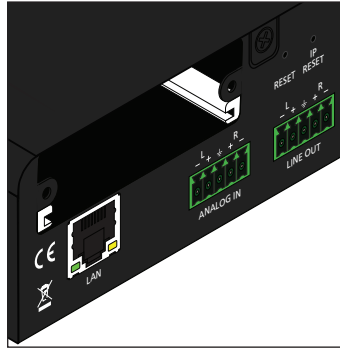
1. Disconnect the power cord from AT-GAIN-120.
2. Set the AT-GAIN-120 on a flat surface, free of obstructions. Position the AT-GAIN-120 as shown in the picture below.



3. Using a small Phillips-head screwdriver, remove the two screws holding the faceplate in place. After the faceplate is removed, set it aside. Keep the two screws to attach the included faceplate with the INPUT card.



4. Locate the plastic guides on either side of the expansion slot.



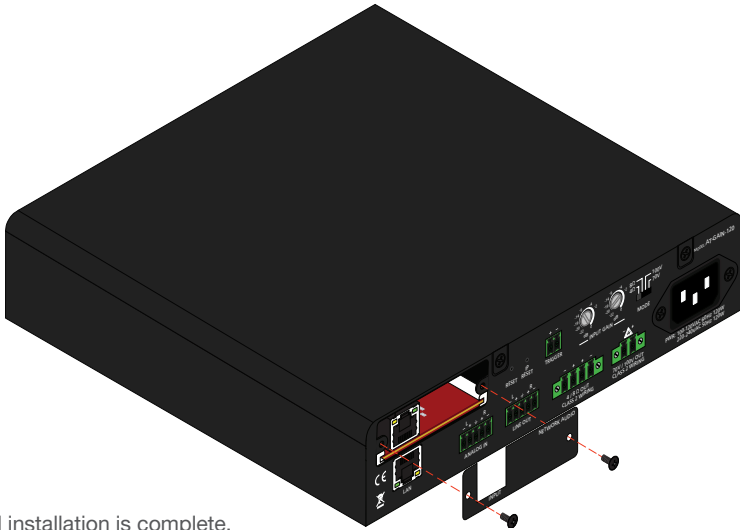
5. Carefully position the card between the upper and lower rail of each guide, and gently push the AT-GAIN-NET network card forward, until it locks in place. The card will make a small snapping sound, once the card is in place.



IMPORTANT: When handling the card, avoid touching the components. Always hold the card by the edges. Electrostatic discharge can damage components and the card.



6. Locate the included AT-GAIN-NET faceplate with the **INPUT** port and install the faceplate using the screws from Step 2, as shown below. Do not over-tighten the screws using high-torque devices, as this may cause damage to the screws or the faceplate assembly.



7. Card installation is complete.
8. Connect the power cable to the AT-GAIN-120.
9. Connect an Ethernet cable, with an encoded digital audio stream, to the INPUT port. Refer to the AT-GAIN-120 User Manual for information on configuring the network card.

