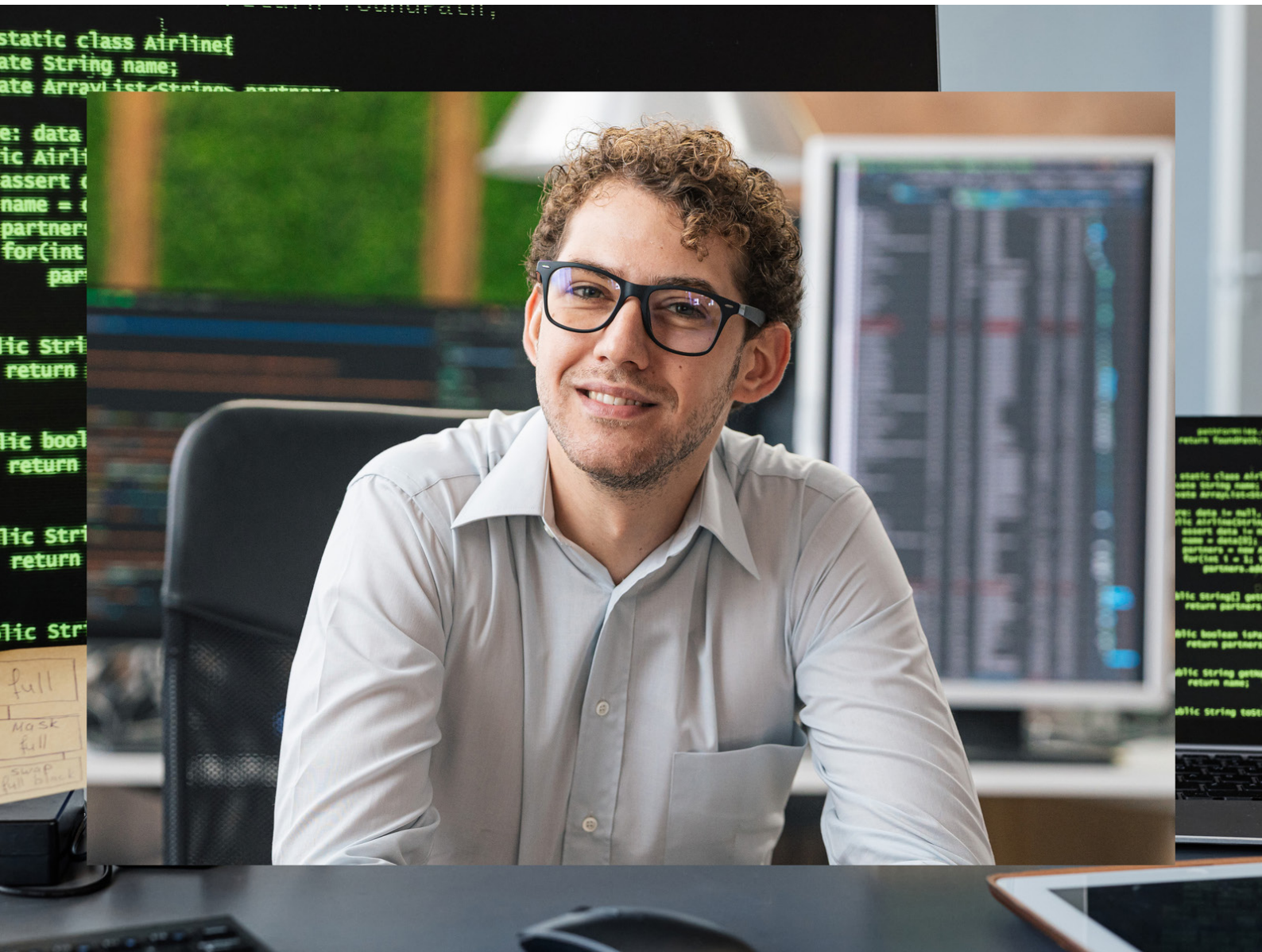
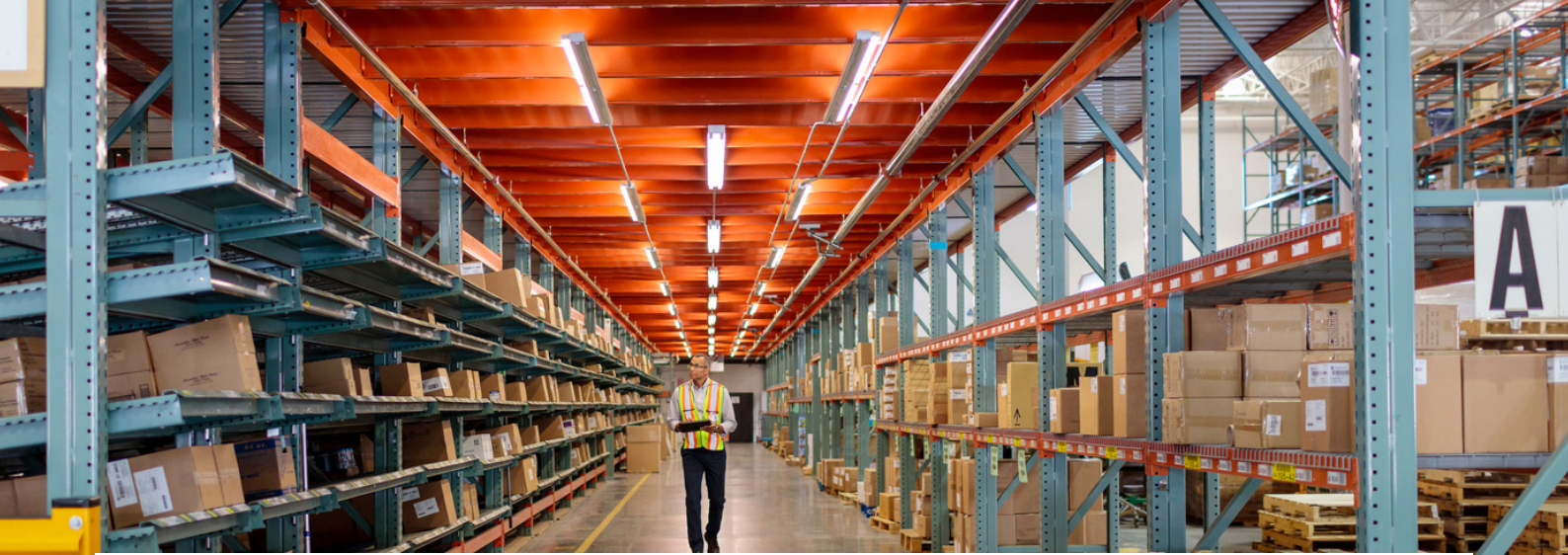


Scale data and business insights with graph analytics

HPE ProLiant Gen11 solutions for data analytics





Graph is transforming the data analytics landscape, and many organizations are accelerating their data-first modernization by implementing enterprise-scale, graph data platforms. Graph database management systems (DBMSs) are a type of NoSQL database growing in usage and popularity because, through graph analytics, they are helping businesses decode complex relationships between entities. It is becoming more important for organizations every day as the growing volume of Internet of Things (IoT) devices capture vast amounts of data that can be leveraged to uncover patterns or anomalies, leading to insights that can drive profits or save costs.

Large datasets can benefit from graph technology because of the characterization, evaluation, and prediction relevant to the relationships represented by the graphs. Graph analytics helps uncover these connections, called nodes or vertices, which can be developed from datasets such as accounts, customers, devices, groups of people, organizations, products, or locations. Some examples of data well-suited to graphs are road networks, communications networks, social networks, webpages and links, and financial transaction data.

Since graph analytics offers several advantages to overcome large and complex data challenges compared to other analytical solutions for relational databases, organizations and companies worldwide are beginning to implement graph analytics to help uncover these hidden insights across many different industries.

Graph analytics has been instrumental in:

- Uncovering product or service recommendations from ratings and purchases to increase customer retention
- Identifying fraudulent transactions to reduce shrinkage in retail
- Refining routes to save time and reduce overhead costs for logistics companies
- Identifying potential points of failure in power grids, water grids, and transportation networks to reduce downtime

With Gartner predicting that by 2026, 65% of businesses will shift their decision-making from being intuition-based to data-driven, implementing graph technologies can be a strategic asset for organizations needing to accelerate their own data journey.¹ Many data-driven organizations will seamlessly integrate technology into their data infrastructure to support graph analytics, whether it's within a specific department or spanning the entire enterprise. The ability to merge data perspectives, scale, and velocity is of utmost importance for companies to address relationship-based inquiries effectively while driving their business forward in today's competitive landscape.

¹ [gartner.com/en/newsroom/press-releases/gartner-predicts-65--of-b2b-sales-organizations-will-transition-](https://www.gartner.com/en/newsroom/press-releases/gartner-predicts-65--of-b2b-sales-organizations-will-transition-)

HPE ProLiant: Compute engineered for your hybrid world

HPE ProLiant completes your hybrid environment wherever it lives — combining a cloud operating experience and built-in security while driving next-generation performance with the engineering leadership to power insights, innovation, and competitive advantage to drive your business forward.

Expect more from your infrastructure

Future proof your business with HPE ProLiant Gen11 compute that delivers the efficiency, scalability, and economics to accelerate business outcomes while lowering TCO. Consolidate more workloads and increase ROI with the breakthrough performance of next-generation compute.

More graphics capabilities than ever before

Empower your business to innovate with advanced GPU accelerators on HPE ProLiant Gen11 ultra-scalable architecture. With more GPU density and flexibility to optimize scale, you can power a wide range of graphics and compute use cases within the data center and at the edge for artificial intelligence (AI), machine learning (ML), rendering, and data-intensive applications.

An open approach to your most demanding workloads

Grow your business at scale with an open approach to industry standards for innovation of advanced technology in the data center and at the edge, and flexible management of cloud-native workloads.

Your choice of compute matters

A new approach is needed to thrive in the age of insight and accelerate data-first modernization with a cloud operational experience everywhere. Your data is your source of business value. It's created constantly across the enterprise and contains the insights that fuel innovation and competitive advantage. Realizing that value, however, requires compute, but not just any compute. You need compute that powers the analytics that bring key perspectives to light and the workloads that put them to service for the benefit of the business and your customers. And the right choice of compute — one that delivers a cloud operating experience built from the ground up with a fundamental foundation security approach — can set you apart from the competition.

Top reasons to choose HPE ProLiant Gen11 servers

1. Future proof your business growth with next-generation compute that delivers more of everything — more cores, faster memory, and 2x I/O bandwidth from the previous generation
2. Accelerate insights and innovation with [42 world records](#) for performance and energy efficiency
3. Optimize cost, performance, and storage with flexibility and without the complexity
4. Enables a modernized compute management experience delivered through the HPE GreenLake edge-to-cloud platform that securely streamlines operations
5. Unify compute management with a centralized console for self-service operations and pivot IT resources from reactive to proactive with global visibility and insight into all compute devices
6. Bring cloud agility to distributed compute infrastructure securely with cloud-based management — it's up-to-date with the latest features, security patches, and firmware versions
7. Is engineered with a fundamental security approach to defend against increasingly complex threats through an uncompromising focus to deliver constant security advancements that are built into the HPE ProLiant DNA
8. Protect your infrastructure, workloads, and data from threats to hardware and risks from third-party software with a trusted edge-to-cloud security posture built on an HPE compute core hardened through a proven, zero trust approach to security



Recommended server solutions

HPE ProLiant DL385 Gen11 Server

The HPE ProLiant DL385 Gen11 Server with AMD 4th Gen EPYC processor is a double-socket server with a scalable 2U form factor for larger storage capacity



Base

CPU	AMD EPYC 9554P
Cores	64-core, 2.4 GHz
Memory	512 GB RAM (8 x 64 GB DIMMs)
SSD	HPE 480GB SATA 6G Read-Intensive SFF BC Multi Vendor SSD
Network controller	Broadcom BCM57414 Ethernet 10/25Gb 2-port SFP28 Adapter for HPE

Take the next steps to make your graph analytics initiative a success

See how implementing graph analytics on HPE ProLiant Gen11 servers accelerates speed to insights wherever your data lives with the performance, efficiency, and scale to empower your data teams. Request a quote today to get connected with an HPE sales specialist or channel partner.

Learn more at

[HPE ProLiant solutions and ecosystems](#)

[HPE ProLiant DL385 Gen11 Server](#)

Visit **HPE GreenLake**

 **Chat now (sales)**


**Hewlett Packard
Enterprise**

© Copyright 2023 Hewlett Packard Enterprise Development LP. The information contained herein is subject to change without notice. The only warranties for Hewlett Packard Enterprise products and services are set forth in the express warranty statements accompanying such products and services. Nothing herein should be construed as constituting an additional warranty. Hewlett Packard Enterprise shall not be liable for technical or editorial errors or omissions contained herein.

AMD is a trademark of Advanced Micro Devices, Inc. All third-party marks are property of their respective owners.
a00134370ENW