

# HPE Aruba Networking ClearPass OnGuard

Enterprise-class endpoint protection, posture assessments, and health checks

Key features

- Enhanced capabilities for endpoint compliance and control
- Supports Microsoft, Apple, and Linux operating systems
- Antivirus, firewall checks, and more
- Optional auto-remediation and quarantine capabilities
- System-wide endpoint messaging, notifications, and session control
- Centrally view the online status of all devices from the ClearPass Policy Manager platform

HPE Aruba Networking ClearPass OnGuard performs advanced endpoint posture assessments to help ensure security and compliance requirements are met prior to devices connecting to the corporate network.

As a key component of the HPE Aruba Networking ClearPass Policy Manager platform, the advanced network access control (NAC) framework in ClearPass OnGuard offers exceptional safeguards against vulnerabilities.

The following operating systems and versions are supported:

- Microsoft — Support for Windows 7 and above. Can be run as a service
- Apple — Support for macOS 10.10 and above
- Linux® — Support for Red Hat® Enterprise Linux 5 and above, Ubuntu 14.x LTS, 16.x LTS and 18.x LTS, Community Enterprise Operating System (CentOS) 5 and above, Fedora Core 24 and above, and SUSE Linux 12.x.

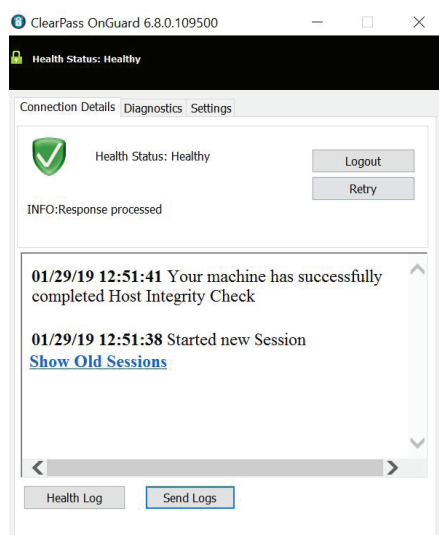
Table 1. Supported agents

	OnGuard Persistent Agent	OnGuard Dissolvable Agent	Microsoft’s NAP Agent
Microsoft	X	X	X
Apple	X	X	n/a
Linux	X*	X	n/a

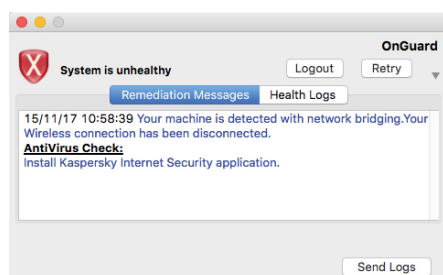
Note: Auto-remediation only supported by persistent agents

\* Persistent agent supported on Ubuntu endpoints running Ubuntu 14.x LTS, 16.x LTS and 18.x LTS, Red Hat Enterprise Linux 7, and CentOS 7





**Figure 1.** Successful wireless authentication of a Windows 10 device



**Figure 2.** Detailed macOS posture message

## The ClearPass advantage

In addition to antivirus, antispyware, and personal firewall audits performed by traditional NAC products, OnGuard agents can perform more granular posture and health checks, to help ensure a greater level of endpoint compliance and network authorization.

### Flexible deployment options

OnGuard can be deployed and configured in a variety of ways based on preference and specific infrastructure requirements. This includes the capability to deploy in an agentless configuration, utilize dissolvable agents, or take advantage of the continuous monitoring capabilities offered through a full OnGuard agent.

When running OnGuard Persistent agents, ClearPass Policy Manager can centrally send system-wide notifications and alerts and allow or deny network access based on real-time changes on the endpoint. The persistent agent also supports auto and manual remediation.

Alternatively, the web-based dissolvable agent is ideal for personal, non-IT-issued devices that connect through a captive portal and do not allow agents to be permanently installed. A one-time check at login helps ensure policy compliance. Devices not meeting compliance can be redirected to a captive portal for manual remediation.

### Automatic remediation

If unhealthy endpoints do not meet compliance requirements, the user receives a message about the endpoint status and instructions on how to achieve compliance if auto-remediation is not used.

Messages can include reasons for remediation, links to helpful URLs, and help desk contact information. ClearPass persistent agents provide the same message and remediation capabilities for 802.1X and combined environments.

### IT-managed and BYOD endpoint compliance

OnGuard Persistent and Dissolvable Agents can be used together in environments where endpoints are owned by the organization, employees, and visitors. This helps ensure that most devices are assessed and granted proper privileges before accessing the network.

### Complete endpoint visibility

To simplify troubleshooting, endpoint control, and compliance reporting, ClearPass Policy Manager allows IT to centrally manage health-check settings and policies. IT also has the ability to view endpoint activity, including user and device data for each device that connects using OnGuard agents.

### Real-time endpoint compliance

Depending on operating system type, OnGuard performs the following level of posture and health checks.

**Table 2.** OS capabilities

	Windows*	macOS*	Linux *
Installed applications	X	X	
Antivirus	X	X	X
Firewall	X	X	
Disk encryption	X	X	
Network connections	X	X	
Processes	X	X	
Patch management	X	X	
Peer to peer	X	X	
Services	X	X	X
Virtual machines	X	X	
Windows hotfixes	X		
USB devices	X	X	
File check	X	X	

## Ordering guidance

ClearPass OnGuard can be ordered through perpetual license or subscription that includes ArubaCare for the length of the subscription.

Ordering ClearPass OnGuard involves the following three steps:

- Determine the number of unique computer endpoints that will have posture/health checks performed prior to network access within your environment.
- Select the total number of OnGuard licenses.

Additional ClearPass OnGuard capacity can be purchased at any time to meet growth demands. ClearPass OnGuard is licensed on a per endpoint basis.

\* Chart represents ClearPass version 6.8 functionality.

**Disclaimer:** Not all checks are supported across operating systems and agent type.

**Table 3.** Ordering information

Part number	Description
<b>Perpetual licenses</b>	
JZ472AAE	HPE Aruba Networking ClearPass - OnGuard License 100 Endpoints E-LTU
JZ473AAE	HPE Aruba Networking ClearPass - OnGuard License 500 Endpoints E-LTU
JZ474AAE	HPE Aruba Networking ClearPass - OnGuard License 1K Endpoints E-LTU
JZ475AAE	HPE Aruba Networking ClearPass - OnGuard License 2500 Endpoints E-LTU
JZ476AAE	HPE Aruba Networking ClearPass - OnGuard License 5K Endpoints E-LTU
JZ477AAE	HPE Aruba Networking ClearPass - OnGuard License 10K Endpoints E-LTU
JZ478AAE	HPE Aruba Networking ClearPass - OnGuard License 25K Endpoints E-LTU
JZ479AAE	HPE Aruba Networking ClearPass - OnGuard License 50K Endpoints E-LTU
JZ480AAE	HPE Aruba Networking ClearPass - OnGuard License 100K Endpoints E-LTU
<b>Perpetual licenses warranty</b>	
Software	90 days*
<b>Subscription licenses (1 year)</b>	
JZ481AAE	HPE Aruba Networking ClearPass - OnGuard License 100 Endpoints 1-year Subscription E-STU
JZ482AAE	HPE Aruba Networking ClearPass - OnGuard License 500 Endpoints 1-year Subscription E-STU
JZ483AAE	HPE Aruba Networking ClearPass - OnGuard License 1K Endpoints 1-year Subscription E-STU
JZ484AAE	HPE Aruba Networking ClearPass - OnGuard License 2500 Endpoints 1-year Subscription E-STU
JZ485AAE	HPE Aruba Networking ClearPass - OnGuard License 5K Endpoints 1-year Subscription E-STU
JZ486AAE	HPE Aruba Networking ClearPass - OnGuard License 10K Endpoints 1-year Subscription E-STU
JZ487AAE	HPE Aruba Networking ClearPass - OnGuard License 25K Endpoints 1-year Subscription E-STU
JZ488AAE	HPE Aruba Networking ClearPass - OnGuard License 50K Endpoints 1-year Subscription E-STU
JZ489AAE	HPE Aruba Networking ClearPass - OnGuard License 100K Endpoints 1-year Subscription E-STU

\* Extended with support contract

Table 3. Ordering information (Continued)

Part number	Description
Subscription licenses (3 years)	
JZ490AAE	HPE Aruba Networking ClearPass - OnGuard License 100 Endpoints 3-year Subscription E-STU
JZ491AAE	HPE Aruba Networking ClearPass - OnGuard License 500 Endpoints 3-year Subscription E-STU
JZ492AAE	HPE Aruba Networking ClearPass - OnGuard License 1K Endpoints 3-year Subscription E-STU
JZ493AAE	HPE Aruba Networking ClearPass - OnGuard License 2500 Endpoints 3-year Subscription E-STU
JZ494AAE	HPE Aruba Networking ClearPass - OnGuard License 5K Endpoints 3-year Subscription E-STU
JZ495AAE	HPE Aruba Networking ClearPass - OnGuard License 10K Endpoints 3-year Subscription E-STU
JZ496AAE	HPE Aruba Networking ClearPass - OnGuard License 25K Endpoints 3-year Subscription E-STU
JZ497AAE	HPE Aruba Networking ClearPass - OnGuard License 50K Endpoints3-year Subscription E-STU
JZ498AAE	HPE Aruba Networking ClearPass - OnGuard License 100K Endpoints 3-year Subscription E-STU

Learn more at

[HPE.com/us/en/Aruba-ClearPass-Policy-Manager.html](https://HPE.com/us/en/Aruba-ClearPass-Policy-Manager.html)

Visit HPE.com

Chat now

© Copyright 2025 Hewlett Packard Enterprise Development LP. The information contained herein is subject to change without notice. The only warranties Hewlett Packard Enterprise products and services are set forth in the express warranty statements accompanying such products and services. Nothing herein should be construed as constituting an additional warranty. Hewlett Packard Enterprise shall not be liable for technical or editorial errors or omissions contained herein.

Linux is the registered trademark of Linus Torvalds in the U.S. and other countries. Red Hat is a registered trademark of Red Hat, Inc. in the United States and other countries. Microsoft and Windows are either registered trademarks or trademarks of Microsoft Corporation in the United States and/or other countries. All third-party marks are property of their respective owners.

a00037472ENW, Rev. 2

HEWLETT PACKARD ENTERPRISE

[hpe.com](https://hpe.com)

