

M55V Adjustable Height Mobile Cart For Monitors Up To 150 lbs

Heavy Duty & Ideal for Plasma, LCD, or LED Monitors

- Fits monitors with VESA patterns up to 400x400mm in both Portrait and Landscape orientations
- Continuous vertical position adjustment to 70.75"
- Heavy-duty rubber casters for smooth mobility
- Accessory options of tempered glass or metal shelves support up to 50 lbs (22.67kg) of additional components
- Lockable incremental tilt adjustment



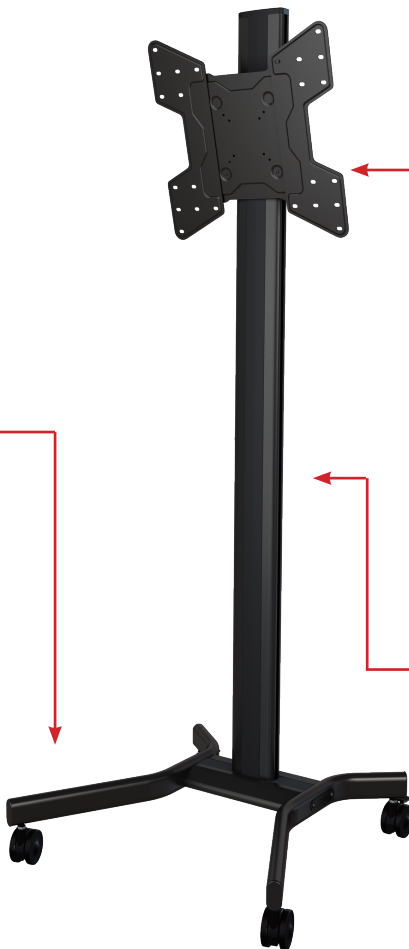
SKU	TV Size	VESA	Max Height	Max Load
M55V	32-55"	400x400mm	70.75"	150 lbs



HEAVY DUTY CASTERS AND CABLE MANAGEMENT

Rubber Casters for Smooth Mobility

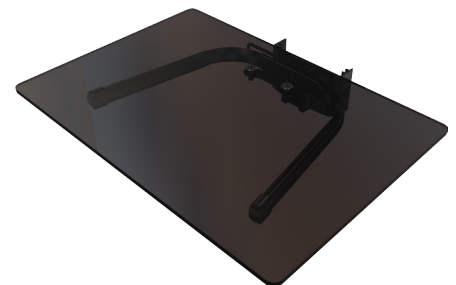
Heavy duty rubber casters provide for smooth mobility even when at full weight capacity, while an integrated cable management system provides for a clean look.



CONTINUOUS TILT

+15/-5 Degrees Tilt

The M55V mounting plate has continuous tilt of up +15°/-5° for ideal screen placement.



OPTIONAL SHELVING ACCESSORY

Adjustable Tempered Glass or Metal Shelf

With Crimson's tempered glass (MSG) or metal (MSM) attachable shelf, the S55V can support up to 50lbs of additional components.

M55V

Heavy Duty Mobile Cart

for displays between 32" to 55"

1-866-MOUNT-TV
www.crimsonav.com



Attribute	Value
TV size range	32" - 55"
Weight capacity	150lbs (68.03kg)
Max mounting pattern	400x400mm
Vertical adjustment	Continuous vertical adjustment to 70.75"
Tilt	+15°/-5° with incremental tilt lock
Optional accessories	Optional accessory glass (MSG) or metal (MSM) shelves; vertically adjustable and can be easily installed or removed without removing TV monitor
Construction	Aluminum/high-grade cold rolled steel
Product finish	Scratch resistant epoxy powder coat
Color	Black
Model number	M55V, M55VLP, M55V2LP
Product Weight	46.5lbs (21.09kg)
Warranty	10 years

Heavy duty construction makes this cart ideal for Plasma, LCD, or LED monitors up to 150 lbs. Heavy duty rubber casters ensure smooth mobility on all surfaces, and base fits through standard door openings. Fully adjustable tilt and screen for perfect screen placement.

