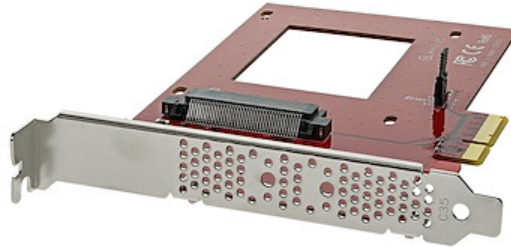


U.2 to PCIe Adapter for 2.5" U.2 NVMe SSD - SFF-8639 - x4 PCI Express 4.0 - TAA

**Product ID:** PEX4SFF8639



Get ultra-fast data access by adding an NVMe U.2 SSD to your computer. This U.2 to PCIe adapter lets you add a high-speed, U.2 (4-lane PCIe) 2.5" NVMe SSD, such as the Intel 750 Series drive, to a PC with an available x4 PCI Express expansion slot.

You can mount the PCIe U.2 drive directly onto the adapter, giving you an easy and convenient way to improve your system performance and expand overall internal storage.

The expansion card lets you take full advantage of the fast performance and compact size of PCIe U.2 internal solid-state drives. The adapter connects directly to your computer motherboard to support an NVMe U.2 PCIe-based SSD through ultra-fast x4 PCIe. With the U.2 PCIe-based drive in place, the adapter gives your computer a significant speed boost.

The expansion card is equipped with a full-profile bracket and doesn't require an adapter cable for installation, this helps to reduce clutter and simplifies system builds. The drive connects directly to the SFF-8639 connector on the adapter, and the adapter connects directly to the computer motherboard.

The adapter is compatible with PCIe 4.0 motherboards and is also backward compatible with PCIe 3.0 / 2.0 / 1.0.

## Certifications, Reports and Compatibility



## Applications

- Upgrade your data-center or enterprise-level applications with U.2 NVMe SSD capability
- Utilize the advanced performance of a PCIe U.2 NVMe 2.5 in. SSD for intensive data workloads
- Work with large files more efficiently for audio/video production and editing
- Enhance productivity for data-heavy applications, ideal for developers and content creators

## Features

- **HIGH PERFORMANCE U.2 STORAGE:** Add a 2.5 inch U.2 NVMe SSD into a PCIe 4.0 x4/x8/x16 slot in a desktop or server, enabling ultra-fast data access; Supports SFF-8639 drives up to 15mm in height; For NVMe U.2/U.3 drives only; SATA/SAS protocols not supported
- **UNIVERSAL COMPATIBILITY:** Backwards compatible with PCI Express 3.0 motherboards that have an available x4, x8, or x16 PCIe slot; U.2 Adapter works with all workstation and server operating systems such as Windows, Windows Server, and Linux
- **PREVENT OVERHEATING:** Vented full-profile bracket and a large cutout in the PCB allow for better airflow and heat dissipation, which helps maintain optimal and reliable performance while reducing potential thermal throttling
- **HASSLE-FREE SETUP:** Pre-installed full-profile bracket & included drive mounting screws enable the connection of a U.2 drive to a PCIe slot, without the need of a drive backplane or additional cables; The U.2 to PCIe Card requires no drivers or software
- **THE IT PRO'S CHOICE:** Designed and built for IT Professionals, this U.2 to PCI Express Adapter Card is backed for two years, including free lifetime 24/5 multi-lingual technical assistance

---

### Hardware

|                           |                            |
|---------------------------|----------------------------|
| Warranty                  | 2 Years                    |
| Fan(s)                    | No                         |
| Interface                 | PCI Express                |
| Bus Type                  | PCI Express                |
| Number of Drives          | 1                          |
| Drive Size                | 2.5in                      |
| Compatible Drive Types    | U.2 (PCIe, NVMe, SFF-8639) |
| Drive Installation        | Fixed                      |
| Supported Drive Height(s) | 15mm                       |

12.5mm

9.5mm

7mm

5mm

---

**Performance**

Hardware Raid Supported No

Hot Swap Capability No

---

**Connector(s)**

Drive Connectors 1 - U.2 (PCIe, NVMe, SFF-8639)

Host Connectors 1 - PCI Express x4

---

**Software**

OS Compatibility OS independent; No software or drivers required

---

**Special Notes / Requirements**

Note Some U.2 drives make use of a feature called PWDIS which allows for remote power cycling of drives. Only Rev 03 and up of the PEX4SFFD8639 support this feature and work with drives that use it.

---

**Indicators**

LED Indicators 1 - Activity Terminal/Header

---

**Environmental**

Operating Temperature 5C to 50C (41F to 122F)

Storage Temperature -25C to 70C (-13F to 158F)

Humidity 15% ~ 90% RH

---

**Physical Characteristics**

Color Red

Material Steel

Product Length 6.5 in [16.5 cm]

Product Width 4.8 in [12.2 cm]

|                   |                 |
|-------------------|-----------------|
| Product Height    | 0.9 in [2.2 cm] |
| Weight of Product | 2.3 oz [65 g]   |

---

**Packaging Information**

|                           |                  |
|---------------------------|------------------|
| Package Quantity          | 1                |
| Package Length            | 6.2 in [15.8 cm] |
| Package Width             | 8.6 in [21.8 cm] |
| Package Height            | 1.9 in [4.8 cm]  |
| Shipping (Package) Weight | 5.5 oz [156.0 g] |

---

**What's in the Box**

|                     |                           |
|---------------------|---------------------------|
| Included in Package | 1 - drive adapter card    |
|                     | 4 - drive-mounting screws |
|                     | 1 - quick-start guide     |

---

**Warranty Information**

|          |         |
|----------|---------|
| Warranty | 2 Years |
|----------|---------|

---

***\*Product appearance and specifications are subject to change without notice.***