

## Secure iPad Enclosure with Surface Mount

SECTBLTPOS



\*actual product may vary from photos

FR: Guide de l'utilisateur - [fr.startech.com](http://fr.startech.com)  
DE: Bedienungsanleitung - [de.startech.com](http://de.startech.com)  
ES: Guía del usuario - [es.startech.com](http://es.startech.com)  
NL: Gebruiksaanwijzing - [nl.startech.com](http://nl.startech.com)  
PT: Guia do usuário - [pt.startech.com](http://pt.startech.com)  
IT: Guida per l'uso - [it.startech.com](http://it.startech.com)

For the latest information, technical specifications, and support for this product, please visit [www.startech.com/SECTBLTPOS](http://www.startech.com/SECTBLTPOS).

# Table of Contents

<b>Introduction</b> .....	<b>1</b>
Packaging contents.....	1
<b>Product diagram</b> .....	<b>3</b>
Front view .....	3
Rear view .....	3
<b>Assemble the iPad enclosure</b> .....	<b>4</b>
Attach the pads to the plates.....	4
Insert an iPad .....	7
Attach the iPad enclosure to a wall .....	8
Attach the iPad enclosure to a table or desk.....	9
Set up the iPad enclosure on a table or desk.....	10
Attach the iPad enclosure to a universal VESA mount .....	11
<b>Technical support</b> .....	<b>12</b>
<b>Warranty information</b> .....	<b>12</b>

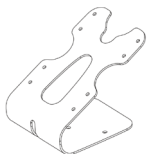
# Introduction

The SECTBLTPOS provides a secure way to mount your iPad to a table, wall, or standard VESA monitor mount. You can use the SECTBLTPOS to create a secure point-of-sale system, an interactive marketing kiosk, or an educational display.

The SECTBLTPOS is designed to be used with the iPad, iPad 2, iPad (3<sup>rd</sup> generation), iPad (4<sup>th</sup> generation), or the iPad Air.

## Packaging contents

1



Mounting bracket

Qty: One

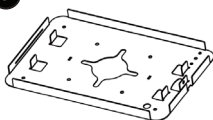
2



Front plate

Qty: One

3



Rear plate

Qty: One

4



Keys

Qty: Two

5



19x16x3 mm EVA pads

Qty: Four

6



12x100x15 mm EVA pads

Qty: Two

7



25x100x15 mm foam pads

Qty: Two

8



M4x8 mm hex screws

Qty: Four

9



2.5 mm Allen key

Qty: One

10



45x15x2 mm EVA pads  
Qty: Eight

11



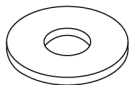
12.7x2 mm rubber pads  
Qty: Four

12



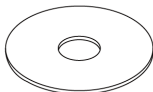
5x20 mm self-tapping screws  
Qty: Three

13



15.4x5.0x2.0t flat washers  
Qty: Three

14



35x1.0t flat washers  
Qty: Two

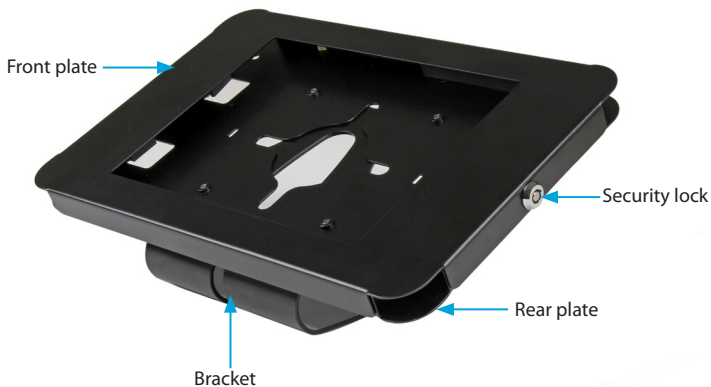
15



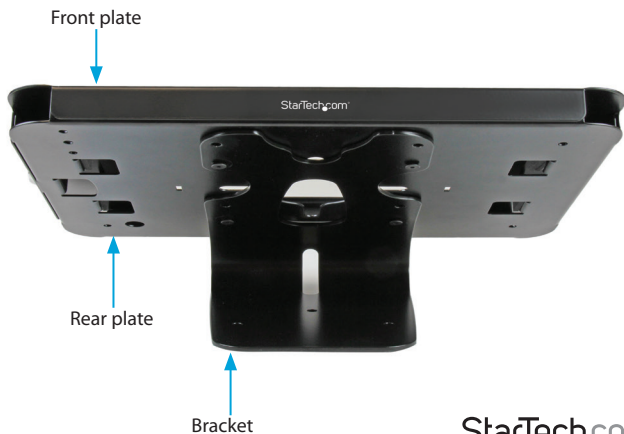
Instruction manual  
Qty: One

# Product diagram

## Front view



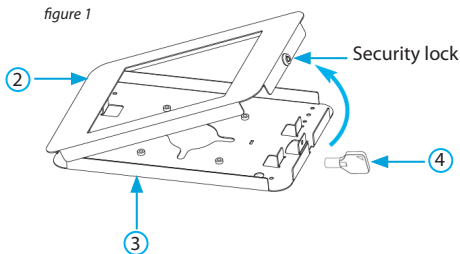
## Rear view



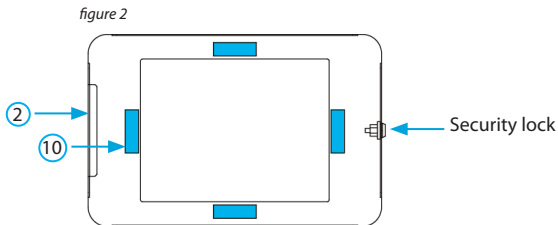
# Assemble the iPad enclosure

## Attach the pads to the plates

1. Use one of the security keys (4) to unlock the plates.
2. Remove the front plate (2) from the rear plate (3) (*figure 1*).

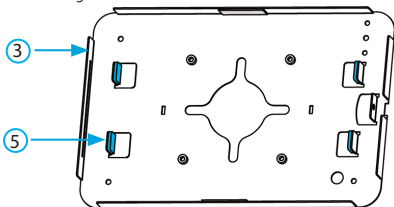


3. Turn over the front plate.
4. Remove the backing from four of the 45x15x2 mm EVA pads (10).
5. On the front plate, affix a pad in the center of each of the four sides of the rectangular-shaped opening (*figure 2*).



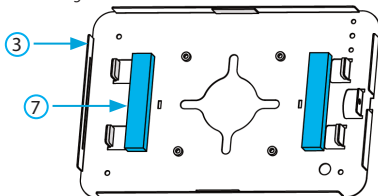
6. Remove the backing from the four 19x16x3 mm EVA pads (5).
7. On the rear plate, affix a pad on the inside of each of the tabs so that the pads are on the side of the tabs closest to the center of the plate (*figure 3*).

figure 3



8. Remove the backing from the two 25x100x15 mm foam pads (7).
9. On the rear plate, affix the pads in front of the tabs on the sides closest to the center of the plate (figure 4).

figure 4



10. Depending on the version of iPad that you're using, do one of the following:
  - If you're using an iPad (1<sup>st</sup> generation), remove the backing from two of the 45x15x2 mm EVA pads (10). On the rear plate, affix a pad to each of the raised edges on the long sides of the plate (figure 5).
  - If you're using an iPad 2, iPad (3<sup>rd</sup> generation), or iPad (4<sup>th</sup> generation), remove the backing from four of the 45x15x2 mm EVA pads (10). On the rear plate, affix a pad to each of the raised edges on the long sides of the plate. Affix a second pad on top of each of the pads that you just attached, so that there are two pads on each of the raised edges on the long sides of the plate (figure 6).
  - If you're using an iPad Air, remove the backing from the two 12x100x15 mm EVA pads (6). Affix the pads on the rear plate, flush against the raised edges on the long sides of the plate (figure 7).

figure 5

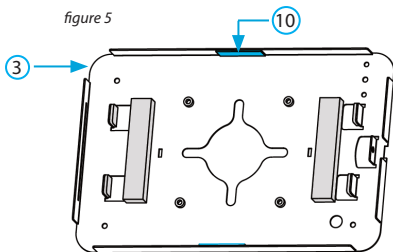


figure 6

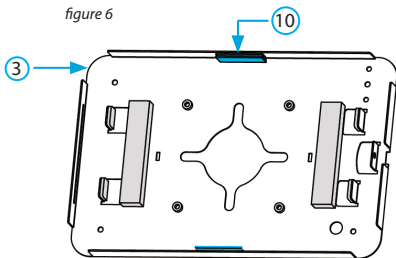
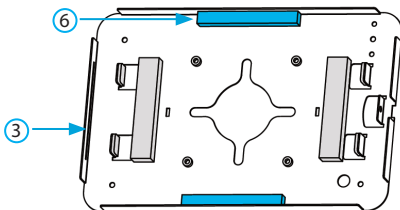


figure 7





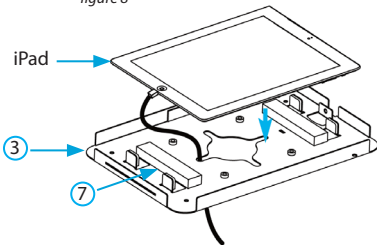
## Insert an iPad

To prevent scratching, you should handle the iPad with care when you insert it into the tablet holder.

**Note:** Make sure that all of the necessary cables are plugged into the iPad before you insert it into the SECTBLTPOS.

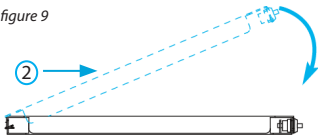
1. Thread the iPad cables through the hole in the bottom of the rear plate (3).
2. Place the iPad in the rear plate so that it's sitting on the two 25x100x15 mm foam pads (7) (*figure 8*).

*figure 8*



3. Place the front plate (2) over the iPad (*figure 9*).

*figure 9*



4. To lock the front and rear plates together, press the button in the middle of the lock on the side of the plate (*figure 10*).

*figure 10*



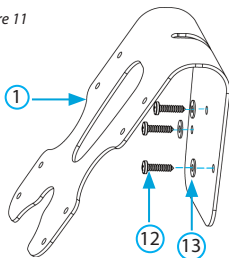
## Attach the iPad enclosure to a wall

1. Line up the holes on the mounting bracket with the four holes on the back of the rear plate (3).
2. Use the four M4x8 mm hex screws (8) and the 2.5 mm Allen key (9) to attach the mounting bracket to the rear plate.
3. Make three holes in the wall in the location where you want to attach the SECTBLTPOS.

**Tip!** To make sure that the holes are in the right location and are spaced correctly, hold the mounting bracket up to the wall and use a pencil to trace the holes in the mounting bracket onto the wall.

4. Line up the holes in the bottom of the mounting bracket with the holes in the wall.
5. Insert the three 5x20 mm self-tapping screws (12) through the three 15.4x5.0x2.0t flat washers (13), the holes in the bottom of the mounting bracket, and into the holes in the wall (figure 11).
6. Tighten as necessary.

figure 11



## Attach the iPad enclosure to a table or desk

You have the option to attach the SECTBLTPOS to a table or desk in a fixed position or one that rotates.

1. Line up the holes on the mounting bracket (1) with the four holes on the back of the rear plate (3).
  2. Use the four M4x8 mm hex screws (8) and the 2.5 mm Allen key (9) to attach the mounting bracket to the rear plate.
  3. Do one of the following:
    - If you want to be able to rotate the SECTBLTPOS, make one hole in the top of the table or desk that you want to attach the SECTBLTPOS to.
    - If you want the SECTBLTPOS to be fixed in place, make three holes in the top of the table or desk that you want to attach the SECTBLTPOS to.
- Tip!** To make sure that the holes are in the right location, place the mounting bracket on the table or desk and use a pencil to trace the holes in the mounting bracket onto the desk or table.
4. Line up the holes in the bottom of the mounting bracket with the holes on the top of the table or desk.
  5. Do one of the following:
    - If you want to be able to rotate the SECTBLTPOS, insert one of the 5x20 mm self-tapping screws (12) through one of the 15.4x5.0x2.0t flat washers (13), the top hole in the bottom of the mounting bracket, the two 35x1.0t flat washers (14), and into the hole on the top of the table or desk (*figure 12*).
    - If you want the SECTBLTPOS to be fixed in place, insert the three 5x20 mm self-tapping screws (12) through the three 15.4x5.0x2.0t flat washers (13), the holes in the bottom of the mounting bracket, and into the holes on the top of the table or desk (*figure 13*).
  6. Tighten as necessary.

figure 12

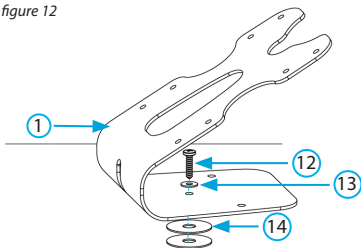
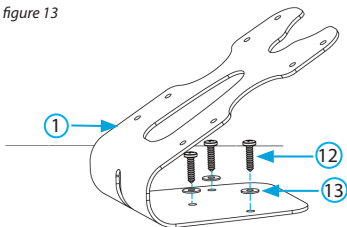


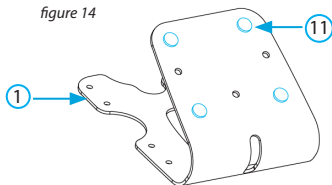
figure 13



## Set up the iPad enclosure on a table or desk

Remove the backing from the four 12.7x2 mm rubber pads (11) and affix the pads to the bottom of the mounting bracket (1) (figure 14).

figure 14

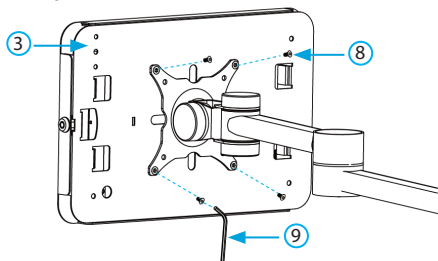


1. Line up the holes on the mounting bracket with the four holes on the back of the rear plate (3).
2. Use the four M4x8 mm hex screws (8) and the 2.5 mm Allen key (9) to attach the mounting bracket to the rear plate.
3. Place the SECTBLTPOS on the top of a table or desk.

## Attach the iPad enclosure to a universal VESA mount

1. Line up the universal VESA mount with the four holes on the back of the rear plate (3).
2. Use the four M4x8 mm hex screws (8) and the 2.5 mm Allen key (9) to attach the VESA mount to the rear plate (*figure 15*).
3. Tighten as necessary.

*figure 15*



# Technical support

StarTech.com's lifetime technical support is an integral part of our commitment to provide industry-leading solutions. If you ever need help with your product, visit [www.startech.com/support](http://www.startech.com/support) and access our comprehensive selection of online tools, documentation, and downloads.

For the latest drivers/software, please visit [www.startech.com/downloads](http://www.startech.com/downloads)

## Warranty information

This product is backed by a five-year warranty.

StarTech.com warrants its products against defects in materials and workmanship for the periods noted, following the initial date of purchase. During this period, the products may be returned for repair, or replacement with equivalent products at our discretion. The warranty covers parts and labor costs only. StarTech.com does not warrant its products from defects or damages arising from misuse, abuse, alteration, or normal wear and tear.

### Limitation of Liability

In no event shall the liability of StarTech.com Ltd. and StarTech.com USA LLP (or their officers, directors, employees or agents) for any damages (whether direct or indirect, special, punitive, incidental, consequential, or otherwise), loss of profits, loss of business, or any pecuniary loss, arising out of or related to the use of the product exceed the actual price paid for the product. Some states do not allow the exclusion or limitation of incidental or consequential damages. If such laws apply, the limitations or exclusions contained in this statement may not apply to you.

### Use of Trademarks, Registered Trademarks, and other Protected Names and Symbols

This manual may make reference to trademarks, registered trademarks, and other protected names and/or symbols of third-party companies not related in any way to StarTech.com. Where they occur these references are for illustrative purposes only and do not represent an endorsement of a product or service by StarTech.com, or an endorsement of the product(s) to which this manual applies by the third-party company in question. Regardless of any direct acknowledgement elsewhere in the body of this document, StarTech.com hereby acknowledges that all trademarks, registered trademarks, service marks, and other protected names and/or symbols contained in this manual and related documents are the property of their respective holders.

Hard-to-find made easy. At StarTech.com, that isn't a slogan. It's a promise.

StarTech.com is your one-stop source for every connectivity part you need. From the latest technology to legacy products — and all the parts that bridge the old and new — we can help you find the parts that connect your solutions.

We make it easy to locate the parts, and we quickly deliver them wherever they need to go. Just talk to one of our tech advisors or visit our website. You'll be connected to the products you need in no time.

Visit [www.startech.com](http://www.startech.com) for complete information on all StarTech.com products and to access exclusive resources and time-saving tools.

*StarTech.com is an ISO 9001 Registered manufacturer of connectivity and technology parts. StarTech.com was founded in 1985 and has operations in the United States, Canada, the United Kingdom and Taiwan servicing a worldwide market.*