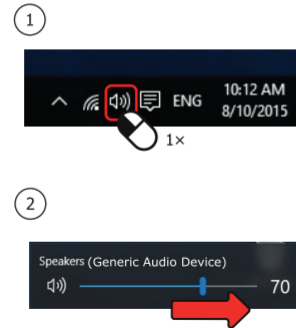


## 5. Installation - Windows 10/8/7

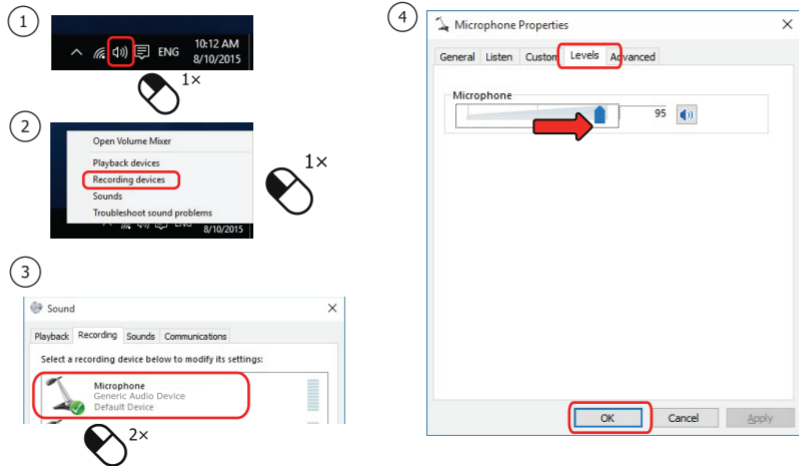
### Windows 8



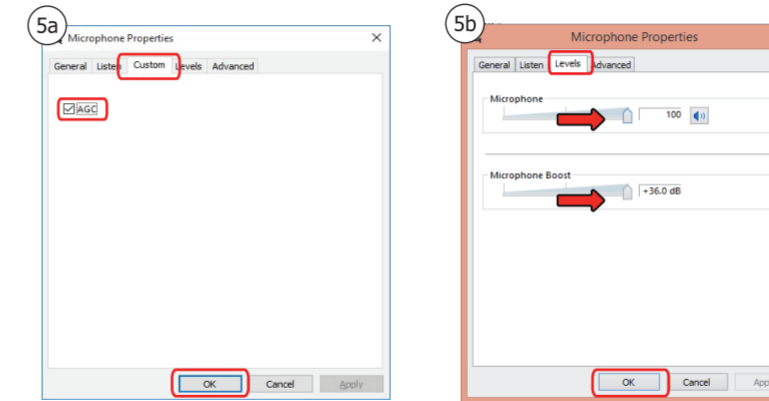
### Windows 10/7



## 6. Installation - Windows 10/8/7



## 7. Installation - Windows 10/8/7



Frequently asked questions [www.trust.com/21046/faq](http://www.trust.com/21046/faq)

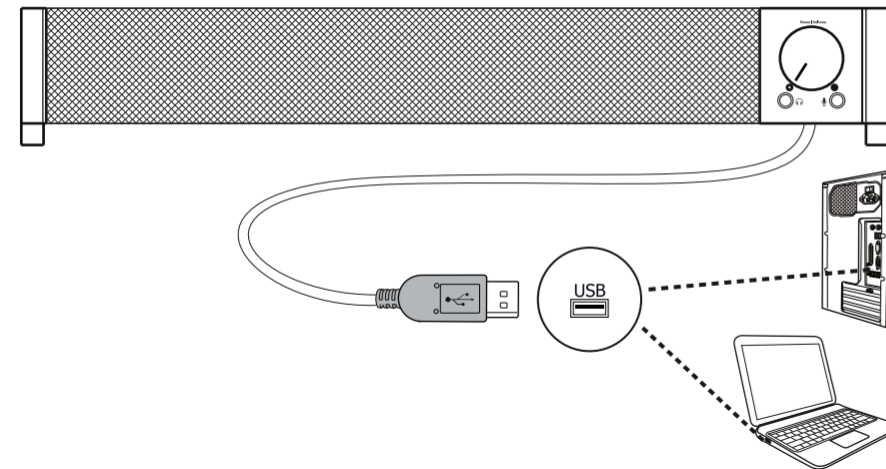
Trust International BV, Laan van Barcelona 600, 3317DD, Dordrecht, NL © 15-01-2017 Trust International B.V. All rights reserved.

**Trust**  
**SOUND**  
**BAR**

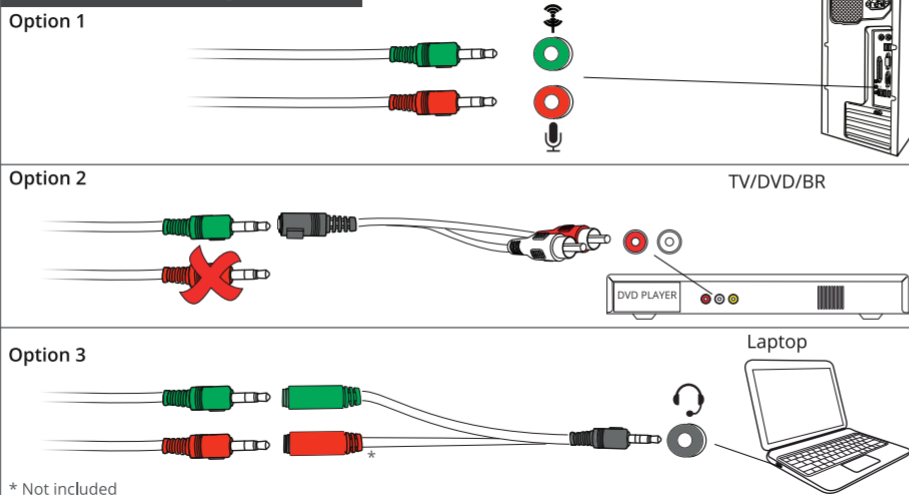


Quick Installation Guide

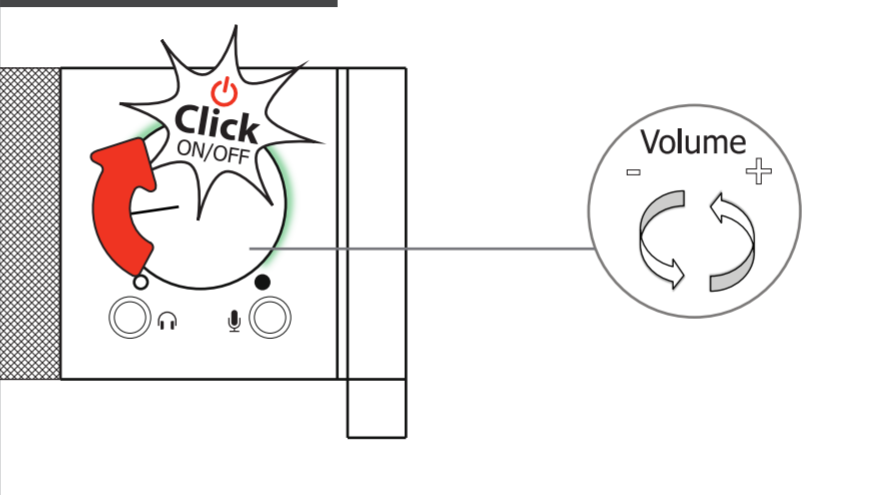
## 1. Connecting USB power



## 2. Connecting audio



## 3. Volume control



## 4. Other connections

