

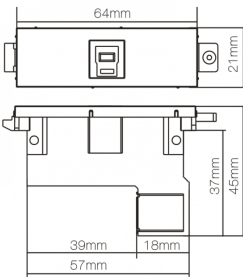
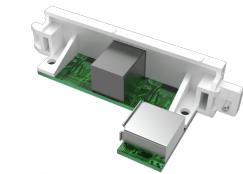
TC3 USB-B to USB-A Module

TC3 USBB EU SAP: 3446581 US SAP: 12980831

vav.link/tc3_usbb

"A" type socket on the rear as found on a laptop chassis
"B" type socket on the front as found on a printer chassis
Occupies 1 module space
USB 3.0

This module is part of Vision's Techconnect connectivity faceplate family.



Fixes to Surround

Techconnect modules fix into a surround, which in turn fixes to a backbox, mudring (for hollow walls), or a table faceplate.

Future-proof

If you break a module or need to change it in the future, just replace that part - not the entire faceplate.

Flexible

Get to site and the client changes what they want on their AV faceplate? No problem.

Strong

Techconnect parts are robust for the rigours of every day use. They include strengthening ribs and reinforcing where required.

Proven

For over 15 years Techconnect has improved and developed into one of the most popular AV faceplates in the world.

VISION

IMAGE

Product Images

ZIP 2.86 MB

files.visionaudiovisual.com/products/TC3_USBB/images/TC3_USBB.zip

Image 2823

PNG 542.58 KB

files.visionaudiovisual.com/products/TC3_USBB/images/TC3_USBB-e1455077912823.png

Front angle 1

PNG 956.04 KB

files.visionaudiovisual.com/products/TC3_USBB/images/TC3_USBB_front_angle-1.png

Rear angle 1

PNG 1.47 MB

files.visionaudiovisual.com/products/TC3_USBB/images/TC3_USBB_rear_angle-1.png

Product Images

PNG 10.09 KB

files.visionaudiovisual.com/products/TC3_USBB/images/TC3-USBB.png

V2 config

JPEG 17.38 KB

files.visionaudiovisual.com/products/TC3_USBB/images/TC3_USBB_v2_config.jpg

SPECIFICATIONS

COLOR

White

MATERIAL

ABS Plastic

PRODUCT DIMENSIONS

64 x 21 x 45 mm / 2.52" x 0.83" x 1.77"

PRODUCT WEIGHT

tbc

PACKAGED WEIGHT

tbc

PACKAGED DIMENSIONS

tbc

PART NUMBER

TC3 USBB [EU SAP:3446581 / US SAP: 12980831]

The logo for VISION, featuring the word "VISION" in a bold, white, sans-serif font. The letter "O" is stylized with a white play button icon inside it. The logo is set against a dark green background that is part of a larger abstract geometric design at the bottom of the page.