

# DIGITUS® CAT 6 Class E Modular coupling, shielded

DN-93613-1

EAN 4016032266846



### CAT 6 modular coupler, shielded RJ45 to RJ45, for panel connection

The modular couplers from DIGITUS® are shielded and offer excellent performance and connection quality for your network. Equipped with 2 RJ45 sockets in the 1:1 assignment, they are suitable for patch panel mounting.

- Transmission property: Category 6
- Application areas: Up to 250 MHz, 1GBase-T
- Standards: ISO/IEC 11801 2nd Ed., EN 50173-1, EIA/TIA 568-C, 802.3af, 802.3at PoE+
- General properties:
- Suitable for 483 mm (19") rack mounting
- 2x RJ45 sockets, 8P8C
- 360° shield contacting
- 1:1 Occupied
- Technical features:
- Housing material: Zinc die-cast, nickel-plated
- RJ45 socket material: ABS UL 94V-0
- Contact RJ45 socket: Nickel-plated phosphor bronze, gold-plated contact

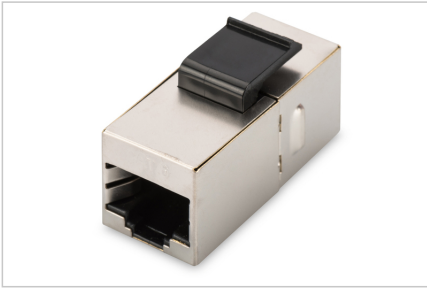
- RJ-45 shielding: Nickel-plated bronze
- Printed circuit board: FR4, UL 94V-0
- Physical properties:
- Insertion force: 30N max. (IEC 60603-7-5)
- Tensile load: 7.7 kg between socket and plug
- Operating temperature: -20° C to +70 °C (ISO/IEC 11801, EN 50173-1, ANSI/TIA/EIA 568 C)
- Socket mating cycle: > 750 acc. to ISO/IEC 11801, IEC 60603-7-5
- In accordance with IEC 60512-5, IEC 60512-6-5
- Terminal: > 200 acc. to ISO/IEC 11801, IEC 60603-7-5
- Core receptacle: 22-26 AWG solid and stranded conductors
- Insulation resistance: > 500 MOhm
- Contact resistance: < 20 milliOhms
- Dielectric strength: 1000 VDC (contact/contact), 1500 VDC (contact/ground)

### Attributes

- Category: CAT 6

Logistics						
	Number (pcs)	Weight (kg)	Depth (cm)	Width (cm)	Height (cm)	cm³
Packaging Unit Carton	1000	11.46	30.00	55.00	27.00	44,550.00
Packaging Unit Inside	100	1.15	14.00	25.50	10.50	3,748.50
Packaging Unit Single	1	0.01	9.00	12.00	1.60	172.80
Net single without Packaging	1	0.01	1.40	3.30	1.60	0.00

**More images:**



**Safety notes**

- Protect product from moisture
- Avoid antistatic charging when installing the product
- Observe the specifications of the raw cable manufacturer during installation

**EU responsible person**

EU based economic operator ensuring the product complies with the required regulations.

ASSMANN Electronic GmbH  
Auf dem Schüffel 3  
Lüdenscheid, Germany  
<https://www.assmann.com>  
[info@assmann.com](mailto:info@assmann.com)