

2/4/8 Port USB to Serial Adapter Hub with COM Retention

ICUSB2322I

ICUSB2324I

ICUSB2328I



*ICUSB2322I Shown

DE: Bedienungsanleitung - de.startech.com

FR: Guide de l'utilisateur - fr.startech.com

ES: Guía del usuario - es.startech.com

IT: Guida per l'uso - it.startech.com

NL: Gebruiksaanwijzing - nl.startech.com

PT: Guia do usuário - pt.startech.com

For the most up-to-date information, please visit: www.startech.com

FCC Compliance Statement

This equipment has been tested and found to comply with the limits for a Class B digital device, pursuant to part 15 of the FCC Rules. These limits are designed to provide reasonable protection against harmful interference in a residential installation. This equipment generates, uses and can radiate radio frequency energy and, if not installed and used in accordance with the instructions, may cause harmful interference to radio communications. However, there is no guarantee that interference will not occur in a particular installation. If this equipment does cause harmful interference to radio or television reception, which can be determined by turning the equipment off and on, the user is encouraged to try to correct the interference by one or more of the following measures:

- Reorient or relocate the receiving antenna.
- Increase the separation between the equipment and receiver.
- Connect the equipment into an outlet on a circuit different from that to which the receiver is connected.
- Consult the dealer or an experienced radio/TV technician for help.

Use of Trademarks, Registered Trademarks, and other Protected Names and Symbols

This manual may make reference to trademarks, registered trademarks, and other protected names and/or symbols of third-party companies not related in any way to StarTech.com. Where they occur these references are for illustrative purposes only and do not represent an endorsement of a product or service by StarTech.com, or an endorsement of the product(s) to which this manual applies by the third-party company in question. Regardless of any direct acknowledgement elsewhere in the body of this document, StarTech.com hereby acknowledges that all trademarks, registered trademarks, service marks, and other protected names and/or symbols contained in this manual and related documents are the property of their respective holders.

Table of Contents

Introduction	1
Packaging Contents	1
System Requirements.....	1
ICUSB2322I	2
Front View	2
Rear View.....	2
ICUSB2324I	3
Front View	3
Rear View.....	3
ICUSB2328I	4
Front View	4
Rear View.....	4
Installation	5
Hardware Installation	5
Windows 2000/ XP/ Server 2003	5
Windows Vista/ 7/ 8 / Server 2008 R2	6
Verifying Installation.....	7
Windows 2000/ XP/ Vista/ 7 / 8	7
Pinout	7
Specifications	8
Technical Support	9
Warranty Information	9

Introduction

The ICUSB2322I / ICUSB2324I / ICUSB2328I 2/4/8 Port Industrial Wall Mountable USB to Serial Hub with DIN Rail Clips converts a single USB port into two/four/eight RS232 serial ports allowing you to connect to, monitor and control your serial devices.

Rugged metal construction, sturdy wall-mount brackets and included DIN Rail clips (Top-Hat) provide versatile mounting options and a robust solution for both harsh industrial environments and simple desktop installations.

This USB powered adapter also retains assigned serial COM port values once connected, allowing the same values to be automatically reassigned to the ports provided by the adapter.

Packaging Contents

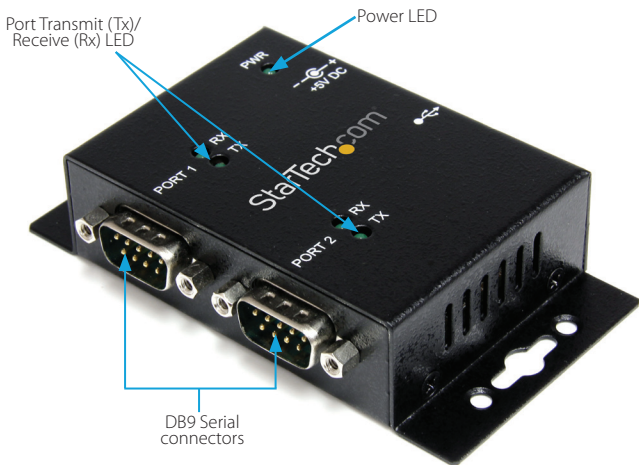
- 1 x USB to RS-232 Serial Adapter
- 1 x 6 ft USB A to B cable
- 1 x DIN Rail Mounting Kit
- 1 x Driver CD
- 1 x Instruction Manual

System Requirements

- USB enabled computer with available USB port
- Microsoft® Windows® 2000/ XP/ Server 2003/ Vista/ Server 2008 R2/ 7 /8 (32/64-bit), or Windows CE 4.2/ 5.0/ 6.0, or Apple® Mac OS® X, or Linux® kernel 2.4.x/ 2.6.x

ICUSB2322I

Front View

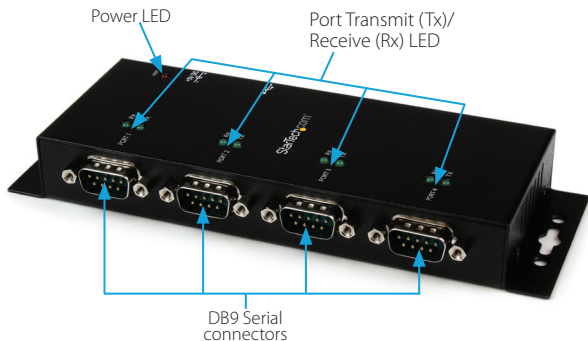


Rear View

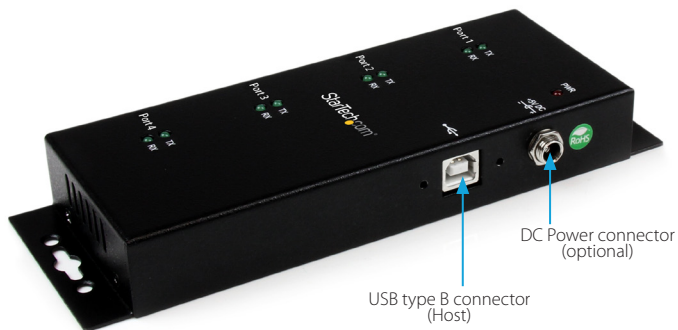


ICUSB2324I

Front View



Rear View

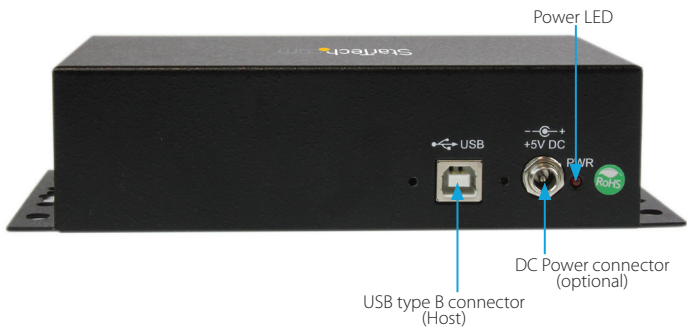


ICUSB2328I

Front View



Rear View

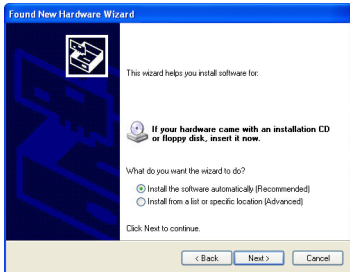
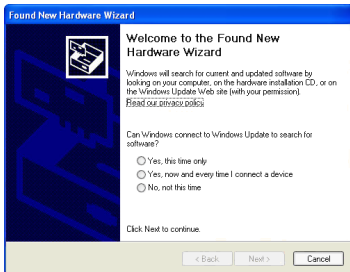


Installation

Hardware Installation

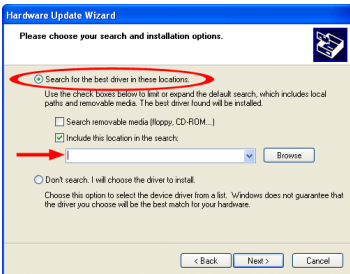
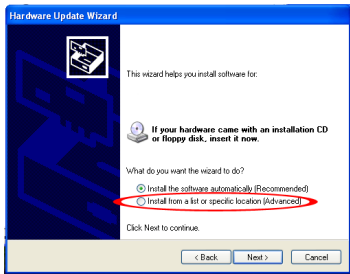
Windows 2000/ XP/ Server 2003

1. Connect the USB cable from the Serial Adapter to a USB port on the computer.
2. When the Found New Hardware wizard appears on the screen, insert the Driver CD into your CD/DVD drive. If you are prompted to connect to Windows Update, please select the "No, not this time" option and click Next.



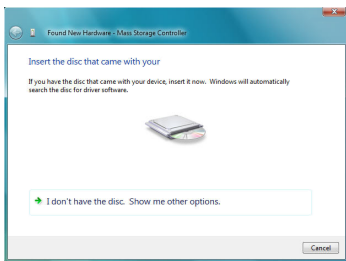
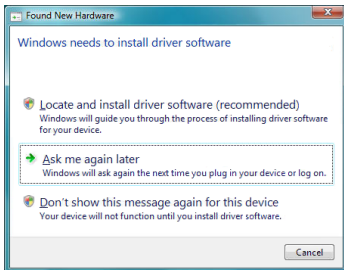
*all screenshots are for reference only

3. Select the option "Install Drivers Automatically (Recommended)" and then click the "Next" button.
4. Windows should now start searching for the drivers and install them automatically. Once this has completed, click the "Finish" button.
5. If Windows is unable to locate drivers, press the "Back" button or restart the wizard and select the advanced option to have it search the "USB_to_IO\FTDI" location on the CD by clicking the "Browse" button and selecting that location.



Windows Vista/ 7/ 8 / Server 2008 R2

1. Connect the USB cable from the Serial Adapter to a USB port on the computer.
2. When the Found New Hardware window appears on the screen, click on the "Locate and install driver software (recommended)" option. If prompted to search online, select the "Don't search online" option.

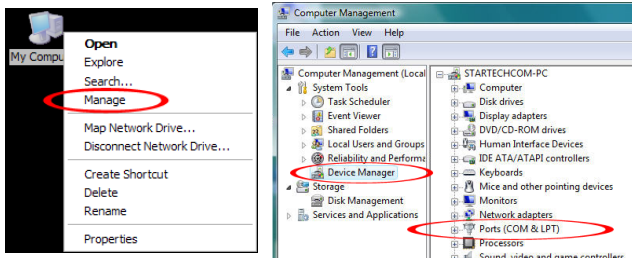


3. When prompted to insert the disc, insert the Driver CD that came with the card, into your CD/DVD drive and Windows will automatically proceed to search the CD.
4. If a Windows Security dialog window appears, click the "Install this driver software anyway" option to proceed.
5. Once the driver is installed, click the Close button.
6. If Windows is unable to locate drivers, press the "Back" button or restart the wizard and select the option to "Browse the computer" and have it search the "USB_to_IO\FTDI" location on the CD by clicking the "Browse" button.

Verifying Installation

Windows 2000/ XP/ Vista/ 7 / 8

From the main desktop, right-click on “My Computer” (“Computer” in Vista/ 7), then select “Manage”. In the Computer Management window, select “Device Manager” from the left window panel.

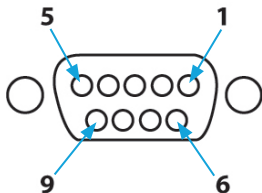


*all screenshots for reference only

Double-click on the “Ports (COM & LPT)” option. Additional COM port(s) should be visible. The port is automatically sequentially numbered by Windows, but can be changed through the “Properties” by right-clicking on the port.

Pinout

Pin	Signal
1	DCD
2	TxD
3	RxD
4	DTR
5	GND
6	DSR
7	RTS
8	CTS
9	RI



Specifications

Number of Ports	2	4	8
Host Interface	USB 2.0		
Chipset ID	FTDI FT2232H		
External Connectors	2 x 9-pin DB9 male 1 x USB type B female	4 x 9-pin DB9 male 1 x USB type B female	8 x -pin DB9 male 1 x USB type B female
LEDs	2 x Serial Tx Activity 2 x Serial Rx Activity 1 x Power	4 x Serial TX Activity 4 x Serial RX Activity 1 x Power	8 x Serial TX Activity 8 x Serial RX Activity 1 x Power
Serial Protocol	RS-232		
Maximum Data Transfer Rate	921.6 Kbps		
Data Bits	7, 8		
Parity	Odd, Even, Mark, Space, None		
Stop Bits	1, 2		
Buffer Size	4096 byte Transmit and Receive		
Enclosure Material	Metal		
Mounting Options	Wall/Surface, DIN Rail		
Operating Temperature	0°C ~ 55°C (32°F ~ 131°F)		
Storage Temperature	-20°C ~ 85°C (-4°F ~ 185°F)		
Humidity	5% ~ 95% RH		
Dimensions	104.0 x 56.0 x 25.0mm	150.0 x 66.5 x 26mm	173.5 x 97.2 x 43.2mm
Weight	400g	450g	950g
Compatible Operating Systems	Windows 2000/ XP/ Server 2003/ Vista/ Server 2008 R2/ 7 / 8 (32/64bit), Windows CE 4.2/ 5.0/ 6.0, Mac OS X, Linux kernel 2.4.x/ 2.6.x		

Technical Support

StarTech.com's lifetime technical support is an integral part of our commitment to provide industry-leading solutions. If you ever need help with your product, visit www.startech.com/support and access our comprehensive selection of online tools, documentation, and downloads.

For the latest drivers/software, please visit www.startech.com/downloads

Warranty Information

This product is backed by a two year warranty.

In addition, StarTech.com warrants its products against defects in materials and workmanship for the periods noted, following the initial date of purchase. During this period, the products may be returned for repair, or replacement with equivalent products at our discretion. The warranty covers parts and labor costs only. StarTech.com does not warrant its products from defects or damages arising from misuse, abuse, alteration, or normal wear and tear.

Limitation of Liability

In no event shall the liability of StarTech.com Ltd. and StarTech.com USA LLP (or their officers, directors, employees or agents) for any damages (whether direct or indirect, special, punitive, incidental, consequential, or otherwise), loss of profits, loss of business, or any pecuniary loss, arising out of or related to the use of the product exceed the actual price paid for the product. Some states do not allow the exclusion or limitation of incidental or consequential damages. If such laws apply, the limitations or exclusions contained in this statement may not apply to you.

Hard-to-find made easy. At StarTech.com, that isn't a slogan. It's a promise.

StarTech.com is your one-stop source for every connectivity part you need. From the latest technology to legacy products — and all the parts that bridge the old and new — we can help you find the parts that connect your solutions.

We make it easy to locate the parts, and we quickly deliver them wherever they need to go. Just talk to one of our tech advisors or visit our website. You'll be connected to the products you need in no time.

Visit www.startech.com for complete information on all StarTech.com products and to access exclusive resources and time-saving tools.

StarTech.com is an ISO 9001 Registered manufacturer of connectivity and technology parts. StarTech.com was founded in 1985 and has operations in the United States, Canada, the United Kingdom and Taiwan servicing a worldwide market.