



The product images are for illustration purposes only. Actual product appearance, ports, keyboard layout, and accessories may vary by model.

- Intel Core 3 N355 (8C / 8T, Max Turbo up to 3.9GHz, 6MB Intel Smart Cache)
- 8GB Soldered LPDDR5-4800
- 128GB UFS 2.2
- Integrated Intel Graphics
- ChromeOS High Royalty
- Case color - Luna Grey
- 1-year, Courier or Carry-in

Premium Care - Advanced Support from Real People. Real Fast.



REAL PERSON

Choose how you want to reach us - through the phone, chat or email - our expert technicians will take care of you.



REAL FAST

Highly trained technicians will provide you real-time solutions, whatever the issue, on your first contact. If needed, our team will schedule an onsite visit for the next business day.



HASSLE FREE

'Getting started' and 'how-to' assistance for hardware and software. Easy solutions that are simple to reach - that's how Premium Care delivers you the ideal support experience.



PC HEALTH CHECK

Free annual PC Health Check that allows our experts to spot issues before you do so they can resolve them quickly and help you avoid PC problems.

Accidental Damage Protection - Protection of your PC from the unexpected.

Experience shows that a significant portion of devices may be damaged (and not covered under warranty) in the first three years. Lenovo's Accidental Damage Protection service covers accidents beyond the system warranty such as drops, spills, bumps and even electrical surges. Make sure your new device has maximum protection, avoid unplanned costs and get peace of mind.

Base Warranty - Included with the systems you purchase, default 1- or 3-year coverage window.

Warranty Extensions & Upgrades - Service and protection that's right for your circumstances.

- Pick Up & Return Courier
- Onsite Support
- Technician Installed Customer
- Replaceable Unit Service
- International Warranty Upgrade

Recommended Accessories United Kingdom



Lenovo 65W Mini USB-C GaN Charger

GOA665WBUK



ThinkPad Bluetooth Presenter Mouse (Aura Edition)

4Y51T62792



Lenovo USB 20Gbps USB-C to USB-C Cable 1.5m

4X91U92143



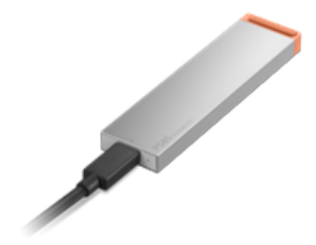
Lenovo Analog In-Ear Headphones Gen II Bulk Package (20pcs)

4XD1T54899



Lenovo Legion 17" Gaming Backpack GB800 (Light Gray)

GX41U39300



Lenovo PS8S Portable SSD 4TB

4XB1T91892

>> [View More Accessories](#)

PERFORMANCE**Processor**

Intel Core™ 3 N355 (8C / 8T, Max Turbo up to 3.9GHz, 6MB Intel® Smart Cache)

Graphics

Integrated Intel® Graphics

Chipset

Intel® SoC Platform

Memory

8GB Soldered LPDDR5-4800

Memory Slots

Memory soldered to systemboard, no slots, single-channel

Max Memory

8GB soldered memory, not upgradable

Storage

128GB UFS 2.2

Storage Slot

UFS on systemboard, no slots

Max Storage Support^[1]

128GB UFS 2.2 on systemboard

Card Reader

microSD Card Reader

Audio Chip

High Definition (HD) Audio, ALC5682I-VS-CGT codec

Speakers

Stereo speakers, 2W x2, optimized with Waves MaxxAudio®

Microphone

2x, Array

Camera

5.0MP with Privacy Shutter

Battery

50Wh

Power Adapter

No Power Adapter

DESIGN**Display**

14" WUXGA (1920x1200) IPS 300nits Glossy / Anti-fingerprint, 45% NTSC, 60Hz, TÜV Low Blue Light, Corning® Gorilla® Glass, Touch^[2]

Touchscreen

OGM, 10-point Multi-touch

Screen-to-Body Ratio

89% AAR (active area ratio)

Color Calibration

No Color Calibration

Pen

Pen Upgradable (Purchase Separately)

Keyboard

Backlit, English (UK)

Touchpad

Buttonless glass-like Mylar® surface multi-touch touchpad, 75 x 120 mm (2.95 x 4.72 inches)

Dimensions (WxDxH)^[3]

313 x 227 x 17.5 mm (12.32 x 8.94 x 0.69 inches)

Weight^[4]

Starting at 1.5 kg (3.31 lbs)

Case Color

Luna Grey

Case Material

Aluminium (Top), PC-ABS (Bottom)

Surface Treatment

Anodized Stamping (Top), Texture (Bottom)

SOFTWARE**Operating System**

ChromeOS High Royalty

Bundled Software

None

CONNECTIVITY**WLAN + Bluetooth**

Wi-Fi® 6E, 802.11ax 2x2 + BT5.3

WWAN

WWAN Not Supported

Ethernet

No onboard Ethernet

Standard Ports

- 2x USB-A (USB 5Gbps)
- 2x USB-C® (USB 10Gbps), with USB PD 45-65W and DisplayPort™ 1.4
- 1x HDMI® 1.4b
- 1x Headphone / microphone combo jack (3.5mm)
- 1x microSD card reader

Docking

None

SECURITY & PRIVACY**Security Chip**

Google Security Chip H1

Physical Locks

Kensington Nano Security Slot™, 2.5 x 6 mm

Fingerprint Reader

Touch Style, Match-on-Chip, on Palm Rest

Other Security

Camera privacy shutter

SERVICE**Base Warranty**

1-year, Courier or Carry-in

Included Upgrade

None

ACCESSORIES**Bundled Accessories**

None

CERTIFICATIONS**Green Certifications**

- ENERGY STAR® 9.0
- EPEAT™ Gold Registered^[5]
- ErP Lot 6/26
- RoHS compliant

Mil-Spec Test

MIL-STD-810H military test passed

Other Certifications

TÜV Rheinland® Low Blue Light (Software Solution)

MODEL

Product : Lenovo® Chromebook Plus 2-in-1 (14", 10)
TopSeller : No **EAN / UPC / JAN**: 199276557360
Announce Date: 2026-04-01 **End of Support** : 2031-08-16

Note:

[1] The storage capacity supported is based on the test results with current Lenovo storage offerings.

[2] IPS (in-plane switching) technology may refer to IPS, PLS, ADS, AHVA, AAS.

[3] The system dimensions may vary depending on configurations.

[4] The system weight is approximate and based on results in Lenovo lab, which varies depending on the source of component, variance of the distribution of each component, and manufacturing process. It may not be the exact weight for each specific model.

[5] EPEAT is registered where applicable, please visit [epeat.net](https://www.epeat.net) for registration status by country.

- Please refer to the official [Lenovo store website](https://www.lenovo.com) or contact a local Lenovo sales representative or authorized business partner for current inventory and purchase options.
- Lenovo reserves the right to change specifications without notice.