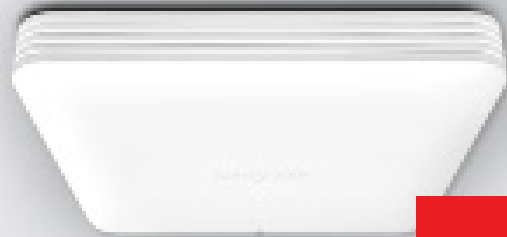


VigorAP 1070C

Wi-Fi 7 BE19000 Enterprise Ceiling/
Wall Mesh Wireless Access Point



Datasheet

Product Overview

The VigorAP 1070C is a high-performance wireless access point designed for business where speed matters. This ceiling or wall-mounted mesh access point delivers tri-band wireless performance of up to 19Gbps (BE 19000), providing fast and reliable Wi-Fi 7 connectivity for a demanding network.

Equipped with 10GbE and 2.5GbE Ethernet wired interfaces, the VigorAP 1070C ensures seamless integration with your existing network infrastructure. This allows for high-speed data transfer and optimal performance for all your connected devices.

Ideal for small to medium-sized businesses and home offices, the VigorAP 1070C is easy to install and manage, making it a cost-effective solution for improving your wireless network. With its advanced features and high-speed performance, this access point provides a secure and reliable Wi-Fi connection for your business needs.

Key Features & Benefits

Powerful Wi-Fi 7 Access Point

The DrayTek wireless AP offers BE19000 Wi-Fi 7 technology, ideal for businesses requiring high-performance networks for demanding applications like video conferencing, gaming, and large file transfers.

Benefits: High performance and increased productivity.

Zero-wait DFS

The additional DFS-dedicated 5 GHz antenna helps with continuous radar scanning, significantly reducing the time the wireless network is placed on hold while fully complying with regulatory DFS requirements.

Benefits: Minimises service interruptions while remaining fully compliant.

Multi-Link Operation (MLO)

Multi-Link Operation allows compatible Wi-Fi 7 devices to transmit and receive data across multiple bands simultaneously, improving throughput and link reliability.

Benefits: Faster speeds and more stable connections.

10GbE and 2.5GbE Interfaces with PoE

Supports PoE via its 10GbE interface and features an additional 2.5GbE port to minimise wired bottlenecks for Wi-Fi 7 BE19000 performance.

Benefits: Simplified installation, reduced cable clutter, and maximised wireless performance.

High Density Performance

Easily accommodate high-density environments by linking up to 512 clients with our 802.11be tri-band antennas and Wi-Fi 7 4x4 MIMO technology.

Benefits: Improved network efficiency in dense environments.

Master AP Management

With VigorAP 1070C, you can effortlessly manage up to eight compatible mesh* VigorAPs and as many as 20 access points through the easy-to-use Wireless Virtual Controller module. Enjoy the convenience of auto-provisioning and AP monitoring, both readily available upon initial use.

Benefits: Zero Touch Deployment.

Key Specification

- Wi-Fi 7 Mesh Wireless Access Point
- BE19000– 802.11be Tri Band Wireless
- MLO – Multi-Link Operation for higher speeds and lower latency
- WPA3 Security – Stronger Security with WPA3 Personal & Enterprise
- Power through PoE or DC Power Adapter (not included)
- Multi-SSID over Mesh – Separate Internal and Guest Networks over Mesh*
- 10Gb and 2.5Gb Ethernet Interfaces
- Centrally Managed or Standalone Operation
- Root AP for AP Management

VigorAP 1070C Models

UK Product Code	EAN	Product Name	Product Description
VAP1070C-K	4710484749185	VigorAP 1070C (UK/IE)	VigorAP 1070C Wi-Fi 7 BE19000 Ceiling AP with 10GbE PoE Ethernet

Technical Specification (UK Hardware Spec.)

Physical Interfaces

- 1x 10 Gigabit Ethernet LAN Port (10G/2.5G/1G/100M/10M), RJ45 (accepts PoE++ Power)
- 1x 2.5 Gigabit Ethernet LAN Port (2.5G/1G/100M/10M), RJ45
- 1x USB 2.0
- Factory Reset Button (recessed)
- DC Power Socket
- Security Lock

WAN Performance

- BE19000Class Wireless Access Point
- Max Concurrent Clients: 512
- Max Wireless Networks (SSIDs): 24 total, 8 per band
- 6GHz: Up to 11530Mb/s PHY Rate
- 5GHz: Up to 5765Mb/s PHY Rate
- 2.4GHz: Up to 1376Mb/s PHY Rate

Wireless Antennas

- 4x Internal Dual-Band (2.4GHz and 5GHz) Antennas (4 dBi)
- 4x Internal 6GHz Antennas (6.5 dBi)
- 1x Internal 5GHz Antenna for Zero-Wait DFS

Wireless LAN Compatibility

- 2.4GHz Standards: IEEE 802.11be / ax / b / g / n, 4x4 MIMO, up to 4096-QAM
- 5GHz Standards: IEEE 802.11be / ax / ac Wave 2 / a / n, 4x4 MIMO, up to 4096-QAM
- 6GHz Standards: IEEE 802.11be / ax, 4x4 MIMO, up to 4096-QAM

Wireless LAN Features

- Wi-Fi 7
- Tri-Band 802.11be - 2.4GHz, 5Ghz & 6GHz
- Backwards compatible with 802.11ax, 802.11ac, 802.11b, 802.11g, 802.11n
- 2.4GHz Channel Bandwidth: 20 / 40 MHz
- 5GHz Channel Bandwidth: 20 / 40 / 80 / 160 MHz
- 6GHz Channel Bandwidth: 20 / 40 / 80 / 160 / 320 MHz
- 2.4GHz Channels: 1 to 13
- 5GHz Channels: Extended 5Ghz Band - Channels 36-48, 52-64, 100-140
- 6GHz Channel within 5945–6425 MHz
- DFS/TPC Support for 5GHz channels 52 to 140
- OFDMA – Higher Efficiency
- TX Beamforming
- 4096-QAM
- Multi-User MIMO

Security Features

- Wireless Encryption:
 - WPA2: Personal, Enterprise (802.1x)
 - WPA3: Personal, Enterprise, OWE
 - WPA/WEP for legacy applications
- 802.1x Authentication (RADIUS)
- Wireless Client Isolation
- Hidden SSIDs (Selectable)
- WPS - Wi-Fi Protected Setup
- MAC Address Filtering (ACL)

Access Point Modes

- Access Point
- Mesh Root*
- Mesh Node*
- Range Extender

Wireless Control Features

- Wireless Client Status List in WUI
- Up to eight distinct SSIDs (for VLANs) for each frequency band (2.4/5/6GHz)
- 802.1Q VLAN (tag-based)
- Built-in DHCP Server & DHCP Relay

Wireless Performance Optimisation

- Airtime Fairness
- Band Steering
- WMM (Wireless MultiMedia)
- Fast Roaming 802.11r

Mesh Features*

- Up to 8 APs per Mesh Group
- Up to 3 Mesh Hops per chain with optional Wired Uplinks
- Config Sync
- Self-Healing
- Mesh Syslog

Diagnostic Features

- Dashboard: Traffic Graph & Client Usage
- System Log
- Wireless LAN Statistics
- Interference Monitor (Site Survey)

Management

- Web Interface (HTTP/HTTPS)
- DHCP Client
- TR-069 Control (For VigorACS or another TR-069 platform)
- CLI (Command Line Interface) – Telnet, SSH
- Firmware upgrade by TR-069/HTTP
- Central AP Management (from compatible DrayTek router/AP/ controller)
- Central AP Management – manage up to 50 VigorAPs
- SNMP v1, v2c, v3
- Management VLAN
- Configuration File Export & Import
- Schedule: Wi-Fi Up/Down & Auto Reboot

Power Requirements

- Maximum Power Consumption: 33 Watts
- DC 12V 3A via external 100-240v AC/DC PSU (not supplied)
- 802.3bt PoE++ via LAN port. Requires PoE++ injector or a PoE++ switch such as the VigorSwitch PX2060

Environmental & Physical

- Operating Temperature: 0 ° C to 40 ° C
- Operating Humidity: 10% to 90% (non-condensing)
- Physical Dimensions: 225mm (width) x 225mm (height) x 43mm (depth)
- Weight: 1674g
- Fitting: Ceiling or Wall Mountable

Pack Contents

- VigorAP 1070C wireless access point
- Ceiling Mount Bracket & Fittings Kit
- Quick Start Guide
- Ethernet Cable (RJ-45)

ROHS, UKCA & CE Compliant Warranty

- Two (2) Years RTB
- Software security updates:
- 3 years after the EOL notification. Please note that this only applies to products sold in the UK
- Optional VigorCare Enhanced Warranty Available
 - VigorCare A3 3 Year Subscription: VCARE-A3
 - VigorCare A5 5 Year Subscription: VCARE-A5

* - visit <https://www.draytek.co.uk/information/our-technology/mesh-wireless-compatibility-list> for mesh compatibility details