


**Dell Mouse**

**WM118**

User's Guide

## Notes, Cautions, and Warnings

 **NOTE:** A NOTE indicates important information that helps you make better use of your computer.

 **CAUTION:** A CAUTION indicates potential damage to hardware or loss of data if instructions are not followed.

 **WARNING:** A WARNING indicates a potential for property damage, personal injury, or death.



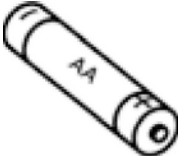

# Contents

<b>About your mouse</b> .....	<b>4</b>
<b>Package contents</b> .....	<b>4</b>
<b>Features</b> .....	<b>5</b>
<b>Setting up your wireless mouse</b> .....	<b>6</b>
<b>Connecting your wireless mouse</b> .....	<b>8</b>
<b>Specifications.</b> .....	<b>10</b>
<b>Troubleshooting</b> .....	<b>11</b>
<b>Statutory information.</b> .....	<b>12</b>
<b>Warranty</b> .....	<b>12</b>
Limited warranty and return policies .....	12
For U.S. customers: .....	12
For European, Middle Eastern and African customers: .....	12
For non-U.S. customers: .....	12
<b>Revision history</b> .....	<b>13</b>

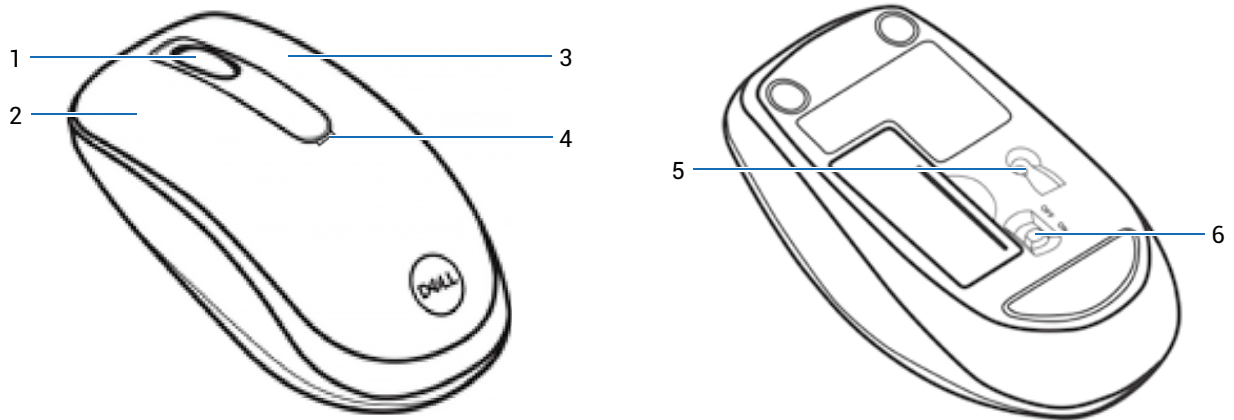
# About your mouse

## Package contents

Table 1. Package components and descriptions

Component image	Component description
	Mouse
	USB receiver
	AA-type battery
	Documents

# Features

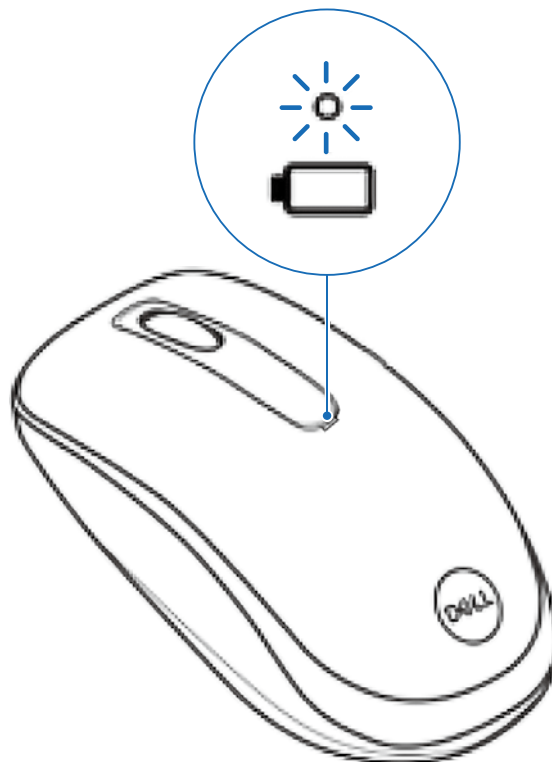


**Figure 1. Mouse top and bottom views**

**Table 2. Mouse features**

Callout	Description
1	Scroll wheel
2	Left button
3	Right button
4	Low Battery LED Indicator
5	Optical sensor
6	Power switch

- ① **NOTE:** Mouse enters the auto power save mode if not used.
- ① **NOTE:** Low Battery LED Indicator blinks in amber colour when battery capacity is low.
- ① **NOTE:** Turn off the power switch when the mouse is not used to improve battery life.



**Figure 2. Low Battery LED Indicator**

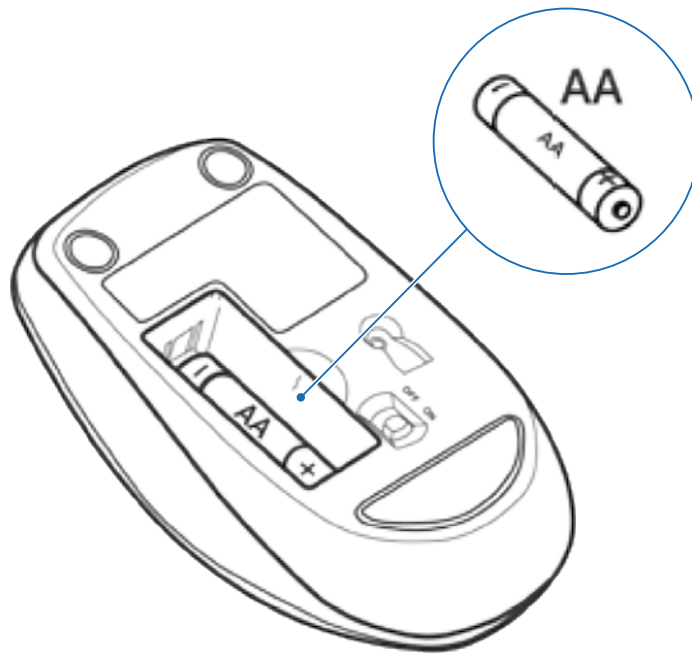
# Setting up your wireless mouse

1. Locate the base cover at the bottom of the mouse. Using your fingertip, pry open the base cover.



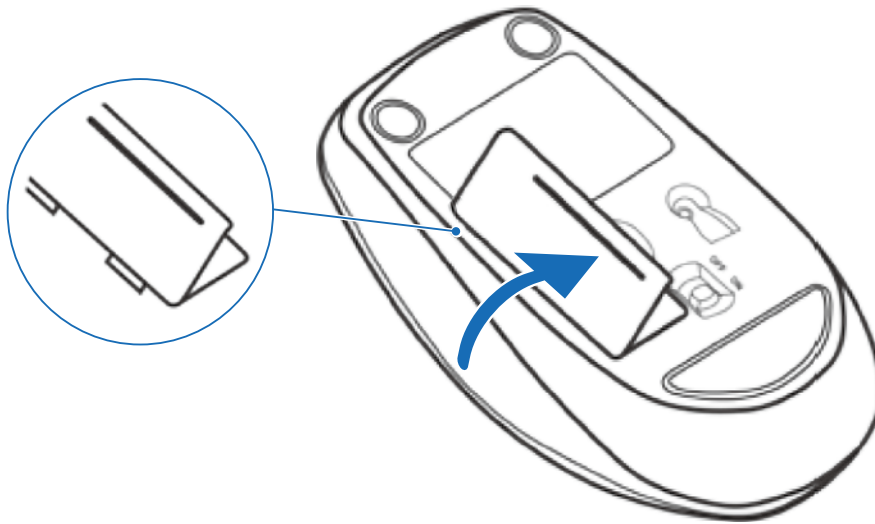
**Figure 3.** Removing the base cover

2. Install the AA battery into the battery compartment.



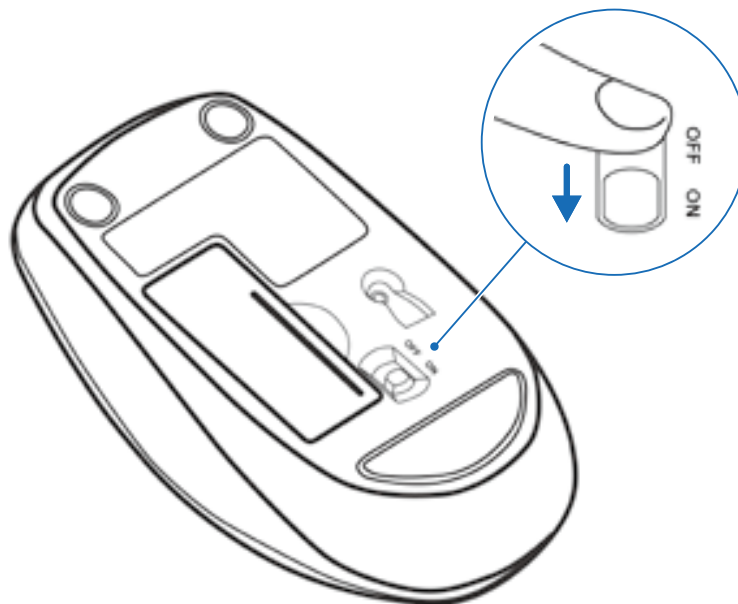
**Figure 4.** Installing the battery

3. Close the base cover.



**Figure 5.** Closing the base cover

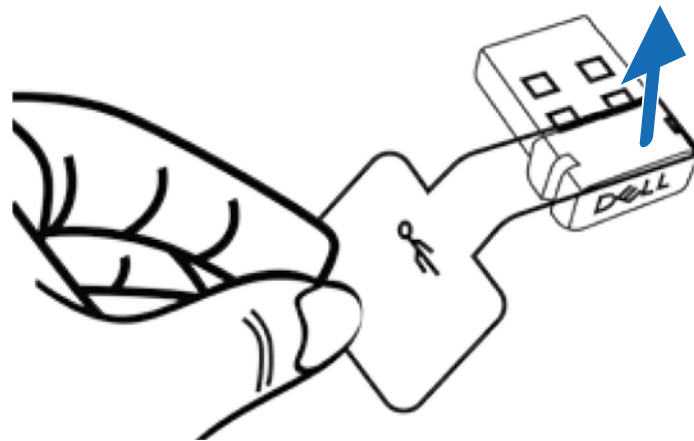
4. Slide the power switch down to turn on the mouse.



**Figure 6.** Turning on the mouse

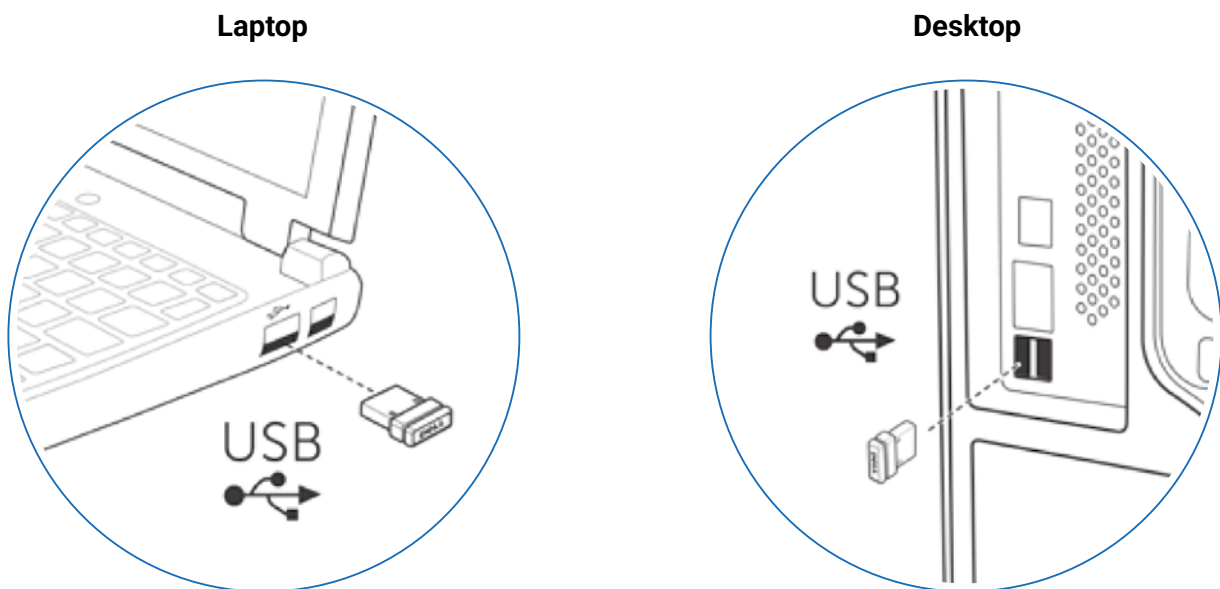
# Connecting your wireless mouse

1. Remove the receiver tag from the USB receiver.



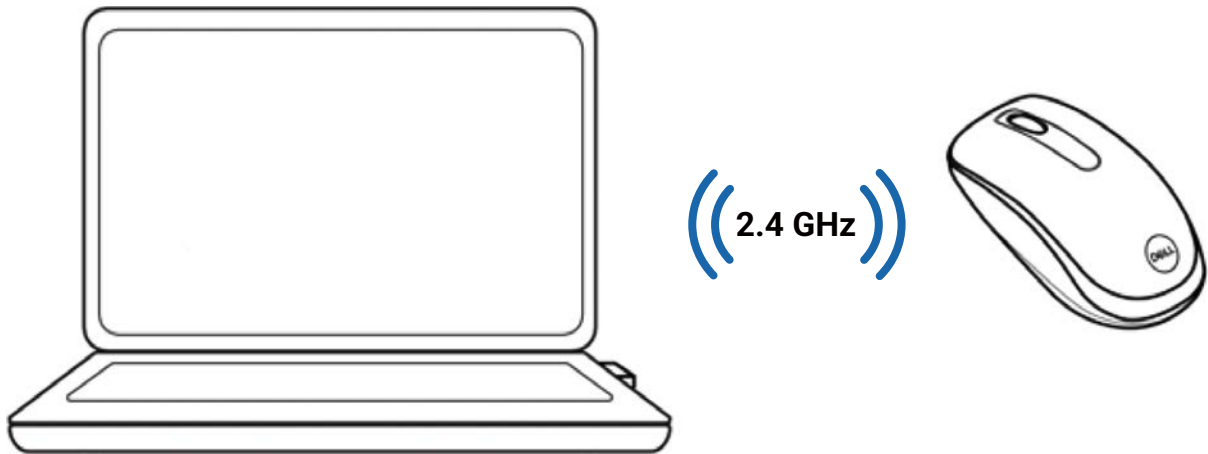
**Figure 7.** Detaching the receiver tag

2. Connect the USB receiver to the USB port on your computer.



**Figure 8.** Connecting the USB receiver

The mouse is now connected with your computer.



**Figure 9.** The mouse is now connected with your computer

① **NOTE:** If your computer does not support USB-A port, a USB-C to USB-A adapter (sold separately) is required.

# Specifications

**Table 3. Specifications**

Specifications	Value
Model number	WM118
Connection type	Wireless (2.4 GHz with nano receiver)
System requirement	<ul style="list-style-type: none"> <li>• Windows 10</li> <li>• Windows 11</li> <li>• macOS 11 or later</li> <li>• Linux</li> <li>• Ubuntu</li> <li>• ChromeOS</li> <li>• iPadOS 14 or later</li> <li>• Android 9.0 or later</li> </ul>
Operating voltage	0.90 V – 1.50 V
Battery type	One AA battery
Weight (without battery)	58 g (0.13 lb)
Dimensions:	
Length	105.00 mm (4.13 in.)
Width	58.30 mm (2.30 in.)
Height	38.90 mm (1.53 in.)
Temperature:	
Operating	–10°C to 50°C (14°F to 122°F)
Storage	–40°C to 65°C (–40°F to 149°F)
Storage humidity	95% maximum relative humidity; non-condensing
RF resolution	2.4 GHz RF
Operating channel	2405 MHz to 2474 MHz
Operation distance	Up to 10 meters

# Troubleshooting

**Table 4. Troubleshooting**

Problems	Possible solutions
Mouse is not functioning	<ol style="list-style-type: none"> <li>1. Check if the batteries are inserted in the correct orientation. The batteries "+" and "-" ends must be placed as indicated on the battery compartment.</li> <li>2. Check the battery level. <ul style="list-style-type: none"> <li>• If the device uses a rechargeable battery, ensure that the battery is fully charged.</li> <li>• If the battery is exhausted, replace it with a new one.</li> </ul> </li> <li>3. Turn off the device, and then turn it on. Check if the battery-status light is flashing amber 10 times, indicating that the battery power is low. If the battery is fully depleted, the battery-status light does not turn on.</li> <li>4. Restart your computer.</li> <li>5. Ensure that the USB receiver is directly connected to your computer. <ul style="list-style-type: none"> <li>• Avoid using the port replicators, USB hubs, and so on.</li> <li>• Insert the USB receiver to another USB port closer to the mouse.</li> </ul> </li> <li>6. Ensure that the distance between your computer and mouse is within one meters, and avoid placing metal objects, thick items, or your PC between the USB receiver and the devices to maintain a stable signal.</li> </ol>
Unable to connect the mouse with your computer	<ol style="list-style-type: none"> <li>1. Check the battery level. <ul style="list-style-type: none"> <li>• If the device uses a rechargeable battery, ensure that the battery is fully charged.</li> <li>• If the battery is exhausted, replace it with a new one.</li> </ul> </li> <li>2. Turn off the device, and then turn it on. Check if the battery-status light is flashing amber 10 times, indicating that the battery power is low. If the battery is fully depleted, the battery-status light does not turn on.</li> <li>3. Restart your computer.</li> <li>4. Ensure that the USB receiver is directly connected to your computer. Avoid using the port replicators, USB hubs, and so on.</li> <li>5. Change the USB port or insert the USB receiver into another USB port on your computer.</li> <li>6. Ensure that the distance between your computer and mouse is within one meter, and avoid placing metal objects, thick items, or your PC between the USB receiver and the devices to maintain a stable signal.</li> </ol>
Mouse pointer does not move	<ol style="list-style-type: none"> <li>1. Check the battery level. <ul style="list-style-type: none"> <li>• If the device uses a rechargeable battery, ensure that the battery is fully charged.</li> <li>• If the battery is exhausted, replace it with a new one.</li> </ul> </li> </ol>
Mouse left or right button does not work	<ul style="list-style-type: none"> <li>• If the battery is exhausted, replace it with a new one.</li> </ul>
Wireless connection is lost	<ol style="list-style-type: none"> <li>2. Turn off the device, and then turn it on. Check if the battery-status light is flashing amber 10 times, indicating that the battery power is low. If the battery is fully depleted, the battery-status light does not turn on.</li> </ol>
Mouse cursor is lagging or erratic	<ol style="list-style-type: none"> <li>3. Restart your computer.</li> <li>4. Ensure that the distance between your computer and mouse is within one meter.</li> </ol>
Troubleshooting a slow moving cursor	<ol style="list-style-type: none"> <li>1. Ensure that the sensor is not obstructed or dirty.</li> <li>2. Glass or very smooth glossy surfaces are not suitable for the mouse sensor to capture the mouse movement. Using a dark-colored fabric mouse pad can improve the tracking.</li> <li>3. Change the mouse settings to adjust the pointer speed. Click or tap the tab that matches the Operating System (OS) installed on your laptop or desktop and perform the steps within that section to change the settings. <ul style="list-style-type: none"> <li>• In the <b>Search</b> box, type <code>main.cpl</code>. The <b>Mouse Properties</b> dialog box appears.</li> <li>• Click <code>main.cpl</code> in the list of programs.</li> <li>• Click the <b>Pointer Options</b> tab. In the <b>Motion</b> section, move the slider to adjust the pointer speed to the desired level.</li> <li>• Click <b>OK</b>.</li> </ul> </li> </ol>

# Statutory information

## Warranty

### Limited warranty and return policies

Dell Mouse WM118 carries a three-year limited hardware warranty if purchased together with a Dell computer, it follows the computer warranty.

#### For U.S. customers:

This purchase and your use of Dell Mouse WM118 is subject to Dell's end user agreement, which you can find at [Dell.com/terms](https://www.dell.com/terms). This document contains a binding arbitration clause.

#### For European, Middle Eastern and African customers:

Dell Mouse WM118 that is sold and used is subject to applicable national consumer legal rights, the terms of any retailer sale agreement that you have entered into (which will apply between you and the retailer) and Dell's end user contract terms.

Dell may also provide an additional hardware warranty – full details of the Dell end user contract and warranty terms can be found by going to [Dell.com/terms](https://www.dell.com/terms), selecting your country from the list at the bottom of the "home" page and then clicking the "terms and conditions" link for the end user terms or the "support" link for the warranty terms.

#### For non-U.S. customers:

Dell Mouse WM118 that is sold and used is subject to applicable national consumer legal rights, the terms of any retailer sale agreement that you have entered into (which will apply between you and the retailer) and Dell's warranty terms. Dell may also provide an additional hardware warranty – full details of Dell's warranty terms can be found by going to [Dell.com](https://www.dell.com), selecting your country from the list at the bottom of the "home" page and then clicking the "terms and conditions" link or the "support" link for the warranty terms.

# Revision history

The following table provides the revision history of this document:

**Table 5. Revision history**

<b>Revision</b>	<b>Date</b>	<b>Description</b>
A00	May 2026	Original publish date.