

Dell Pro 7 Rechargeable Compact Mouse

MS746

User's Guide

Notes, cautions, and warnings

① **NOTE:** A NOTE indicates important information that helps you make better use of your product.

⚠ **CAUTION:** A CAUTION indicates either potential damage to hardware or loss of data and tells you how to avoid the problem.

⚠ **WARNING:** A WARNING indicates a potential for property damage, personal injury, or death.

Contents

About your mouse	4
Package contents	4
Information available on the packaging	5
Features	6
Mouse.....	6
Dell Display and Peripheral Manager	7
Installing Dell Display and Peripheral Manager	7
Setting up your wireless mouse	8
Pairing with a USB receiver	10
Pairing your wireless mouse using Swift Pair	11
Pairing your wireless mouse using Bluetooth	12
Pairing device two using Bluetooth	13
Switching between paired devices	14
Smart Connect.....	14
Mouse specifications	15
General	15
Electrical	15
Physical characteristics	15
Environmental	15
Wireless	16
Troubleshooting	17
Statutory information	20
Warranty	20
Limited warranty and return policies.....	20
For U.S. customers	20
For European, Middle Eastern and African customers.....	20
For non-U.S. customers.....	20
Revision history	21

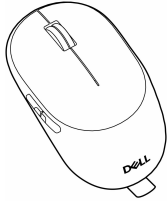


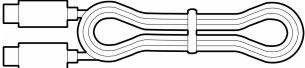
About your mouse

Package contents

The following table provides the list of components that are shipped with your mouse. If any component is missing, contact Dell. For more information, see [Contacting Dell](#).

NOTE: Some items may be optional and may not ship with your mouse. Some features may not be available in certain countries.

Table 1. Components and descriptions

Component image	Component description
	Dell MS746 Mouse
	Dell Secure Link USB receiver NOTE: The Dell Secure Link USB receiver is placed in the mouse USB storage compartment. NOTE: The Dell Secure Link USB receiver is referred to as USB receiver in the rest of the document.
	Document NOTE: Scan the QR code to access the information about setting up, features, specifications, and troubleshooting.
	USB-C to USB-C cable (For battery charging only)

Information available on the packaging

The product is compatible with the following operating systems:

- Windows
- macOS
- iOS
- Red Hat
- Ubuntu
- ChromeOS

The following are the accessories that ship within the box:

- Dell Secure Link USB receiver (inside the mouse)
- USB-C to USB-C cable

For information about recycling, see the [Dell recycling](#) website

Features

Mouse

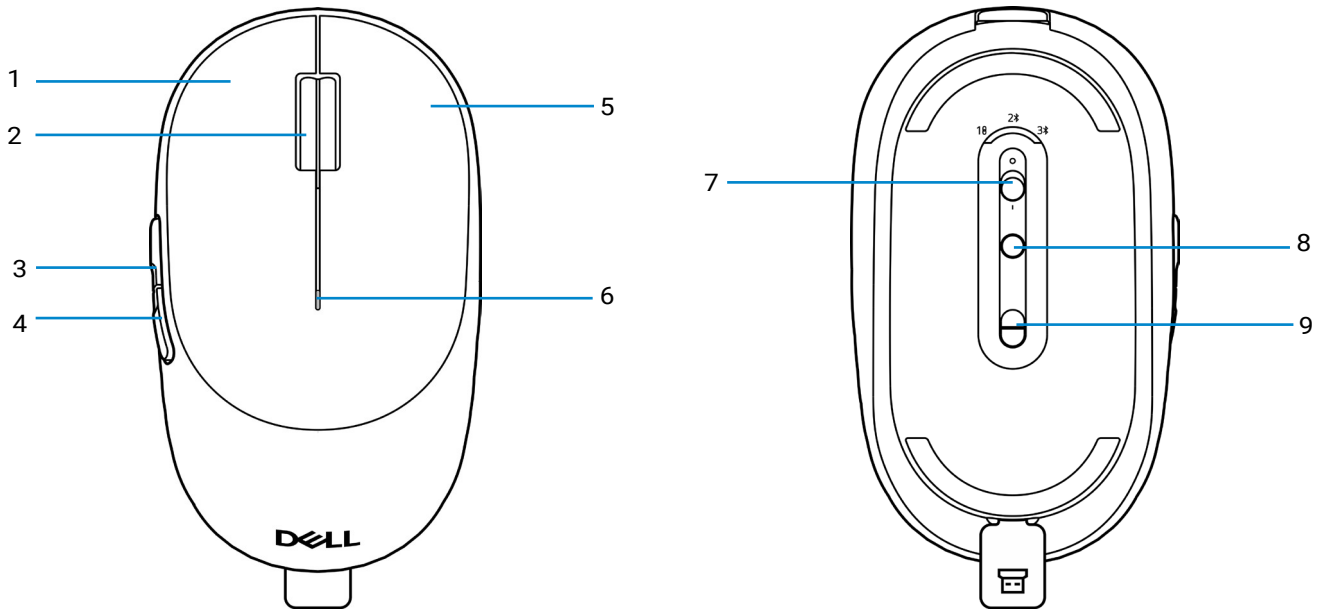


Figure 1. Top and Bottom views

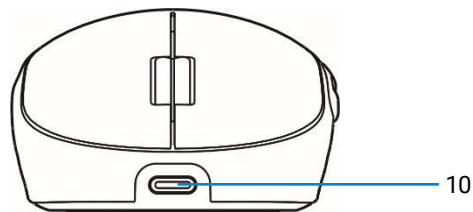


Figure 2. Front view

Table 2. Mouse components

Callout	Description	Callout	Description
1	Left button	2	Scroll wheel
3	Page up button	4	Page down button
5	Right button	6	Battery-status light (Supercapacitor)
7	Power switch	8	Connection-mode button
9	Optical sensor	10	USB charging port

NOTE: Open the mouse cover to access the PPID/Regulatory label location. Remove the USB receiver before use.



Figure 3. Regulatory and PPID label location on the mouse

Dell Display and Peripheral Manager

Dell Display and Peripheral Manager is an app that helps you set up and configure your Dell monitors and peripherals. With this app you can:

- Assign program shortcuts to device programmable buttons through **Button Customization** tab. You can even set shortcuts specific to an app with App settings.
- View the device information such as firmware version and battery status for wireless devices.
- Upgrade to the latest firmware for your device.
- Configure the DPI setting and set the primary mouse button.
- Pair or unpair to the USB receiver.

Installing Dell Display and Peripheral Manager

When you connect the device to your computer for the first time, you may be prompted to download and install the app.

① **NOTE:** If the download prompt does not appear within a few minute, you can manually install the software from Dell.com/support/DDPM.

For more information, expand **Support Resources** and click **Manuals & Documents** to access the *Dell Display and Peripheral Manager User's Guide*.

Setting up your wireless mouse

1. Charge the battery in your wireless mouse.
 2. Connect one end of the USB-C charging cable to the USB-C port on the mouse and the other end to an available USB-C port on your computer, desktop, or compatible mobile device.
- ① **NOTE:** European Union (EU) has a common charger requirement for wireless products that have an embedded rechargeable battery.
 - ① **NOTE:** Your wireless mouse has a rechargeable battery. For best results, ensure that the battery is fully charged before using your mouse for the first time.
 - ① **NOTE:** To improve the run time and for long-term performance, turn off the power switch when the wireless mouse is not in use.

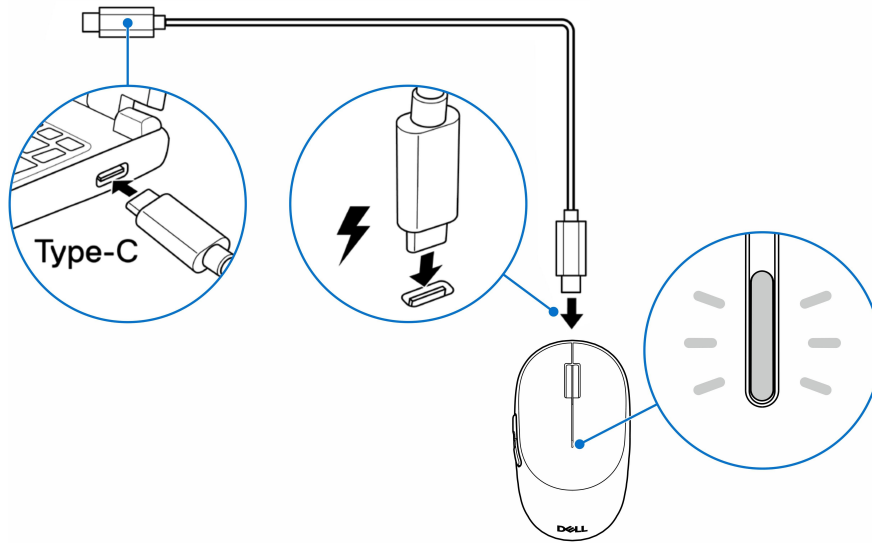


Figure 4. Charging the mouse

The white low battery-status light blinks until the battery is fully charged or the USB charging cable is unplugged.

- ① **NOTE:** During charging, the low battery-status light turns on even if the mouse is turned off.
- ① **NOTE:** The USB-C charging cable can be used only for charging the mouse.

Table 3. Mouse battery LED behavior

Charging level	LED behavior
Low power ($\leq 5\%$)	White blinking for 10 seconds, then off for 50 seconds, repeating this cycle.
Normal power ($> 5\%$)	White for three seconds when turned on, then turns off. Remains off during normal use.
Charging	Blinking in white.
Fully charged	Static white for 10 seconds, then turns off.

3. Locate the slot at the back of the mouse. Using your fingertip, pry open the base cover.

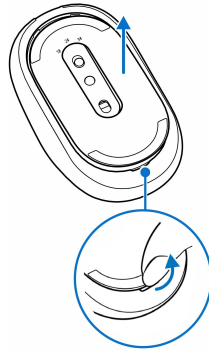


Figure 5. Opening the base cover

4. Remove the USB receiver from the USB storage compartment.

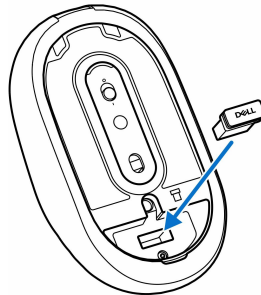


Figure 6. Removing the USB receiver

5. Replace the base cover.

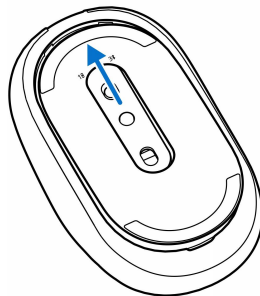


Figure 7. Replacing the base cover

6. Slide the power switch down to turn on the mouse.

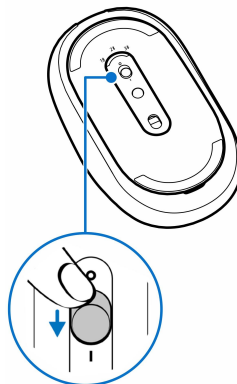


Figure 8. Turning on the mouse

Pairing with a USB receiver

Your Dell wireless mouse can be paired with devices using the USB receiver. You can pair and switch between a laptop, desktop, and a compatible mobile device.

- ⓘ **NOTE:** If your computer does not support USB-A port, a USB-C to USB-A adapter (sold separately) is required.
- ⓘ **NOTE:** The USB receiver is pre-paired in the factory with the mouse. If it is accidentally unpaired, you can pair your mouse again using the Dell Display and Peripheral Manager.

1. Connect the USB receiver to the USB port on your computer.

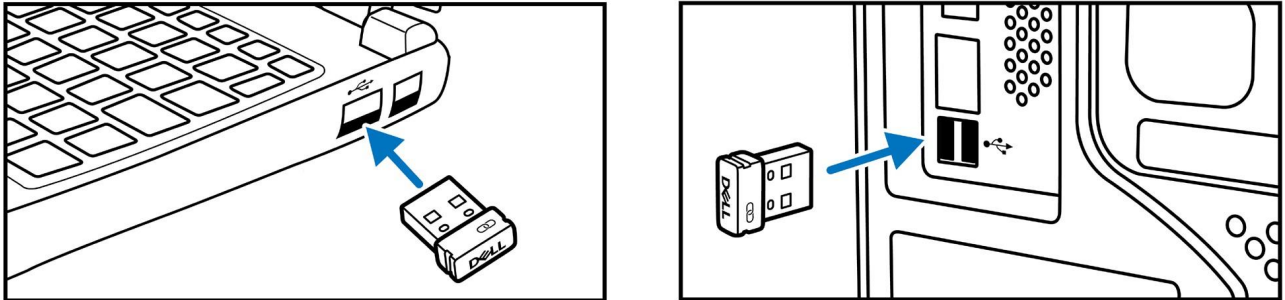


Figure 9. Connecting the USB receiver

2. Toggle the connection-mode button on your mouse until USB mode is selected (10). The LED indicator (10) turns on automatically for three seconds and then turns off.

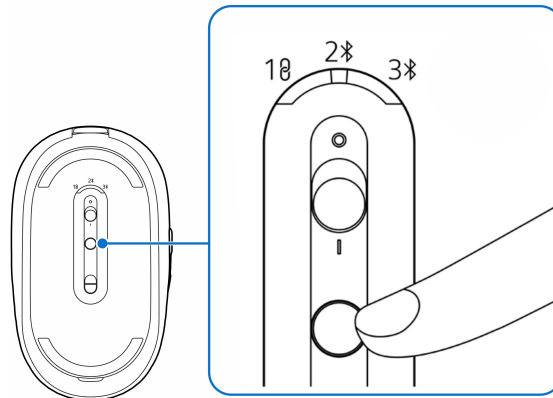


Figure 10. Selecting the USB mode

The mouse is now connected with your computer.

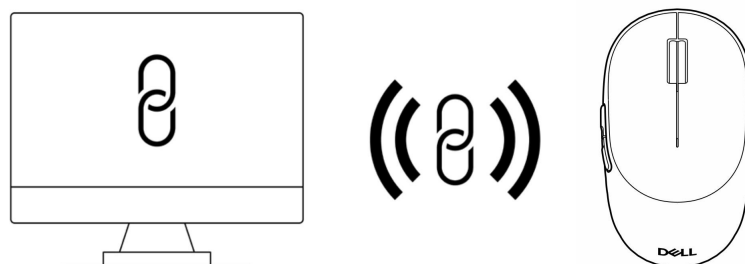


Figure 11. Mouse connected to the computer

Pairing your wireless mouse using Swift Pair

1. In Windows Search, type Bluetooth.
2. Click **Bluetooth and other devices settings**. The **Settings** window appears.
3. Ensure that the **Show notifications to connect using Swift Pair** check box is selected.

Show notifications to connect using Swift Pair

When selected, you can connect to supported Bluetooth devices quickly when they're close by and in pairing mode.

Figure 12. Show notifications

4. Ensure that the Bluetooth is turned on, in your computer.
5. Place your wireless mouse near your computer. Then, press the connection-mode button to switch to the first Bluetooth pairing mode (2*).
6. Press the connection-mode button for three seconds. Ensure that the Bluetooth channel LED (2*) blinks white, indicating Bluetooth pairing is initiated. The **New Bluetooth mouse found** window appears.
7. Click **Connect** to confirm the pairing process between the wireless mouse and your computer.

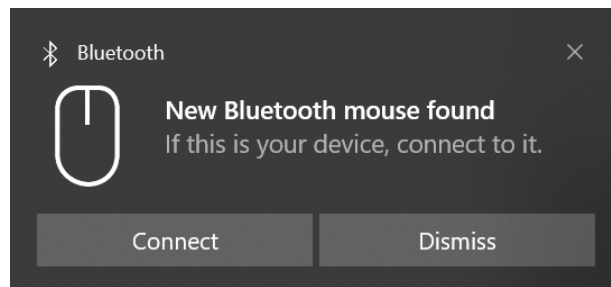


Figure 13. New Bluetooth mouse found

Pairing your wireless mouse using Bluetooth

Your Dell wireless mouse can be paired with your Bluetooth-enabled computer. You can pair and switch between laptop, desktop, and a compatible mobile device.

- ① **NOTE:** You can connect up to two devices with your wireless mouse using Bluetooth.
 - ① **NOTE:** Before pairing your wireless mouse using Bluetooth, ensure that you unpair the inactive devices on your computer. Update the Bluetooth Driver on your Dell computer to the latest version. For more information, see **Drivers & Downloads** at [Dell Support Site](#).
 - ① **NOTE:** Ensure that the distance between your computer and mouse is within the Bluetooth reception range.
1. Toggle the connection-mode button on the wireless mouse to switch to the first Bluetooth pairing mode labeled (2⌘).
 2. Press the connection-mode button for three seconds. Ensure that the Bluetooth channel LED (2⌘) blinks white, indicating that the Bluetooth pairing is initiated.

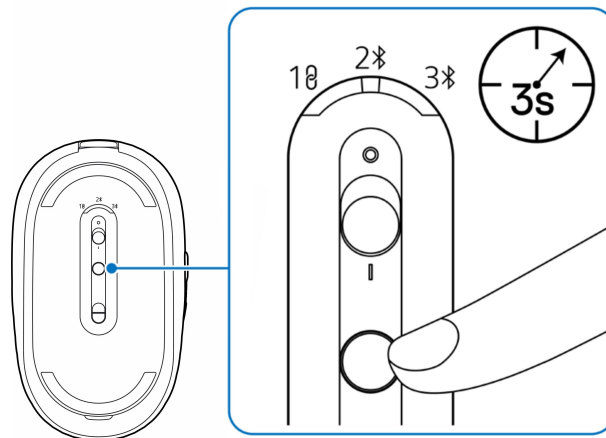


Figure 14. Initiating pairing with devices

3. Pair your wireless mouse with your Bluetooth-enabled computer.
 1. Select **Start > Settings > Bluetooth & devices > Add device**.
 2. Click **Dell MS746**, and then click **Done**.
 3. Confirm the pairing process on the wireless mouse and your computer.

The Bluetooth channel LED (2⌘) turns solid white for a few seconds to confirm the pairing, and then the light turns off. After your mouse and computer pairing is completed, the mouse connects to the computer automatically when the Bluetooth is enabled and both devices are within the Bluetooth range.

- ① **NOTE:** Ensure that the distance between your computer and mouse are within the Bluetooth reception range.

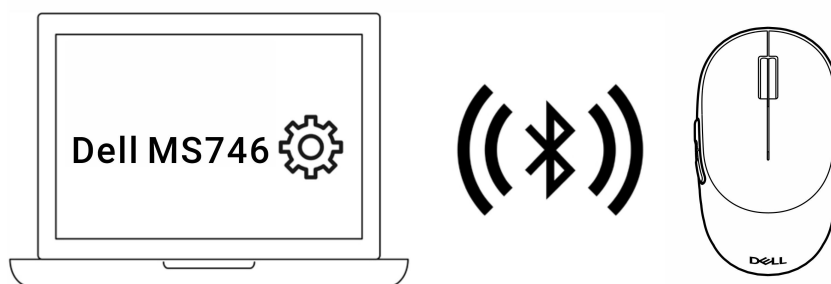


Figure 15. First Bluetooth-enabled device pairing

Pairing device two using Bluetooth

- ① **NOTE:** You can connect up to two devices with your wireless mouse using Bluetooth.
- ① **NOTE:** Before pairing your wireless mouse using Bluetooth, ensure that you unpair the inactive devices on your computer. Update the Bluetooth Driver on your Dell computer to the latest version. For more information, see **Drivers & Downloads** at [Dell Support Site](#).
- ① **NOTE:** Ensure that the distance between your computer and mouse is within the Bluetooth reception range.
- ① **NOTE:** For Bluetooth pairing, you can use Swift Pair or manual pair option.

1. In **Windows Search**, type **Bluetooth**.
2. Click **Bluetooth and other devices settings**. The **Settings** window appears.
3. Ensure that the **Show notifications to connect using Swift Pair** check box is selected.

Show notifications to connect using Swift Pair

When selected, you can connect to supported Bluetooth devices quickly when they're close by and in pairing mode.

Figure 16. Show notifications

4. Ensure that the Bluetooth is turned on.
5. Place your wireless mouse near your computer. Then press the connection-mode button to switch to the second Bluetooth pairing mode (3*).
6. Press the connection-mode button for three seconds. Ensure that the Bluetooth channel LED (3*) blinks white, indicating that the Bluetooth pairing is initiated. The **New Dell MS746 found** window appears.

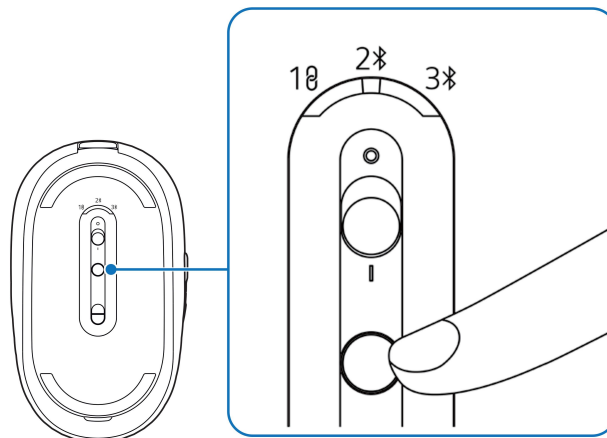


Figure 17. Initiating pairing with devices

7. Click **Connect** and confirm the pairing process on both the wireless mouse and your computer.

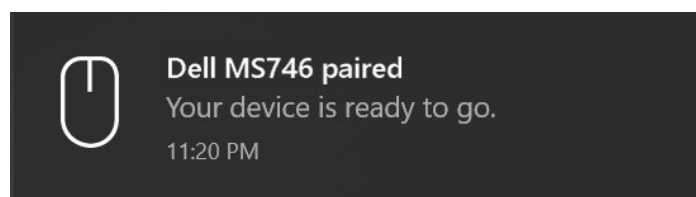


Figure 18. Dell MS746 mouse is paired

Switching between paired devices

Your wireless mouse remembers the last connection mode. When you turn on the mouse, the last connection-mode light along with the low battery-status light on the mouse turns on for three seconds.

If you want to switch to another paired device, toggle the connection-mode button on the mouse until the respective connection-mode light turns on.

For example, if you want to connect the wireless mouse to the second Bluetooth device (3*), then press the connection-mode button until the connection-mode light (3*) is selected on the mouse.

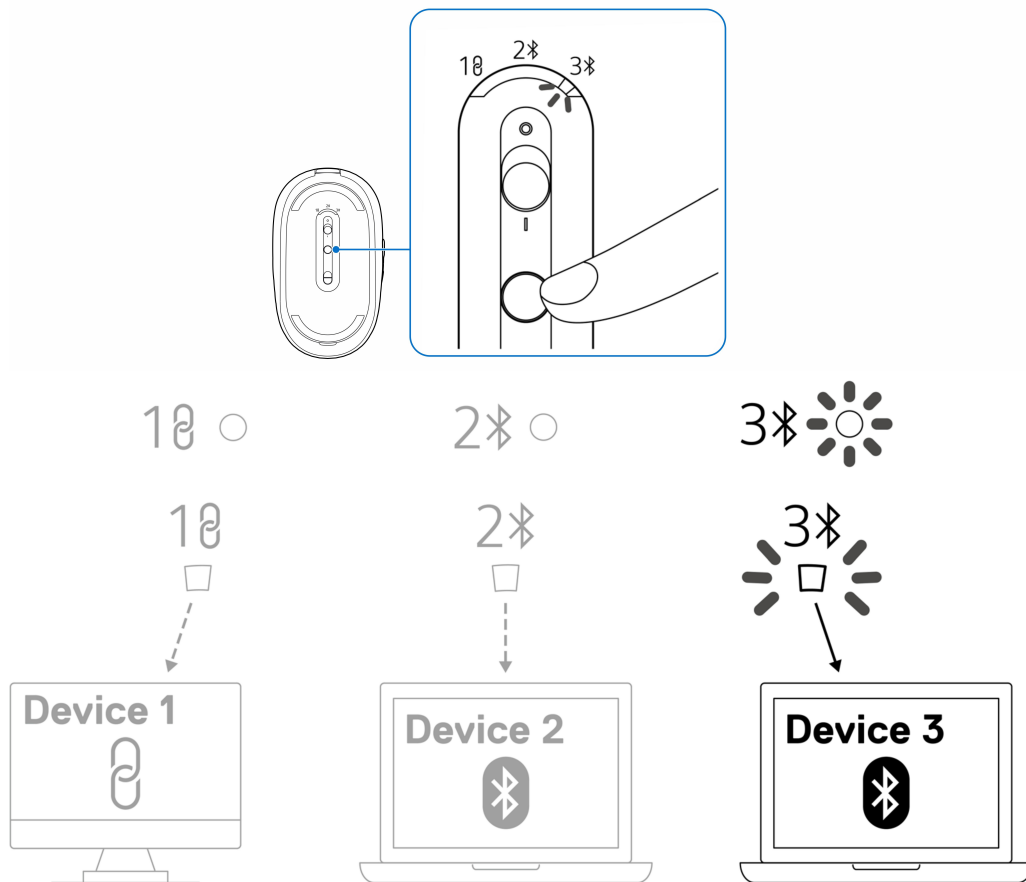


Figure 19. Switching between paired devices

Smart Connect

- Smart Connect enables the mouse to automatically switch between the USB receiver (RF) and paired Bluetooth devices so that you stay connected without manually changing the connection mode.
 - After you have paired the mouse on multiple channels (2.4 GHz RF and up to two Bluetooth devices), the devices continuously monitor the connection status on each channel.
 - When the active connection is lost (for example, the connected computer is turned off, put to sleep, goes out of range, or the USB receiver is removed), the device automatically searches the remaining paired channels in the following order and connects to the first available device:
 - Dell Secure Link USB receiver (RF)
 - Bluetooth device 1 (BT1)
 - Bluetooth device 2 (BT2)
 - When the device is connected over Bluetooth, it periodically checks if the USB receiver becomes available again. If the RF connection is detected, the device automatically switches back to RF to provide the most stable and responsive connection.
 - When you manually switch the connection mode to a specific Bluetooth channel using the connection-mode button on the mouse, the device stays on that channel and Smart Connect is temporarily disabled. To re-enable Smart Connect, turn off the mouse, and then turn on again.
- NOTE:** Smart Connect only works between channels that are already setup and successfully paired. Unpaired channels are skipped during the automatic search.

Mouse specifications

General

Table 4. General specifications

Description	Value
Model number	MS746
Connection type	Wireless (2.4 GHz RF with Dell Secure Link Receiver) Bluetooth (2 x BLE 6)
System requirement	<ul style="list-style-type: none">• Windows 10, 11 (64-bit) – full device functionality, including Dell Display and Peripheral Manager, Over-The-Air (OTA) firmware update, and Swift Pair.• Android• ChromeOS• macOS• iOS• iPadOS• Linux• Free-DOS – device functionality only, no additional software, and no Swift Pair.

Electrical

Table 5. Electrical specifications

Description	Value
Operating voltage	5V
Battery type (Supercapacitor)	Supercapacitor 250F to meet the run time specs
Run time	1.5 months on a full charge. Up to three minutes to charge full. One day run time for a five to ten seconds charging from dead battery capacity.

Physical characteristics

Table 6. Physical characteristics

Description	Value
Weight	77.00 g (0.17 lb)
Dimensions:	
Length	107.14 mm (4.22 in.)
Width	62.75 mm (2.47 in.)
Height	38.00 mm (1.53 in.)

Environmental

Table 7. Environmental specifications

Description	Value
Temperature:	
Operating	-10°C to 50°C (14°F to 122°F)
Storage	-40°C to 65°C (-40°F to 149°F)
Storage humidity	20% to 90% relative humidity, non-condensing

Wireless

Table 8. Wireless specifications

Description	
RF resolution	2.4 GHz RF
Transmission range	> 10 m (outdoor without any interference)

Troubleshooting

Table 9. Troubleshooting

Problems	Possible solutions
Unable to find dongle for the wireless mouse	<ol style="list-style-type: none"> 1. Locate the USB receiver inside your mouse. The USB receiver is shipped and placed inside the wireless mouse USB storage location. 2. If you have accidentally unpaired the wireless mouse, use the Dell Display and Peripheral Manager to pair the wireless mouse again.
Mouse is not functioning	<ol style="list-style-type: none"> 1. Check the battery level. If the battery is exhausted, charge the battery with the USB cable that is provided with the mouse. 2. Turn off the device, and then turn it on again. Check if the battery status light is flashing white, indicating the battery power is low. Recharge the battery. If the battery is fully depleted, the low battery-status light does not turn on.
Unable to pair the mouse with your computer	<ol style="list-style-type: none"> 3. Restart your computer. Ensure that the USB receiver is directly connected to your computer and test mouse using RF wireless connection.
Mouse pointer does not move	<ol style="list-style-type: none"> 4. Check for interference that may affect the USB receiver connectivity, such as nearby Wi-Fi and USB 3.0 devices.
Wireless connection is lost	<ul style="list-style-type: none"> • Check for any wireless devices that are in near such as wireless networking devices (Bluetooth printer and USB 3.0 device), wireless pointing devices, and microwave ovens. • Move away from these devices. Change the USB port. Connect the USB receiver to another USB port on your computer without other USB device connected next to your USB port.
Mouse left or right button does not work	<ol style="list-style-type: none"> 5. Ensure that the distance between the computer and your wireless mouse is within 1m distance, and avoid placing metal objects, thick items between the USB receiver and the devices to maintain a stable signal. 6. If necessary, connect the USB receiver to the USB receiver extender and check the wireless connection again. 7. If you have accidentally unpaired the mouse, use the Dell Display and Peripheral Manager to pair the wireless mouse again. 8. For pairing the mouse with Bluetooth, refer to Pairing your wireless mouse using Bluetooth.
Connection-mode button is unresponsive	<ol style="list-style-type: none"> 1. Press the connection-mode button multiple times until the LED indicator responds. 2. Turn off the device, and then turn it on. 3. Check the battery level. If the battery is exhausted, charge the battery with the USB cable that is provided with the mouse. 4. Turn off the device, and then turn it on again. Check if the battery-status light is flashing white, indicating that the battery power is low. Recharge the battery. If the battery is fully depleted, the low battery-status light does not turn on. 5. After the device wakes from idle mode, the button may require multiple presses. This is a normal behavior. 6. Ensure the device firmware is up to date using Dell Display and Peripheral Manager.

Problems	Possible solutions
Swift Pair does not work	<ol style="list-style-type: none"> 1. Ensure that Bluetooth is turned on. 2. In Windows Search, type Bluetooth. Click Bluetooth and other devices settings. 3. Ensure that the Show notifications to connect using Swift Pair check box is selected. 4. Press the connection-mode button for three seconds to initiate Bluetooth pairing mode. Ensure that the Bluetooth channel LED blinks white. 5. If Swift Pair notification does not appear, pair the device manually through Bluetooth settings. 6. Update Windows to the latest version.
Charging LED does not blink or behave as expected	<ol style="list-style-type: none"> 1. Ensure that the charging cable is properly connected to both the device and the USB port. 2. Try a different USB port on your computer. 3. Check if the USB port provides sufficient power for charging. 4. Observe the LED behavior. Blinking white indicates charging, solid white indicates fully charged. 5. If the LED stops blinking while charging, check if the battery is already fully charged. 6. If the issue persists, try a different USB-C cable.
Mouse cursor disappears or disconnects after being idle	<ol style="list-style-type: none"> 1. Check the battery level. If the battery is exhausted, charge the battery with the USB cable that is provided with the mouse. 2. Turn off the device, and then turn it on again. Check if the battery-status light is flashing white, indicating that the battery power is low. Recharge the battery. If the battery is fully depleted, the low battery-status light does not turn on. 3. On your computer, turn the Bluetooth off and on. 4. Restart your computer. 5. Ensure that the distance between your computer and mouse is within 10 meters. 6. Remove the mouse from Bluetooth settings and re-pair it. 7. If using the USB receiver, follow the Wireless connection is loss troubleshooting steps. 8. Check if you have installed the latest Bluetooth driver on your computer. For more information, see Drivers & Downloads at Dell Support Site.

Problems	Possible solutions
<p>Mouse pointer is moving slowly</p>	<ol style="list-style-type: none"> 1. Ensure that the sensor is not obstructed or dirty. Glass or smooth glossy surfaces are not suitable for the mouse sensor to capture the mouse movement. Using a dark-colored fabric mouse pad can improve the tracking. 2. Change the mouse settings to adjust the pointer speed. 3. Click the tab that matches the Operating System (OS) installed on your laptop or desktop and perform the steps within that section to change the settings. 4. In the Windows Search box, type main.cpl. Click main.cpl in the list of programs. The Mouse Properties dialog box appears. 5. Click the Pointer Options tab. In the Motion section, move the slider to adjust the pointer speed to the desired level. 6. Click OK. 7. The mouse has default 1600 DPI setting when shipped. Dell Display and Peripheral Manager can be used to adjust the DPI setting. Ensure that the DPI setting is at 1600 or above for smoother mouse movement using high-resolution display.
<p>Mouse movement and button clicks are lagging and erratic.</p>	<ol style="list-style-type: none"> 1. Check for interference that may affect wireless connectivity, such as nearby Wi-Fi and USB 3.0 devices. <ul style="list-style-type: none"> • Check for any wireless devices that are in near such as wireless networking devices (Bluetooth printer and USB 3.0 device), wireless pointing devices, and microwave ovens. • Move away from these devices. 2. Ensure that the distance between your laptop, desktop, or a compatible mobile device is within one meter. 3. If you are using the USB receiver to connect your mouse, ensure that the USB-A port where the USB receiver is connected is not close to the USB-A ports where other devices are connected. 4. Mouse connection speed is at 125 Hz (USB receiver wireless connection) or 133 Hz (Bluetooth). If you have to adjust to higher connection speeds, change back to default, and test again. 5. If necessary, connect the USB receiver to the USB receiver extender and check the wireless connection again. 6. Update the device firmware using the Dell Display and Peripheral Manager when required. 7. The mouse has default 1600 DPI setting when shipped, Dell Display and Peripheral Manager can be used to adjust the DPI setting. Ensure that the DPI setting is at 1600 or above for smoother mouse movement using high-resolution display.
<p>Dell Display and Peripheral Manager software features are not working as intended.</p>	<p>Dell Display and Peripheral Manager features are dependent on the operating system and processor that is installed in your computer. For more information, see the documentation for Dell Display and Peripheral Manager at Dell Support Site.</p>

Statutory information

Warranty

Limited warranty and return policies

Dell Pro 7 Rechargeable Compact Mouse (MS746) carries a three-year limited hardware warranty.

For U.S. customers:

This purchase and your use of this product are subject to Dell's end user agreement, which you can find at [Terms of Sale](#). This document contains a binding arbitration clause.

For European, Middle Eastern and African customers:

Dell Pro 7 Rechargeable Compact Mouse (MS746) that is sold and used is subject to applicable national consumer legal rights, the terms of any retailer sale agreement that you have entered into (which applies between you and the retailer) and Dell's end user contract terms.

Dell may also provide an additional hardware warranty – full details of the Dell end user contract and warranty terms can be found by going to [Terms of Sale](#), selecting your country from the list at the bottom of the “home” page and then clicking the “terms and conditions” link for the end user terms or the “support” link for the warranty terms.

For non-U.S. customers:

Dell Pro 7 Rechargeable Compact Mouse (MS746) that is sold and used is subject to applicable national consumer legal rights, the terms of any retailer sale agreement that you have entered into (which applies between you and the retailer) and Dell's warranty terms. Dell may also provide an additional hardware warranty – full details of Dell's warranty terms can be found by going to [Dell Site](#), selecting your country from the list at the bottom of the “home” page and then clicking the “terms and conditions” link or the “support” link for the warranty terms.

Revision history

The following table provides the revision history of this document:

Table 10. Revision History

Revision	Date	Description
A00	April 2026	Original publish date.