



The product images are for illustration purposes only. Actual product appearance, ports, keyboard layout, and accessories may vary by model.

- AMD Ryzen 5 5625U (6C / 12T, 2.3 / 4.3GHz, 3MB L2 / 16MB L3)
- 16GB Soldered DDR4-3200
- 512GB SSD M.2 2242 PCIe 4.0x4 NVMe
- Integrated AMD Radeon Graphics
- Windows 11 Home, English
- Case color - Arctic Grey
- 1-year, Courier or Carry-in

**Premium Care - Advanced Support from Real People. Real Fast.**



**REAL PERSON**

Choose how you want to reach us - through the phone, chat or email - our expert technicians will take care of you.



**REAL FAST**

Highly trained technicians will provide you real-time solutions, whatever the issue, on your first contact. If needed, our team will schedule an onsite visit for the next business day.



**HASSLE FREE**

'Getting started' and 'how-to' assistance for hardware and software. Easy solutions that are simple to reach - that's how Premium Care delivers you the ideal support experience.



**PC HEALTH CHECK**

Free annual PC Health Check that allows our experts to spot issues before you do so they can resolve them quickly and help you avoid PC problems.

**Accidental Damage Protection - Protection of your PC from the unexpected.**

Experience shows that a significant portion of devices may be damaged (and not covered under warranty) in the first three years. Lenovo's Accidental Damage Protection service covers accidents beyond the system warranty such as drops, spills, bumps and even electrical surges. Make sure your new device has maximum protection, avoid unplanned costs and get peace of mind.

**Base Warranty** - Included with the systems you purchase, default 1- or 3-year coverage window.

**Warranty Extensions & Upgrades** - Service and protection that's right for your circumstances.

- Pick Up & Return Courier
- Onsite Support
- Technician Installed Customer
- Replaceable Unit Service
- International Warranty Upgrade

**Recommended Accessories** United Kingdom



Lenovo 16" Laptop Everyday Backpack B510

4X41U80414



Lenovo Analog In-Ear Headphones Gen II Bulk Package (20pcs)

4XD1T54899



Lenovo Legion M220 Wireless RGB Gaming Mouse (Eclipse Black)

GY51U28359



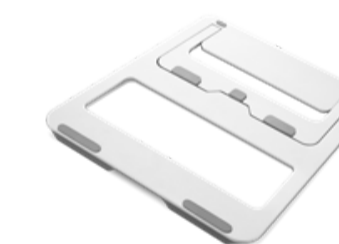
Lenovo Select FHD Webcam Gen2

GXC1S15023



Lenovo 65W AC Adapter (Round Tip)-UK/Hong Kong/Malta/Mynamar/Singa...

4X21K07726



Lenovo Portable Aluminum Laptop Stand

4XF1B03657

>> [View More Accessories](#)

**PERFORMANCE****Processor**

AMD Ryzen™ 5 5625U (6C / 12T, 2.3 / 4.3GHz, 3MB L2 / 16MB L3)

**Graphics**

Integrated AMD Radeon™ Graphics

**Chipset**

AMD SoC Platform

**Memory**

16GB Soldered DDR4-3200

**Memory Slots**

Memory soldered to systemboard, no slots, dual-channel (12GB or 16GB models)

**Max Memory**

16GB soldered memory, not upgradable

**Storage**512GB SSD M.2 2242 PCIe® 4.0x4 NVMe®<sup>[1]</sup>**Storage Slot**

One M.2 PCIe® 3.0 x4 slot

**Max Storage Support<sup>[2]</sup>**

One drive, up to 1TB M.2 2242 SSD

**Optical**

None

**Card Reader**

SD Card Reader

**Audio Chip**

High Definition (HD) Audio

**Speakers**

User-facing stereo speakers, 1.5W x2, optimized with Dolby Audio™

**Microphone**

2x, Array

**Camera**

FHD 1080p with Privacy Shutter

**Battery**

47Wh

**Power Adapter**

No Power Adapter

**DESIGN****Display**

15.6" FHD (1920x1080) TN 250nits Anti-glare

**Touchscreen**

None

**Screen-to-Body Ratio**

88% AAR (active area ratio)

**Pen**

Pen Not Supported

**Keyboard**

Non-backlit, English (UK)

**Touchpad**

Buttonless Mylar® surface multi-touch touchpad, supports Precision TouchPad (PTP), 69 x 104 mm (2.72 x 4.09 inches)

**Dimensions (WxDxH)<sup>[3]</sup>**

359.3 x 235 x 17.9 mm (14.15 x 9.25 x 0.70 inches)

**Weight<sup>[4]</sup>**

Starting at 1.62 kg (3.57 lbs)

**Case Color**

Arctic Grey

**Case Material**

PC-ABS (Top), PC-ABS (Bottom)

**Surface Treatment**

IMR (In-Mold Decoration by Roller)

**SOFTWARE****Operating System**

Windows® 11 Home, English

**Bundled Software**

Office Trial

**CONNECTIVITY****WLAN + Bluetooth**

Wi-Fi® 6, 802.11ax 2x2 + BT5.2

**WWAN**

WWAN Not Supported

**Ethernet**

No Onboard Ethernet

**Standard Ports**

- 2x USB 3.2 Gen 1
- 1x USB-C® 3.2 Gen 1 (support data transfer, USB PD 45-65W and DisplayPort™ 1.2)
- 1x HDMI® 1.4
- 1x Headphone / microphone combo jack (3.5mm)
- 1x Card reader
- 1x Round tip power connector

**SECURITY & PRIVACY****Security Chip**

Firmware TPM 2.0 Enabled

**Fingerprint Reader**

No Fingerprint Reader

**Other Security**

Camera privacy shutter

**SERVICE****Base Warranty**

1-year, Courier or Carry-in

**Included Upgrade**

None

**ACCESSORIES****Bundled Accessories**

None

**CERTIFICATIONS****Green Certifications**

- ENERGY STAR® 9.0
- EPEAT™ Silver Registered<sup>[5]</sup>
- ErP Lot 6/26
- RoHS compliant

**Mil-Spec Test**

MIL-STD-810H military test passed (21 test items)

**Other Certifications**

TÜV Rheinland® Low Blue Light (Software Solution)

**MODEL**

TopSeller : No

EAN / UPC / JAN: 199276230621

Announce Date: 2026-03-18

End of Support : 2029-02-28



AMD

Product image is a sample, it may not match the real color of this model

**Note:**

[1] The SSD with PCIe 4.0x4 is downgraded to closer to PCIe 3.0x4 due to AMD platform limitations.

[2] The storage capacity supported is based on the test results with current Lenovo storage offerings.

[3] The system dimensions may vary depending on configurations.

[4] The system weight is approximate and based on results in Lenovo lab, which varies depending on the source of component, variance of the distribution of each component, and manufacturing process. It may not be the exact weight for each specific model.

[5] EPEAT is registered where applicable, please visit [epeat.net](https://www.epeat.net) for registration status by country.

- Please refer to the official [Lenovo store website](#) or contact a local Lenovo sales representative or authorized business partner for current inventory and purchase options.
- Lenovo reserves the right to change specifications without notice.