



The product images are for illustration purposes only. Actual product appearance, ports, keyboard layout, and accessories may vary by model.

- AMD Ryzen 7 250 (8C / 16T, 3.3 / 5.1GHz, 8MB L2 / 16MB L3)
- 1x 16GB SODIMM DDR5-5600
- 512GB SSD M.2 2242 PCIe 4.0x4 NVMe
- NVIDIA GeForce RTX 5050 8GB GDDR7, Boost Clock 2662MHz, TGP 115W, 440 AI TOPS
- Windows 11 Home, English
- Case color - Surge Green
- 1-year, Courier or Carry-in

**Premium Care - Advanced Support from Real People. Real Fast.**



**REAL PERSON**

Choose how you want to reach us - through the phone, chat or email - our expert technicians will take care of you.



**REAL FAST**

Highly trained technicians will provide you real-time solutions, whatever the issue, on your first contact. If needed, our team will schedule an onsite visit for the next business day.



**HASSLE FREE**

'Getting started' and 'how-to' assistance for hardware and software. Easy solutions that are simple to reach - that's how Premium Care delivers you the ideal support experience.



**PC HEALTH CHECK**

Free annual PC Health Check that allows our experts to spot issues before you do so they can resolve them quickly and help you avoid PC problems.

**Accidental Damage Protection - Protection of your PC from the unexpected.**

Experience shows that a significant portion of devices may be damaged (and not covered under warranty) in the first three years. Lenovo's Accidental Damage Protection service covers accidents beyond the system warranty such as drops, spills, bumps and even electrical surges. Make sure your new device has maximum protection, avoid unplanned costs and get peace of mind.

**Base Warranty - Included with the systems you purchase, default 1- or 3-year coverage window.**

**Warranty Extensions & Upgrades - Service and protection that's right for your circumstances.**

- Pick Up & Return Courier
- Onsite Support
- Technician Installed Customer
- Replaceable Unit Service
- International Warranty Upgrade

**Recommended Accessories** **United Kingdom**



**Lenovo Wireless Speakerphone 6000**

4Y71Q47766



**ThinkPad Bluetooth Presenter Mouse (Aura Edition)**

4Y51T62792



**Lenovo USB 20Gbps USB-C to USB-C Cable 1.5m**

4X91U92143



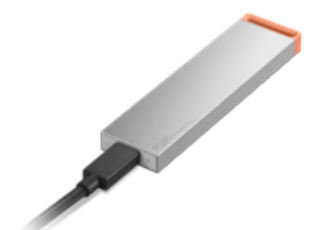
**Lenovo 16" Laptop Everyday Backpack B510**

4X41U80414



**Lenovo 245W AC Adapter (Slim tip)-UK**

GX21T87706



**Lenovo PS8S Portable SSD 4TB**

4XB1T91892

>> [View More Accessories](#)

**PERFORMANCE****Processor**

AMD Ryzen™ 7 250 (8C / 16T, 3.3 / 5.1GHz, 8MB L2 / 16MB L3)

**AI PC Category**

AI-Powered Gaming PC

**NPU**

Integrated AMD Ryzen™ AI, up to 16 TOPS

**Graphics**

NVIDIA GeForce RTX™ 5050 8GB GDDR7, Boost Clock 2662MHz, TGP 115W, 440 AI TOPS

**Chipset**

AMD SoC Platform

**Memory**

1x 16GB SODIMM DDR5-5600

**Memory Slots**

Two DDR5 SODIMM slots, dual-channel capable

**Max Memory<sup>[1]</sup>**

Up to 32GB DDR5-5600 offering

**Storage**

512GB SSD M.2 2242 PCIe® 4.0x4 NVMe®

**Storage Slot**

Two M.2 slots • One M.2 2280 PCIe® 4.0 x4 slot • One M.2 2280 PCIe® 4.0 x2 slot

**Max Storage Support<sup>[2][3]</sup>**

Up to two drives, 2x M.2 SSD • M.2 2242 SSD up to 2TB each

**Optical**

None

**Card Reader**

No Card Reader

**Audio Chip**

High Definition (HD) Audio, Realtek® ALC3287 codec

**Speakers**

Stereo speakers, 2W x2, optimized with Nahimic Audio

**Microphone**

2x, Array

**Camera**

5.0MP with E-shutter

**Battery**

60Wh

**Power Adapter**

245W Slim Tip (3-pin)

**Special Features**

AI Chip: LA1

**DESIGN****Display**15.3" WUXGA (1920x1200) IPS 300nits Anti-glare, 100% sRGB, 165Hz, FreeSync™, G-SYNC®, Low Blue Light<sup>[4]</sup>**Touchscreen**

None

**Screen-to-Body Ratio**

92% AAR (active area ratio)

**Color Calibration**

Factory Color Calibration

**Pen**

Pen Not Supported

**Keyboard**

1-Zone RGB Backlit, English (UK)

**Touchpad**

Buttonless Mylar® surface multi-touch touchpad, supports Precision TouchPad (PTP), 75 x 120 mm (2.95 x 4.72 inches)

**Dimensions (WxDxH)<sup>[5]</sup>**

344.9 x 254.83 x 20.9-23.25 mm (13.58 x 10.03 x 0.82-0.92 inches)

**Weight<sup>[6]</sup>**

Starting at 2.1 kg (4.6 lbs)

**Case Color**

Surge Green

**Case Material**

PC-ABS (Top), PC-ABS (Bottom)

**Surface Treatment**

Painting

**SOFTWARE****Operating System**

Windows® 11 Home, English

**Bundled Software**

Office Trial + Lenovo® AI Now

**CONNECTIVITY****WLAN + Bluetooth**

Wi-Fi® 6, 802.11ax 2x2 + BT5.3

**WWAN**

WWAN Not Supported

**Ethernet**

100/1000M (RJ-45)

**Standard Ports**

- 2x USB-A (USB 5Gbps)
- 1x USB-A (USB 10Gbps)
- 1x USB-C® (USB4® 40Gbps), with USB PD 65-100W and DisplayPort™ 1.4<sup>[7]</sup>
- 1x HDMI® 2.1, up to 8K/60Hz
- 1x Headphone / microphone combo jack (3.5mm)
- 1x Ethernet (RJ-45)
- 1x Slim tip Power connector

**Docking**Various docking solutions supported via USB-C®. For more compatible docking solutions, please visit [Docking for LOQ™ 15AHP11](#)**SECURITY & PRIVACY****Security Chip**

Firmware TPM 2.0 Enabled

**Fingerprint Reader**

No Fingerprint Reader

**Other Security**

E-shutter

**SERVICE****Base Warranty**

1-year, Courier or Carry-in

**Included Upgrade**

None

**ACCESSORIES****Bundled Accessories**

Lenovo Legion™ M220 Wireless RGB Gaming Mouse

**CERTIFICATIONS****Green Certifications**

- ENERGY STAR® 9.0
- EPEAT™ Silver Registered
- ErP Lot 6/26
- RoHS compliant

**Other Certifications**

TÜV Rheinland® Low Blue Light (Hardware Solution)

**MODEL****TopSeller** : No**EAN / UPC / JAN:** 199276041654**Announce Date:** 2026-04-29**End of Support** : 2032-01-15**Note:**<sup>[1]</sup> The max memory is based on the test results with current Lenovo memory offerings.<sup>[2]</sup> The storage capacity supported is based on the test results with current Lenovo storage offerings.<sup>[3]</sup> The system supports dual SSD via two M.2 slots, but Lenovo offers only one SSD configuration with a second slot for user self-expansion.<sup>[4]</sup> IPS (in-plane switching) technology may refer to IPS, PLS, ADS, AHVA, AAS.<sup>[5]</sup> The system dimensions may vary depending on configurations.<sup>[6]</sup> The system weight is approximate and based on results in Lenovo lab, which varies depending on the source of component, variance of the distribution of each component, and manufacturing process. It may not be the exact weight for each specific model.<sup>[7]</sup> Supports Lenovo protocol for 140W charging but requires a unique Lenovo adapter for operation.

- Please refer to the official [Lenovo store website](#) or contact a local Lenovo sales representative or authorized business partner for current inventory and purchase options.
- Lenovo reserves the right to change specifications without notice.