

## PERFORMANCE

### Processor

Intel Core™ Ultra 5 325, 8C (4P + 4LPE) / 8T, Max Turbo up to 4.5GHz, 12MB Intel® Smart Cache

### AI PC Category

Copilot+ PC

### NPU

Up to 47 TOPS

### Graphics

Integrated Intel® Graphics

### Chipset

Intel® SoC Platform

### Memory

16GB Soldered LPDDR5x-7467

### Memory Slots

Memory soldered to systemboard, no slots, dual-channel

### Max Memory

32GB soldered memory, not upgradable

### Storage

512GB SSD M.2 2280 PCIe® 4.0x4 NVMe®

### Max Storage Support<sup>[1]</sup>

One drive, up to 1TB M.2 SSD

### Card Reader

No Card Reader

### Optical

None

### Audio Chip

High Definition (HD) Audio, Realtek® ALC274 codec

### Speakers

3Wx2 tweeter + 5Wx2 woofer, JBL®

### Camera

5.0MP + IR

### Microphone

Dual Microphone

### Power Supply

135W 90% Adapter

## DESIGN

### Display<sup>[2]</sup>

27" QHD (2560x1440) IPS 350nits, 99% sRGB, Anti-glare, 4 side like, 120Hz

### Touchscreen

Non-touch

### Keyboard

Euterpe Wireless Keyboard, Luna Grey, English (UK)

### Mouse

Euterpe Wireless Mouse, Luna Grey

### Expansion Slots

Three M.2 slots (one for WLAN, two for SSD)

### Case Color

Luna Grey

### Stand

Tilt, Swivel, Pivot, Height Adjust Stand

### Wireless Charger

No Wireless Charger

### Pen

Pen Not Supported

### Form Factor

AIO (27 inches)

### Dimensions (WxDxH)<sup>[3]</sup>

- Lowest Position | 613 x 235 x 495 mm (24.13 x 9.25 x 19.48 inches)
- Highest Position | 613 x 235 x 565 mm (24.13 x 9.25 x 22.24 inches)

### Weight<sup>[4]</sup>

Around 7.53 kg (16.6 lbs)

## CONNECTIVITY

### WLAN + Bluetooth<sup>[5]</sup>

Wi-Fi® 7, 802.11be 2x2 + BT5.4<sup>[6]</sup>

### WWAN

WWAN Not Supported

### Rear Ports

- 1x USB-C® (USB 10Gbps / USB 3.2 Gen 2)
- 1x USB-A (Hi-Speed USB / USB 2.0)
- 1x USB-A (USB 10Gbps / USB 3.2 Gen 2)
- 1x HDMI® 2.1 TMDS
- 1x HDMI®-in
- 1x Ethernet (RJ-45)
- 1x Power connector

### Left Ports

- 1x Camera switch
- 1x On-Screen-Display (OSD) adjustment joystick
- 1x Power button

### Right Ports

- 1x Switch button
- 1x USB-A (USB 10Gbps / USB 3.2 Gen 2)
- 1x USB-C® (USB 10Gbps / USB 3.2 Gen 2)
- 1x headphone / microphone combo jack (3.5mm)

## SECURITY & PRIVACY

### Security Chip

Firmware TPM 2.0 integrated in SoC

## SERVICE

### Base Warranty

1-year, Courier or Carry-in

### Included Upgrade

None

## CERTIFICATIONS

### Green Certifications

- ErP Lot 3/7
- GREENGUARD®
- RoHS compliant

## SOFTWARE

### Operating System

Windows® 11 Home, English

### Bundled Software

None

## ACCESSORIES

### Bundled Accessories

None

## MODEL

TopSeller : No EAN / UPC / JAN: 199274041533

Announce Date: 2026-01-30 End of Support : 2032-02-29

Note:

[1] The max capacity of each disk type is based on the test results with current Lenovo storage offerings.

[2] IPS (in-plane switching) technology may refer to IPS, PLS, ADS, AHVA, AAS.

[3] The system dimensions may vary depending on configurations.

[4] The system weight is approximate and based on results in Lenovo lab, which varies depending on the source of component, variance of the distribution of each component, and manufacturing process. It may not be the exact weight for each specific model.

[5] Wi-Fi operation (including Wi-Fi 6, Wi-Fi 6E, Wi-Fi 7, etc.) is subject to the regulatory requirements of each country. Bluetooth may operate at a lower version than hardware design depending on the factors such as operating system, driver, etc.

[6] The bandwidth of WiFi 7 adapter is 160 MHz.

• Please refer to the official [Lenovo store website](#) or contact a local Lenovo sales representative or authorized business partner for current inventory and purchase options.

• Lenovo reserves the right to change specifications without notice.

## Premium Care - Advanced Support from Real People. Real Fast.



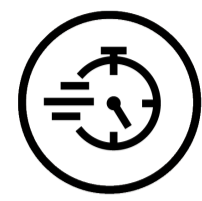
### REAL PERSON

Choose how you want to reach us - through the phone, chat or email - our expert technicians will take care of you.



### HASSLE FREE

'Getting started' and 'how-to' assistance for hardware and software. Easy solutions that are simple to reach - that's how Premium Care delivers you the ideal support experience.



### REAL FAST

Highly trained technicians will provide you real-time solutions, whatever the issue, on your first contact. If needed, our team will schedule an onsite visit for the next business day.



### PC HEALTH CHECK

Free annual PC Health Check that allows our experts to spot issues before you do so they can resolve them quickly and help you avoid PC problems.

## Accidental Damage Protection - Protection of your PC from the unexpected.

Experience shows that a significant portion of devices may be damaged (and not covered under warranty) in the first three years. Lenovo's Accidental Damage Protection service covers accidents beyond the system warranty such as drops, spills, bumps and even electrical surges. Make sure your new device has maximum protection, avoid unplanned costs and get peace of mind.

**Base Warranty** - Included with the systems you purchase, default 1- or 3-year coverage window.

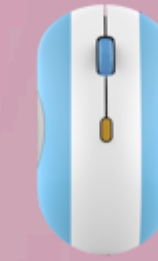
**Warranty Extensions & Upgrades** - Service and protection that's right for your circumstances.

- Pick Up & Return Courier
- Onsite Support
- Technician Installed Customer
- Replaceable Unit Service
- International Warranty Upgrade

Lenovo may not offer the products, services or features discussed in this document in all regions. Lenovo may withdraw an offering at any time. Consult your local representative for information on offerings available in your area. Lenovo reserves the right to change specifications or other product information without notice. Lenovo is not responsible for photographic or typographical errors. Lenovo provides this publication "as is" without warranty of any kind, either express or implied, including the implied warranties of merchantability or fitness for a particular purpose.

## Recommended Accessories

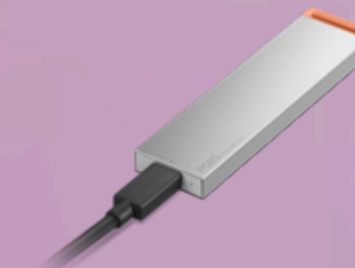
 United Kingdom



Lenovo 350 Bluetooth Silent Mouse (Fan Edition - Argentina) GY51U71763



Lenovo Analog In-Ear Headphones Gen II Bulk Package (20pcs) 4XD1T54899



Lenovo PS8S Portable SSD 4TB 4XB1T91892

Please click [here](#) to view the full list of accessories.

**Lenovo**

**PSREF**  
Product Specifications  
Reference