



AMD

The product images are for illustration purposes only. Actual product appearance, ports, keyboard layout, and accessories may vary by model.

- AMD Ryzen 7 8745HX (8C / 16T, 3.6 / 5.1GHz, 8MB L2 / 32MB L3)
- 1x 16GB SODIMM DDR5-5200
- 1x 1TB SSD M.2 2280 PCIe 4.0x4 NVMe
- NVIDIA GeForce RTX 5060 Ti 8GB GDDR7
- Windows 11 Home, English
- Case color - Luna Grey (Front Bezel), Eclipse Black (Chassis)
- 1-year, Courier or Carry-in

Premium Care - Advanced Support from Real People. Real Fast.



REAL PERSON

Choose how you want to reach us - through the phone, chat or email - our expert technicians will take care of you.



REAL FAST

Highly trained technicians will provide you real-time solutions, whatever the issue, on your first contact. If needed, our team will schedule an onsite visit for the next business day.



HASSLE FREE

'Getting started' and 'how-to' assistance for hardware and software. Easy solutions that are simple to reach - that's how Premium Care delivers you the ideal support experience.



PC HEALTH CHECK

Free annual PC Health Check that allows our experts to spot issues before you do so they can resolve them quickly and help you avoid PC problems.

Accidental Damage Protection - Protection of your PC from the unexpected.

Experience shows that a significant portion of devices may be damaged (and not covered under warranty) in the first three years. Lenovo's Accidental Damage Protection service covers accidents beyond the system warranty such as drops, spills, bumps and even electrical surges. Make sure your new device has maximum protection, avoid unplanned costs and get peace of mind.

Base Warranty - Included with the systems you purchase, default 1- or 3-year coverage window.

Warranty Extensions & Upgrades - Service and protection that's right for your circumstances.

- Pick Up & Return Courier
- Onsite Support
- Technician Installed Customer
- Replaceable Unit Service
- International Warranty Upgrade

Recommended Accessories United Kingdom



Lenovo USB 20Gbps USB-C to USB-C Cable 1.5m

4X91U92143



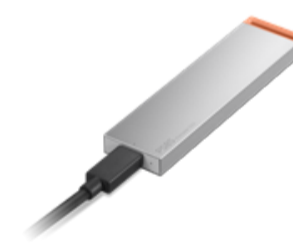
Lenovo 350 Bluetooth Silent Mouse (Fan Edition - Argentina)

GY51U71763



Lenovo Analog In-Ear Headphones Gen II Bulk Package (20pcs)

4XD1T54899



Lenovo PS8S Portable SSD 4TB

4XB1T91892



Lenovo 310 FHD Webcam Black

GXC1S15024

>> [View More Accessories](#)

PERFORMANCE**Processor**

AMD Ryzen™ 7 8745HX (8C / 16T, 3.6 / 5.1GHz, 8MB L2 / 32MB L3)

AI PC Category

Non-AI PC

Graphics^[1]

NVIDIA GeForce RTX™ 5060 Ti 8GB GDDR7

Chipset

AMD SoC Platform

Memory

1x 16GB SODIMM DDR5-5200

Memory Slots

Two DDR5 SODIMM slots, dual-channel capable

Max Memory^{[2][3]}

Up to 64GB DDR5-5200

Storage

1x 1TB SSD M.2 2280 PCIe® 4.0x4 NVMe®

Max Storage Support^[4]

Up to four drives, 2x M.2 SSD + 2x 3.5" HDD • 3.5" HDD bay is only for customer self upgrade • M.2 SSD up to 2TB each

Card Reader

No Card Reader

Optical

None

Audio Chip

High Definition (HD) Audio, Realtek® ALC623-CG codec

Speakers

No speakers

Power Supply

850W 90%

DESIGN**Keyboard**

None

Mouse

None

Expansion Slots

- One PCIe® 4.0 x16, full height
- One PCIe® 3.0 x1, full-height
- Three M.2 slots (one for WLAN, two for SSD)

Case Color

Luna Grey (Front Bezel), Eclipse Black (Chassis)

Chassis

Transparent Cover

System Fan

2x 120MM front system fan with ARGB light + 120MM rear system fan with ARGB light

Carry Handle

Carry Handle

Pen

Pen Not Supported

Form Factor

Tower (26L)

Dimensions (WxDxH)^[5]

205 x 404.5 x 437.1 mm (8.07 x 15.92 x 17.2 inches)

Weight^[6]

Around 10.5 kg (23.14 lbs)

CONNECTIVITY**WLAN + Bluetooth**

Wi-Fi® 7, 802.11be 2x2 + BT5.4

WWAN

WWAN Not Supported

Ethernet

Integrated 100/1000M

Top Ports

- 1x USB-C® (USB 10Gbps / USB 3.2 Gen 2)
- 2x USB-A (USB 5Gbps / USB 3.2 Gen 1)
- 1x headphone / microphone combo jack (3.5mm)

Rear Ports^[7]

- 4x USB-A (Hi-Speed USB / USB 2.0)
- 1x HDMI® 2.1 TMDS
- 1x Ethernet (RJ-45)
- 1x headphone (3.5mm)
- 1x power connector

SECURITY & PRIVACY**Security Chip**

Firmware TPM 2.0 integrated in SoC

SERVICE**Base Warranty**

1-year, Courier or Carry-in

Included Upgrade

None

CERTIFICATIONS**Green Certifications**

- ErP Lot 3
- RoHS compliant

SOFTWARE**Operating System**

Windows® 11 Home, English

Bundled Software

Lenovo® AI Now

MODEL

TopSeller : No

Announce Date: 2026-03-23

EAN / UPC / JAN: 199275257667

End of Support : 2031-08-31



AMD

Product image is a sample, it may not match the real color of this model

Note:

[1] The information of integrated graphics are not applicable for the models with processor which has no integrated graphics inside (for the details, please refer to processor section).

[2] Installed memory is actually DDR5-5600 but may run as DDR5-5200 depending on the memory support capability of AMD.

[3] The max memory is based on the test results with current Lenovo memory offerings.

[4] The max capacity of each disk type is based on the test results with current Lenovo storage offerings.

[5] The system dimensions may vary depending on configurations.

[6] The system weight is approximate and based on results in Lenovo lab, which varies depending on the source of component, variance of the distribution of each component, and manufacturing process. It may not be the exact weight for each specific model.

[7] For video ports on discrete graphics, please see [graphics section](#)

- Please refer to the official [Lenovo store website](#) or contact a local Lenovo sales representative or authorized business partner for current inventory and purchase options.
- Lenovo reserves the right to change specifications without notice.